

## GREAT BRITAIN SILVER & BRONZE



2488\*

**Anglo-Saxon**, Kings of Northumbria, Osberht, (849/50-67), copper styca, (1.14g, 14mm), Phase II, Group Dii, Reflectives series III, irregular issue imitating York mint, Monne, moneyer, obv. star with inverted and retrograded legend +OSbErHT rEX around, dotted border, rev. cross, +MONNE around, dotted border (S.869/872). *Very fine*.

\$100

c.f. CNG eAuction 511, lot 628 (\$1,000 USD hammer), same dies. The legends feature individually retrograded letters, inversions, and reversions, the star motif on the obverse is unusual for the type.

2489

**Henry II**, (1154-1189) cut halfpennies (5), voided long cross (3), voided short cross (2), (0.60g; 0.72g; 0.73g; 0.63g; 0.62g), includes Henry II, John, Henry III. *The third a little bent, fair - nearly very fine*. (5)

\$150



2490\*

**Richard I**, (1189-1199), silver penny, short cross type, class 2, (1.23g), in the name of Henry II, obv. crowned facing, rev. voided short cross, 4 pellets in angles (S.1346). *Reverse struck slightly off centre, cabinet toned with colourful highlights, fine*.

\$200

With Certificate of Authenticity from Downie's Collectables.



2491\*

**Edward I**, (1272-1307), silver penny, long cross type, class 4a, Canterbury mint, (1.31g), obv. crowned facing bust within pelleted circle, comma-shaped contraction mark, late S, open C and E, rev. long cross dividing legend, trefoil of pellets in each angle (S.1419). *A full flan, well struck, nearly very fine*.

\$100



2492\*

**Edward II**, (1307-27), silver penny, long cross type, class 13, London mint, (1.30g), obv. crowned facing bust with pelleted inner circle, central fleur of crown as Greek double axe, rev. long cross dividing legend, trefoil of pellets in each angle within pelleted inner circle; another similar, Canterbury mint, (1.43g) (S.1459; 1466). *Clipped, toned, fine; toned, a full flan, good fine*. (2)

\$100



2493\*

**Edward III**, (1327-77), silver penny, third coinage, class 2, London mint, (1.16g), obv. crowned bust of Edward III facing, rev. long cross pattée, trefoil in each segment (S.1544); silver halfpenny, third coinage, London mint, (0.64g), obv. crowned bust of Edward III facing, rev. long cross pattée, trefoil in each segment (S.1558). *A little clipped between 6 and 9, otherwise fine; slightly bent, fine*. (2)

\$150



Part

2494\*

**Edward III**, (1327-1377), silver long cross penny; **Henry VIII**, (1509-1547), third coinage, silver groat (cf S.2369-74); **Anne**, (1702-1714), silver shilling 1711 (S.3610). *The first chipped with a flan crack, fair, the others fine*. (3)

\$200



2495\*

**Richard II**, (1377-1399), silver penny, long cross, York local style, (0.90g), obv. crowned portrait of Richard II facing, pellet above each shoulder and lis on breast, rev. long cross with quatrefoil in centre, three pellets in each segment (S.1692). *Clipped, very good*.

\$100

2496

**Henry VIII - George III**, balance of collection in album, select coins in 2x2 holders, all attributed with S (for hammered) and ESC (for milled) silver, shillings, hammered (12), milled (30); sixpences, hammered (14), milled (15); groats, hammered (1), milled (10); threepences, hammered (6), milled (20); twopences, hammered (5), milled (6); pennies, milled (1). *Fair - extremely fine.* (120)

\$2,500



2497\*

**Charles II**, third bust, silver crown, 1677 (S.3358). *Date figures weak otherwise toned good fine/ nearly very fine.*

\$350



2498\*

**Charles II**, silver shilling, first bust, 1663 (S.3371; ESC 1022). *Attractively toned, nearly extremely fine.*

\$800



2499\*

**Charles II, James II, and George II**, Maundy fourpences, 1681 (S.3384); 1687/6 (S.3414); 1735 (S.3712A). *Good very fine.* (3)

\$150



Part

2500\*

**Charles II - George III**, Maundy twopences, 1679, 1686, 1691, 1698, 1707, 1732, 1784; pennies 1688, 1709, 1723, 1746, 1779. *Good very fine - nearly uncirculated.* (12)

\$400



2501\*

**James II**, silver halfcrown, first bust 1685 (S.3408). *Weak fourth quarter on the reverse otherwise good fine.*

\$200





2502\*  
James II, silver shilling, 1688/7 (S.3410; ESC 1074). *Toned, good fine.*

\$350



2503\*  
William and Mary, silver halfcrown, first busts, 1689, caul frosted, no pearls (S.3435). *Toned, good fine.*

\$150



2504\*  
William and Mary, silver shilling, 1692, RE/ET (ESC 1075B; S.3437). *Toned fine/ good fine.*

\$400



2505\*  
William and Mary, silver shilling, first bust, 1693, 9/E, (ESC 1076; S.3437). *Toned, very good/ nearly fine.*

\$200



2506\*  
William and Mary, William III, George I, George II, George III, Maundy threepences, 1689 (S.3441); 1701 (S.3550); 1717 (S.3655); 1740 (S.3713D); 1763 (S.3753). *Very fine - nearly uncirculated.* (5)

\$300



2507\*  
William III, silver halfcrown, first bust, 1698 (S.3494). *Grey toned, nearly very fine.*

\$200



2508\*  
William III, silver shilling, first bust, 1696B (Bristol) (ESC 1081; S.3498). *Good fine.*

\$240



2509\*  
William III, silver shilling, fifth bust, 1700 (S.3516). *Good very fine.*

\$120



2510\*

**William III**, silver sixpences, first bust, 1696 (S.3520); 1696B (Bristol) (S.3521). *Toned, nearly very fine; good fine.* (2)  
\$150

2511

**William III - Elizabeth II**, farthings (37); halfpennies (68); pennies (66); silver threepences (15); brass threepences (23), sixpences (42), shillings (11), including 1697, florins (26), including Jubilee head 1890, 1872 Gothic florin, 1889 double florin; halfcrowns (27), including 1836, crowns (6), including 1821, 1889, in two coin albums. *Poor - nearly extremely fine.* (321)  
\$400



2512\*

**Anne**, before the union, first bust, silver shilling, 1702 (Vigo) (S.3585). *Toned, nearly fine.*  
\$150



2513\*

**Anne**, before the union, silver shilling, second bust, 1703 (Vigo) (S.3586); after the union, silver shilling, third bust, 1708 (S.3610). *Good fine; very fine.* (2)  
\$300



2514\*

**Anne**, before the union, silver sixpence, 1703 (Vigo) (S.3590). *Toned, very fine or better.*  
\$150



2515\*

**Anne**, before the union, silver sixpence, 1705 (plumes) (S.3593). *Light grey tone, good fine.*  
\$150



2516\*

**Anne**, after the union, silver shilling, second bust, 1707E (Edinburgh) (S.3608). *Horizontal adjustment marks on obverse, lightly toned, very fine.*  
\$300

Ex C.S. Hodgson Collection Sale 116 (lot 1653).



2517\*

**Anne**, after the union, silver shilling, third bust, 1708/7E\* (Edinburgh) (ESC 1145A; S.3612). *Toned, nearly fine and scarce.*  
\$300



2518\*

**George I**, first bust, silver shilling, 1721, die break through 2 (S.3645; ESC 1171). *Very good.*  
\$100



2519\*

**George I**, silver sixpence, 1723 (SSC), small letters and large letters (S.3652). *Very fine; good very fine.* (2)  
\$150





2520\*

**George I**, halfpenny, 1717, "dump" first issue, struck on a broad flan of the second issue (S.3659). *Pitted surface, dark brown patina, possibly unique.*

\$500

Ex Baldwins Sale (lot 514).



2521\*

**George I - George III**, silver issues, 'Maundy' twopence, 1717 (S.3656), shilling, 1723 (S.3647), sixpence, 1758 (S.3711), 'Maundy' twopence, 1772 (S.3756), 'Maundy' penny 1800. *Very fine - nearly uncirculated.* (5)

\$250



2522\*

**George II**, old head, silver halfcrown, 1746 Lima (S.3695A). *Some mint bloom, nearly extremely fine.*

\$350



2523\*

**George II**, silver shilling, young laureate and draped bust left, 1728 plain (S.3699). *Toned, nearly fine.*

\$100



2524\*

**George II**, silver shilling, young head, 1741/39 (ESC 1202A; S.3701). *Grey toned with golden highlights, good very fine and rare in this condition.*

\$400

Ex Noble Numismatics Sale 120 (lot 1617).



2525\*

**George II**, old head, silver shilling, 1747 roses (S.3702). *Toned, good very fine.*

\$200



2526\*

**George II**, old head, silver shilling, 1745 Lima (S.3703). *Toned, nearly extremely fine.*

\$350



2527\*

**George II**, old head, silver shilling, 1750/46 (ESC 1710A; S.3704). *Toned, nearly very fine.*

\$200

Ex Noble Numismatics Sale 121 (lot 1993).





2528\*

**George II**, old head, silver shilling, 1758 (S.3704). *Toned, nearly extremely fine.*

\$200

Private purchase from Vince Bonici 20.8.87.



2529\*

**George II**, young bust, silver sixpences 1728 and 1732 roses and plumes. (S.3707). *Good fine.* (2)

\$200



2530\*

**George II**, old head, silver sixpence, 1743 and 1745 roses (S.3709). *Lightly toned, nearly very fine.* (2)

\$200



2531\*

**George II**, old head, silver sixpences, 1757 and 1758/7 (S.3711). *Good very fine.* (2)

\$150

Second from E.H. Crawford.

2532

**George II - Elizabeth II**, assorted issues, mostly base metal including 1972 crowns (20), 1977 crowns (9), 1980, 1981, 1951, 1953, 1965 (3), 1730 halfpenny, 1790 Charles Roe halfpenny; worn George IV halfcrown, mostly 20th century. *Fair - uncirculated.* (approx 200)

\$100



2533\*

**George III**, silver shilling, 1787 (S.3743). *Nearly extremely fine.*

\$150



2534\*

**George III**, silver shilling, 1787 (S.3746). *Toned, good very fine.*

\$100



2535\*

**George III**, silver sixpences, 1787 (S.3748, 3749). *Cleaned, nearly extremely fine; toned extremely fine.* (2)

\$100



2536\*

**George III**, emergency issue silver dollar (current for 4/9), oval countermark on Charles III Potosi mint eight reales 1794 PR (S.3765a). *Good very fine.*

\$750

Ex D.G.L. Worland Collection, from Noble Numismatic Sale (lot 2185) B.J. Hibbard Collection and Sale 53 (lot 1175).





2537\*

**George III**, Bank of England, silver dollar or five shillings, 1804 (S.3768), top leaf to left side of E. *Toned extremely fine.*

\$750

Ex D.G.L. Worland Collection, from Noble Numismatics Sale (lot 2667).



2541\*

**George III**, new coinage, silver crown, 1819 LIX (S.3787). *Lightly rubbed, toned, good very fine.*

\$500

Ex D.G.L. Worland Collection.



2538\*

**George III**, Bank of England five shillings, dollar, 1804, top leaf to centre of E (S.3768). *Has been tooled after removal of a brooch mount to the obverse otherwise grey toned nearly very fine.*

\$300



2542\*

**George III**, new coinage, silver shilling, 1816 (S.3790). *Toned, good extremely fine.*

\$100



2543\*

**George III**, new coinage, silver shilling, 1817 (S.3790). *Extremely fine.*

\$80

Ex D.G.L. Worland Collection.



2539

**George III**, second copper issue, copper proof 'cartwheel' penny 1797 (S.3777; Peck1123). *Nearly FDC and very scarce.*

\$800

In a slab by PCGS as PR62 bronzed.



2544\*

**George III**, new coinage, silver shilling, 1819/8 (S.3790; ESC 1235A). *Toned, nearly extremely fine.*

\$100



2540\*

**George III**, third copper issue, halfpenny, 1799 (S.3778). *Glossy red brown with traces of mint bloom, nearly uncirculated.*

\$100





2545\*

**George III**, new coinage, silver sixpence, 1817, 1819, and 1820 (S.2791). *Last toned, uncirculated - choice uncirculated.* (3)

\$350

2546

**George III**, new coinage silver shilling, 1816 (S.3790); **William IV**, shilling, 1836 (S.3835), sixpence, 1834 (2, one damaged), 1835 (damaged) (S.3836) (3); **Victoria**, groat (four pence), 1854, three-halfpence, 1841 (S.3915), halfpenny, 1878 (S.3956). *Poor - very fine.* (8)

\$50

2547

**George III - Queen Victoria**, shillings, sixpences, groats, threepences, two pences, one penny, halfpenny pieces, 1816-1899 period, balance of collection in plastic coin album, select coins in 2x2 holders, noted shillings 1854 (very good), re-entered date 1825, 1826 (nearly extremely fine), sixpence 1837/5 (ESC 1680A) (fair). *Fair- nearly uncirculated.* (252)

\$4,000

2548

**George III - Queen Victoria**, copper "cartwheel" twopence, 1797 (S.3776); crown, 1891 (S.3921); also, Rome, imperial, Antoninus Pius, very worn AE, dupondis or sestertius. *Very good; very good; poor.* (3)

\$120

2549

**George III - Queen Victoria**, copper "cartwheel" twopence, 1797 (S.3776); worn halfcrown, 1890 (S.3924); worn and mutilated florin, 1896 (S.3939); Italy, good luck token, 1931, silver plated. *Poor - fine.* (4)

\$60

2550

**George III - Queen Victoria**, copper "cartwheel" twopences, 1797 (3) (S.3776); penny, 1874 (S.3955). *The twopences are severely worn, mutilated and corroded, poor - very good.* (4)

\$30

2551

**George III**, third copper issue, halfpenny 1799 (S.3778); **William IV**, silver shilling 1836 (S.3835); copper penny, 1831 (S.3845); **Queen Victoria**, copper penny, 1851 (S.3948) distant colon: also a brass To Hanover counter 1862. *Very good - very fine.* (5).

\$100

2552

**George III - Elizabeth II**, a mixture of denominations, mostly G VI & QE II, minimal silver noted, includes some Channel Islands. *Loose in envelopes and bags, good - uncirculated.* (approx 200)

\$100



2553\*

**George IV**, crown, laureate head left, 1821 secundo (S.3805). *Slight surface marking, otherwise underlying brilliance, good extremely fine.*

\$750



2554\*

**George IV**, first type silver halfcrown, 1820 (S.3807). *Cleaned, otherwise good extremely fine.*

\$150



2555\*

**George IV**, laureate head left, silver halfcrown, second reverse shield on garter, 1823 (S.3808). *Some rim knocks, otherwise toned, good very fine.*

\$100



2556\*

**George IV**, silver shilling, laureate head left, 1821 (S.3810). *Toned, good very fine.*

\$200





2557\*

**George IV**, silver shilling, second reverse, 1824 (S.3811). *Lightly toned, with golden highlights, extremely fine.*

\$300



2558\*

**George IV**, silver shilling, third reverse, 1825/3 (ESC 1253B; S.3812). *Very good but very rare.*

\$100



2559\*

**William IV**, silver sixpence, 1831 (S.3836). *Toned, nearly extremely fine.*

\$120



2560\*

**Queen Victoria**, young head, silver crown, 1845 (S.3882). *Toned, nearly very fine.*

\$150



2561\*

**Queen Victoria**, Gothic crown, 1847, undecimo edge (S.3883). *Mirror-like fields, obverse field marks otherwise good extremely fine/ nearly uncirculated.*

\$5,000



2562\*

**Queen Victoria**, Gothic crown, 1847, undecimo edge (S.3883). *Good fine.*

\$2,000



2563\*

**Queen Victoria**, Godless florin, 1849 (S.4890); ESC 802) WW clear. *Cleaned and polished otherwise good very fine.*

\$100



2564\*

**Queen Victoria**, Gothic florin, 1867 (S.3895; ESC 870). *Lightly toned, nearly extremely fine.*

\$300



2565\*

**Queen Victoria**, Gothic florin, 1884 (S.3900; ESC 860). *Dusty toned, extremely fine.*

\$250





2566\*

**Queen Victoria**, young head, halfpenny, 1853, (S.3949), shilling, 1853 (S.3904); old head, threepence, 1897 (S.3942). *Traces of mint red, nearly uncirculated; die crack at 2 o'clock through top of oak wreath on reverse, and minor die flaw through G of GRATIA, extremely fine; good extremely fine.* (3)

\$200



2567\*

**Queen Victoria**, young head, silver shilling, 1856 (S.3904). *Good extremely fine.*

\$250



2568\*

**Queen Victoria**, young head, silver shilling, 1883 (S.3907). *Has been cleaned, nearly uncirculated.*

\$150



2569\*

**Queen Victoria**, young head, silver sixpence, 1838, double entered date (S.3908). *Good extremely fine.*

\$200



2570\*

**Queen Victoria**, young head, silver sixpence, 1878, DRITANNIAR error (S.3910). *Very good and rare.*

\$100



2571\*

**Queen Victoria**, young head, silver sixpence, 1880 (S.3912). *Attractive dark blue grey tone, nearly uncirculated.*

\$150



2572\*

**Queen Victoria**, young head, silver groats, 1838, 1838/oo (ESC 1931A) and 1851 (S.3913). *Good extremely fine; toned, good extremely fine; toned, nearly extremely fine/ extremely fine, the second and third very scarce in this condition.* (3)

\$500

The third ex C.R. Dean Collection (Noble Numismatics Sale 117 (lot 1841)).



2573\*

**Queen Victoria**, young head, silver threepences, 1839, 1850, and 1851 (S.3914). *First toned, nearly uncirculated, others uncirculated and rare in this condition.* (3)

\$600



2574\*

**Queen Victoria**, young head, silver threepence, 1858 error legend BRITANNIAB BEGINA (ESC 2065A; S.3914). *Very good and extremely rare.*

\$200





2575\*

**Queen Victoria**, young head, Maundy set, 1886 (S.3916).  
*Cleaned otherwise uncirculated.* (4)

\$200



Part

2576\*

**Queen Victoria**, Jubilee coinage, silver crown, 1887 (S.3921);  
double florin, 1887 (S.3923). *Very fine; good extremely fine.* (2)

\$150



Part

2577\*

**Queen Victoria**, Jubilee coinage, halfcrowns, 1887 (2),  
shilling 1887 (S.3924, 26). *Nearly extremely fine; extremely fine; uncirculated.* (3)

\$200



2578\*

**Queen Victoria**, Jubilee coinage, silver sixpences, 1888 and  
1889 (S.3929). *Choice uncirculated; uncirculated.* (2)

\$250



2579\*

**Queen Victoria**, Jubilee coinage, silver groat, 1888 (S.3930).  
*Nearly uncirculated.*

\$150



2580\*

**Queen Victoria**, Jubilee coinage, silver threepence, 1893  
(S.3931; ESC 2103). *Cleaned, good very fine and rare.*

\$100

2581

**Queen Victoria**, old head, silver crown, 1897LXI (S.3937).  
*Very fine.*

\$50



2582\*

**Queen Victoria**, old head, silver halfcrown, 1897 (S.3938).  
*Some brilliance on the obverse fields, nearly uncirculated.*

\$150

In a slab by NGC as AU58.



2583\*

**Queen Victoria**, old head, silver florins, 1896 and 1898  
(S.3939). *Nearly uncirculated; good extremely fine/uncirculated.* (2)

\$250



2584\*

**Queen Victoria**, old head, silver florin, 1899 (S.3939). *Light grey tone, extremely fine.*

\$100



2585\*

**Queen Victoria**, old head, silver shillings, 1893 small lettering, 1894, 1895 large rose (S.3940, 3940A). *Uncirculated.* (3)

\$200



Part

2586\*

**Queen Victoria**, young head copper penny, 1853 OT (S.3948); bun head bronze pennies 1860 (S.3954) 3/D; 1877 wide date (S.3954). *Nearly extremely fine; uncirculated; nearly uncirculated.* (3)

\$250

In slabs by PCGS as AU50, MS63RB, MS62BN.

2587

**Queen Victoria**, bronze farthing 1890 (S.3958/9). *Nearly full mint red, uncirculated.*

\$100

In a slab by NGC as MS64RB.



2588\*

**Queen Victoria - George V**, Gothic florin, 1873 (S.3893); Jubilee coinage, silver shilling, 1887 (S.3926); bronze farthing, 1913. *First very good; rest very fine.* (3)

\$300

2589

**Queen Victoria - Elizabeth II**, farthings, mixed dates, some with mint lustre. *In an album page, very good - nearly uncirculated.* (72)

\$120

Ex Barry McGown Scott Collection.

2590

**Queen Victoria - Elizabeth II**, florins to threepences, balance of collection in plastic coin album, all identified with ESC numbers, selected quality in 2x2 holders, noted 1944 threepence, 1905 florin (nearly fine), 1908 florin (very fine), Gothic florins (34 different); 1891 and 1892 florins (fine; very good). *Fair - FDC.* (313)

\$3,500



2591\*

**Edward VII**, silver crown, 1902 (S.3978). *Full mint bloom, uncirculated.*

\$400





Part

2592\*

Edward VII, silver halfcrowns, 1902 and 1908 (S.3980).  
Good very fine; extremely fine. (2)

\$500



2593\*

Edward VII, silver halfcrowns, 1903 and 1907 (S.3980).  
Toned, nearly fine; very fine/nearly extremely fine. (2)

\$150

2594

Edward VII, silver florins, 1902, 1903, 1906 (2), 1908 (2)  
(S.3981) (6). Very good - very fine. (6)

\$70



2595\*

Edward VII, silver shillings, 1902, 1906, and 1907 (S.3982).  
Toned extremely fine; extremely fine; nearly extremely fine.

(3)

\$200



2596\*

Edward VII, silver shilling, 1905 (S.3982). Toned, good very  
fine and rare in this condition.

\$500



2597\*

Edward VII, silver threepences, 1903, 1904, and 1908  
(S.3984). Extremely fine; rim nicks, extremely fine;  
uncirculated. (3)

\$100



Part

2598\*

George V, silver halfcrowns, 1915, 1916 (S.4011) (2), 1924  
(S.4021A); George VI, silver halfcrowns, 1944, 1945, and  
1946 (S.4080) (3), cupro nickel halfcrown 1948 (S.4101).  
Extremely fine - uncirculated. (7)

\$120

2599

George V, silver florins, 1912 (3), 1915 (6), 1916 (3), 1917  
(3), 1918 (8), 1919 (4) (S.4012) (27). Fine - good very fine.  
(27)

\$300



2600\*  
**George V**, silver florins, 1915 (S.4012), and 1932 (S.4038).  
*Uncirculated; toned nearly uncirculated.* (2)

\$500

2601  
**George V**, silver florins, 1915 (5), 1916 (5), 1917 (6), 1918 (7) (S.4012) (23). *Very fine - extremely fine.* (23)

\$350

2602  
**George V**, silver florins, 1915 (7), 1916 (7), 1917 (5), 1918 (11) (S.4012) (30). *Very fine - good very fine.* (30)

\$350

2603  
**George V**, silver florins, 1916 (2), 1918 (2), 1919 (S.4012) (5). *Good extremely fine.* (5)

\$100

2604  
**George V**, Jubilee crown, 1935 (S.); also Royal Mint official medal in silver (31mm) for the Jubilee. *Toned, extremely fine; toned, good extremely fine.* (2)

\$50

Ex Rudolph Pekarek Collection.

2605  
**George VI**, Festival of Britain proof set, 1951(S.PS18). *In maroon case of issue, FDC.*

\$400

2606  
**George VI - Elizabeth II**, nickel brass threepences, 1937 - 1967 (S.4112, 3, 4152, 3). *The 1946 and 1949 toned nearly very fine, most others with mint bloom good very fine - uncirculated.* (30)

\$50

2607  
**Elizabeth II**, decimal collection, 1968-2011, housed in four Dansco supreme albums, each coin the finest condition obtainable from either mint or proof sets, halfpenny to five pounds, sold with owner's detailed typed listing, no off metal strikings. *Choice uncirculated - FDC.* (329)

\$750

Ex Stephen Turner Collection.

2608  
**Elizabeth II**, decimal collection, 1971-1990, half new penny to five pounds in 2x2 holders, decimal collection in binder album. *Uncirculated - FDC.* (148)

\$150

2609

**Elizabeth II**, proof sets, 1970, 1971, 1972, 1973, 1974, 1975, 1976, 1977, 1978, 1979, 1980, 1981, 1982, 1983; proof silver pound, 1983; proof silver piedfort twenty five pence, 1982. *FDC.* (16)

\$200

2610

**Elizabeth II**, proof set, 2009. Twelve coins, one pence - five pounds, including Kew Gardens fifty pence. *With case of issue, FDC.*

\$1,500

Each coin slabbed and graded by PCGS as PR69DCAM, except for the penny as PR68DCAM.

2611

**Ireland**, George III, bank tokens for ten pence, 1806, 1813 (KM.Tn3, 5) (2); threepence, 1928 (KM.4). *Good fine - extremely fine.* (3)

\$50



2612\*

**Ireland**, George III, farthing, 1806 (S.6622). *Some mint red, nearly uncirculated.*

\$250

2613

**Eighteenth century tokens**, Edinburgh halfpenny, 1792 (DH.23-46); Lancashire, Rochdale, halfpenny, 1792 (DH.143-147); also, a gaming token, nineteenth century. *Good - good fine.* (3)

\$30



2614\*

**Buckinghamshire**, Slough, W. Till's Red Lion Inn halfpenny, 1794 (D&H 24). *Brown patina, nearly uncirculated and scarce.*

\$150



2615\*

**Gloucestershire**, Brimscombe Port, Thames and Severn Canal halfpenny, 1795 (D&H 60). *Glossy red brown patina, good extremely fine.*

\$80





2616\*

Middlesex, halfpenny token, obv. Princess of Wales three quarters facing, rev. portcullis and Prince's crest (D&H 980). *Nearly extremely fine.*

\$100

### Unique 18th Century Token Curiosity



2617\*

Nottingham/Shropshire, Donald and Co., pattern halfpenny 1792, man working in loom, 29 Bull Street Birmingham 1792, man with inclined plane at Ketley 1789 reverse (Shropshire D&H 9). *Attractive medium brown patina, extremely fine or about as struck and probably unique.*

\$8,000

Ex J.R. Farnell (part II, lot 9) and W.J. Noble Collection (sale 58B, lot 773, illustrated on front cover) and DNW sale 10 Oct 2011 (lot 636).



Part

2620\*

Unofficial farthings, tokens in copper, England, as per Withers numbers 407, 899, 1410, 1780, 2272, 2880 (illus), 2560, 0620, 2850a, 1881, 1940 (illus), 3130, 3673a, 3925 (illus), 4435 (illus), 4890, 5020, fully described and attributed in 2x2 holders. *Nearly very fine - extremely fine.* (17)

\$500

Ex Alexander Collection.



2618\*

Gloucestershire, Cheltenham, John Bastin & Co's penny 1812, view of St. Mary's Church in perspective, on avenue of trees, rev. legend (Davis 14, Withers 672). *Glossy brown patina, uncirculated and very rare.*

\$500

Ex W. Norman Collection 27 June 1905 (lot 192).



Part

2621\*

Scotland, unofficial farthings, (W.7281, 7282, 7310 and 7525); Ireland, unofficial farthings (W.5560, 5740, 6900 (illus)), England miscellaneous unofficial farthings, W (Bath) 180, 4910 (illus), 7840 (illus). *Fine - good very fine.* (10)

\$200

Ex Alexander Collection.



2619\*

Cornwall, Dolcoath Mine, Cornish Penny, rev. Coat of Arms (Davis Cornwall 14). *Extremely fine.*

\$80



2622\*

**Isle of Man**, Douglas Bazaar, August 1857 unofficial farthing (W.6910); Douglas, Falkner's Baazaar, Athol St, unofficial farthing (W.6920). *Very fine; good very fine both rare (2).*

\$350

Ex Alexander Collection. First from Sale 131 (lot 1476) second from Status Sale 282 (CL 8234).

## GREAT BRITAIN GOLD COINS



2623\*

**Ancient Britain**, Southern England, inscribed issue, Attrebatas and Regni, Verica (AD 10-43) gold stater (5.3g) COMF in sunken tablet, reverse horseman right with javelin, VIR above, REX below (S.170; VanA 500-1; ABC 1190). *Off centre on reverse, good fine and scarce.*

\$1,500

Ex Spink London Sale 69 (lot 12) and Noble Numismatics Sale 48 (lot 4672).



2624\*

**Charles I**, (1624-1649), gold crown group B, second bust, mm cross calvary (1625-6) (S.2711). *Nearly very fine.*

\$850

Ex J. Nesbitt Collection.





2625\*

Charles II, five guineas, second bust, 1681 (S.3331). *Three reverse rim bruises otherwise nearly very fine.*

\$12,500

Ex J. Nesbitt Collection.



2626\*

William and Mary, guinea, 1694 (S.3426). *Obverse Metal flaw at 8 otherwise, nearly extremely fine and rare thus.*

\$7,500

Ex J. Nesbitt Collection.



2627\*  
**Anne**, after the union, guinea, third bust, 1713 (S.3574).  
*Extremely fine and rare thus.*

\$3,500

Ex J. Nesbitt Collection.



2628\*  
**Anne**, after the union, guinea, third bust, 1714 (S.3574).  
*Toned, good fine.*

\$2,000

Ex J. Nesbitt Collection.



2629\*  
George I, quarter guinea, 1718 (S.3638). *Nearly extremely fine.*

\$1,000

Ex J. Nesbitt Collection.



2630\*  
George III, guinea, fourth bust, 1775 (S.3728). *Obverse*  
*hairline scratches otherwise nearly uncirculated.*

\$2,500

Ex J. Nesbitt Collection.



2631\*  
George III, guinea, fifth bust or spade type, 1792 (S.3729).  
*Mount removed from top otherwise nearly very fine.*

\$1,250

Ex J. Nesbitt Collection.



2632\*  
George III, guinea, 1793 (S.3729). *Has been mounted, very good/ fine.*

\$1,100

Ex J. Nesbitt Collection.



2633\*  
**George III, guinea, fifth bust or spade type, 1798 (S.2729).**  
*Toned, extremely fine.*

\$1,600

Ex J. Nesbitt Collection.



2634\*  
George III, half guinea, fifth bust or spade type, 1793  
(S.3735). *Good very fine.*

\$800

Ex J. Nesbitt Collection.



2635\*  
George III, half guinea, fifth bust or spade type, 1794 (S.3735). *Has been bent and straightened, toned, very fine.*

\$800

Ex J. Nesbitt Collection.





2636\*

**George III**, half guinea, seventh laureate head right, 1809. *Nearly uncirculated.*

\$1,500

Ex J. Nesbitt Collection.



2637\*

**George III**, third guinea, first laureate head right, 1797 (S.3738). *Tooled, good very fine.*

\$600

Ex J. Nesbitt Collection.



2638\*

**George III**, third guinea, first laureate head right, 1801 (S.3739). *Toned, very fine.*

\$600

Ex J. Nesbitt Collection.



2639\*

**George III**, third guinea, second laureate head right, 1808 (S.3740). *Good extremely fine.*

\$1,000

Ex J. Nesbitt Collection.



2640\*

**George III**, third guinea, second laureate head right, 1809 (S.3740). *Good extremely fine/ nearly uncirculated.*

\$900

Ex J. Nesbitt Collection.



2641\*

**George III**, quarter guinea, 1762 (S.3741). *Slight bend otherwise good very fine.*

\$500

Ex J. Nesbitt Collection.



2642\*

**George III**, new coinage, sovereign, 1817 (S.3785). *Toned, very fine.*

\$1,800

Ex J. Nesbitt Collection.



2643\*

**George III**, new coinage, sovereign, 1820, closed 2 (S.3785C). *Nearly very fine.*

\$1,500

Ex D.G.L. Worland Collection.



2644\*

**George III**, new coinage, sovereign, 1820 (S.3785C). *Nearly very fine.*

\$1,500

Ex J. Nesbitt Collection.



2645\*

**George III**, new coinage, sovereign, 1820 (S.2785c). *Has been mounted otherwise very good.*

\$1,200

Ex J. Nesbitt Collection.



2646\*  
George III, new coinage, half sovereign, 1820 (S.3786).  
*Good extremely fine.*

\$3,000



2647\*  
George IV, bare head, two pounds 1823, lettered edge  
(S.3798). *Nearly extremely fine/ extremely fine.*

\$3,500



2648\*  
George IV, bare head, two pounds, 1823 (S.3798). *Has been mounted, very good.*

\$2,500

Ex J. Nesbitt Collection with Lawson's sale envelope 16.11.55 (lot 213)  
18.10.0.



2649\*  
George IV, laureate head left, sovereign, 1821 (S.3800).  
*Fine.*

\$1,500

Ex J. Nesbitt Collection.



2650\*  
George IV, laureate head, sovereign, 1822 (S.3800). *Nearly extremely fine.*

\$1,500

Ex D.G.L. Worland Collection.



2651\*  
George IV, bare head left, sovereign, 1825 (S.3801). *Nearly very fine.*

\$1,500

Ex J. Nesbitt Collection.



2652\*  
George IV, bare head left, sovereign, 1827 (S.3801). *Very fine.*

\$1,500

Ex J. Nesbitt Collection.



2653\*  
George IV, bare head left, sovereign, 1830 (S.3801). *Good very fine.*

\$2,200

Ex J. Nesbitt Collection.



2654\*  
William IV, sovereign, 1836 (S.3829B). *Fine.*

\$1,250

Ex J. Nesbitt Collection.





2655\*

William IV, sovereign, 1837 (S.3829B). *Extremely fine.*  
\$2,000



2658\*

William IV, half sovereign, 1837 (S.3831). *Uncirculated/*  
*choice uncirculated and rare in this state.*

\$6,000

2659

No Lot.



2656\*

William IV, proof half sovereign, 1831, plain edge (S.3830).  
*Surface marks otherwise nearly FDC and rare.*

\$7,000



Part



2660\*

Queen Victoria, young head, sovereigns, 1858 small date  
(S.3852D, 1863 die no 13, 1864 die no 28, 1865 die no 37,  
1866 die no 49, 1869 die no 39 (S.3853), 1872 die no 23  
(S.3853B). *Very fine - extremely fine.* (7)

\$7,500

2657\*

William IV, half sovereign, 1836 (S.3831). *Nearly*  
*uncirculated/ uncirculated and rare in this state.*

\$4,000



2661\*

Queen Victoria, young head, sovereign, 1870 die no 122  
(S.3853B). *Good very fine.*

\$1,100



2662\*

Queen Victoria, young head, sovereign, 1872 die no 105  
(S.3853B). *A little rubbed otherwise nearly extremely fine.*

\$1,100



2663\*  
**Queen Victoria**, young head, sovereign, 1884 (S.3856B).  
*Nearly very fine.*

\$1,100

2664  
**Queen Victoria**, young head, half sovereign, 1871 die no 12 (S.3860). *Fine.*

\$550



2665\*  
**Queen Victoria**, Jubilee coinage, five pounds, 1887 (S.3864).  
*Underlying brilliance, nearly uncirculated.*

\$6,000



2666\*  
**Queen Victoria**, Jubilee coinage, five pounds, 1887 (S.3864).  
*A little rubbed otherwise good extremely fine.*

\$5,500

Ex J. Nesbitt Collection.



2667\*  
**Queen Victoria**, Jubilee coinage, five pounds, 1887 (S.3864),  
 jeweller's copy (40.04g). *Nearly uncirculated.*

\$5,000

Ex J. Nesbitt Collection.



2668\*  
**Queen Victoria**, Jubilee coinage, two pounds, 1887 (S.3865).  
*Considerable mint bloom, nearly uncirculated.*

\$3,000



2669\*  
**Queen Victoria**, Jubilee coinage, two pounds, 1887 (S.3865).  
*Good extremely fine.*

\$2,400

Ex D.G.L. Worland Collection.



2670\*  
**Queen Victoria**, Jubilee coinage, two pounds, 1887 (S.3865).  
*Polished otherwise good extremely fine.*

\$2,500

Ex J. Nesbitt Collection.

2671  
**Queen Victoria**, Jubilee head sovereigns, 1889, 1892,  
 (S.3866B,C); old head sovereigns 1899, 1900 (S.3874).  
*Nearly very fine - good very fine. (4)*

\$4,000

2672  
**Queen Victoria**, Jubilee coinage, sovereign, 1892 (S.3866c).  
*Nearly extremely fine.*

\$1,100





2673\*

Queen Victoria, sovereign, 1892 (S.3866C), jeweller's copy. *Extremely fine.*

\$800



Part

2674\*

Queen Victoria, Jubilee coinage, half sovereigns, 1887 (S.3869). *Good very fine; extremely fine; good extremely fine.* (3)

\$1,800



2675\*

Queen Victoria, old head, five pounds, 1893 (S.3872). *Nearly uncirculated.*

\$7,500



2676\*

Queen Victoria, old head, five pounds, 1893 (S.3872). *Nearly extremely fine.*

\$6,000

Ex J. Nesbitt Collection.



2677\*

Queen Victoria, old head, half sovereign, 1896 (S.3878). *Nearly uncirculated.*

\$600



2678\*

Queen Victoria, old head, half sovereign, 1897 (S.3878). *Uncirculated.*

\$600



2679\*

Queen Victoria, old head, half sovereign, 1901 (S.3878). *Uncirculated.*

\$600



2680\*

Edward VII, matte proof five pounds, 1902 (S.3966). *Nearly FDC.*

\$6,500



2681\*

Edward VII, five pounds, 1902 (S.3966), early jeweller's copy (40.15g), milled edge with high rim. *Nearly uncirculated.*

\$5,000

Ex J. Nesbitt Collection.



2682\*

Edward VII, two pounds, 1902 (S.3968). *Nearly uncirculated.*

\$2,700



2683\*

Edward VII, two pounds, 1902 (S.3967). *Small scratch on neck otherwise nearly uncirculated.*

\$3,000

Ex J. Nesbitt Collection.



2684\*

Edward VII, two pounds, 1902 (S.3967), early jeweller's copy? (15.76g). *Highly polished ex jewellery, otherwise fine.*

\$2,000

Ex J. Nesbitt Collection.

2685\*

Edward VII, sovereigns, 1904, 1906, and 1910 (S.3969). *Very fine; good very fine.* (3)

\$3,000



2686\*

Edward VII, sovereign, 1907 (S.3969). *Extremely fine.*

\$950

2687

Edward VII, sovereign, 1908 (S.3969). *Very fine.*

\$950



2688\*

Edward VII, half sovereign, 1903 (S.3974A). *Nearly extremely fine.*

\$600

2689

Edward VII, half sovereign, 1910 (S.3974B). *Fine.*

\$500



2690\*

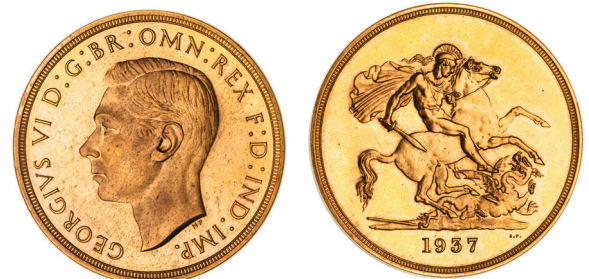
George V, proof five pounds, 1911 (S.3994). *Surface marks otherwise nearly FDC.*

\$7,000

2691

George V, sovereigns, 1911 (2), 1912 (5), 1915 (S.3996). *Nearly extremely fine - nearly uncirculated.* (8)

\$9,000



2692\*

George VI, specimen set, 1937, comprising five and two pounds, sovereign and half sovereign, all plain edges (S.PS15). *In maroon Royal Mint case of issue, nearly FDC, basically unmarked save for a minute hairline on the reverse of the two pounds.* (4)

\$20,000

Ex Lt. Col. McMahon.





2693\*

George VI, proof set, 1937, five pounds, two pounds, sovereign, and half sovereign, all plain edges (S.PS15). *With Royal Mint plush case of issue, minor contact marks on each, mainly on the obverse, the half sovereign the most impaired, nearly FDC.* (4)

\$16,000



2694\*

George VI, proof half sovereign, 1937, plain edge (S.4077). *FDC.*

\$3,000



Part

2695\*

Elizabeth II, sovereigns, 1958, 1974 (2) (S.4125; SC1). *Uncirculated.* (3)

\$3,300



Part

2696\*

Elizabeth II, sovereigns, 1958, 1959, 1962, 1963, 1964, 1965, 1966, and 1967 (S.4125). *Uncirculated.* (8)

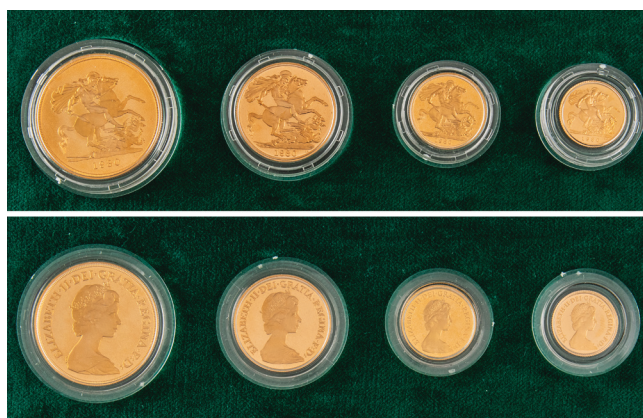
\$9,000



2697\*

Elizabeth II, sovereign, 1966 (S.4125), and 1976 (S.SC1). *Uncirculated.* (2)

\$2,200



2698\*

Elizabeth II, gold proof four coin set, 1980, five pounds, two pounds, sovereign and half sovereign (S.PGS01). *In green case of issue, Royal Mint logo on inside lid, with certificate, deep orange gold colouration, FDC.*

\$6,000





2699\*

**Elizabeth II**, Commemorative Proof Coin Collection, 1981, includes, proof halfpenny, penny, two pence, five, ten, fifty pence, crown, sovereign & five pounds (S-PGS02). *In case of issue, FDC.*

\$5,700



2700\*

**Elizabeth II**, proof gold three coin set, 1983, two pounds, sovereign and half sovereign (S.PGS04). *In case of issue, FDC.*

\$3,500



2701\*

**Elizabeth II**, proof set, five pounds, sovereign and half sovereign, 1984 (S.PGS05). *In Royal Mint case of issue, FDC. (3)*

\$7,000



2702\*

**Elizabeth II**, proof sovereign 1979 (S.SC1). *In case of issue, FDC.*

\$1,000

2703

**Elizabeth II**, proof sovereign, 1979 (S.SC1). *In case of issue, missing certificate, FDC.*

\$950

2704

**Elizabeth II**, proof sovereigns, 1979, 1980 and 1981; proof half sovereign 1980. *In cases of issue, FDC. (4)*

\$3,500



2705\*

**Elizabeth II**, proof sovereign, 1980 (S.SC1). *FDC.*

\$1,100

2706

**Elizabeth II**, proof sovereign, 1980 (S.SC1). *In case of issue, FDC.*

\$1,000

2707

**Elizabeth II**, proof sovereigns, 1980, 1981, 1982 (S.SC1). *In cases of issue with certificates, FDC. (3)*

\$2,800



2708\*

**Elizabeth II**, proof sovereign, 1981 (S.SC1). *In wallet of issue with certificate, FDC.*

\$1,000

2709

**Elizabeth II**, proof sovereigns, 1981 (S.SC1). *In cases of issue with certificates, FDC. (2)*

\$1,900

2710

**Elizabeth II**, proof sovereign, 1982 (S.SC1). *Without case and certificate, FDC.*

\$1,000

2711

**Elizabeth II**, proof half sovereigns, 1980 (3), 1982 (S.SB1). *In cases of issue with certificates, FDC. (4)*

\$2,000



2712

Elizabeth II, proof half sovereigns, 1980 (3), 1982 (S.SB1).  
In cases of issue with certificates, FDC. (4)

\$1,900



2713\*

Elizabeth II, proof twenty five pounds, 1987 Britannia (S.B01). FDC.

\$1,500

In a slab by NGC as PF69 ultra cameo.

2714

Elizabeth II, quarter sovereign, 2009 (S.SA1).  
Uncirculated.

\$220



2715\*

Isle of Man, Elizabeth II, Bicentenary of Australia, 1988, half ounce fine gold crowns, 1988, by Pobjoy Mint (cf KM.222, 3, 4, 5). In case issue with gold plated mint maker's limited issue medal, case damaged on outside, FDC. (4)

\$9,000