

PROCLAMATION COINS



915*
Bolivia, Charles III, silver eight reales, 1808 P.J., Potosi mint (KM. 73), *another same date and mint, shipwreck salvage? Good very fine; fine.* (2)

\$250

Ex Barry McGown Scott Collection.



916*
Brazil, John V, gold 12,800 reis or 'Johanna', 1732 M (KM.139). *Adjustment marks on the obverse, a little rubbed, otherwise nearly extremely fine.*

\$6,000



917*
Brazil, Maria I and Peter III, 6,400 reis or half johanna, 1785 R, (Rio) (KM.199, Fr.76). *Nearly uncirculated.*

\$2,000

Ex D.G.L. Worland Collection.



918*
Great Britain, George III, gold guinea, fifth bust or spade type, 1788 (S.3729). *Very fine.*

\$1,500



919*
Great Britain, George III, gold guinea, fifth bust or spade type, 1794 (S.3729). *Nearly very fine/very fine.*

\$1,000

Ex Barry McGown Scott Collection.



920*
Great Britain, George III, gold guinea, fifth bust or spade type, 1798 (S.3729). *Extremely fine.*

\$1,000



921*
Great Britain, George III, gold half guinea, fifth bust or spade type, 1796 (S.3730). *Cleaned otherwise good very fine.*

\$650

Ex Barry McGown Scott Collection, from Colonial Sale 23/10/04 (lot 307).



Part

922*
Great Britain, George III, silver shillings, 1787, without seme of hearts (S.3743); another with seme of hearts (S.3746). *Nearly extremely fine; extremely fine.* (2)

\$200

Ex Barry McGown Scott Collection.

923

Great Britain, George III, silver sixpences, 1787 without
semee of hearts (S.3748)(4); with semee of hearts (S.3749).
Fine - good extremely fine. (5)

\$200

Ex Barry McGown Scott Collection.

924

Great Britain, George III, copper cartwheel twopence, 1797
(S.3776). *Nearly fine.*

\$50



925*

India, Bengal Presidency, gold mohur, Murshidabad type, Yr
19 (1793) (KM.102, Fr.1537) (12.4g). *Extremely fine.*

\$1,500

Ex D.G.L. Worland Collection.



926*

India, Bengal Presidency, Murshidabad type, gold mohur,
year 19 (1793), tiny dot almost between two large dots,
(KM.103). *Nearly uncirculated.*

\$1,500



Part

927*

India, Bengal Presidency, silver rupees, Murshidabad
type year 19 (1793)(KM.98.1)(4); straight grained edge
(KM.108). *Very fine - good extremely fine.* (5)

\$400

Ex Barry McGown Scott Collection, from Colonial Sales 2004, 2000, and
Roxbury 25/2/06 (lot 1123).



928*

India, Madras Presidency, gold star pagoda (1740-
1807)(KM.303). *Nearly extremely fine.*

\$450

Ex Barry McGown Scott Collection from Colonial Sale 26/2/05 (lot 234).



929*

India, Madras Presidency, gold pagoda (1808-1815)(KM.356).
Nearly extremely fine.

\$600

Ex Barry McGown Scott Collection, from Colonial Sale 23/10/04 (lot
314).



930*

India, Madras Presidency, silver quarter pagoda (1808-
1815)(KM.352)(18 stars). *Toned very fine.*

\$100



931*

Mexico, Charles III, eight escudos, 1798 FM (KM.159).
*Vertical scratch behind bust, mint bloom, good extremely
fine - nearly uncirculated.*

\$3,000



932*

Mexico, Charles III, silver eight reales, pillar type, 1760 M.M., Mexico City Mint (KM.105). *Attractive mint bloom, grey toning, extremely fine & rare thus.*

\$500

Ex Barry McGown Scott Collection.

935*

Mexico, Charles III, silver eight reales, pillar type, 1770 F.M. Mexico City Mint (KM.105). *Rubbed otherwise nearly very fine.*

\$250

Ex Barry McGown Scott Collection, from Colonial Sale 23/10/04 (lot 317).



936

Mexico, Charles III, silver eight reales, 1791 F.M. Mexico City Mint (KM.109), another dated 1797 with chinese chop marks. *Good fine; very good.* (2)

\$150

Ex Barry McGown Scott Collection.



Part



937*

Mexico, Charles III, silver eight reales, 1793 F.M. Mexico City Mint (KM.104). *Rim bruises, nearly very fine/very fine.*

\$150

Ex Barry McGown Scott Collection, from Colonial Sale 26/6/04 (lot 277).

933*

Mexico, Charles III, silver eight reales (2), pillar type, 1760 M.M. and 1767 M.F., Mexico City mint (KM.105); also a lead copy dated 1757. *Test cut otherwise good very fine; nearly very fine.* (3)

\$300

Ex Barry McGown Scott Collection.



Part

938*

Mexico, Charles III, silver eight reales, 1796 F.M. Mexico City Mint (KM.109); another, 1797 F.M. (KM.109). *Good very fine; porous otherwise nearly very fine.* (2)

\$250

Ex Barry McGown Scott Collection, second from Colonial Sale 23/10/04 (lot 325).

934*

Mexico, Charles III, silver eight reales, pillar type, 1769 MF Mexico City mint (KM.105). *Even grey tone, good very fine.*

\$300

Ex Barry McGown Scott Collection, from IAG Sale 25/8/02 (lot 28).



939*

Mexico, Charles III, silver eight reales, 1800 F.M. Mexico City Mint (KM.109). *Some mint bloom, nearly extremely fine/ extremely fine.*

\$200

Ex Barry McGown Scott Collection, from Noble Numismatics Sale 78 (lot 1235).



942*

Mexico, Charles III, silver eight reales, 1803 F.T. Mexico City Mint (KM.109); another but dated 1808 T.H. (KM.109). *Nearly very fine/very fine; good very fine. (2)*

\$300

Ex Barry McGown Scott Collection.



940*

Mexico, Charles III, silver eight reales, 1805 T.H. Mexico City Mint (KM.109). *Very fine/ good very fine.*

\$150

Ex Barry McGown Scott Collection, from P.Brooks 23/8/07 with his tag.



943*

Mexico, Ferdinand VII, silver eight reales, 1809 T.H. Mexico City Mint (KM.110). *Mint bloom on reverse, good very fine.*

\$200

Ex Barry McGown Scott Collection, from IAG Sale 5/2/06 (lot 35).



941*

Mexico, Charles III, silver eight reales, 1806 T.H. Mexico City Mint (KM.109). *Cleaned, nearly very fine/very fine.*

\$150

Ex Barry McGown Scott Collection, from P.Brooks 23/8/07 with his tag.



944*

Mexico, Ferdinand VII, silver eight reales, 1811 H.J. Mexico City Mint (KM.110). *Toned, nearly very fine.*

\$150

Ex Barry McGown Scott Collection.



945*

Netherlands, Holland, gold ducat, 1781 (KM.12.3, Delmonte 775, F.250). Nearly uncirculated, rare as such.

\$900

Ex D.G.L. Worland Collection.



949*

Netherlands, Batavian Republic, Gelderland, silver gulden, 1795 (KM.8.1). Toned, nearly extremely fine.

\$200

Ex Barry McGown Scott Collection from Colonial Sale 11/2/06 (lot 324).



946*

Netherlands, Holland, silver 1/4 gulden (or 5 stiver) 1759 (KM.100). Extremely fine.

\$100

Ex Barry McGown Scott Collection.



950*

Netherlands, East Indies, Westfriesland, silver gulden, 1786 VOC (KM.139). Very fine/good very fine.

\$200

Ex Barry McGown Scott Collection, from Colonial sale 23/7/05 (lot 390).



947*

Netherlands, Holland, silver gulden, 1764 (KM.73). Toned, good fine.

\$100

Ex Barry McGown Scott Collection, from Colonial Sale 11/2/06 (lot 325).



951*

Peru, Charles III, eight reales, pillar type, 1770 Lima (KM.107). Nearly very fine.

\$350

Ex Noble Numismatics Sale (lot 1162).

In a slab by PCGS as tooled XF detail.



948*

Netherlands, Westfriesland, silver gulden, 1793 (KM.102.3). Full mint bloom, uncirculated.

\$200

Ex Barry McGown Scott Collection, from Colonial sale 23/7/05 (lot 300).



952*

Peru, Charles III, silver eight reales, 1797 I.K. Lima Mint (KM.97). *Considerable mint bloom, extremely fine.*

\$200

Ex Barry McGown Scott Collection, from Colonial Sale 26/2/05 (lot 240).



953*

Peru, Charles III, silver eight reales, 1803 J.P. Lima Mint (KM.97). *Nearly full original mint bloom, nearly uncirculated.*

\$350

Ex Barry McGown Scott Collection, from Colonial Sale 23/10/04 (lot 326).



954*

Portugal, Maria I, gold four escudos or peca, 1793 (KM.299; Vaz M1.14). *Well struck, good extremely fine and scarce.*

\$1,750

Ex Dr L.J. Sherwin Collection from CNG Triton Sale XVI 9.1.2013 (lot 1523) (\$US3525).

HOLEY DOLLARS AND DUMPS

Unlisted and Well Struck Holey Dollar



955*

New South Wales, five shillings or holey dollar, 1813, struck on a Charles III silver eight reales, 1793 F.M. Mexico City Mint (not listed in Mira/Noble, would be 1793/9) dies A/6.30:I/1. *Well struck, H for Henshall very clear, slight oxidation in three spots, otherwise a really good very fine and very rare.*

\$150,000

Ex Spink UK Sale 4 March 1997 (lot 611) catalogue 1145.



956*

New South Wales, fifteen pence or dump, 1813 (Mira dies A/1). *Traces of centre of reverse of Spanish American eight reales on the obverse, old cut at top of obverse, with three slight rim bruises, well struck, good very fine.*

\$12,000

Ex Noble Numismatics Sale 108 (lot 1246).

957

New South Wales, holey dollar 1813 (2) replicas by Becker for Varne (W.A.) in 1970s (see Mira-Noble, p. 76), one using a 1780 matrix and the other 1796, also a replica 1813 dump. *Very fine.* (3)

\$200

AUSTRALIAN GOLD COINS

ADELAIDE ASSAY OFFICE

Early Die State Type 2 Adelaide Pound



958*

Adelaide pound, 1852, second type with crenellated inner circle on the reverse. *Minor marks left of crown, sharply struck and early die state example, good extremely fine.*

\$15,000

Ex Spink Australia Sale 11 (lot 518), and offered in Noble Numismatics Sale 89 (lot 381).

PORT PHILLIP, KANGAROO OFFICE.



959*

Port Phillip, Kangaroo Office, restruck gilt bronze (12.49g) one ounce piece, 1853 'Pure Australian Gold', plain edge. From original dies by W.J. Taylor, London, restrike by Stokes 1919 (?). *Good extremely fine and extremely rare if not unique.*

\$2,000

Private purchase from the Rare Coin Company with their tags.

SYDNEY MINT SOVEREIGNS



960*

Queen Victoria, first type, 1855. *Some mint bloom in the legends and devices, surface marks otherwise very fine.*

\$5,000

Ex Spink Australia Sale 11 (lot 511) with lot card.



962*

Queen Victoria, second type, 1857, wreathed head left by L.C. Wyon. *Extremely fine or better and rare thus.*

\$1,680

Private purchase from Monetarium with their holder.

Finest Known Overdate Rarity 1860



961*

Queen Victoria, first type, 1855. *Porous from acid cleaning, minor surface contact marks otherwise nearly extremely fine.*

\$5,000

Ex Frederick William Nissen, Bundaberg prior to 1892, hence in the family by descent. Nissen's were jewellers in Queen St, Brisbane from 1892.



963*

Queen Victoria, second type, 1860, 6 over 5. *Nearly uncirculated and extremely rare, finest known of the variety.*

\$5,600

Ex Chris Hall Collection, from Noble Numismatics Sale 92 (lot 1351).



964*

Queen Victoria, second type, 1864. *Cut at top of Queen's wreath, surface marks, otherwise extremely fine/good extremely fine.*

\$1,300



965*

Queen Victoria, second type, 1870. *Full original mint bloom, metal flaw under neck, choice uncirculated.*

\$1,820



966*

Queen Victoria, second type, 1870. *Full cartwheeling mint bloom, nearly uncirculated.*

\$1,500

Ex D.G.L Worland Collection.

SYDNEY MINT HALF SOVEREIGNS



967*

Queen Victoria, first type, 1856. *Very good.*

\$750

Uncirculated First Date of Type



968*

Queen Victoria, second type, 1857, with wreathed head left by L.C. Wyon. *Considerable original mint bloom, minor surface marks, otherwise uncirculated.*

\$12,500

In a slab by PCGS as MS61.



969*

Queen Victoria, second type, 1857, wreathed head left by L.C. Wyon. *Nearly uncirculated.*

\$4,000

Ex Noble Numismatics Sale 113 (Lot 1181).



970*

Queen Victoria, second type, 1858. *Struck with clashed reverse die, slight obverse smoothing in two areas, otherwise extremely fine.*

\$2,000



971*

Queen Victoria, second type, 1859. *Mint bloom in the legends, nearly extremely fine.*

\$1,050

In a slab by PCGS as XF45.



976*

Queen Victoria, 1883 Sydney. *Nearly extremely fine/ extremely fine.*

\$850

Ex M.R. Roberts auction.



972*

Queen Victoria, second type, 1864, Arabic 1. *Good very fine.*

\$840

In a slab by PCGS as AU50.



977*

Queen Victoria, 1884 Melbourne. *Obverse surface marks, otherwise nearly uncirculated.*

\$3,000

Ex Bentley Collection (part 2, Baldwins Sale 76, 27 September 2012, lot 754).

IMPERIAL SOVEREIGNS - SHIELD REVERSE



973*

Queen Victoria, 1872/1 Melbourne. *Good very fine.*

\$1,250

Private purchase from M.R. Roberts 21.9.79 per DA (Dave Allen) not identified as an overdate.



974*

Queen Victoria, 1873 Sydney. *Very fine/good very fine.*

\$850

Private purchase from M.R. Roberts 26/9/80 with their envelope.



975*

Queen Victoria, 1880 Sydney. *Nearly extremely fine/ extremely fine.*

\$800



978*

Queen Victoria, 1887 Melbourne. *Good extremely fine/nearly uncirculated and very rare, especially in this condition.*

\$9,500

Ex Noble Numismatics Sale 115 (lot 1289).



979*

Queen Victoria, 1887 Sydney. *Good very fine.*

\$850

Private purchase from M.R. Roberts 12/8/80 with their ticket.

IMPERIAL SOVEREIGNS - ST GEORGE REVERSE



980*
Queen Victoria, 1878 Melbourne. *Nearly uncirculated.*
\$900



981*
Queen Victoria, 1879 Melbourne (McD 157). *Good extremely fine.*
\$900

Ex Noble Numismatics sale.



982*
Queen Victoria, 1881 Melbourne (McD.161). *Nearly uncirculated.*
\$800



983*
Queen Victoria, 1883 Melbourne (McD.165a). *Extremely fine/ good extremely fine.*
\$800



984*
Queen Victoria, 1884 Melbourne (McD.167b). *Extremely fine.*
\$800



985*
Queen Victoria, 1886 Melbourne. *Nearly uncirculated.*
\$850



986*
Queen Victoria, 1885 no BP (McD.169b). *Extremely fine.*
\$800



987*
Queen Victoria, young head, 1887 Melbourne. *Good very fine.*
\$750



988*
Queen Victoria, 1892 Sydney. *Good extremely fine.*
\$800



Part

989*
Queen Victoria, old head, complete date and mintmark set, 1893-1901, Sydney (9), Melbourne (9), Perth (3). *Nearly uncirculated.* (21)
\$15,000

Ex Spink Australia sale 15 (lot 634) with lot card.



990*
Queen Victoria, 1896 Melbourne. *Nearly uncirculated.*
 \$750



991*
Queen Victoria, 1899 Perth. *Nearly uncirculated.*
 \$1,000

Private purchase from R.C.C. with their tag, 29.5.12.



992*
Queen Victoria, 1901 Sydney. *Nearly uncirculated.*
 \$800

Private purchase from Spink Australia 24/8/80.



Part

993*
Edward VII, 1902-1910 Melbourne, complete set, above average. *Nearly uncirculated - uncirculated.* (9)
 \$6,750

Ex Barry McGown Scott Collection.



Part

994*
Edward VII, 1902-1910 Perth, above average set. 1909 polished and surface marks, otherwise nearly uncirculated - uncirculated. (9)
 \$6,750

Ex Barry McGown Scott Collection.



Part

995*
Edward VII, 1902-1910 Sydney, complete, an above average set. *Nearly uncirculated - uncirculated.* (9)
 \$6,750

Ex Barry McGown Scott Collection.



996*

George V, 1915 Sydney. *Uncirculated.*

\$800

Ex Bank of Albania gold sale 1990-1, via M. R. Roberts with their tag.

997

George V, 1915 Sydney. *Uncirculated.*

\$800

Ex Bank of Albania gold sale 1990-1 via M. R. Roberts with their tag.



998*

George V, 1919 Melbourne. *Flat on rider's chest, otherwise good extremely fine and scarce.*

\$1,000



999*

George V, 1921 Melbourne. *Has been cleaned, otherwise extremely fine and extremely rare.*

\$20,000

Ex David Ross Collection, private purchase Nov 07.



1000*

George V, 1928 Melbourne. *Nearly uncirculated and rare.*

\$2,200



1001*

George V, small head, 1931 Perth. *Choice uncirculated.*

\$950

In a slab by PCGS as MS63.

IMPERIAL HALF SOVEREIGNS



1002*

Queen Victoria, 1881 Melbourne. *Extremely fine/good extremely fine.*

\$2,600

Ex Reserve Bank of Australia Sale (lot 667).

In a slab by NGC as AU50.



1003*

Queen Victoria, 1883 Sydney (McD.25). *Extremely fine/good extremely fine.*

\$1,800



1004*

Queen Victoria, 1884 Melbourne. *Nearly uncirculated and rare thus.*

\$3,200

Ex Reserve Bank of Australia Sale (lot 702).

In a slab by NGC as AU53.



1005*

Queen Victoria, 1886 Sydney. *Good very fine or slightly better.*

\$630

In a slab by PCGS as AU50.



1006*

Queen Victoria, Jubilee head, 1887 Melbourne, (MCD 33c). *Well struck, nearly uncirculated.*

\$900

Private purchase from R.C.C. with their tag, 29.5.12.



1007*

Queen Victoria, 1889 Sydney. *Extremely fine and scarce thus.*

\$900



1008*

Queen Victoria, 1891 Sydney, no JEB (MCD 38a). *Uncirculated.*

\$1,200

Private purchase from R.C.C. with their tag, 29.5.12.



1009*

Queen Victoria, Jubilee head, 1893 Melbourne. *Good extremely fine and scarce thus.*

\$1,000



1010*

Queen Victoria, 1900 Melbourne. *Nearly uncirculated and rare thus.*

\$840

Ex Reserve Bank of Australia Sale, lot 849.



1011*

Edward VII, 1908 Perth. *Good - very fine and scarce.*

\$500



1012*

George V, 1914 Sydney. *Good extremely fine.*

\$380



1013*

George V, 1915 Melbourne. *Nearly uncirculated.*

\$400



1014*

George V, 1915 Perth. *Uncirculated.*

\$500

In slab by PCGS as MS63.



1015*

George V, 1915 Sydney. *Choice uncirculated.*

\$450

In a slab by PCGS as MS65.



1016*

George V, 1915 Sydney. *Uncirculated.*

\$420

Private purchase from M.R. Roberts, 26/08/80.



1018*

George V, Melbourne Mint proof Canberra commemorative florin, 1927. *Nearly FDC and rare.*

\$5,600

Probably ex A.H. Baldwin and Spink Australia, later with Jaggards (?) 2x2 holder.

AUSTRALIAN COMMONWEALTH COINS

PATTERNS AND PROOFS



1017*

George V, Melbourne Mint specimen shilling 1916M. *Die axis at 45 degrees, frosted mint bloom with brilliant die flashes, nearly FDC and rare.*

\$3,000

In a slab by PCGS as MS64.

Ex Noble Numismatics Sale 83 (lot 1409 part of set of four) and Sale 110 (lot 1196).



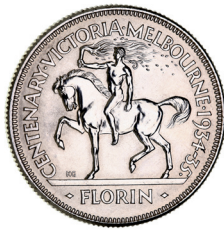
1019*

George V, Melbourne Mint 1934-35 proof Melbourne Centenary florin. *Obverse and reverse with some toning.*

\$5,000

Slabbed by NGC as PF62.

Finest Struck Melbourne Centenary Florin



1020*

George V, Melbourne Mint, 1934-35 Melbourne Centenary florin specimen strike with fully detailed wreath on rider and nipple on his left breast. Minute rim nick at 9 on reverse, contact hairline in front of king's chest otherwise perfect FDC and very rare.

\$5,000

Private purchase from Klaus Ford with his holder and tag.

Finest Known Proof Sixpence



1021*

George V, Melbourne mint proof or specimen sixpence, 1936. FDC and extremely rare.

\$8,000

In a slab by PCGS as PR67+, ex Roxbury Sale (lot 1631).



1022*

George VI, Bombay Mint proof restrike halfpenny, 1943 I. Full mint red, minimal spotting to the mint's lacquer surface seal, nearly FDC and very rare.

\$3,640

Private purchase from M. R. Roberts with their ticket.



1023*

George VI, Perth Mint proof halfpenny, 1947. Brilliant brown patina, nearly FDC and very rare.

\$4,550

In a slab by PCGS as PR62BN.

1024

Elizabeth II, Melbourne Mint proof set, 1955. In lucite case, FDC, the penny brilliant red. (4)

\$700

1025

Elizabeth II, Melbourne mint proof set, 1956. Nearly FDC - FDC. (5)

\$500



1026*

Elizabeth II, Melbourne mint proof penny, 1956. Full mint red, nearly FDC.

\$660

Private purchase from R.C.C with their tag, 29.5.12.

1027

Elizabeth II, Melbourne mint proof silver set, 1958; Perth Mint proof penny 1958. Nearly FDC - FDC. (5)

\$600

1028

Elizabeth II, Melbourne mint proofs, florin 1961, shillings 1958, 1960, 1961; Perth mint proof pennies, 1958, 1962, halfpenny 1962, all in 2x2 holders. Bronze with toning otherwise nearly FDC - FDC. (8)

\$400

1029

Elizabeth II, Melbourne Mint proof set, 1962. *In black plastic case of issue, FDC.*

\$150

1030

Elizabeth II, Melbourne mint proof sets, 1955 - 1963, complete (40); Perth mint proof sets 1957 - 1963 (brilliant finish) (11), all in plastic 2x2 holders, all with backing sheets printed description and mintage figures. *Mostly FDC, 1959 halfpenny and penny toned, 1959 Perth penny toned (with M.R. Roberts tag).* (51)

\$5,000



1031*

Elizabeth II, Perth mint proof set, 1955. *The halfpenny dull toned, penny brilliant, FDC and rare.* (2)

\$3,000



1032*

Elizabeth II, Perth Mint proof penny, 1956. *Brown and red tone, nearly FDC and scarce.*

\$1,820

In a slab by PCGS as PR63RB.



1033*

Elizabeth II, Perth mint proof penny, 1956. *Toned uneven on reverse under kangaroo's head, otherwise red FDC and rare.*

\$1,500



1034*

Elizabeth II, Perth mint proof penny, 1957. *FDC.*

\$600

In a slab by NGC as PF66RD. Private purchase from M.R. Roberts with their tag.



1035*

Elizabeth II, Perth mint proof penny, 1957. *Matte fields finish, obverse carbon spots otherwise nearly FDC.*

\$200

1036

Elizabeth II, Perth Mint proof penny, 1957; Melbourne Mint proof penny 1958. *Nearly FDC - FDC.* (2)

\$400



1037*

Elizabeth II, Perth mint proof pennies, 1959 and 1963. *Minimal spotting, full red, nearly FDC.* (2)

\$500

1038

Elizabeth II, Perth Mint proof set, 1960. *FDC.* (2)

\$250

YEAR SETS



1039*
Edward VII, florin, shilling, sixpence and threepence, 1910, a well matched set of our first issue. *Nearly uncirculated*. (4)
\$1,750

CROWNS



1040*
George VI, 1937 and 1938. *Uncirculated; dull toned, good extremely fine*. (2)

\$250



1041*
George VI, 1938. *Good extremely fine*.

\$250

1042
George VI, 1938. *Obverse surface marks otherwise extremely fine/good extremely fine*.

\$100

FLORINS



1043*
Edward VII, 1910. *Patchily toned reverse, full mint bloom, uncirculated*.

\$1,250

Private purchase from R.C.C. with their tag, 29.5.12.

One of the Finest Known 1915 Florin Rarities



1044*
George V, 1915. *Attractive grey and olive toning over subdued original mint bloom, choice uncirculated*.

\$13,500

In a slab by PCGS as MS64, only one coin graded higher.



1045*

George V, 1916M. *Light golden tones, choice uncirculated or virtually FDC.*

\$2,000

Private purchase from Klaus Ford with his holder.



1049*

George V, 1925. *Choice uncirculated.*

\$1,500

Private purchase from Klaus Ford with his holder.



1046*

George V, 1918M. *Full original carthweeling mint bloom, choice uncirculated.*

\$800

Private purchase from R.C.C. with their tag, 29.5.12.



1050*

George V, 1926. *Full original mint bloom, light grey toning, minimal contact marks, choice uncirculated.*

\$6,000

In a slab by PCGS as MS64, only three coins graded higher.



1047*

George V, 1921. *Choice uncirculated.*

\$3,500

Private purchase from Klaus Ford with his holder.



1051*

George V, 1927 Canberra. *Uncirculated/choice uncirculated.*

\$100

In slab by PCGS as MS63.

1048

Edward VII - Elizabeth II, 1910-1963, missing 1932 and 1934-35, otherwise complete. *Fair - nearly uncirculated.* (57)

\$450

Ex Barry McGown Scott Collection.



1052*

George V, 1931. *Subdued tone, uncirculated.*

\$200



1057*

George V, 1936. *Subdued mint bloom, uncirculated.*

\$150



1053*

George V, 1934. *Specimen-like, uncirculated.*

\$500



1058*

George VI, 1939. *Surface marks, otherwise good extremely fine.*

\$200



1054*

George V, 1934-35 Melbourne Centenary. *Choice uncirculated.*

\$500

In a slab by PCGS as MS65.

SHILLINGS

Gem Mint State First Year of Type



1055*

George V, 1934-35, Melbourne Centenary. *Sharp wreath on rider, nearly uncirculated.*

\$350



1059*

George V, 1911. *Attractive iridescent mint bloom, fully sealed gem uncirculated and rare in this condition, one of the finest known.*

\$9,000

In a slab by PCGS as MS65.

Ex Benchmark Collection (lot 272).



1056*

George V, 1935. *Uncirculated.*

\$420

In a slab by PCGS as MS63.

Benchmark Collection 1913 Rarity



1060*

George V, 1913. Fully sealed grey toned original mint bloom, choice uncirculated and very rare in this condition, one of the finest known.

\$10,000

In a slab by PCGS as MS65, only one coin graded higher.

Ex Benchmark Collection (lot 274).

Choice Mint State 1920M Shilling



1062*

George V, 1920M. Full original satin-like mint bloom, minimal contact marks, choice uncirculated and rare in this condition.

\$10,000

In a slab PCGS as MS65, only two coins graded higher.



1063*

George V, 1922. Frosty original mint bloom, well struck for this, lightly toned, uncirculated and rare thus.

\$2,000

In a slab by PCGS as MS64.

A Gem Mint State 1916M Shilling



1061*

George V, 1916M. Full original frosty mint bloom, unmarked with die striations clear, most attractive toning, one of the finest known, gem uncirculated.

\$6,000

In a slab by PCGS as MS66, only one graded higher.

Choice Mint State 1924 Shilling



1064*

George V, 1924. Subdued mint bloom with light grey gold tones all over. Clear 4 over 2 (or 3) with detailed die striations, choice uncirculated and one of the finest known.

\$10,000

In a slab by PCGS MS65, only one coin graded higher.

Gem Mint State Shilling 1936



1065*

George V, 1936. Full original satin-like mint bloom, virtually unmarked gem uncirculated, one of the finest known.

\$5,000

In a slab by PCGS as MS66, only one coin graded higher.



1066*

George VI, 1938. Full subdued original frosty mint bloom, gem uncirculated.

\$1,250

In a slab by PCGS as MS66, only two coins graded higher.



1067*

George VI, 1942S. Peripheral toning both sides, choice uncirculated.

\$1,000

In a slab by PCGS as MS66+.



1068*

George VI, 1948. Full subdued frosty mint bloom, choice uncirculated.

\$1,000

In a slab by PCGS as MS65, only one ciub graded higher.

SIXPENCES

Choice Mint State 1920M Sixpence



1069

George V, 1920M. Sharply struck, attractive iridescent toning, choice uncirculated and rare in this condition, one of the finest known.

\$7,500

In a slab by PCGS as MS65.



1070*

George V, 1921. Deep blue grey patina, choice uncirculated, one of the finest known.

\$2,500

In a slab by PCGS as MS65.

Ex Benchmark Collection (lot 231).

Choice Mint State 1923 Sixpence



1071*

George V, 1923. 'Orange Peel' obverse fields, fully sealed mint bloom, choice uncirculated and rare in this condition, one of the finest known.

\$6,500

Ex Benchmark Collection (lot 233).

In a slab by PCGS as MS65, only two coins graded higher.

Benchmark Collection 1935 Sixpence



1073*

George V, 1935. Full original mint boom, carbon spotting on reverse, unmarked gem uncirculated and rare, one of the finest known.

\$6,500

In a slab as MS66, only one coin half a grade finer known.

Ex Benchmark Collection (lot 241).

Gem Mint State 1924 Sixpence



1072*

George V, 1924. Even grey patina, full sealed original mint bloom surface, choice uncirculated and rare in this condition, one of the finest known.

\$7,500

In a slab by PCGS as MS65, only two coins graded higher.

Ex Benchmark Collection (lot 234).



1074*

George VI, 1945. Full original satin-like mint bloom, gem uncirculated.

\$1,000

In a slab by PCGS as MS66, only one coin half a grade higher.



1075*

Elizabeth II, 1953. Full original frosty cartwheeling mint bloom, diagnostic die break rim to emu, virtually unmarked, gem uncirculated, one of the finest known.

\$2,000

In a slab by PCGS as MS66, only one coin grades higher.



1078*

George VI, 1942. Well struck for this, fully sealed mint bloom, choice uncirculated and rare in this condition, one of the finest known.

\$9,000

In a slab by PCGS as MS64.

Ex Benchmark Collection (lot 195).



Part

1076*

Edward VII - Elizabeth II, 1910 - 1955, each in 2x2 holder, better than average set, on two pages. Very fine - uncirculated. (40)

\$250



Part

1079*

Edward VII - Elizabeth II, 1910 - 1964, each in 2x2 holder, complete except for overdate, well above average set on three pages. Very fine - uncirculated. (40)

\$350

THREEPENCES



1077*

Edward VII, 1910. Full mint bloom, choice uncirculated.

\$150

Private purchase from Klaus Ford with his holder.

PENNIES



1080*

George V, 1913. Brown and red, nearly uncirculated.

\$250



1081*

George V, 1915. *Brown with red, uncirculated.*

\$750

Private purchase from R.C.C. with their tag, 29.5.12.



1082*

George V, 1917. *Brown with red, nearly uncirculated.*

\$500

Private purchase from R.C.C. with their tag, 29.5.12.



1083*

George V, 1920 Indian die, dot below lower scroll. *Matte red brown patina, uncirculated.*

\$800

Private purchase from R.C.C. with their tag, 29.5.12.



1084*

George V, 1920 dot above lower scroll, Indian die. *Nearly full original mint red, choice uncirculated and rare in this condition, one of the finest known.*

\$5,000

In a slab by PCGS as MS65RB, only two coins grade higher.

Ex Benchmark Collection (lot 82).



1085*

George V, 1920 dot below lower scroll, Indian die. *Attractive red brown mint bloom, uncirculated.*

\$3,000

In a slab by PCGS as MS64RB.

Ex Benchmark Collection (lot 78).



1086*

George V, 1923, London die. *Fully sealed red brown mint bloom, choice uncirculated, one of the finest known.*

\$1,000

Private purchase from R.C.C. with their tag, 29.5.12.

Condition Census Fenton Collection 1925 Penny



1087*

George V, 1925, London die. *Nearly uncirculated and very rare in this condition.*

\$10,000

In a slab by PCGS as MS64BN.

Ex George Fenton Collection, Noble Numismatics Sale 112 (lot 3237)



1088*

George V, 1925 London die. *Q die state, very fine/good very fine.*

\$100

In a slab by PCGS as XF40.

1089

George V, 1927. *Streaky mint red patina, uncirculated.*

\$220

Ex Klaus Ford with his holder.

Very Fine 1930 Penny



1090*

George V, 1930, Indian die. *Even brown patina, six pearls, part centre diamond, very fine or better and very rare in this condition.*

\$18,000

Sold with a letter of authenticity from the Royal Australian Mint 22 February 1978 signed by J.B. Joslin.



1091*

George V, 1930, Indian die. *Dark brown broken patina, very good/fine and rare.*

\$12,000

Sold with RAM letter of authenticity 16/4/86 plus black and white photos.



1092*

George V, 1931, dropped 1, Indian die. *Full centre diamond, and band to crown, seventh and eighth pearls fused, even brown patina, good very fine and very rare, one of the finest known.*

\$2,500



1093*

George VI, 1950. *Full brilliant mint red, gem uncirculated.*

\$1,000

In a slab by PCGS as MS65RD.





Part

1094*

George V - Elizabeth II, 1911-1964, missing, 1930 penny, each in 2x2 holder on four album pages, 1911, 1915H, 1916I, 1924 & 1925 (illustrated), 1944 replaced by 1944Y, extra 1943Y (2), better than average set. *The 1925 broken N die state, very fine - uncirculated.* (76)

\$750

HALFPENNIES



1095*

George V, 1914. *Red with brown, dull obverse, uncirculated.*

\$750

Private purchase from R.C.C. with their tag, 29.5.12.



1096*

George V, 1923. *Diagnostic peripheral die break either side, medium brown patina, good very fine.*

\$1,500

Private purchase from Klaus Ford with his holder.



1097*

George V, 1923. *Nearly very fine.*

\$750



1098*

George V, 1943 I. *Subdued bloom, nearly full mint red. Uncirculated.*

\$50



1099*

George V, 1951 PL. *Full original mint red, part peripheral die break along Australia, gem uncirculated.*

\$1,000

In a slab by PCGS as MS66RD.