

THE VERENE COLLECTION



George IV 1820 - 1830



2501

Coronation of George IV, 1821, medal in silver (35mm) by B.Pistrucci BHM 1070; Eimer 1146a) 17.67g with case of issue. *Attractive iridescent tone, brilliant FDC.*

\$450

The official Royal Mint issue.



2502

Coronation of George IV, medal in bronzed copper (35mm) by B.Pistrucci BHM 1070; Eimer 1146a) 22.37g with case of issue. *Attractive red chocolate brown obverse brilliant, FDC.*

\$250

1826 PROOF SET – NEW BARE HEAD COINAGE ISSUE

The new Wyon obverse of George IV, modelled from Chantrey's bust of the monarch, was the driver for the issue of a proof set in 1826. The new sympathetic effigy did away with the laurel wreath on the obverse bust of all the silver and gold coins but strangely not the humble coppers. The 11-coin set ranged from a pattern gold five pound through to the copper farthing. Maundy coins were not included as they retained the Pistrucci laureate obverse. This proof set is unlike future Mint issues, e.g., those dated 1831, 1839, 1887 in those regular strikes of several the coins (Sovereign, ½ crown, 1/-, 1d and 1/2d) were already available to the general public.

Despite the long history of the Royal Mint producing special strikes, even as recently as the 1821 Coronation, 1826 was the first time that a complete set of proof coins was offered to the public. Mint Master Thomas Wallace (later Baron), who had taken over from William Wellesley Pole, authorised their issue. An intriguing fact discovered by Graham Dyer was that the Mint Master also made it his business to vet all applications for the sets personally. This politician had the time and inclination to assure himself that the applicants were fit and proper collectors engaged in the science of numismatics and not dealers or accumulators and hoarders is a charming anecdote. Mint records reveal that the sets sold for £9.0.6 and that collectors paid face value for the gold and silver pieces, but the humble margins on the three copper pieces required a 6d charge per coin in consideration of their being bronzed. The Moneyers manufactured the sets at Tower Hill, with each coin individually struck (medal fashion) using die or medal presses.

The Moneyers delivered around 400 sets over 14 months. The first batch of 74 sets in April 1826 to meet initial orders, followed by three separate issues at the end of the year, presumably in time for Christmas. Set production concluded with around half of the total issue delivered in June 1827.

The staggered delivery of the coins implies the coins were struck in several campaigns opening up the opportunity for numismatic varieties. This staggered delivery was typical for all the proofs sets in this catalogue. Furthermore, the dies were likely taken from the presses and stored between production runs. This hiatus created numismatic research opportunities, e.g., replacing or improving the dies and increasing prospects for unrecorded varieties.

The number of bronzed proofs (1826, 1831 & 1839) turning up for sale in the open market over the last ten years is much higher than the silver and gold pieces. The three saltire varieties of the penny and the two of the halfpenny (found on regular 1826 strikes) are also found in bronzed proof and included here. Peck concluded that they must have been available separately from the sets. It is speculative, but this suggests that collectors of more humble means were also catered for under separate arrangements with the engraver and/or Moneyers.

OBVERSE DESCRIPTIONS: Design by William Wyon from a sculptured bust by Sir Francis Chantrey. The gold and silver coins have a common obverse comprising: - Left facing (Sinister) undraped bust of King George the Fourth with an elaborately curled wig. The above shoulder truncation is bare, and underneath is the date 1826 flanked by decorative (comprising an oval surrounded by six beads to form a floret) stops. Effigy surrounded by the legend GEORGIUS IV DEI GRATIA "George the fourth by the grace of God" a denticular border and a narrow-raised rim surround the coin. All parts of the design in relief exhibit delicate frosting over mirrored fields. The copper (bronzed) coins have a common obverse by W. Wyon as above, comprising: - Left facing (Sinister) bare bust of King George the Fourth with elaborately curled wig fitted with a laurel wreath tied with a looped ribbon, one end of which is loose and dangles below the ear. The above shoulder truncation is bare, and underneath is the date 1826 flanked by decorative stops as per the precious metal coins above. The effigy is surrounded by the legend GEORGIUS IV DEI GRATIA "George the fourth by the grace of God" a long denticular border, and a wide flat raised rim to surround the coin. Possibly due to the bronzing, the relief design exhibits delicate frosting; however, the fields are mirror finished. There are slight variations in the detail of the hair, wreath (number of berries) and tie ribbon between the three denominations.



2503

1826 Proof Set Case - New Bare Head Coinage Issue, George IV, 1820-30. 1826, S-PS1 New Issue Five Sovereigns to Farthing (11 coins). Contemporary extremely rare red leather double-sided oval display case fitted with brass swing hooks. This case includes an original protective ground glass window and a removable red velvet roundel tray with a white silk lining. The roundel pattern is oval, with the minor coins positioned left progressing to the largest on the right side of the tray. The two lids enable both sides of the coins to be viewed. The case reveals minor repairs, and the wooden frame is slightly distorted, as is typical for this type of wooden framed case. Mintage estimated at 414 sets struck. The number of individual low denomination silver and copper proof coins privately struck is more significant but remains unknown. The coins present with an inverted reverse (6h dies in coin orientation) unless otherwise described. *Fine and very rare.*

\$1,000

Ex Status Oct 2013 (Sale 301, lot 7401).



2504

1826 Proof Set Case, Contemporary maroon leather rectangular presentation case with brass swing hooks. The Interior comprises red velvet roundels in a 3-5-3 pattern and red ribbon coin lifters, and plain white silk lining to the lid. *Very fine.*

\$500



2505

1826 Proof Five Sovereigns, George IV, 1820-30. S-3797, L&S 27, W&R 213 (R3) 39.91g. Edge inscription DECUS ET TUTAMEN ANNO SEPTIMO "an ornament and a safeguard seventh regnal year" in small raised (in relief) lettering.

Reverse - Shield bearing G IV royal arms within an ornately edged ermine mantle drawn at the top corners by tasselled cords and surmounted by a stylized St Edwards Crown. The design is surrounded by the Latin legend BRITTANARIUM REX FID:ei DEF:ensor "King of the Britain's defender of the faith". A denticular border and a narrow-raised rim surround the coin. All parts of the design in relief exhibit delicate frosting over mirrored fields. *Deep cameo proof with planchet and die polishing striations in the fields only, minor hairlines near G of Gratia and in front of King's nose, otherwise nearly FDC and rare.*

\$60,000

GIV as king his arms were those of his two kingdoms, the United Kingdom and Hanover, superimposed: Quarterly, I and IV three lions passant guardant (for England); II a lion rampant within a double tressure flory-counter-flory (for Scotland); III a harp stringed (for Ireland); overall an escutcheon tierced in pall reversed (for Hanover), I two lions passant guardant (for Brunswick), II a semee of hearts a lion rampant (for Lüneburg), III a horse courant (for Westphalia), overall an inescutcheon charged with the crown of Charlemagne, the whole escutcheon surmounted by a crown.



2506

1826 Proof Two Sovereigns, George IV, 1820-30. S-3799, W&R 228 (R2) 15.95g. Edge inscribed as per the five sovereign Reverse - Shield incorporating Ensigns' armorial surrounded by more restrained Baroque decoration and surmounted by the St Edwards crown. The legend, border, rim and frosting are as per the five sovereign coin. *Planchet and die polishing striations in the field only, minor hairlines on the obverse, possibly has been wiped on the portrait, otherwise nearly FDC and rare.*

\$12,500



2507

1826 Proof One Sovereign, George IV, 1820-30. S-3801, W&R 237 (R2) 8.01g. Reverse - Shield incorporating Ensigns' armorial surrounded by more restrained Baroque decoration and surmounted by the St Edwards crown. The legend, border, rim and frosting are as per the 5 and 2 sovereign coins. *Obverse hairlines, brilliant, nearly FDC and rare.*

\$8,000



2508

1826 Proof One Sovereign - legend variety, George IV, 1820-30. S-3801 W&R 237-not listed (R?) 7.98g. Obverse- missing left serif to R in GEORGIUS Reverse - Shield incorporating Ensigns' armorial surrounded by more restrained Baroque decoration and surmounted by the St Edwards crown. The legend, border, rim and frosting are as per the 5 and 2 sovereign coins. *A gem original proof attractive orange yellow without any noticeable contact marks, FDC and extremely rare.*

\$15,000



2509

1826 Proof Half Sovereign, George IV, 1820-30. S-3804A, W&R 249? (R?) 4.02g. straight-grained edge with a wider rim Obverse - extra tuft of hair. Reverse - as for one sovereign in reduced scale. *Surface contact marks, otherwise brilliant nearly FDC and rare.*

\$5,000



2510

1826 Proof Half Sovereign, George IV, 1820-30. S-3804, W&R 249 (R2) 3.98g straight-grained edge with a narrow rim. Both obverse dies identical to those used to strike the sixpence. Obverse - single tuft. Reverse - as for one sovereign in reduced scale. *Choice original proof with attractive orange yellow, nearly without contact marks, FDC and very rare.*

\$8,000



2511

1826 Proof Crown, George IV, 1820-30. S-3806; ESC-2336; L&S 28; Davies-151. (R) 28.16g. Lettered edge inscribed as per the five sovereigns. Reverse - Design by Jean B. Merlen. Crowned King's shield is bearing royal arms. Above this is an ornate armet with a barred full-face helmet and elaborate foliate lambrequins cascading down the shield's sides. The St Edwards crown surmounts the whole design. Underneath the shield is a textured scroll with the French inscription DIEU ET MON DROIT "God and my right"; the scroll terminates in divided foliate decorations balancing the decoration of the shield above. The Latin legend surrounds the whole design as per the five sovereign. A denticular border and a narrow-raised rim surround the coin. All parts of the design in relief exhibit delicate frosting over mirrored fields. *Contact marks under DEF, attractive blue iridescent toning, FDC/nearly FDC.*

\$25,000

Ex Status Sale 301 (lot 7400).



2512

1826 Proof Half Crown, George IV, 1820-30. S-3809, ESC-2376, Davies-192. (S) 14.14g straight-grained edge. Reverse - as for crown in reduced scale. *Attractive blue grey toning, FDC and rare.*

\$4,000

Ex Status Sale 301 (lot 7399).



2513

1826 Proof Shilling, George IV, 1820-30. S-3812, ESC-2411, Davies-232. (S) 5.62g straight-grained edge. Obverse - features a raised irregular line on the back of the King's neck below hair and extending to truncation. Reverse - Design by Jean B. Merlen. Depicts the royal crest, i.e. crowned British Lion statant guardant standing on St Edwards crown. Below is a united sprig of rose, thistle and shamrock - floral emblems for England, Scotland and Ireland. The legend in full reads BRITANNIARUM REX FIDEI DEFENSOR. A denticular border and a narrow-raised rim surround the coin. All parts of the design in relief exhibit delicate frosting over mirrored fields. *Blue grey iridescent toning over brilliant fields, unmarked FDC and rare.*

\$2,000

Ex Noble Numismatics Sale 101 (lot 2098) F.S. Dobbin Collection; Sale 59 (lot 880), Spink Sale 59 (lot 1651) Norweb Collection.



2514

1826 Proof Shilling, George IV, 1820-30. S-3812, ESC-2411, Davies-232. (R2) 5.61g straight-grained edge. Obverse - the scarcer variety without the raised line approximately 1 in 4 proof shillings present in this form and is likely an earlier strike. Reverse - Design by Jean B. Merlen. Depicts the royal crest, i.e. crowned British Lion statant guardant standing on St Edwards crown. Below is a united sprig of rose, thistle and shamrock - floral emblems for England, Scotland and Ireland. The legend in full reads BRITANNIARUM REX FIDEI DEFENSOR. A denticular border and a narrow-raised rim surround the coin. All parts of the design in relief exhibit delicate frosting over mirrored fields. *Attractive blue and grey toning over brilliant fields, FDC and very rare.*

\$2,500



2515

1826 Proof sixpence, George IV, 1820-30. S-3815, ESC-2434, Davies-270. (S) 2.82g. straight-grained edge with a broader rim. Obverse - king as an extra tuft of hair on the face side of the ear, the left side of the R in GRATIA points to a gap between denticles on the rim. Reverse - as for shilling in reduced scale. Both coins are affectionately known as the lion shilling and sixpence. The design was well regarded, and updated versions appeared in issues for Edw.VII and G.V-VI. Both obverse dies are identical to those used to strike the half sovereign. *Dark blue grey toned brilliant proof, minor obverse spotting, otherwise FDC and rare.*

\$2,000



2516

1826 Proof Sixpence, George IV, 1820-30. S-3815, ESC-2435, Davies-271. (R2)2.83g. straight-grained edge with a narrow rim. Obverse - single tuft of hair on the face side of the ear (approximately 1 in 3 sixpences present in this single tuft version); the left side of the R in GRATIA points to a denticle on the rim. Reverse - as for shilling in reduced scale. Both coins are affectionately known as the lion shilling and sixpence. The design was well regarded, and updated versions appeared in issues for Edw.VII and G.V-VI. *Light blue grey 'milky' tone on brilliant surface, unmarked FDC and very rare.*

\$2,500



2517

1826 Regular Maundy Set with Case, The Maundy is included to provide a complete inventory of the coins issued in 1826. George IV, 1820-30. S-3816; ESC-2450; Davies-284. Fourpence to Penny Silver (4 coins) with a contemporary case. Obverse - Laureate bust, design by Pistrucci; Reverse - design by Jean B. Merlen. Date split by St Edwards Crowned Arabic numeral (denoting value) surrounded by an oak wreath. 4d 1.88g, 3d 1.41g, 2d 0.94g - has T over B in BRITANNIAR (ESC-2451 R3) and 1d 0.46g. *Nearly uncirculated with mixed toning.* (4)

\$400



2518

1826 Regular Maundy Set, George IV, 1820-30. S-3816; ESC-2450; Davies-284. Fourpence to Penny Silver (4 coins). Obverse - Laureate bust- design by Pistrucci; Reverse - Date split by St Edwards Crowned Arabic numeral (denoting value) surrounded by an oak wreath, design by Jean B. Merlen. 4d, 3d, 2d has T over B in BRITANNIAR (ESC-2451 R3) and 1d. The owner has not observed an 1826 maundy 2d without the overstruck B. *Nearly uncirculated.* (4)

\$350

1826 Proof Bronzed Coins all have a plain edge
and present with an aligned reverse (dies in medal orientation).



2519

1826 Proof Penny, George IV, 1820-30. S-3823, Peck 1423 (S). 18.77g. plain arms on the saltire. Reverse - Abbreviated legend BRITANNIA: REX FID: DEF:ensor. Dexter facing Britannia holding an ornamented trident in her left hand. She is seated on a plinth, which forms an exergue. Her right-hand steadies a shield emblazoned with the Union flag and is partially covered by her tunic. The flag of Scotland - St Andrews cross or Saltire i.e. the X shaped cross on the shield, has three different cross versions (see lots 2520, 1 below). The cross can be bare or with either a thin or thick raised line. Her clothing is in the classic style from sandaled feet, flowing tunic and armoured decoration across the breast, which terminates in a lion's head. She is wearing a plumed Corinthian helmet. Below the exergue are the three floral symbols as in the shilling. However, the posy is treated more economically with a thinner rendition. A denticular border and a wide, flat, raised rim surround the coin. The relief design rarely exhibits any frosting; however, the fields are mirror finished. *Minor obverse rim bruise at 9 o'clock, slight spotting, nearly FDC and scarce.*

\$1,000



2520

1826 Proof Penny, George IV, 1820-30. S-3823, Peck 1423 (S). 18.88g. plain arms on the saltire. *Full dark chocolate bronzed surface with hints of red in the floral arrangement below Britannia, FDC and scarce.*

\$1,250



2521

1826 Proof Penny, George IV, 1820-30. S-3823, Peck 1426 (R). 18.57g, thin line in relief on arms of the saltire. *Bluish tinges to full chocolate bronzed patina, slight spotting on the reverse, otherwise FDC and rare.*

\$1,500



2522

1826 Proof Penny, George IV, 1820-30. S-3823, Peck 1428 (R). 19.40g, thick line in relief on arms of the saltire. *Faint obverse spotting, attractive chocolate brilliance, FDC and rare.*

\$1,500



2523

1826 Proof Halfpenny, George IV, 1820-30. S-3824, Peck 1434 (VS). 9.21g. two incuse lines on arms of the saltire. Reverse - Similar to the penny in reduced scale. Longer stems to floral emblems and full straps to sandal. Saltire on shield occurs in two varieties the cross can have two fine incuse lines near the edges or one raised thick line biased to one side (see lot 2525 below). *Slight spotting, otherwise FDC and very scarce.*

\$800



2524

1826 Proof Halfpenny, George IV, 1820-30, S-3824, Peck 1436 (R), 9.41g. Bronzed Proof with two incuse lines on saltire. *Attractive chocolate brown, FDC and rare.*

\$1,000



2525

1826 Proof Halfpenny, George IV, 1820-30. S-3824, Peck 1437 (VS). 9.58g, single thick line in relief on arms of the saltire. *Chocolate brown patina, FDC and very scarce.*

\$900



2526

1826 Proof Farthing, George IV, 1820-30. S-3825, Peck 1440 (S). 4.76g. a single central incuse line down the cross (making three incuse lines) on the saltire. Reverse - Similar to the Halfpenny in reduced scale. Different trident ornamentation where the shaft connects to prongs Longer plume to the helmet. Only one variety for the saltire with a narrow incuse line down the centre of each arm of the cross. *Slight spotting, otherwise FDC and scarce.*

\$700



2527

1826 Proof Farthing, George IV, 1820-30. S-3825, Peck 1440 (S). 4.72g, single central incuse line down the arms (making three incuse lines) on the saltire. *Spotting over deep chocolate patina, otherwise FDC and rare.*

\$900



2528

1826 Proof Penny, George IV, 1820-30. S-3823, Peck 1424 (R). 18.87g. Copper Proof with plain arms on the saltire. *Attractive light red and brown with blue iridescence, softer strike on devices, closer to currency strike, FDC and rare.*

\$1,000

Ex C.W. Peck Collection.



2529

1826 Proof Halfpenny, George IV, 1820-30. S-3824, Peck 1435 (V.R.). 9.31g. Copper Proof with two incuse lines on arms of the saltire. *Sharp strike, most attractive red and blue brown brilliance, FDC and very rare.*

\$1,250

Ex C.W. Peck Collection.



2530

1826 Proof Farthing, George IV, 1820-30. S-3825, Peck 1441 (R). 4.65g. Copper Proof with single central incuse line down the arms (making three incuse lines) on the saltire. *Deep strike, attractive tone, slight red on reverse, FDC and rare.*

\$1,250

Ex C.W. Peck Collection.



William IV 1830-1837



2531

Coronation of William IV, 1831, medal in silver (33mm) 17.53g by W. Wyon, C on truncation for F. Chantrey (BHM 1475, Eimer 1251). *Attractive light tone, FDC.*

\$400

The official Royal Mint issue.



2532

Coronation of William IV, 1831, in copper (33mm) 18.94g by W. Wyon, C on truncation for F. Chantrey (BHM 1475; Eimer 1251) with case of issue. *Attractive medium chocolate brown patina, nearly FDC.*

\$200

1831 CORONATION PROOF SET

The proof coins present with an inverted reverse (dies in coin orientation) and plain edge unless otherwise described. All coins have their rims finished with a delicate denticle pattern. Most 1831 proofs reveal evidence of minor die rotation between strikes, and this is seen as ghosting and clipped characters. Ghosting is most readily observed in the legends as misplaced faint broad lettering where the second strike has not entirely obliterated characters created in the first blow of the dies. The hand press used to strike the proofs did not always align the dies, and many orientations apart from medal and coin are found for proof coins in this series.

OBVERSE DESCRIPTIONS: The gold and silver coins have a common obverse comprising: - a right-facing (Dexter) bare bust of King William the Fourth with elaborately curled hair which varies slightly between the various denominations. The effigy is truncated at the neck with 1831 below and surrounded by the legend GULIELMUS IIII D:G: BRITANNIAR: R.E.X. F:D: "William the fourth by the grace of God King of the Britain's defender of the faith" a denticular border and a raised rim with part wire edge surround the coin. All parts of the design in relief exhibit delicate frosting over mirrored fields. The copper (bronzed) coins have a common obverse comprising: - essentially the same effigy and date position as the precious metal coins above but with a different legend. The effigy is surrounded by the legend GULIELMUS IIII DEI GRATIA "William the fourth by the grace of God" a denticular border and a raised rim with part wire edge surround the coin. Possibly due to the bronzing, the relief design exhibits delicate frosting; however, the fields are mirror finished. There are slight variations in the detail of the hair, wreath (number of berries) and tie ribbon between the three denominations.

The letters W W for William Wyon appear on the truncation of most denominations except the small silver and the bronzed penny. The arrangement of punctuation around the letters also varies and is listed for each coin type here. Jean B. Merlen designed the reverses of the gold and silver coins but did not have his initials struck into them.



2533

1831 Proof Set Case, William IV, 1830-37. 1831, S-PS2 Coronation, Two Sovereigns to Farthing (14 coins). The coins are all struck in coin alignment unless otherwise noted. With contemporary rare maroon leather covered timber presentation case fitted with brass swivel hooks. Round corners with blue velvet roundels in a 3-4-4-3 pattern with blue ribbon lifters and white silk lining to the lid. Mintage unknown but estimated at 150 -200 sets struck. The number of privately struck individual low denomination silver and copper proof coins is more significant and unknown. *Very fine.*

\$1,000



2534

1831 Proof Set Case, William IV, 1830-37. Contemporary short set case (gold and silver coins only) very rare maroon leather covered timber presentation case fitted with brass swivel hooks. Rectangular with round corners, blue velvet roundels in 3-4-4 pattern with blue ribbon lifters and white silk lining to the lid. *Nearly very fine.*

\$900



2535

1831 Proof Two Sovereigns, William IV, 1830-37. S-3828, W&R 258 (R3) 15.68g. Reverse - Ensigns' armorial (shield bearing W IV royal arms#) within an ornately edged ermine mantle drawn at the top corners by tasselled cords and surmounted by a stylised St Edwards Crown. The shield's base reveals it sits on a mostly obscured ornate chain from which hangs sinister St George and the dragon between ANNO 1831 "year 1831". A denticular border and a narrow raised rim surround the coin, typically with part wire at the edge. All parts of the design in relief exhibit delicate frosting over mirrored fields. Both sides reveal slight ghosting in accord with being hand struck by the moneyers using multiple strikes with the dies to bring up the design. *Hairlines in field and slight contact marks, minute rim nicks, otherwise nearly FDC and very rare.*

\$25,000



2536

1831 Proof One Sovereign, William IV, 1830-37. S-3829B, W&R 261 (R3) 7.75g. Reverse - Shield incorporating Ensigns' armorial surrounded by more restrained Baroque decoration (garnish) and surmounted by the St Edwards crown. *The legend, border, rim and frosting are as above, full cameo proof with slight hairlines and minute rim marks, nearly FDC and very rare.*

\$10,000



2537

1831 Proof Half Sovereign, William IV, 1830-37. S-3830, W&R 267 (R3) 3.97g. Obverse - the legend reveals a misplaced double entry for the first I in IIII. This flaw is also observed in the Maundy 4d obverse, confirming a die linkage (same master tool) between the two coins. Reverse - as for one sovereign in reduced scale. *Only one or two hairlines, full cameo proof FDC and very rare.*

\$8,000



2538

1831 Pattern Crown, William IV, 1830-37. S-3833, ESC-2460, L&S 3. (R4) Davies-301. 27.94g. reverse struck en medaille. Obverse - standard design except for engravers surname W. WYON. in relief on truncation. Reverse - Similar to the two sovereigns but with less ornamentation, comprising a square crowned shield of the Royal arms on an ermine mantel. This mantle is tied with tasselled cords on each corner. Beneath this is the collar and badge of the order of the garter. The date ANNO 1831 is separated at the base by St George. *Full attractive light grey toning, brilliant unmarked plain edge proof FDC and extremely rare, one of the finest known.*

\$80,000



2539

1831 Proof Crown, William IV, 1830-37. S-3833, ESC-2462, L&S 1. (R2) Davies-300. 27.83g. incuse W. W. on truncation (coin die axis). Reverse - Similar to the two sovereigns but with less ornamentation, comprising a square crowned shield of the Royal arms on an ermine mantel. This mantle is tied with tasselled cords on each corner. Beneath this is the collar and badge of the order of the garter. The date ANNO 1831 is separated at the base by St George. *Dark grey and iridescent tone, minor hairlines, die rust on neck, nearly FDC and very rare.*

\$30,000



2540

1831 Proof Halfcrown, William IV, 1830-37. S-3834A; ESC-2473; Davies-320. 13.47g. incuse W W (in block font) on truncation. Reverse - a miniature version of the crown design excepting the collar of the garter is mainly obscured by the royal arms. *Striation lines in obverse field, iridescent toning, cameo proof, nearly FDC and rare.*

\$5,000

Ex Noble Numismatics Sale 104 (lot 2455) P. Connolly Collection.



2541

1831 Proof Halfcrown, William IV, 1830-37. S-3834A; ESC-2473; Davies-320. 13.95g. incuse W W (in block font) on truncation. Reverse - a miniature version of the crown design excepting the collar of the garter is mainly obscured by the royal arms. *Dark grey tone, minimal hairlines, virtually FDC and rare.*

\$4,500



2542

1831 Proof Shilling, William IV, 1830-37. S-3835, ESC-2488. Davies-340. 5.63g. incuse W.W. (in block font) on truncation. Reverse - Crowned (St Edwards) denomination in two lines within wreath formed by branches of olive and oak tied with a ribbon below the date. *Attractive dark golden grey brilliance with highly frosted bust, FDC and rare.*

\$2,000

Ex Noble Numismatics Sale 101 (lot 2099) F.S.Dobbin Collection, and Sale 54 (lot 1095).



2543

1831 Proof Shilling, William IV, 1830-37. S-3835, ESC-2488. Davies-340. 5.63g. incuse W.W. (in block font) on truncation. Reverse - Crowned (St Edwards) denomination in two lines within wreath formed by branches of olive and oak tied with a ribbon below the date. *Slight hairlines, uneven high wire rim, dark blue grey brilliance, nearly FDC and rare.*

\$1,500



2544

1831 Proof Sixpence, William IV, 1830-37. S-3836, ESC-2500. (R2) Davies-360. 2.82g. Straight-grained edge. Reverse - Crowned (St Edwards) denomination in two lines within wreath formed by branches of olive and oak tied with a ribbon below the date. *Brown golden grey tone, nearly FDC/FDC and very rare.*

\$2,000

Ex S.A. Bole



2545

1831 Proof Sixpence, William IV, 1830-37. S-3836; ESC-2501; Davies-360. 2.80g. With the far more common plain edge. Reverse - Crowned (St Edwards) denomination in two lines within wreath formed by branches of olive and oak tied with a ribbon below the date. *Brilliant, dark blue reverse, FDC and rare.*

\$1,500



2546

1831 Proof Sixpence, William IV, 1830-37. S-3836; ESC-2501; Davies-360. 2.80g. With the far more common plain edge. Reverse - Crowned (St Edwards) denomination in two lines within wreath formed by branches of olive and oak tied with a ribbon below the date. *Dark grey brilliance, highly frosted bust, nearly FDC/FDC and very rare.*

\$1,250



2547

1831 Proof Maundy Set, William IV, 1830-37. S-3840; ESC-2548; Davies-420. Fourpence to Penny in Silver (4 coins). 4d - PR 67; 3d - PR 65; 2d - PR66 and 1d - PR65. PCGS encapsulated, and WINGS stickered. Reverse - Crowned numeral with central date split on either side. This plain design is within a wreath formed solely by oak branches tied with a ribbon below. *Deep toning, uneven on first two, brilliant FDC and rare. (4)*

\$1,750



2548

1831 Proof Maundy Set, William IV, 1830-37. S-3840; ESC-2548; Davies-420. Fourpence to Penny in Silver (4 coins) 4d 1.88g, 3d 1.39g, 2d 0.94g and 1d 0.47g. Reverse - Crowned numeral with central date split on either side. This plain design is within a wreath formed solely by oak branches tied with a ribbon below. *Attractive dark blue grey brilliance, FDC and rare.* (4)

\$1,500



2549

1831 Regular Maundy Set, William IV, 1830-37. S-3840; ESC-2548; Davies-420. Fourpence to Penny in Silver (4 coins). 4d 1.89g, 3d 1.14g, 2d 0.93g and 1d 0.46g. Reverse - Crowned numeral with central date split on either side. This plain design is within a wreath formed solely by oak branches tied with a ribbon below. *With case, very fine; coins toned, nearly uncirculated.* (4)

\$500

1831 Proof Bronzed Coins



2550

1831 Proof Penny, William IV, 1830-37. S-3845, Peck 1456 (V.R.). Reverse struck en medaille. Bronzed proof with plain arms on the saltire - very rare in this die orientation. *Full chocolate brown nearly FDC/ FDC and very rare.*

\$2,500



2551

1831 Proof Penny, William IV, 1830-37. S-3845, Peck 1457 (S). Bronzed proof with plain arms on the saltire. Error reverse confirming double struck with 5 degrees anticlockwise change in orientation between strikes. *Brilliant bronzed deep cameo proof, FDC and rare as such.*

\$2,000



2552

1831 Proof Penny, William IV, 1830-37. S-3845, Peck 1457 (S). Bronzed proof with plain arms on the saltire. *Chocolate brown with bluish highlights, FDC and scarce.*

\$1,500



2553

1831 Proof Penny, William IV, 1830-37. S-3845, Peck 1457 (S). Bronzed proof with plain arms on the saltire. Encapsulated NGC PF 65 BN CAMEO - very rare with cameo designation. *Dark chocolate brown, virtually FDC/FDC.*

\$1,500



2554

1831 Proof Halfpenny, William IV, 1830-37. S-3847, Peck 1463 (S). Bronzed Proof with two incuse lines on arms of the saltire. *Even bluish chocolate brown brilliance, FDC and scarce.*

\$1,000



2555

1831 Proof Halfpenny, William IV, 1830-37. S-3847, Peck 1463 (S). Bronzed proof with two incuse lines on arms of the saltire. Encapsulated NGC PF 64 BN CAMEO - very rare with cameo designation. *Dark chocolate brown brilliance, virtually uncirculated.*

\$1,000



2556

1831 Proof Halfpenny, William IV, 1830-37. S-3847, Peck 1462 (V.R.). Reverse struck en medaille. Bronzed proof with two incuse lines on arms of the saltire. - very rare in this die orientation. *Minor rim damage, chocolate brown bronzed proof, otherwise FDC and very rare.*

\$1,000



2557

1831 Proof Farthing, William IV, 1830-37. S-3848, Peck 1467 (V.R.). Reverse struck en medaille. Bronzed proof with a single central incuse line down the arms (making three incuse lines) on the saltire - very rare in this die orientation. *Bluish highlight on chocolate brown brilliance, nearly FDC and very rare.*

\$1,000



2558

1831 Proof Farthing, William IV, 1830-37. 1831, S-3848, Peck 1468 (S). Bronzed proof with a single central incuse line down the arms (making three incuse lines) on the saltire. Encapsulated NGC PF 66 BN CAMEO - very rare in this grade, especially with cameo designation. *Gem dark chocolate brown brilliance, FDC and scarce.*

\$1,000



2559

1831 Proof Farthing, William IV, 1830-37. S-3848, Peck 1468 (S). Bronzed proof with single central incuse line down the arms (making three incuse lines) on the saltire. *Slight spotting, FDC and scarce.*

\$750



Queen Victoria 1837 - 1901



2560

Coronation of Victoria, 1838, medal in bronzed copper (36mm) 24.47g by B.Pistrucci (BHM 1801; Eimer 1315). *Brilliant chocolate brown patina, nearly FDC.*

\$200

The official Royal Mint issue.



2561

1839 Proof Set Case, Victoria, 1837-1901. S-PS3 Young head, "Una and the Lion" Pattern Five Sovereigns and Sovereign to Farthing (15 coins). The coins are struck in a mix of die alignments, as noted. A contemporary rare shagreen covered maroon leather covered timber presentation case. Spade shaped case fitted with brass swivel hooks and brass push-button at front. Round corners with blue velvet roundels in a 3-3-6-3 pattern with blue ribbon lifters and white silk lining to the lid. Mintage is estimated at 300 sets struck, with the first sets finally released to collectors in 1843. Given the dominance of individual low denomination silver and bronzed copper proof coins seen in the market, their number struck must have been more significant than the number of complete sets. Collectors could order 1839 proof sets plus individual coins privately from William Wyon (the engraver) until he died in 1851. Later strikings are known (see the 1839 overdate halfpenny and mule 6d in this catalogue), likely for very well connected individuals. Obverse - Known as the young head with the bust of Victoria facing left without drapery. Her hair bound by a double fillet and gathered in a chignon with an extra curl in front which crosses the left ear. W. W. initials on the truncation with the legend VICTORIA DEI GRATIA and the date below. This Wyon design was used with minor modifications for the sovereign, half-sovereign, crown, half-crown, penny, halfpenny and farthing. The shilling, sixpence and groat have a similar effigy, but the legend is extended to VICTORIA DEI GRATIA BRITANNIAR : REG : F : D : . The Maundy legend is VICTORIA D: G: BRITANNIAR: REGINA F: D:.. *Good very fine and rare.*

\$1,000

Ex Bowers & Merena (lot 455).



2562

1839 Proof Set Case, Victoria, 1837-1901. 1839, The standard maroon leather covered timber presentation case with shagreen (shark leather) cover. Spade shaped case with round corners fitted with brass swivel hooks and brass push-button at front. Inside, the base comprises blue velvet roundels in a 3-3-6-3 pattern with blue ribbon lifters and white silk lining to the lid. *Very fine and rare.*

\$900

Ex Bowers & Merena (lot 455).

THE UNA AND THE LION PATTERN



2563

1839 Proof Una and the Lion Five Sovereigns, Victoria, 1837-1901. S-3851, W&R 278 (R4,) L&S 17. 38.56g. Lettered edge DECUS ET TUTAMEN ANNO REGNI TERTIO in small, raised letters (in relief) with rose stops. The edge translates as an ornament and a safeguard in the third year of the reign. The broad rims display a characteristic cud between 10:00 and 12:00 on the reverse indicating a late die state. Other die markers in the obverse fields confirm the dies' later state. Wyon placed a decorative border on both sides with an egg and dart design which is also characteristic of this coin. Obverse - six complete scrolls to front fillet (ribbon) and 11 full leaves to rear fillet. The legend reads VICTORIA D : G: BRITANNIARUM REGINA F : D: - translates as Victoria by the grace of God, Queen of the Britains, defender of the faith. Reverse - struck en Medaille full-length figure of Victoria as Una facing left leading the lion with DIRIGE in legend and garter star on the shoulder. In the exergue, MDCCCXXXIX under which is W.WYON. R.A. The legend reads DIRIGE DEUS GRESSUS MEOS which translates as may the Lord direct my steps, and it is thought it might have been Queen Victoria's personal prayer. *Choice deep cameo proof fully sealed brilliant fields, die break rim to paw, two dried moisture spots mentioned for accuracy, one of the finest known, as such of great importance, the gem of this collection, extremely rare.*

\$650,000

Despite only appearing on a pattern crown sized gold piece and ultra-rare off metal strikes, the endearing charm of this design has made it one of the world's most desirable coins. It is struck in high frosted relief and is arguably one of the world's most beautiful coins. They never circulated and were consistently worth more than their face value. The primary purpose of the Una pattern was to anchor the fifteen coin proof set, which first became available in 1843. Labour value (multiple of the average workers' wage) calculators reveal that £5 in 1843 was equivalent to £3,650 in 2022 money. These coins were only affordable to the wealthy upper classes. Unfortunately, the majority of these pieces were mishandled by 19thC. collectors who didn't appreciate their weight and the extreme fragility of the mirror proof fields and couldn't resist attempts at cleaning them. Obverse: truncated bare effigy of the young Queen faces left, the truncation displays the engraver's name and title W.WYON R.A in relief. R.A. stands for Royal Academician; William was the first medallist to be elected to associate (1831) of the Royal Academy. He stated he was trying to create an excellent likeness whilst capturing Victoria's "spontaneous youthful charm". This portrait is considered his finest rendition of the young Queen. The hair is brushed back and up from her neck and gathered in a chignon. An ornamented band and fillet bind her coiffure. The band has six complete scrolls visible above the lock of hair which brushes the top of her ear, and the rear fillet reveals 11 full leaves.



2564

1839 Proof Sovereign, Victoria, 1837-1901. S-3852, W&R 302 (R4). 7.78g. Obverse - first small young head. Reverse - by Merlen, a plain square shield of Royal Arms crowned. The escutcheon of pretence, bearing the arms of Hannover, disappears as it only passes by male descent. The shield is encircled by a laurel wreath tied by a ribbon revealing two loops. Below the ribbon, is the united rose thistle and shamrock. Legend reads *BRITANNIARUM REGINA FID : DEF :* flanked by decorative stops - see half crown description, struck en medaille. Plain edge. *Slightly scuffed with edge damage, deep cameo, otherwise nearly FDC and very rare.*

\$12,500



2565

1839 Proof Half Sovereign, Victoria, 1837-1901. S-3859, L&S 17, W&R 343 (S). 3.81g. Obverse - similar with no designers initials. Reverse - by Merlen, a garnished square shield of Royal Arms crowned. With no wreath or united floral emblems. Legend reads *BRITANNIARUM REGINA FID : DEF :* and is flanked by decorative stops (comprising an oval surrounded by six beads to form a floret) as in the *GEORGE IV* obverse designs struck in coin alignment. Plain edge. *Minor hairlines, brilliant cameo proof, nearly FDC and scarce.*

\$7,500



2566

1839 Proof Crown, Victoria, 1837-1901. S-3882, ESC-2560, L&S 38, Davies - 430. (R) 28.22g. Obverse - W.WYON R.A. on truncation with date below. Reverse - similar to sovereign struck in coin alignment. Plain edge. *Gem deep cameo proof with grey and iridescent toning, very rare in this condition, one of the finest known.*

\$60,000



2567

1839 Proof Half Crown, Victoria, 1837-1901. S-3885, ESC-2708, Davies-560. (S) 13.52g. Obverse - W.W. in relief on truncation; ribbons in hair comprise one ornate in front of the second plain fillet. Reverse - similar to the sovereign struck en medaille. Plain edge. *Iridescent toned brilliance, FDC and rare as such.*

\$8,000



2568

1839 Proof Half Crown, Victoria, 1837-1901. S-3885, ESC-2708, Davies-560. (S) 14.01g. Obverse - W.W. in relief on truncation; ribbons in hair comprise one ornate in front of the second plain fillet. Reverse - similar to the sovereign struck in coin alignment. *Gunmetal grey tone, vertical hairline under chin, otherwise virtually FDC and scarce.*

\$6,500



2569

1839 Proof Shilling, Victoria, 1837-1901. S-3903, ESC-2977, Davies-852. (S) 5.63g. Obverse - second young head - chignon ends in tight curl; -W.W. in relief on truncation. Reverse - Merlen design with the words ONE SHILLING under St Edwards crown and surrounded by two branches forming a wreath of oak and laurel tied by a ribbon with the date below, struck in coin alignment. Plain edge. *Attractive blue grey brilliance, FDC and scarce.*

\$3,000



2570

1839 Proof Shilling, Victoria, 1837-1901. S-3903, ESC-not listed, Davies-852. (R) 5.64g. Obverse - second young head; -W.W. in relief. Reverse - Merlen design with the words ONE SHILLING under St Edwards crown and surrounded by two branches forming a wreath of oak and laurel tied by a ribbon with the date below, struck en Medaille, with attempted scratching of planchet flaw in ribbon. Plain edge. *Dark iridescent toned brilliance, nearly FDC and rare.*

\$2,000



2571

1839 Proof Shilling, Victoria, 1837-1901. S-3904, ESC-2980, Davies-853. (R) 5.63g. Obverse - second young head; - W.W. is absent from the truncation. Reverse - Merlen design with the words ONE SHILLING under St Edwards crown and surrounded by two branches forming a wreath of oak and laurel tied by a ribbon with the date below, struck in coin alignment. Plain edge. *Dark grey tone, nearly FDC and rare.*

\$2,000



2572

1839 Proof Shilling, Victoria, 1837-1901. S-3904, ESC-2981, Davies-853. (R) 5.61g. Obverse - second head; - W.W. is absent from the truncation. Reverse - Merlen design with the words ONE SHILLING under St Edwards crown and surrounded by two branches forming a wreath of oak and laurel tied by a ribbon with the date below, struck en Medaille. Plain edge. *Beautifully toned gem proof, FDC and rare.*
\$4,000



2573

1839 Proof Sixpence, Victoria, 1837-1901. S-3908, ESC-3171, Davies-1031. (S) 2.74g. Obverse - first head. Reverse - Similar to the shilling except that it has SIX PENCE struck in coin alignment. Plain edge. *Attractive blue grey tone, FDC and scarce.*

\$1,500



2574

1839 Proof Sixpence, Victoria, 1837-1901. S-3908, ESC-3171, Davies-1031. (R) 2.92g. Obverse - first young head. Reverse - similar to the shilling except that it has SIX PENCE struck en Medaille. Plain edge. *Dark grey tone, nearly FDC and rare.*

\$1,500



2575

1839 Proof Sixpence from muled Dies, Victoria, 1837-1901. S-3912, ESC-3249, Davies unlisted. (R4) 2.88g. Straight-grained edge. Obverse - third young head, no lock on the cheek. Reverse - Merlen design with the words SIX PENCE under St Edwards crown and surrounded by two branches forming a wreath of oak and laurel tied by a ribbon with the date below struck en Medaille, struck after 1880 using the 1839 reverse. *Attractive light grey and iridescent tone, FDC and extremely rare.*

\$5,000



2576

1839 Proof Groat, Victoria, 1837-1901. S-3913, ESC-3324, Davies-1203. (S) 1.95g. Obverse - Young head no W W. Reverse - W. Wyon's Britannia seated to the right, holding a trident and resting on a union shield supported by a plinth, the date is in the exergue. FOUR PENCE is divided by the design, struck en Medaille. Plain edge. *Attractive deep cameo proof FDC and scarce.*

\$1,000



2577

1839 Proof Groat, Victoria, 1837-1901. S-3913, ESC-3325, Davies-1203. (R2) 1.85g. Obverse - Young head no W W. Reverse - W. Wyon's Britannia seated to the right, holding a trident and resting on a union shield supported by a plinth, the date is in the exergue. FOUR PENCE is divided by the design, struck in coin alignment. Plain edge. *Iridescent toned FDC and very scarce.*

\$1,250



2578

1839 Proof Maundy Set, Victoria, 1837-1901. S-3916, ESC-3482. (R). Obverse - Young head no WW. Reverse - Crowned numeral with central date split on either side. This plain design is within a wreath formed solely by oak branches tied with a ribbon below. 4d 1.89g, 3d 1.33g, 2d 0.99g and 1d 0.41g. Reverse for 1d struck in coin alignment. 2d, 3d and 4d en Medaille. It is not unusual for cased proof sets to contain Maundy with mixed die alignments. *Attractively toned, brilliant, FDC and rare.*

\$2,500



2579

1839 Proof Penny, Victoria, 1837-1901. S-3948, Peck 1479 (S) 18.86g. Obverse - young head (bare neck) w.w. incuse on truncation. Reverse - similar to GEORGE IV and WILLIAM III, penny designs with an ornamental trident. The legend reads BRITANNIAR : REG : FID : DEF:. *Hair line stain on reverse, fully brilliant bronzed cameo proof, FDC and scarce.*

\$3,000



2580

1839 Proof Penny, Victoria, 1837-1901. S-3948, Peck 1479 (S) 18.77g. Bronzed. Obverse - as above w.w. incuse on truncation. Reverse - as above ornamental trident and struck en Medaille. *Minor contact marks and hairline, otherwise dark chocolate bronze proof, nearly FDC and scarce.*

\$1,800



2581

1839 Proof Halfpenny, Victoria, 1837-1901. S-3949, Peck 1523 (S) 9.18g. Bronzed. Obverse - w.w. on truncation. Reverse - as above ornamental trident and struck en Medaille. *Minor surface hairlines; dark chocolate bronzed brilliance, nearly FDC and scarce.*

\$900



2582

1839 Proof Halfpenny, Victoria, 1837-1901. 1839, S-3949, Peck 1523 (S) 9.34g. Bronzed. Obverse - as above w:w. on truncation. Reverse - as above ornamental trident and struck en Medaille. Legend has a serif missing to the top of the D in DEF. *Double struck rim 4 to 8 o'clock, lighter blue brown bronzed patina, nearly FDC and rare thus.*

\$900



2583

1839 Proof Halfpenny, Victoria, 1837-1901. S-3949, Peck 1523 (S) 9.03g. Obverse -young head w:w. incuse on truncation. Overdate variety 1839 over broad 1843 "ghost". Reverse - similar to GEORGE IV and William III, halfpenny designs with an ornamental trident. The legend reads BRITANNIAR : REG : FID : DEF:.. *Medium red chocolate brown brilliance, FDC and scarce.*

\$1,250



2584

1839 Proof Halfpenny, Die alignment variety, Victoria, 1837-1901. S-3949, Peck 1523* (V.R.) 9.18g. Bronzed. Obverse - as above w.w. incuse on truncation. Reverse - similar to GEORGE IV and William III halfpenny designs with an ornamental trident. The legend reads BRITANNIAR : REG : FID : DEF: struck in coin alignment. *Minor obverse contact marks, lighter bronzing on the obverse, nearly FDC/FDC and very rare.*

\$1,500



2585

1839 Proof Farthing, Victoria, 1837-1901. S-3950, Peck 1556 (S) 4.70g. Obverse - young head w.w. in relief on truncation. Reverse - similar to GEORGE IV and WILLIAM III, farthing designs with an ornamental trident. The legend reads BRITANNIAR : REG : FID : DEF:. *Some spotting, dark bluish brown patina, nearly FDC and scarce.*

\$1,000



2586

1839 Proof Farthing, Victoria, 1837-1901. S-3950, Peck 1556 (S) 4.22g. Bronzed. Obverse - w.w. in relief on truncation. Reverse - ornamental trident and struck en Medaille. Light planchet. *Unbarred As in GRATIA, full brilliant dark brown patina, FDC and rare thus.*

\$1,500



2587

1839 Proof Farthing, Victoria, 1837-1901. S-3950, Peck 1556 (S) 4.79g. Bronzed. Obverse - as above w.w. in relief on truncation. Reverse - as above ornamental trident and struck en Medaille. *Light spotting and hairlines, brilliant cameo proof, nearly FDC and scarce.*

\$1,000



2588

1839 Proof Farthing, Die alignment variety, Victoria, 1837-1901. S-3950, Peck 1557 (V.R.) 4.64g. Bronzed. Obverse - w.w. in relief on truncation. Reverse - similar to GEORGE IV and William III farthing designs with an ornamental trident. The legend reads BRITANNIAR : REG : FID : DEF: ornamental trident and struck in coin alignment. *Full red brown bronzed patina, FDC and very rare.*

\$1,500

THE GOTHIC CROWN DESIGN

William Wyon, as a designer/engraver, skilfully adopted the Gothic style in his engraving of the new silver crown design, where he reworked Queen Victoria's effigy for the obverse and adapted William Dyce's armorial design for the reverse. The Queen became interested in the crown and expressed a wish that the coins be struck in the most complete and perfect manner. Striking up its fine detail would involve more than one blow from the presses. Eight thousand lettered edge coins were individually struck and packed in envelopes before distribution through the banks to collectors. This care may explain why the Mint considers them all proof pieces. Only a few saw actual circulation, with most seen today in uncirculated albeit handled condition.

The Gothic crown is well established as one of the world's most beautiful coins, particularly when presented with a frosted finish. The lettered edge version has recently become extremely popular with collectors, given the 8000 number struck, making it more available than the 300-400 for the Una and the Lion piece. The Gothic crown is also seen with a plain edge, and these are much more proof-like with their high broad flat rims. The number struck is unknown, but they appear in the open market at about the same rate as the Una. Given that the previous 1831 and 1839 proof crowns were struck with plain edges, one may suspect the moneyers meant this version of the gothic crown to be considered proof.

Obverse - Victoria facing left wearing the imperial crown; her hair is similar to that on Wyon's Una but is more plaited; it still passes under the ears and is gathered into a chignon which is mostly hidden under the crown. Her dress is in the gothic style, with only the bodice section seen above the truncation. It is richly ornamented and trimmed with prominent lace medallions sitting just below a pearl border. The shoulder section comprises a brocade embroidered with the floral emblems for the three kingdoms - roses, thistles and shamrocks. The centre panel is relatively plain, but either side is defined by a quatrefoil brooch decorated with a central square of pearls. Legend is in old English, i.e. gothic script. **GOTHIC CROWNS** These crowns were struck predominantly in one die alignment with the lettered edge reverse in coin and the plain edge in medal or coin, depending on the die variety (see below). The lettered edge in medal alignment has been seen but is extremely rare. However, given the plain edge crowns were likely struck to order, both alignments are thought to exist for these pieces. The decorative border Wyon placed on both sides of these crowns comprises a "gothic" inspired design of sharp points where every second point is capped with a trefoil.



2589

1847 Proof Crown, Victoria, 1837-1901. mdcccxlvii i.e. 1847, S-3833, ESC-2571, L&S 57, Davies-471. (S) 28.18g. Struck in coin alignment. Edge Inscribed in small raised gothic characters decus * et * tutamen * anno * regni * undecimo "an ornament and a safeguard in the eleventh year of our reign". Obverse - Gothic bust; VICTORIA DEI GRATIA BRITANNIAR. REG : F:D. W W in tiny incuse letters on the right side of the truncation. Reverse - crowned cruciform shields, TUEATUR UNITA DEUS ANNO DOM MDCCCXLVII (may God guard these united (kingdoms)). At the sides of the crown on the first shield bearing the English arms is W W in incuse letters on the raised circlet. *Miniscule contact mark in front of mouth, beautiful iridescent toned brilliance, FDC, one of the finest known.*

\$30,000



2590

1847 Proof Crown, in contemporary maroon shagreen type leather-covered square case. Outer lid decorated with gold border and varying leather finishes. The case is fitted with a brass push-in lock and hinge, and inside is a blue velvet roundel with blue lifting ribbon and light blue silk to the inner lid. Victoria, 1837-1901. mdccclvii i.e. 1847, S-3833, ESC-2578, L&S 58, Davies-471. (R2) 27.87g. Struck in coin alignment. Plain edge. Obverse - Gothic bust; VICTORIA DEI GRATIA BRITTANNIAR. REG : F:D. W W in tiny incuse letters on the right side of the truncation Reverse - crowned cruciform shields, tueatur unita deus anno dom mdccclvii (may God guard these united (kingdoms). Legend has N over U in UNITA. At the sides of the crown on the first shield bearing the English arms are W W in incuse letters on the raised circlet. The coin exhibits the characteristic almost circular die crack through the lettering of the legend. This faint raised irregular line is found on most proofs of this type. *Obverse fields have been very lightly brushed, otherwise FDC and very rare; case is good very fine.*

\$35,000



2591

1847 Proof Crown, Presented with a contemporary maroon leather covered case, which is fitted with a brass swivel hook, top stamped in gold lettering CROWN PIECE. 1847. Roundel part of Inner blue velvet lining decorated in the corners with ornamental motifs (these faded) Victoria, 1837-1901. mdcccxlvi i.e. 1847, S-3833, ESC-2579, L&S 58, Davies-471. (R2) 28.15g. Reverse is struck en Medaille. Plain edge Obverse - Gothic bust; VICTORIA DEI GRATIA BRITANNIAR. REG : F:D. W W in tiny incuse letters on the right side of the truncation Reverse - crowned cruciform shields, TUEATUR UNITA DEUS ANNO DOM MDCCCXLVII (may God guard these united (kingdoms). Legend has M over inverted M in D.O.M. At the sides of the crown on the first shield bearing the English arms are W W in incuse letters on the raised circlet. *Obverse fields lightly brushed, otherwise full mint bloom, nearly FDC/FDC and very rare; case is very fine and rare.*

\$35,000



2592

1848 Pattern Florin, This florin marks the first attempt at decimalisation of the U.K. coinage with the issue of a one-tenth of a pound denomination. The Mint commissioned several different patterns, all engraved by William Wyon, combining various obverse and reverse designs. Presented here is the pattern adopted for the one-year type "Godless" florin issued in 1849. The profoundly religious Victorian public was outraged that DEI GRATIA or D:G (by the grace of God) was absent. This coin was replaced in 1851 with the Gothic florin, which is much closer in design to the Gothic crown. Obverse - The obverse effigy is a more truncated version of that on the Gothic five-shilling piece with minor variations in the design of the arches and orb on the crown. The legend VICTORIA REGINA 1848 in Roman lettering is very plain and in complete contrast to the Gothic versions. Reverse - The cruciform shield's design is based on the Gothic crown but more simplistic in its decoration with no delicate tracery. In the angles of the cross are the floral emblems, each beneath an arched canopy. The Garter Star is replaced with a double English rose at the centre. Legend ONE FLORIN ONE TENTH OF A POUND in Roman lettering. Victoria, 1837-1901. 1848, S-3890, ESC-2917, Davies-680 (R2) 11.30g. Reverse is struck en Medaille. Plain edge. Borders are beaded on both sides. Obverse - Crowned gothic bust, Godless type W W in relief between bust and date.; Reverse - crowned cruciform shields with central inner rose, outer legend inscribed ONE FLORIN ONE TENTH OF A POUND. *Gem cameo proof beautiful iridescent reverse, FDC and very rare, one of the finest known.*

\$7,500



2593

1853 Proof Set Case, Victoria, 1837-1901. S-PS4 Young head, Sovereign to Half-Farthing (16 coins). It includes a rare Gothic type crown and is the first set with a florin and sub farthing coins. The 1853 proof set is the most difficult set to acquire. The coins are struck with dies in coin alignment unless noted. With mid-20th C. reproduction maroon leather covered timber presentation case. Shield (heart?) shaped case fitted with a brass push-button lock at the front. Inside comprises blue velvet roundels in a 3-3-3-3-3-1 pattern with white silk lining to the lid. Mintage unknown but estimated at less than 50 sets struck. There is no certainty as to why this set came to be, but it may present a trial of the Mint Master's updated rules for proof coin manufacture. The jeweller's Hunt and Roskell held the Royal Warrant of Queen Victoria, and cased sets with their gold block identification are accepted as the original issue. Contemporary cases have also been reported with R & S Garrard & Co., Goldsmiths and Jewellers to the Queen, His Royal Highness The Prince Consort, and the Royal Family, again blocked onto the inside lid. For the first time, this set does not present the copper coins in a bronzed form which may reflect a change in aesthetics but may also result from the small quantities struck, making the laborious bronzing process non-viable in terms of cost. The higher value coins down to the florin are extremely rare in the market and likely derive from those sets struck. In contrast, the shilling to farthing 1853 proof coins, whilst rare, are found more regularly in accord with higher mintages. The fractional farthing is again rare in the open coin market, suggesting it was not as well collected. Obverse - known as the young head with the bust of Victoria facing left without drapery. Her hair bound by a double fillet and gathered in a chignon with an extra curl in front which crosses the left ear. W. W. initials on the truncation with the legend VICTORIA DEI GRATIA and the date below. This Wyon design was used with minor modifications for the sovereign, half-sovereign, crown, half-crown, penny, halfpenny and farthing. The shilling, sixpence and groat have a similar effigy, but the legend is extended to VICTORIA DEI GRATIA BRITANNIAR : REG : F : D : The Maundy legend is VICTORIA D: G: BRITANNIAR: REGINA F: D:. *Extremely fine.*

\$400



2594

1853 Proof Sovereign, Victoria, 1837-1901. S-3852D, W&R 305 (R3) 7.98g. Straight-grained edge. Obverse - second larger young head with WW incuse on truncation. Reverse - by Merlen, a plain square shield of Royal Arms crowned as per 1839 sovereign. The escutcheon of pretence, bearing the arms of Hannover, disappears as it only passes by male descent. The shield is encircled by a laurel wreath tied by a ribbon revealing two loops. Below the ribbon, is the united rose thistle and shamrock. Legend reads BRITANNIARUM REGINA FID : DEF : flanked by decorative stops - see half crown description. *Full or deep cameo, obverse fields with minimal hairlines, nearly FDC/FDC and extremely rare.*

\$30,000



2595

1853 Proof Half Sovereign, Victoria, 1837-1901. S-3859, W&R 346 (R2) 4.01g. Straight-grained edge. Obverse - first young head, small date in figures below the bust. Reverse - by Merlen, a garnished square shield of Royal Arms crowned. With no wreath or united floral emblems as per 1839 half sovereign. Legend reads BRITANNIARUM REGINA FID : DEF : and is flanked by decorative stops (comprising an oval surrounded by six beads to form a floret) as in the GEORGE IV obverse designs. *Nearly full original mint state proof, FDC and very rare.*

\$20,000



2596

1853 Proof Gothic Crown, Victoria, 1837-1901. S-3884, ESC-2584, L&S 69, Davies-474. (R3) 28.24g. Inscribed edge in small raised gothic characters decus * et * tutamen * anno * regni * decimo * septimo "an ornament and a safeguard in the seventeenth year of our reign". Obverse - Gothic bust; VICTORIA DEI GRATIA BRITANNIAR. REG : F:D. W W in tiny incuse letters on the right side of the truncation. Reverse - same crowned cruciform shields design as 1847 crowns but with 1853 date mdcccli. *Attractive light grey and blue tone, reverse iridescent, nearly FDC/FDC and extremely rare.*

\$50,000



2597

1853 Proof Half Crown, Victoria, 1837-1901. S-3888, ESC-2736, Davies-576. (R3) 14.14g. Straight-grained edge Proof only date. Obverse - young head with two plain fillets and no initials on truncation. Reverse - crowned square-topped shield Grey blue tone, brilliant nearly FDC/FDC and extremely rare.

\$12,500



2598

1853 Proof Gothic Florin, Victoria, 1837-1901. S-3891, ESC-2827, Davies-724. (R2) 11.30g. Straight-grained edge Obverse - brit: has single t, W W in relief between bust and border trefoils at 6 O'clock with 1853 as mdcccliii and no stop after the date. Reverse - crowned cruciform shields with central floriated cross Dark grey tone, brilliant nearly FDC/FDC and very rare.

\$10,000



2599

1853 Proof Shilling, Victoria, 1837-1901. S-3904, ESC-3003, Davies-867. (R2) 5.64g. Straight-grained edge. Obverse - second young head (no W.W.). Reverse - Merlen design with the words ONE SHILLING under St Edwards crown and surrounded by two branches forming a wreath of oak and laurel tied by a ribbon with the date below. *Fully brilliant blue grey and iridescent proof, FDC and very rare.*

\$5,000

Ex Noble Numismatics Sale 104 (lot 2548), P.Connolly Collection.



2600

1853 Proof Shilling, Victoria, 1837-1901. S-3904, ESC-3003, Davies-867. (R2) 5.65g. Straight-grained edge. Obverse - second young head (no W.W.). Reverse - Merlen design with the words ONE SHILLING under St Edwards crown and surrounded by two branches forming a wreath of oak and laurel tied by a ribbon with the date below. *Medium grey semi brilliant proof, FDC and very rare.*

\$4,500



2601

1853 Proof Sixpence, Victoria, 1837-1901. S-3908, ESC-3190, Davies-1050. (R2) 2.85g. Straight-grained edge. Obverse - second young head (no W.W.). Reverse - Merlen design with the words SIX PENCE under St Edwards crown and surrounded by two branches forming a wreath of oak and laurel tied by a ribbon with the date below. *Attractive blue grey and iridescent toned gem FDC and very rare.*

\$3,000



2602

1853 Proof Sixpence, Victoria, 1837-1901. S-3908, ESC-3190, Davies-1050. (R2) 2.82g. Straight-grained edge. Obverse - second young head (no W.W.). Reverse - Merlen design with the words SIX PENCE under St Edwards crown and surrounded by two branches forming a wreath of oak and laurel tied by a ribbon with the date below. *Slightly brushed on obverse, otherwise nearly FDC and very rare.*

\$2,000



2603

1853 Pattern Groat, Victoria, 1837-1901. S-3913, ESC-not listed. (VR) Davies- not listed (Dies 2 A) 1.89g. Straight-grained edge. Provenance ex Major A.W. Foster. Obverse (no W.W. and no striations on truncation) - young head with lowest hair wave covering the top of the ear, which has a pronounced lobe. A long thick curve to the hair at the bottom of the chignon forms an almost complete circle. The chignon is dense with minimal openings. Wide flat rim. G letters have both left and right serifs. Britannia above date and with value on sides. There is a sharp end to the top horizontal bar of the 5 numeral in the date, a doubling of letters FoUR peNce, broad flat rim. *Gem olive and iridescent proof FDC and very rare.*

\$3,000



2604

1853 Pattern Groat, Victoria, 1837-1901. S-3913, ESC-not listed. (VR) Davies- not listed (Dies 3 A) 1.87g. Straight-grained edge. Obverse (no W.W. no striations on truncation) - young head with hair covering the top of the ear. Minimal curve to the hair at the bottom of the chignon. Wide flat rim. The right leg of 1st. N in BRITANNIA points to space between denticles on the rim. G letters have both left and right serifs. A narrow gap between A and D of VICTORIA D:G Reverse struck en Medaille Britannia above date and with value on sides. Sharp end to the top horizontal bar to 5 in date doubling of letters FoUR peNce, broad flat rim. *Untoned, nearly FDC and very rare.*

\$2,000



2605

1853 Proof Groat (Fourpence), The groat and threepence being the same diameter, shared the same obverse master tools. Therefore, the pattern groats listed below are later restrikes from obverse dies not listed in Davies as being used before 1862 (2 A) and 1857 (3 A). Victoria, 1837-1901. S-3913, ESC-3348. (R2) Davies 1228 (Dies 1 A) 1.89g. Straight-grained edge. From the set. Obverse (no W.W. with striations on truncation) - young head with the lowest hair wave separated from the top of the ear, which has only a trace of a lobe at its base. A long narrow curve to the hair at the bottom of the chignon forms a semicircle. Narrow irregular rim. The right leg of 1st. N in BRITANNIA points to a denticle on the rim. G letters have a right serif only. Reverse - struck en Medaille Britannia above date and with value on sides. Bulbous end to the top horizontal bar to 5 in date. This die imparts damaged denticles, irregular 3 in date and PENCE lettering. *Wire rim with notches above PENCE, grey toned, FDC and very rare.*

\$3,000



2606

1853 Maundy Set, Victoria, 1837-1901. S-3916, ESC-3496, Davies-1415. (R) Plain edge. 3d is dies 1A 4d 1.89g, 3d 1.42g, 2d 0.93g and 1d 0.47g. Obverse -second young head (no W.W.). Reverse - Merlen's crowned numeral design with a central 1853 split on either side. This plain design is within a wreath formed solely by oak branches tied with a ribbon below. *First nearly uncirculated, others uncirculated.* (4)

\$400



2607

1853 Proof Maundy Set, Victoria, 1837-1901. S-3916, ESC-3497, Davies-1415. (R2) Plain edge. 3d is Davies dies 1A 4d 1.87g, 3d 1.42g, 2d 0.96g and 1d 0.48g. Obverse - second young head (no W.W.). Reverse - Merlen's crowned numeral design with a central 1853 split on either side. This plain design is within a wreath formed solely by oak branches tied with a ribbon below. *First untuned, others fully grey patina FDC and very rare.* (4)

\$3,000



2608

1853 Proof 4d Maundy, Victoria, 1837-1901. S-3913, ESC-3190. (R2) Plain edge. 1.86g. Obverse - second young head (no W.W.). Reverse - Merlen's crowned numeral design. *Grey toned, good extremely fine.*

\$100



2609

1853 Proof 2d Maundy, Victoria, 1837-1901. S-3913, ESC-3190. (R2) Plain edge. 0.94g. Obverse - second young head (no W.W.). Reverse - Merlen's crowned numeral design. *Light peripheral golden tone or reverse, uncirculated and very rare.*

\$200

1853 Proof Copper coins from the set (all with a plain edge and reverses struck en Medaille). In contrast to previous sets (1826-1839), bronzed copper versions are listed in Peck as extremely rare and found in coin alignment.



2610

1853 Proof Penny, Victoria, 1837-1901. S-3948, Peck 1502 (VS). Copper. Obverse - young head (bare neck) w.w. incuse on truncation. Reverse - similar to GEORGE IV and WILLIAM III, penny designs with an ornamental trident and plain arms on the saltire. The legend reads BRITANNIAR : REG : FID : DEF: Reverse struck en Medaille. Encapsulated NGC PF 66 RB - top of population census. *Full red and slight brown, gem FDC and very scarce, probably the finest known.*

\$6,000



2611

1853 Proof Penny, Victoria, 1837-1901. S-3948, Peck 1502 (VS) 18.9g. Obverse - young head (bare neck) w.w. incuse on truncation. Reverse - Similar to GEORGE IV and WILLIAM III, penny designs with an ornamental trident. The legend reads BRITANNIAR : REG : FID : DEF:. *Hints of red, attractive blue and red brown, FDC and very scarce.*

\$4,500



2612

1853 Proof Halfpenny, Victoria, 1837-1901. S-3949, Peck 1541 (VS) Copper 9.43g. Obverse - as above w:w. incuse on truncation. Reverse - similar to GEORGE IV and William III halfpenny designs with an ornamental trident. The legend reads BRITANNIAR : REG : FID : DEF:. *Multi-coloured toning. Red and brown original FDC and very scarce.*

\$1,800



2613

1853 Proof Halfpenny, Victoria, 1837-1901. S-3949, Peck 1541 (VS) 9.45g. Obverse - as above w:w. incuse on truncation. Reverse - similar to GEORGE IV and William III halfpenny designs with an ornamental trident. The legend reads *BRITANNIAR : REG : FID : DEF:.* *Bronzed appearance, slightly handled, otherwise with brilliance, FDC and very scarce.*

\$1,500



2614

1853 Proof Halfpenny, Victoria, 1837-1901. S-3949, Peck 1541 (VS). Copper 9.44g. Obverse - as above w:w. incuse on truncation. Reverse - similar to GEORGE IV and William III halfpenny designs with an ornamental trident. The legend reads *BRITANNIAR : REG : FID : DEF:.* *Deep red brown copper tone, slight spotting, semi brilliant, nearly FDC and very scarce.*

\$1,200



2615

1853 Proof Farthing, Victoria, 1837-1901. S-3950, Peck 1579 (VS) 4.74g. Obverse - young head w.w. in relief on truncation. Reverse - similar to GEORGE IV and WILLIAM III, farthing designs with an ornamental trident. The legend reads BRITANNIAR : REG : FID : DEF:. *Blue brown, bronzed appearance, brilliant FDC and very scarce.*

\$1,500



2616

1853 Proof Half Farthing, Victoria, 1837-1901. S-3951, Peck 1601 (R) 2.38g. From dies by William Wyon. Obverse - young head no W W, dies from the Maundy 4d, the legend reads VICTORIA D: G: BRITANNIAR: REGINA F: D: Reverse - St Edwards crown above value and 1853. Below which are the joined floral symbols for England, Scotland and Ireland. *Blue brown brilliance, FDC and rare.*

\$1,500



2617

1853 Proof Quarter farthing, From dies by William Wyon, this coin was not part of the proof set and is the smallest denomination in the series. It was issued solely for use in Ceylon, given its similar size to a trading coin used there. Victoria, 1837-1901. S-3953, Peck 1614 (ER). Copper 1.21g. Obverse - young head no W W, dies from the Maundy 2d, the legend reads VICTORIA D: G: BRITANNIAR: REGINA F: D: Reverse - St Edwards crown above value and 1853. Below which is the English rose with leaves. *Dull toned, brown with traces of red, otherwise FDC and extremely rare.*

\$1,500



2618

Golden Jubilee of Queen Victoria, 1887, medallion in silver (77mm) 217g by J.E.Boehm/F.Leighton (BHM 3219; Eimer 1733b) in official presentation case inscribed in gilt on lid above coat of arms C.G.R. (Cape Government Railways), with Mint descriptive card inside. *Attractively toned, nearly FDC and rare as such.*

\$1,000

The official Royal Mint issue.



2619

Golden Jubilee of Queen Victoria, 1887, medallion in bronze (77mm) 218g by J.E.Boehm/F.Leighton (BHM 3219; Eimer 1733b) in official mint case of issue. *Even medium red brown patina lightly toned FDC.*
\$400

1887 NEW COINAGE -JUBILEE HEAD PROOF SET

The 1887 proof set was the first official Royal Mint issued proof set made available to the general public. Previous issues were procured privately from the engraver. The cases were optional and relatively expensive (see 1893 sets) and are much rarer than the sets. This proof set was a much more commercial endeavour than the 1826 issue. It operated on a first-come, first-served basis with a significant premium over face value. The Mint accepted orders well into 1889, and as per 1826, the sets were issued in batches. The 1887 proof issues present the most numismatically complex field of study in the whole series. The complexity results from the number of die variations for each denomination, the likely result of the Mint's rush to introduce the new obverse in time for the Jubilee celebration. Rare patterns appear among these proof coins, along with coins revealing minor die changes. Production improvements likely continued during the extended period these proofs were available.

This collection includes many of these varieties but is far from complete, and new discoveries are likely with further research. The design was finally termed Jubilee as an afterthought. It was not meant for such an occasion, but delays in its execution resulted in its release coinciding with Her Majesties golden Jubilee. The concept of a new, more age-appropriate effigy for the Queen arose nearly ten years earlier, by which time minor tweaks to age William Wyon's near 40-year-old portrait of the teenage queen were no longer realistic. The new effigy (that of a widowed Queen in mourning) received more than its fair share of criticism, particularly on the precarious positioning of the small crown. This is despite the Queen herself favouring the lightweight crown and ensuring it was the one used in the final design. The reverses on the new coins were also criticised for their lack of denominations to indicate their value. This disapproval was heightened by the similar size of the new double florin and crown.

Obverse - Crowned bust of Queen Victoria facing left with modellers initials J.E.B . (Joseph Edgar Boehm) on the truncation. The queen wears a small crown on a long veil edged with lace and secured by a double-layered headband. Her dress has a bodice crossed with a sash (ribbon) and is adorned with the Star of the Garter (part hidden) and badge of the Imperial Order of the Crown of India. Her jewellery comprises a pearl pendant attached to a pearl necklace and matching two pearl earring. The effigy on the large Jubilee medal is more detailed and elaborately decorated, particularly in the mourning veil and includes the Order of Victoria and Albert, which is missing from the coin designs. For the Jubilee series, the engraver Leonard Charles Wyon is responsible for engraving the obverse models prepared from life by Sir J.E. Boehm to form the master tools. In addition, L. C. Wyon designed and engraved the reverses for the half-sovereign and minor silver coins himself. Legend for 5, 2, & 1 sovereigns, Crown: VICTORIA D : ei G : ratia BRITT : annia REG : ina F : idei D: efensor; Translation: Victoria by the Grace of God, Queen of Britain, Defender of the Faith.

The borders on both sides of these coins are unusual in that they are not decorated with denticles adjacent to the rim but instead have rectangular slots confined by an inner raised circle. On the other coins, the legend was shortened to avoid duplicating the lettering on their heraldic reverse. In addition, these coins have denticular borders. Half Crown, - VICTORIA . DEI . GRA . BRITT . REG « Sovereign, Double Florin, Florin, VICTORIA DEI GRATIA . Shilling, Sixpence, Threepence & Maundy - VICTORIA DEI GRATIA BRITT: REGINA F : D: Edge is straight-grained unless specified; reverse die axis struck en Medaille. No bronze coins were issued as part of the proof sets, and these minor pieces did not use the Jubilee bust, only changing from the "bun head" well after the new veiled or old head design was enacted. The heraldic sixpence reverse was a one year only type as its square shield design proved too similar to the half-sovereign and was passed as such after gilding. The modified Merlen design "value with oak and laurel wreath" was reactivated for the rest of the series.



2620

1887 Long Proof Set Case - Early Issue, Victoria, 1837-1901. S-PS5, Five Sovereigns to Threepence (11 coins). Official red shagreen style leather covered timber presentation case. The lid has a stepped design and is stamped with the royal arms in gold leaf. Rectangular shaped case fitted with a brass push-button lock at the front. Inside comprises blue velvet roundels in a 4-4-3- pattern with white silk lining to the lid. These coins have weaker decorative borders to more common highly frosted cameo sets struck later; their dies are also slightly different in design details, and the rims are narrower. In addition, the coins typically reveal more highly polished fields to compensate for less frosting on the raised parts of their designs. Mintage unknown and assumed part of the 797 sets struck, they are far rarer in the market than the later improved sets. *Good very fine.*

\$700

Ex Noble Numismatics Sale 95 (lot 4898), as are the following 11 lots.



2621

1887 Proof Five Sovereigns, Victoria, 1837-1901. S-3864, W&R 285 (Scarce) L&S 72. 39.84g. Reverse Benedetto Pistrucci's St George and the Dragon small B.P. in relief below right of exergue. Three strands to the base of the horses tail, unbroken lower streamer to helmet. *Deep cameo proof with minimal hairlines, virtually FDC and scarce.*

\$30,000



2622

1887 Proof Two Sovereigns, Victoria, 1837-1901. S-3865, W&R 290 (Scarce). 15.98g. Obverse - Joachim E. Boehm's Jubilee bust with small crown and veil, J.E.B. had B partly off truncation. Base of veil has less elaborate ornamentation. Reverse Benedetto Pistrucci's St George and the Dragon small B.P. in relief below right of exergue. *Deep cameo proof, FDC and scarce.*

\$10,000



2623

1887 Proof Sovereign, Victoria, 1837-1901. S-3866, W&R 333 (Scarce). 7.99g. Obverse - Joachim E. Boehm's Jubilee bust with small crown and veil, J.E.B. high on truncation with hooked J. Slightly smaller effigy revealing more detail at the base of the Star of the Garter. The first legend type with the top of the crown set into the decorative border and the legend's D:G: is further from the crown. *Deep cameo proof, minimal hairlines, virtually FDC and scarce.*

\$8,000



2624

1887 Proof Half Sovereign, Victoria, 1837-1901. S-3869, W&R 362 (Scarce). 4.03g. Obverse - Joachim E. Boehm's Jubilee bust with small crown and veil, J.E.B. on truncation. Reverse - J.B.Merlen's crowned garnished shield, the base of garnish splits the date, Detail on the inner shield and crown are more delicate than the later proof, with the crown exhibiting two smaller fleurs de lis. *Deep cameo, FDC and scarce.*

\$5,000



2625

1887 Proof Crown, Victoria, 1837-1901. S-3921, ESC-2586, L&S 74, Davies 480 (R). 28.16g. equivalent dies to the Five Sovereign though slightly larger at 38mm. Obverse - Joachim E. Boehm's Jubilee bust with small crown and veil, J.E.B. on truncation. Reverse - Benedetto Pistrucci's St George and the Dragon small ...P. in relief below right of exergue, B is badly deformed. *Deep blue grey brilliance, FDC and rare.*

\$5,500



2626

1887 Proof Double Florin (Four Shillings), Victoria, 1837-1901. S-3922, ESC-2696, L&S 97, Davies 540 (R). 22.34g. Obverse - Joachim E. Boehm's Jubilee bust with small crown and veil, J.E.B. on truncation. Reverse - Roman I in date; Royal Arms present as four crowned shields in cruciform pattern centred by a Garter star. In the angles are four sceptres featuring symbols for the three kingdoms, i.e. England (sceptre with a cross), Ireland (harp) and Scotland (thistle). The interrupted legend reads REG: 18 (crown) 87 FID: (crown) DEF: (crown) BRITT: (crown). This reverse takes inspiration from the 17th C Thomas Simon's five guineas design. However, the public soon gave the disparaging moniker "radiating kitchen poker and tea trays". *Brilliant, reverse blue toned, FDC and rare.*

\$1,800



2627

1887 Proof Half Crown Pattern, Victoria, 1837-1901. S-3924, ESC-2772, Davies 640 (R). 13.94g. Obverse - Joachim E. Boehm's Jubilee bust with small crown and veil, J.E.B. on truncation. Initial bust (very rare) with 20 pearls to brooch instead of 16. A large gap on Obverse between rim and effigy and different veil design on bottom RHS. Reverse - Ornate crowned square shield of arms , over the Garter, the whole enclosed by the Collar of the Order with its gartered English roses and elaborate knots. The date is split either side of St George and the legend reads BRITANNIARUM REGINA FID : DEF : . *Deep blue grey toned brilliance, gem FDC and rare.*

\$2,000



2628

1887 Proof Florin, Victoria, 1837-1901. 1887, S-3925, ESC-2954, Davies 810? (R). 11.22g. Obverse - Joachim E. Boehm's Jubilee bust with small crown and veil, J.E.B. on truncation. Reverse - as per the double florin, Crowned cruciform shields with a Garter star in the centre. Four sceptres featuring symbols for the three kingdoms, i.e. England (sceptre with a cross), Ireland (harp) and Scotland (thistle), separate the shields. *Dark blue grey tone, minimal obverse hairlines, nearly FDC/FDC and rare.*

\$2,000



2629

1887 Proof Shilling, Victoria, 1837-1901. S-3925, ESC-3138, Davies 982 (R). 5.68g. Obverse - Joachim E. Boehm's small Jubilee bust with small crown and veil, J.E.B. on truncation. Edge knock above G in REGINA. Reverse - L. C. Wyon's square-topped crowned shield within the garter, with the crown breaking through. The loop on the Q in QUI (garter inscription) has a curved, looped tail. *Obverse rim bruise at 2:30, deep blue grey tone, nearly FDC and rare.*

\$600



2630

1887 Proof Sixpence Pattern, Victoria, 1837-1901. S-3928, ESC-3271, Davies unlisted (R7). 2.83g. Obverse - Joachim E. Boehm's small Jubilee bust with small crown and veil, J.E.B. off truncation. Bevelled narrow rim and upward stroke of R letter has serif on the left side in GRATIA. Reverse - as per the shilling with a square-topped crowned shield of arms within the garter, the crown breaks through the garter. On this coin, the garter fills the whole interior of the crown, and a dot (in relief) is present under the date - an extremely scarce die variety. *Deep blue grey tone, brilliant FDC and extremely rare.*

\$2,000



2631

1887 Proof Threepence, Victoria, 1837-1901. S-3931, ESC-3437, Davies 1330 (Dies 1 A) (S). 1.44g. Plain Edge ^Obverse - Joachim E. Boehm's small Jubilee bust with small crown and veil, Plain truncation. Three dots, one on each side of the cross above the crown. The left side of the crown has seven pearls. Reverse - Merlen's 1822 design was modified by L.C. Wyon, substituting St Edwards with the Imperial crown above Arabic numeral 3, which splits the date; near the rim, two oak branches form a wreath tied by a ribbon at the base. *Dark blue grey toned, brilliant FDC and scarce.*

\$800



2632

1887 Long Proof Set Case, Victoria, 1837-1901. S-PS5, Five Sovereigns to Threepence (11 coins). Official red shagreen style leather covered timber presentation case. The lid has a stepped design and is stamped with the royal arms in gold leaf. Rectangular shaped case fitted with a brass push-button lock at the front. Inside comprises blue velvet roundels in a 4-4-3- pattern with white silk lining to the lid. Mintage unknown part of the 797 sets struck. *Very fine.*

\$400



2633

1887 Proof Five Sovereigns, Victoria, 1837-1901. S-3864, W&R 285 (Scarce) L&S 72. 39.79g. Obverse - Joachim E. Boehm's Jubilee bust with small crown and veil, J.E.B. on truncation. Reverse Benedetto Pistrucci's St George and the Dragon small B.P. in relief below right of exergue. *Deep cameo proof with hairlines, nearly FDC and scarce.*

\$25,000



2634

1887 Proof Two Sovereigns, Victoria, 1837-1901. S-3865, W&R 290 (Scarce). 15.80g. Obverse - Joachim E. Boehm's Jubilee bust with small crown and veil, J.E.B. on truncation. Reverse Benedetto Pistrucci's St George and the Dragon small B.P. in relief below right of exergue. *Deep cameo proof, minimal hairlines, virtually FDC and rare.*

\$8,000



2635

1887 Proof Sovereign, Victoria, 1837-1901. S-3866, W&R 333 (Scarce). 7.96g. Obverse - Joachim E. Boehm's Jubilee bust with small crown and veil, J.E.B. on truncation. Second legend type, with top of crown clear of the decorative border, D:G: close to the crown. Reverse Benedetto Pistrucci's St George and the Dragon, WWP in relief on exergue below broken lance small B.P. in relief below right of exergue. *Deep cameo proof, hairlines, obverse contact marks, nearly FDC and scarce.*

\$5,000



2636

1887 Proof Half Sovereign, Victoria, 1837-1901. 1887, S-3869, W&R 362 (Scarce). 3.97g. Obverse - Joachim E. Boehm's Jubilee bust with small crown and veil, J.E.B. on truncation. Reverse - J.B.Merlen's crowned garnished shield, the base of garnish splits the date inner shield features are bold with large fleur de Lis. *Deep cameo proof, minimal hairlines slightly concave strike, nearly FDC and scarce.*

\$3,500



2637

1887 Proof Crown, Victoria, 1837-1901. 1887, S-3921, ESC-2586, L&S 74, Davies 480 (R). 28.20g. equivalent dies to the Five Sovereign though slightly larger. Obverse - Joachim E. Boehm's Jubilee bust with small crown and veil, J.E.B. on truncation. Reverse Benedetto Pistrucci's St George and the Dragon small B.P. in relief below right of exergue. *Slight toning, brilliant FDC and rare.*

\$5,000



2638

1887 Proof Double Florin (Four Shillings), Victoria, 1837-1901. S-3923, ESC-2698, L&S 98, Davies 541 (R). 22.53g. Obverse - Joachim E. Boehm's Jubilee bust with small crown and veil, J.E.B. on truncation. Reverse - Arabic 1 in date; Crowned cruciform shields Garter star in the centre four sceptres featuring symbols for the three kingdoms, i.e. England (sceptre with a cross), Ireland (harp) and Scotland (thistle). *Brilliant FDC and rare.*

\$2,200



2639

1887 Proof Double Florin (Four Shillings), Victoria, 1837-1901. S-3922, ESC-2696, L&S 97, Davies 540 (R). 22.34g. Obverse - Joachim E. Boehm's Jubilee bust with small crown and veil, J.E.B. on truncation. Reverse - Roman I in date; Crowned cruciform shields Garter star in the centre four sceptres featuring symbols for the three kingdoms, i.e. England (sceptre with a cross), Ireland (harp) and Scotland (thistle). *Light grey and blue iridescent highlights on the reverse, gem FDC and rare.*

\$2,500



2640

1887 Proof Half Crown, Victoria, 1837-1901. S-3924, ESC-2772, Davies 640 (R). 14.12g. Obverse - Joachim E. Boehm's Jubilee bust with small crown and veil, J.E.B. on truncation. Later common bust with 16 pearls to brooch. Reverse - Crowned shield with Garter and collar. *Slight gentle brown toning over brilliant fields, deep cameo, FDC and rare.*

\$2,000



2641

1887 Proof Florin, Victoria, 1837-1901. S-3925, ESC-2954, Davies 810? (R). 11.34g. Obverse - Joachim E. Boehm's Jubilee bust with small crown and veil, J.E.B. on truncation. Reverse - crowned cruciform shields Garter star in the centre four sceptres featuring symbols for the three kingdoms, i.e. England (sceptre with a cross), Ireland (harp) and Scotland (thistle). *Uneven blue toning, brilliant FDC and rare.*

\$1,500



2642

1887 Proof Shilling, Victoria, 1837-1901. S-3925, ESC-3138, Davies 982 (R). 5.65g. Obverse - Joachim E. Boehm's small Jubilee bust with small crown and veil, J.E.B. on truncation. Reverse - square topped crowned shield within the garter, the crown breaks through the garter. The loop on the Q in QUI (garter inscription) has a curved, looped tail. Die crack through the date, indicating a later use of the die. *Attractive toning, brilliant FDC and rare.*

\$1,000



2643

1887 Proof Sixpence, Victoria, 1837-1901. 1887, S-3928, ESC-3269, Davies 1150 (ER). 2.82g. Obverse - Joachim E. Boehm's small Jubilee bust with small crown and veil, J.E.B. below truncation. It has a flat, broad rim, the upward stroke of R letters, have serifs only on the left side. Reverse - square topped crowned shield within the garter, the crown breaks through the garter. The crown is unfilled, and no dot is present under the date. *Deeply toned brilliance with iridescent reverse, FDC and extremely rare.*

\$2,000



2644

1887 Proof Threepence, Victoria, 1837-1901. S-3931, ESC-3437, Davies 1331 (Dies 2 A) (S). 1.41g. Plain Edge Obverse - Joachim E. Boehm's small Jubilee bust with small crown and veil, plain truncation. The cross above the crown has a dot on top and one short diagonal line rising from each side. Reverse - Imperial crown above numeral 3, which splits the date; near the rim are two oak branches forming a wreath tied by a ribbon at the base. *Slight concave, toned brilliant FDC and scarce.*

\$600



2645

1887 Long Proof Set - case only, Victoria, 1837-1901. S-PS5, mid-20th C. reproduction rectangular shaped case red shagreen style leather covered timber presentation case. The lid has a stepped design and is stamped with the royal arms in gold leaf. Rectangular shaped case fitted with a brass push-button lock at the front. Inside comprises blue velvet roundels in a 4-4-3- pattern with white silk lining to the lid. *Extremely fine.*

\$200



2646

1887 Short Proof Set Case - Silver coins only, Victoria, 1837-1901. S-PS6 Crown to Threepence (7 coins). Contemporary shagreen style brown leather covered timber presentation case. The lid is plain except for a decorative gold line border. Square case fitted brass push-button lock at the front. The Interior has six blue velvet roundels surrounding a central one for the crown. Fitted with blue ribbon lifters and a plain white silk lining to the lid. Mintage 287 sets issued. *Good very fine and scarce.*

\$300



2647

1887 Short Proof Set - case only, Victoria, 1837-1901. S-PS6 mid-20th C. reproduction black leatherette covered metal presentation case. Rectangular shaped case fitted bronze clasps stamped with imperial crown centred with SPECIMEN COINS above and 1887 below. The Interior has blue velvet roundels in a 3-4 pattern fitted with dark blue ribbon lifters and a plain white silk lining to the lid. *Extremely fine.*

\$100



2648

1887 Proof Crown - best coin, Victoria, 1837-1901. S-3921, ESC-2586, L&S 74, Davies 480 (R). 28.31g. equivalent dies to the Five Sovereign though slightly larger. Obverse - Joachim E. Boehm's Jubilee bust with small crown and veil, J.E.B. on truncation. Reverse Benedetto Pistrucci's St George and the Dragon small B.P. in relief below right of exergue. *Gem iridescent brilliant proof FDC and rare, one of the finest known.*

\$6,000



2649

1887 Proof Double Florin (Four Shillings), Victoria, 1837-1901. S-3923, ESC-2698, L&S 98, Davies 541 (R). 22.53g. Obverse - Joachim E. Boehm's Jubilee bust with small crown and veil, J.E.B. on truncation. Reverse - Arabic 1 in date; Crowned cruciform shields Garter star in the centre four sceptres featuring symbols for the three kingdoms, i.e. England (sceptre with a cross), Ireland (harp) and Scotland (thistle). *Full iridescence both sides, FDC and rare.*

\$2,000



2650

1887 Proof Half Crown, Victoria, 1837-1901. S-3924, ESC-2772, Davies 640 (R). 14.11g. Obverse - Joachim E. Boehm's Jubilee bust with small crown and veil, J.E.B. on truncation. Later bust with 16 pearls to brooch. Reverse - crowned shield with Garter and collar. *Blue grey toned, brilliant FDC and rare.*

\$1,800



2651

1887 Proof Florin, Victoria, 1837-1901. S-3925, ESC-2954, Davies 810? (R). 11.26g. Obverse - Joachim E. Boehm's Jubilee bust with small crown and veil, J.E.B. on truncation. Reverse - crowned cruciform shields Garter star in the centre four sceptres featuring symbols for the three kingdoms, i.e. England (sceptre with a cross), Ireland (harp) and Scotland (thistle). *Light blue grey peripheral toning, brilliant FDC and rare.*

\$1,200



2652

1887 Proof Shilling, Victoria, 1837-1901. S-3925, ESC-3138, Davies 982 (R). 5.68g. Obverse - Joachim E. Boehm's small Jubilee bust with small crown and veil, J.E.B. on truncation. Reverse - Square topped crowned shield within the garter, the crown breaks through the garter. The loop on the Q in QUI (garter inscription) has a curved, looped tail. Die break present through date. *Except for the obverse fields, a beautifully toned brilliant proof, FDC and rare.*

\$800



2653

1887 Proof Sixpence, Victoria, 1837-1901. S-3928, ESC-3268, Davies 1150 (ER). 2.78g. Obverse - Joachim E. Boehm's small Jubilee bust with small crown and veil, J.E.B. on truncation. Flat broad rim, the upward stroke of R letters have serifs on the left side only. Reverse - Square topped crowned shield within the garter, the crown breaks through the garter. *Slightly concave, beautifully toned, FDC and extremely rare.*

\$2,000



2654

1887 Proof Threepence, Victoria, 1837-1901. S-3931, ESC-3437, Davies 1330? (S). 1.42g. Plain Edge. Obverse - Joachim E. Boehm's small Jubilee bust with small crown and veil, Plain truncation. The cross above the crown has a dot on top and one short diagonal line rising from each side. Reverse - Imperial crown above numeral 3, which splits the date; near the rim are two oak branches forming a wreath tied by a ribbon at the base. *Slightly concave, dark brilliant blue toning, brilliant FDC and scarce.*

\$800

1887 SHORT PROOF SET 2 - Silver coins only Victoria, 1837-1901. 1887, S-PS6 Crown to Threepence (7 coins) Mintage 287 sets issued.



2655

1887 Proof Crown - rare die combination, Victoria, 1837-1901. S-3921, ESC-2586, L&S 74, Davies 480 (R). 28.14g. Obverse - Joachim E. Boehm's Jubilee bust with small crown and veil, rare variety where the J.E.B. initials are partially off the truncation. Reverse - Benedetto Pistrucci's St George and the Dragon small distinct B.P. in relief below right of the exergue. The 1 in date has a flat top compared to the more common stepped top. *Untoned, brilliant cameo, FDC and rare.*

\$4,000



2656

1887 Proof Double Florin (Four Shillings), Victoria, 1837-1901. S-3923, ESC-2698, L&S 98, Davies 541 (R). 22.70g. Obverse - Joachim E. Boehm's Jubilee bust with small crown and veil, J.E.B. on truncation. Reverse - Arabic 1 in date; Crowned cruciform shields Garter star in the centre four sceptres featuring symbols for the three kingdoms, i.e. England (sceptre with a cross), Ireland (harp) and Scotland (thistle). *Lightest of tone, reverse slightly milky, brilliant FDC and rare.*

\$1,800



2657

1887 Proof Half Crown, Victoria, 1837-1901. S-3924, ESC-2772, Davies 640 (R). 14.07g. Obverse - Joachim E. Boehm's Jubilee bust with small crown and veil, J.E.B. on truncation. Later bust with 16 pearls to brooch. Reverse - crowned shield with Garter and collar. *Beautiful dark iridescent toning, gem FDC and rare.*

\$2,000



2658

1887 Proof Florin, Victoria, 1837-1901. 1887, S-3925, ESC-2954, Davies 810? (R). 11.26g. Obverse - Joachim E. Boehm's Jubilee bust with small crown and veil, J.E.B. on truncation. Reverse - crowned cruciform shields Garter star in the centre four sceptres featuring symbols for the three kingdoms, i.e. England (sceptre with a cross), Ireland (harp) and Scotland (thistle). *Brilliant iridescent toning, FDC and rare.*

\$1,500



2659

1887 Proof Shilling, Victoria, 1837-1901. S-3925, ESC-3138, Davies 982 (R). 5.63g. Obverse - Joachim E. Boehm's small Jubilee bust with small crown and veil, J.E.B. on truncation. Reverse - square topped crowned shield within garter, the crown breaks through the garter. The loop on the Q in QUI (garter inscription) has a curved looped tail. Early strike as no die break present through date. *Attractively toned, FDC and rare.*

\$800



2660

1887 Proof Sixpence, Victoria, 1837-1901. S-3928, ESC-3268, Davies 1150 (ER). 2.93g. Obverse - Joachim E. Boehm's small Jubilee bust with small crown and veil, J.E.B. on truncation. Raised wire rim, rare legend variety where the upward stroke of R letters have serifs on both sides. Reverse - square topped crowned shield within garter, the crown breaks through the garter. *Light grey blue tone, FDC and extremely rare.*

\$1,000



2661

1887 Proof Threepence, Victoria, 1837-1901. S-3931, ESC-3437, Davies 1330? (S). 1.41g. Plain edge. Obverse - Joachim E. Boehm's small Jubilee bust with small crown and veil, plain truncation. The cross above the crown has a dot on top and one short diagonal line rising from each side. Reverse - Imperial crown above numeral 3, which splits the date; near the rim are two oak branches forming a wreath tied by a ribbon at the base. *Brilliant dark iridescent tone, proof FDC.*

\$400



2662

1887 Regular Maundy Set with case, Victoria, 1837-1901. S-3916, ESC-3544, Davies-1449 (S), young Head. Plain edge. The Maundy ceremony was held before the new Jubilee bust was released. Obverse - second young head (no W.W.). Four coins: 4d, 3d, 2d and 1d. *Case very fine; coin untuned, uncirculated.* (4)

\$500



2663

1887 Regular Maundy Set with case, Victoria, 1837-1901. S-3916, ESC-3544, Davies-1449 (S), young head. Plain edge. Obverse - second young head (no W.W.). Four coins: 4d, 3d, 2d and 1d. Encapsulated NGC 4d MS 64, 3d MS 65, 2d MS 65 and 1d MS 65. *Case very fine; coins dull, dark toned uncirculated.* (4)

\$500



2664

1888 Regular Maundy Set with case - 1st year with Jubilee bust, This set was included in the collection as it represents the first year of new designs for the Maundy series, Victoria, 1837-1901. S-3943, ESC-3551, Davies-1470 (C) Plain edge. Obverse - Jubilee bust. Reverse - updated version of Merlen's oak leaf surrounding crowned value design introduced in 1822. Designed and engraved by Leonard Charles Wyon, it is still used today. The Imperial crown has replaced the St Edwards crown and the Arabic numeral 2 replaced with a more squared version. Four coins: 4d 1.90g, 3d 1.42g, 2d 0.93g and 1d 0.46g. *Grey brown toned, uncirculated.* (4)

\$350



2665

1887 Proof Double Florin (Four Shillings), Rare Top of Crown to Gap variety, Victoria, 1837-1901. 1887, S-3922, ESC-2696, L&S 97, Davies 540 (R). Encapsulated by PCGS as PR66 CAM. Obverse - Joachim E. Boehm's Jubilee bust with small crown and veil, J.E.B. on truncation. Rare obverse variety where the cross on top of the crown points to a gap in the rim denticles. Reverse - Roman I in date; crowned cruciform shields Garter star in the centre four sceptres featuring symbols for the three kingdoms, i.e. England (sceptre with a cross), Ireland (harp) and Scotland (thistle). *Attractive grey brown toning, brilliant FDC and rare.*

\$3,000



2666

1887 Proof Double Florin (Four Shillings), Rare Close 7 in Date variety, Victoria, 1837-1901. S-3923, ESC-2698, L&S 98, Davies 541 (R). Encapsulated PCGS as PR66 CAM. Obverse - Joachim E. Boehm's Jubilee bust with small crown and veil, J.E.B. on truncation. Reverse - Arabic 1 in date; close 7 in date. **Unlike the Roman I in date version where they are all close 7.** Crowned cruciform shields Garter star in the centre four sceptres featuring symbols for the three kingdoms, i.e. England (sceptre with a cross), Ireland (harp) and Scotland (thistle). *Golden grey brown toned brilliance, gem FDC and rare.*

\$3,000



2667

1887 Proof Half Crown, Victoria, 1837-1901. S-3924, ESC-2772, Davies 640 (S). Encapsulated NGC PF66 Ultra Cameo Obverse - Joachim E. Boehm's Jubilee bust with small crown and veil, J.E.B. on truncation. Later bust with 16 pearls to brooch. Reverse - crowned shield with Garter and collar. *Light grey toning, deep cameo, gem FDC and scarce.*

\$2,000



2668

1887 Pattern Florin - Small Bust, Victoria, 1837-1901. S-3925, ESC-2950, Davies unlisted (R7). 11.30g. Obverse - Joachim E. Boehm's Jubilee bust is smaller than standard proof, with eight beads on the left arch in the crown. I.E.B. instead of J.E.B on truncation. Reverse - crowned cruciform shields Garter star in the centre four sceptres featuring symbols for the three kingdoms, i.e. England (sceptre with a cross), Ireland (harp) and Scotland (thistle). *Deep golden blue brown iridescence, FDC and extremely rare.*

\$4,000



2669

1887 Proof Shilling, Extremely rare reverse - Loopless Tail variety, Victoria, 1837-1901. S-3925, ESC-unlisted, Davies 980 Dies (1 A -Ext. Rare). 5.61g. Obverse - Joachim E. Boehm's small Jubilee bust with small crown and veil, J.E.B. on truncation. Reverse - square topped crowned shield within the garter, the crown breaks through the garter. The loop on the Q in QUI (garter inscription) has a loopless tail. *Gem, beautifully toned, brilliant FDC and extremely rare.*

\$2,000

1893 OLD HEAD PROOF SET

Queen Victoria made it known in 1889 that she disliked the new coinage (Jubilee) and suggested a new one be struck. The Mint approached several modellers and took on board the criticisms levelled at the Jubilee coins. The Mints production of commercial proof sets was continued for the new coinage suggesting its experience with the Jubilee sets was sufficiently positive. The Mint issued a pamphlet stating specimen coins of the new designs would be made direct to the public at a price 25% above the denominational value of the coins. Cases for the sets of coins would also be supplied if required. The ten coin long set sold for 11 pounds 6 shillings with a case costing an additional 12 shillings 6 pence. The Silver set sold for 14 shillings and two pence, with a case costing an extra 10 shillings 6 pence. This additional impost explains why the short set cases are so rare, given they cost almost as much as the coins themselves. Obverse - Veiled head of Queen Victoria facing left with modellers initials T.B . (Thomas Brock) below truncation. The effigy is now affectionately known as the old head. The mature queen wears a coronet (tiara) half covered by a veil that drapes in folds over the left shoulder and is cut off at the truncation. In addition, Queen Victoria is adorned with a pendant attached to a pearl necklace, a matching drop earring and the Riband (sash) with Garter Star.

This set was the first to introduce the Empress of India into the queen's royal titles. George William De Saulles engraved the dies from the models supplied by the various artists/modellers to form the master tools for this old head series. Legend for 5, 2, 1 & « Sovereigns, Crown, Florin, Shilling, Sixpence, Threepence & Maundy: VICTORIA . DEI . GRA . tia BRITT . annia REGINA . FID . ei DEF . ensor IND . ia IMP . erator Translation Victoria by the Grace of God, Queen of Britain, Defender of the Faith, Empress of India On the Half Crown, the legend was shortened to accommodate the use of those letters on the heraldic reverse. Half Crown, - VICTORIA . DEI . GRA . BRITT . REG Edge is straight-grained unless specified; reverse die axis struck en Medaille. The borders on the two sides of the 5, 2, 1, «, Sovereigns and Crown coins are different, with the obverse of these coins having denticles adjacent to the rim while the reverse has rectangular slots confined by an inner raised circle. All the other denominations have denticles on both sides. No bronze or base metal coins were issued as part of these proof sets.



2670

1893 Long Proof Set Case - Gold and Silver coins, Victoria, 1837-1901. S-PS7, Five Sovereigns to Threepence (10 coins). Official dark red shagreen style leather covered timber presentation case. The case is slightly smaller than the 1887 version in accord with the absence of a double florin. It shares the same 1887 stepped lid design and is stamped with the royal arms in gold leaf. The lid has an incuse perimeter line in the leather at the top of the step with a similar line, but this time in gold at its base. The rectangular-shaped case is fitted with a brass push-button lock at the front. Inside comprises dark blue velvet roundels in a 4-3-3 pattern with white silk lining to the lid. Mintage approximately 650 sets struck. The set is entirely original, with the gold displaying matching wispy film derived from long time storage in the case. The silver coins exhibit matching multicoloured rainbow tones. *Good very fine.*

\$600



2671

1893 Proof Five Sovereigns, Victoria, 1837-1901. S-3872, W&R 287 (Scarce) L&S 108. 39.80g. Edge straight-grained. Reverse - Benedetto Pistrucci's St George and the Dragon small B.P. in relief below right of exergue. *Deep cameo, minimal obverse field hairlines, virtually FDC and scarce.*

\$45,000



2672

1893 Proof Two Sovereigns, Victoria, 1837-1901. S-3873, W&R 294 (Scarce). 15.93g. Edge straight-grained. Reverse - Benedetto Pistrucci's St George and the Dragon, small B.P. in relief below right of exergue. *Full deep cameo, only presentation case impression noticeable fields, FDC and scarce.*

\$15,000



2673

1893 Proof Sovereign, Victoria, 1837-1901. S-3874, W&R 341 (Scarce). 7.94g. Edge straight-grained. Reverse - Benedetto Pistrucci's St George and the Dragon, WWP in relief on exergue below broken lance, B.P. in relief below right of exergue. *Full deep cameo, only presentation case impression noticeable on fields, FDC and scarce.*

\$8,000



2674

1893 Proof Half Sovereign, Victoria, 1837-1901. S-3878, W&R 363 (Scarce). 3.96g. Edge straight-grained. Reverse - Benedetto Pistrucci's St George and the Dragon, no B.P. in relief below right of exergue. *Deep cameo, one hairline on obverse, otherwise FDC and scarce.*

\$5,000



2675

1893 Proof Crown, Victoria, 1837-1901. S-3937, ESC-2594, L&S 109, Davies 480 (S). 28.23g. Lettered Edge, DECUS ET TUTAMEN ANNO REGNI LVI in relief equivalent dies to the Five Sovereign though slightly larger. Reverse - Benedetto Pistrucci's St George and the Dragon small B.P. in relief below right of the exergue. This die variety reveals the horse's mouth has teeth. *Iridescent toned, brilliant FDC and scarce.*

\$5,000



2676

1893 Proof Half Crown, Victoria, 1837-1901. S-3938, ESC-2779, Davies 663 (Dies 2 B) (S). 14.10g. Edge straight-grained. Reverse - a crowned spade-shaped Royal shield of Arms with Order of the Garter suspending a miniature St George and the Dragon pendant. The ribboned shield partly obscures the Collar of the Order of the Garter, whose design is taken from the 1887 half-crown. Outside this is a decorative beaded circle above which is the legend . FID . DEF . IND . IMP . The base reads HALF 18 (pendant) 93 CROWN. *Attractive iridescent brilliance, FDC and scarce.*

\$1,500



2677

1893 Proof Florin, Victoria, 1837-1901. S-3939, ESC-2963, Davies 831 (Dies 2 A) (R). 11.31g. Edge straight-grained. Reverse - three shields representing the Royal Arms within the the Garter. The shields are separated by floral emblems for the three kingdoms and are fixed by two crossed sceptres and topped with the Imperial crown. A beaded circle supports the outer legend, which reads . ONE . FLORIN (crown and sceptres) TWO . SHILLINGS . 1893 is split the at the base by the garter. *Light iridescence, brilliant FDC and rare.*

\$1,200



2678

1893 Proof Shilling, Victoria, 1837-1901. S-3940, ESC-3155, Davies 1011 (Dies 2 A) (R). 5.65g. Edge straight-grained. Reverse - heraldic design similar to the florin with the three shields now individually crowned within the garter with floral emblems in between. Crosses form the stops in the legend . + ONE + SHILLING + .and are made from five beads, and the lower date + 18 (garter) 93 +. *Grey with some red brown brilliance, FDC and rare.*

\$1,000



2679

1893 Proof Sixpence, Victoria, 1837-1901. S-3941, ESC-3286, Davies 1181 Dies 2 A. 2.83g. Edge straight-grained. Reverse - the Mint retained the modified Merlen "value within the wreath" design which rapidly replaced the square-topped shield in the Garter design used for the 1887 sets. Imperial Crown above SIX PENCE surrounded by a spray of laurel and oak leaves tied by a ribbon into a wreath, with 1893 below. *Semi-cameo, iridescent tone, brilliant FDC and scarce.*

\$600



2680

1893 Proof Threepence, Victoria, 1837-1901. 1893, S-3942, ESC-3445, Davies 1350 (Dies 2 A) (S). 1.41g. Plain Edge. Reverse - modified version of Merlen's original Maundy design. *Now with Imperial crown above numeral 3 (mark of value), which splits the date; near the rim, two oak branches form a wreath tied by a ribbon at the base Slight iridescence, FDC and scarce.*

\$500



2681

1893 Short Proof Set Case - Silver coins only, Victoria, 1837-1901. S-PS8 Crown to Threepence (6 coins). Official dark red shagreen style leather covered timber presentation case. The case is smaller than the long set version in accord with the absence of the four gold coins. It shares the same stepped lid design and is stamped with the royal arms in gold leaf. The lid has an incuse perimeter line in the leather at the top of the step with a similar line but this time in gold at its base. The rectangular-shaped case is fitted with a brass push-button lock at the front. Inside comprises dark blue velvet roundels in a 3-3 pattern with white silk lining to the lid. Mintage 556 sets struck. *Very fine and rare.*

\$400



2682

1893 Proof Crown, Victoria, 1837-1901. S-3937, ESC-2594, L&S 109, Davies 480 (S). 27.96g. Lettered Edge, DECUS ET TUTAMEN ANNO REGNI LVI in relief equivalent dies to the Five Sovereign though slightly larger. Reverse - Benedetto Pistrucci's St George and the Dragon small B.P. in relief below right of exergue. This die variety reveals the horse's mouth is toothless. *Contrasting blue grey brilliant tone, FDC and scarce.*

\$4,500



2683

1893 Proof Half Crown, Victoria, 1837-1901. S-3938, ESC-2779, Davies 663 (Dies 2 B) (S). 14.21g. Edge straight-grained. Reverse - a crowned spade-shaped Royal shield of Arms with Order of the Garter suspending a miniature St George and the Dragon pendant. The ribboned shield partly obscures the Collar of the Order of the Garter, whose design is taken from the 1887 half-crown. Outside this is a decorative beaded circle above which is the legend . FID . DEF . IND . IMP . The base reads HALF 18 (pendant) 93 CROWN. *Light tone, brilliant FDC and scarce.*

\$1,500



2684

1893 Proof Florin, Victoria, 1837-1901. S-3939, ESC-2963, Davies 831 (Dies 2 A) (R). 11.30g. Edge straight-grained. Reverse - three shields representing the Royal Arms within the Garter. The shields are separated by floral emblems for the three kingdoms and are fixed by two crossed sceptres and topped with the Imperial crown. A beaded circle supports the outer legend, which reads . ONE . FLORIN (crown and sceptres) TWO . SHILLINGS . 1893 is split the at the base by the garter. *Dark blue grey brilliance, FDC and rare.*

\$1,500



2685

1893 Proof Shilling, Victoria, 1837-1901. S-3940, ESC-3155, Davies 1011 (Dies 2 A) (R). 5.62g. Edge straight-grained. Reverse - heraldic design similar to the florin with the three shields now individually crowned within the garter with floral emblems in between. Crosses form the stops in the legend . + ONE + SHILLING + .and are made from five beads, and the lower date + 18 (garter) 93 + . *Attractive blue grey brilliance, FDC and rare.*

\$1,000



2686

1893 Proof Sixpence, Victoria, 1837-1901. S-3941, ESC-3286, Davies 1181 Dies 2 A. 2.82g. Edge straight-grained. Reverse - the Mint retained the modified Merlen "value within the wreath" design which rapidly replaced the square-topped shield in the Garter design used for the 1887 sets. Imperial Crown above SIX PENCE surrounded by a spray of laurel and oak leaves tied by a ribbon into a wreath, with 1893 below. *Blue grey toned brilliance, FDC and scarce.*

\$600



2687

1893 Proof Threepence, Victoria, 1837-1901. S-3942, ESC-3445, Davies 1350 (Dies 2 A) (S). 1.41g. Plain edge. Reverse - Imperial crown above numeral 3 (mark of value) which splits the date; near the rim two oak branches form a wreath tied by a ribbon at the base. *Dark blue grey brilliance, FDC and scarce.*

\$600



2688

1893 Regular Maundy Set, Victoria, 1837-1901. S-3943, ESC-3551. (C) Plain edge. Reverse - Merlen's original design modified with Imperial crown above numeral value, which splits the date; near the rim, two oak branches form a wreath tied by a ribbon at the base. 4d 1.89g, 3d 1.42g, 2d 0.93g and 1d 0.47g. *Well matched, toned brilliance, choice uncirculated. (4)*

\$400



2689

1893 Regular Maundy Set, , Victoria, 1837-1901. S-3943, ESC-3551. (C) Plain edge. Reverse - Merlen's original design modified with Imperial crown above numeral value, which splits the date; near the rim, two oak branches form a wreath tied by a ribbon at the base. Encapsulated by NGC 4d MS 65, 3d MS 66, 2d MS 65 and 1d MS 65. *Dark tone, uncirculated.* (4)

\$300



2690

1893 Proof Shilling, Obverse Die Variety, Victoria, 1837-1901. S-3940, ESC-3155, Davies 1011 (Dies 1 A) (VR). 5.64g. Edge straight-grained. Obverse - old veiled bust by Thomas Brock with veil partially covering a coronet, T.B. below truncation. The legend has the 1st I of VICTORIA to denticle. Reverse - heraldic design similar to the florin with the three shields now individually crowned within the garter with floral emblems in between. Crosses form the stops in the legend . + ONE + SHILLING + .and are made from five beads, and the lower date + 18 (garter) 93 + . *Lightly toned, brilliant semi cameo, FDC and very rare.*

\$1,200



2691

1893 Proof Shilling, Victoria, 1837-1901. S-3940, ESC-3155, Davies 1011 (Dies 2 A) (R). 5.66g. Edge straight-grained. Obverse - Old veiled bust by Thomas Brock with veil partially covering a coronet, T.B. below truncation. Large letters 1st I of VICTORIA to gap between denticles. Reverse - Heraldic design similar to the florin with the three shields now individually crowned within the garter with floral emblems in between. Crosses form the stops in the legend . + ONE + SHILLING + .and are made from five beads, and the lower date + 18 (garter) 93 + . *Beautiful golden iridescence, gem FDC and rare.*

\$1,200



2692

1893 Proof Sixpence, Victoria, 1837-1901. S-3941, ESC-3286, Davies 1181 Dies 2 A. 2.82g. Edge straight-grained. Reverse - the Mint retained the modified Merlen "value within the wreath" design which rapidly replaced the square-topped shield in the Garter design used for the 1887 sets. Imperial Crown above SIX PENCE surrounded by a spray of laurel and oak leaves tied by a ribbon into a wreath, with 1893 below. *Grey and olive brilliance, FDC and scarce.*

\$600



2693

1893 Proof Threepence, Victoria, 1837-1901. S-3942, ESC-3445, Davies 1350 (Dies 2 A) (S). 1.41g. Plain edge. Reverse - modified version of Merlen's original Maundy design. Now with Imperial crown above numeral 3 (mark of value), which splits the date; near the rim, two oak branches form a wreath tied by a ribbon at the base. *Blue grey brilliance, FDC and scarce.*

\$600



2694

Diamond Jubilee of Queen Victoria, 1897, medallion in silver (56mm) 84.22g by G.W. de Saulles after T.Brock/W.Wyon (BHM 3506; Eimer 1817) in mint case of issue. *Attractively toned uncirculated.*

\$300

The official Royal Mint issue.



2695

Diamond Jubilee of Queen Victoria, 1897, medallion in bronze (56mm) 76.41g by G.W.de Saulles after T.Brock/W.Wyon (BHM 3506; Eimer 1817a) with case of issue. *Attractive light red brown patina, uncirculated.*

\$100



Edward VII 1901 - 1910



2696

Coronation of Edward VII, 1902, medallion in silver (56mm) 85.82g by G.W.de Saulles (BHM 3737; Eimer 1871a) with mint case of issue. *Light grey tone uncirculated.*

\$400

The official Royal Mint issue.



2697

Coronation of Edward VII, 1902, medallion in bronze (56mm) 81.14g by G.W.de Saulles (BHM 3737; Eimer 1871a) with mint case of issue. *Light brown and golden toning, uncirculated.*

\$100

1902 CORONATION PROOF SET

Edward VII, 1901-1910. This set is the only one whose coins all exhibit a matte finish. A matte finish became a global fashion for proof coins and medals around the turn of the 19-20th C. De Saulles helped push for this finish, which was contemporary French practice. There is conjecture on how this finish was achieved e.g. by sandblasting the dies, even individual coins. However, microscopic examination of their finish reveals straight raised lines imparted by a steel brush and random orientated linear crystalline texture consistent with the hubs' or dies' deeper acid etching. This acid etch reveals the microcrystalline metallurgical structure of the tool steel used. Additionally, the use of acid as part of the cleaning treatments afforded the planchets and coins is also supported by swirling brush like tone lines and crackled toning exhibited by many of the coins that have escaped any post mint efforts to improve their appearance. The moneyers went to considerable effort for the proofs to leave the Mint with a bright matte finish. The coins did not ship in Moroccan leather presentation cases; instead, they were posted in much more protective cardboard boxes, which minimised the risk of coins coming loose during handling in the mail.

Obverse - bare head of King Edward VII facing right with initials D E S . (George William De Saulles) below truncation. George De Saulles modelled and engraved the bust and engraved the very well-regarded new reverse (Britannia) design for the florin. Legend for 5 & 2 Sovereign, Crown, Sixpence: EDWARDUS VII DEI GRA : BRITT : OMN : REX FID : DEF : IND : IMP : Translation: Edward 7th, by the Grace of God, King of all the Britains, Defender of the Faith, Emperor of India On other coins the legend was shortened to varying degrees to accommodate either smaller size or use of the lettering on the reverse 1 & « Sovereign, florin, Maundy - EDWARDUS VII D: G: BRITT : OMN : REX F: D: IND : IMP : « Crown, shilling - EDWARDUS VII DEI GRA: BRITT: OMN: REX. Edge is straight-grained unless specified; reverse die axis struck en Medaille. As found for the 1893 set, the borders on the 5, 2, 1, «, Sovereigns and Crown are different, with the obverse of these coins having denticles adjacent to the rim while St George and the dragon reverses have rectangular slots confined by an inner raised circle. The Half-Crown, Florin and Shilling have plain borders. The Sixpence and Maundy denominations have denticles on both sides.



2698

1902 Proof Long Set Case, Edward VII, 1901-1910. S-PS9 Coronation. Long set (matt finish 13 coins) comprising Five Sovereigns to Maundy Penny. This is the first official proof set to include the Maundy which last appeared in the 1853 "from the engraver" set. Given the regular 3d and Maundy 3d have the same designs these coins are not duplicated here. Official red Moroccan leather presentation case, this includes a piece of "TarnO" tissue supplied by H.N. Smith described as reducing the risk of these coins being tarnished. Case with white silk and blue velvet interior, lid stamped in gold with the imperial crown between SPECIMEN COINS at top and 1902 at bottom. With very rare white cardboard shipper box. Mintage 8,066 sets struck. No bronze or base metal coins were issued as part of these proof sets. *Very fine.* (2)

\$200



2699

1902 Proof Five Sovereigns, Edward VII, 1901-1910. S-3965, W&R 404, L&S 1. (N) 39.88g. low rim. Reverse - Benedetto Pistrucci's St George and the Dragon small B.P. in relief below right of exergue, which contains the date. *Has been rubbed giving some coppery tone, nearly FDC.*

\$7,000



2700

1902 Proof Two Sovereigns, Edward VII, 1901-1910. S-3968, W&R 406 (N). 15.97g. Reverse - Benedetto Pistrucci's St George and the Dragon, small B.P. in relief below right of exergue. *Attractive mint bloom, FDC.*

\$3,500



2701

1902 Proof Sovereign, Edward VII, 1901-1910. S-3969, W&R 408 (N). 7.97g. Reverse - Benedetto Pistrucci's St George and the Dragon, script letters WWP in relief on the ground line below broken lance, B.P. in relief below right of exergue. *Has been lightly rubbed, nearly FDC.*

\$1,800



2702

1902 Proof Half Sovereign, Edward VII, 1901-1910. S-3974A, W&R 411 (N). 4.01g. Reverse - Benedetto Pistrucci's St George and the Dragon, as per the 1893 issue, his initials do not appear on the coin's exergue. *FDC.*

\$900



2703

1902 Proof Crown, Edward VII, 1901-1910. S-3979, ESC-3562, L&S 2, Davies 1500 (N). 28.27g. Large lettered edge DECUS ET TUTAMEN ANNO REGNI II in relief, equivalent dies to the Five Sovereign though slightly larger. Differences in the microcrystalline texture in the fields support it being struck from a different die pair to the crown - lot 2720. Reverse - Benedetto Pistrucci's St George and the Dragon small B.P. in relief below right of the exergue. *Medium even tone, FDC.*

\$900



2704

1902 Proof Half Crown, Edward VII, 1901-1910. S-3980, ESC-3568, Davies 1510 (N). 14.08g. Reverse - a central crowned Shield of the Royal Arms scalloped and cusped with Garter and Collar. The miniature St George and dragon pendant at the base of the garter is replaced with floral decoration. There is a beaded circle between the Garter and legend, finishing with a plain border. *Light white silver colour, FDC.*

\$500



2705

1902 Proof Florin, Edward VII, 1901-1910. S-3981, ESC-3578, Davies 1530 (N). 11.27g. Reverse - De Saulles helmed and cloaked figure of Britannia with trident and shield bearing the union flag. She is looking right and standing on the prow of a small boat surrounded by waves. Legend interrupted by the trident and helmet reads ONE FLORIN TWO SHILLINGS with the date underneath in relief on the boat's prow. The standing figure of Britannia was drawn by De Saulles from life using the daughter of the then Master of the Mint as his model. *Light tone, FDC.*

\$400



2706

1902 Proof Shilling, Edward VII, 1901-1910. S-3982, ESC-3588, Davies 1550 (N). 5.62g. Reverse - this is very similar to Merlen's third reverse GEORGE IV shilling. Lion passant regardant standing upon the Imperial Crown with a decorated inner circle between the legend and plain border. No designer's initials. The legend reads FID: DEF: IND: IMP: with the date divided by the crown and ONE SHILLING below the decorative inner circle. *Toned, FDC.*

\$300



2707

1902 Proof Sixpence, Edward VII, 1901-1910. S-3983, ESC-3598, Davies 170 (N). 2.80g. Reverse - the Mint retained the modified Merlen "value within the wreath" design for this issue. Imperial Crown above SIX PENCE surrounded by a spray of laurel and oak leaves tied by a ribbon into a wreath, with 1902 below. *Toned, FDC.*

\$200



2708

1902 Proof Maundy Set, Edward VII, 1901-1910. S-3985, ESC-3608, Davies 1610 (N). 4 coins with plain edge. 4d 1.86g, 3d 1.40g, 2d 0.94g and 1d 0.47g. Reverse - Imperial crown above numeral value, which splits the date; near the rim, two oak branches form a wreath tied by a ribbon at the base. This set is atypical for the series in that it is readily distinguished from the regular maundy of the year due to its enhanced matte finish. *The penny dark grey toned, others untoned, nearly FDC.* (4)

\$400



2709

1902 Proof Gold Set Case, Edward VII, 1901-1910. Coronation. Five Sovereigns to half-sovereign. Gold only set (matte finish four coins). Custom red Moroccan leather presentation case stamped in gold with EDWARD VII. Spink coin dealers ordered proofs direct from the Royal Mint and on-sold these in their custom cases. *Very fine and rare.*

\$300



2710

1902 Proof Five Sovereigns, Edward VII, 1901-1910. S-3965, W&R 404, L&S 1. (N) 39.87g. Medium rim. Reverse - Benedetto Pistrucci's St George and the Dragon small B.P. in relief below right of exergue, which contains the date. *Unmarked, original matt finish intact, FDC.*

\$8,000



2711

1902 Proof Two Sovereigns, Edward VII, 1901-1910. S-3968, W&R 406 (N). 15.94g. Reverse - Benedetto Pistrucci's St George and the Dragon, small B.P. in relief below right of exergue. *Slightly toned, FDC.*
\$3,500



2712

1902 Proof Sovereign, Edward VII, 1901-1910. S-3969, W&R 408 (N). 7.93g. Reverse - Benedetto Pistrucci's St George and the Dragon, script letters WWP in relief on the ground line below broken lance, B.P. in relief below right of exergue. *Lightly toned, FDC.*
\$1,800



2713

1902 Proof Half Sovereign, Edward VII, 1901-1910. S-3974A, W&R 411 (N). 3.96g. Reverse - Benedetto Pistrucci's St George and the Dragon, as per the 1893 issue, his initials do not appear on the coin's exergue. *Has been handled, slightest bend and miniscule rim nick, nearly FDC.*
\$700



2714

1902 Proof Set Case, Official long set red Moroccan leather presentation case (no coins) with white silk and blue velvet interior. Roundels in 4-5-4 pattern, lid stamped in gold with the imperial crown between SPECIMEN COINS at top and 1902 at the bottom. *Good very fine.*

\$250



2715

1902 Proof Set Case, Mid-20thC. Long set red leatherette covered custom metal case (no coins) bronze clasps stamped with imperial crown centred with SPECIMEN COINS above and 1902 below. The Interior has blue velvet roundels in a 4-4-5 pattern fitted with black ribbon lifters and a plain white silk lining to the lid. *Extremely fine.*

\$100



2716

1902 Proof Five Sovereigns, Edward VII, 1901-1910. S-3965, W&R 404, L&S 1. (N) 39.73g. High rims - the Royal Mint must have experimented with the matte five sovereign dies to improve their strike behaviour and quality. This resulted in variations in the height of the rims on these coins. Reverse - Benedetto Pistrucci's St George and the Dragon small B.P. in relief below right of exergue, which contains the date. *Well struck and unmarked and not rubbed, thus FDC.*

\$8,000



lot2717 part (next page)



2717

1902 Proof Short Set Cases, Edward VII, 1901-1910. S-PS10 Coronation. Short set Sovereign to Maundy Penny. (matt finish 11 coins). Official red Moroccan leather presentation case with white silk and blue velvet interior. Roundels in 4-3-4 pattern, lid stamped in gold with the imperial crown between SPECIMEN COINS at top and 1902 at the bottom. With very scarce red cardboard shipper box (white interior) tied with beige laces. Mintage 7,057 sets struck. *Good very fine; very fine; fine.* (3)

\$400



2718

1902 Proof Sovereign, Edward VII, 1901-1910. S-3969, W&R 408 (N). 7.94g. Reverse - Benedetto Pistrucci's St George and the Dragon, script letters WWP in relief on ground line below broken lance, B.P. in relief below right of exergue. *Original surface, FDC.*

\$2,000



2719

1902 Proof Half Sovereign, Edward VII, 1901-1910. S-3974A, W&R 411 (N). 3.98g. Reverse - Benedetto Pistrucci's St George and the Dragon, as per the 1893 issue, his initials do not appear on the coin's exergue. *FDC*.

\$1,000



2720

1902 Proof Crown, Edward VII, 1901-1910. S-3979, ESC-3562, L&S 2, Davies 1500 (N). 28.23g. Large lettered edge DECUS ET TUTAMEN ANNO REGNI II in relief, equivalent dies to the Five Sovereign though slightly larger - type 1 Reverse - Benedetto Pistrucci's St George and the Dragon small B.P. in relief below right of exergue. *Uneven blotchy tone, nearly FDC*.

\$750



2721

1902 Proof Half Crown, Edward VII, 1901-1910. S-3980, ESC-3568, Davies 1510 (N). 14.08g. Reverse - A central crowned Shield of the Royal Arms scalloped and cusped with Garter and Collar. The miniature St George and dragon pendant at the base of the garter is replaced with floral decoration. There is a beaded circle between the Garter and legend, finishing with a plain border. *Rubbed obverse, nearly FDC/FDC*.

\$400



2722

1902 Proof Florin, Edward VII, 1901-1910. S-3981, ESC-3578, Davies 1530 (N). 11.30g. Reverse - De Saulles helmed and cloaked figure of Britannia with trident and shield bearing the union flag. She is looking right and standing on the prow of a small boat surrounded by waves. Legend interrupted by the trident and helmet reads ONE FLORIN TWO SHILLINGS with the date underneath in relief on the boat's prow. The standing figure of Britannia was drawn by De Saulles from life using the daughter of the then Master of the Mint as his model. *Dark toned, obverse, FDC*.

\$350



2723

1902 Proof Shilling, Edward VII, 1901-1910. S-3982, ESC-3588, Davies 1550 (N). 5.66g. Reverse - this is very similar to Merlen's third reverse George IV shilling. Lion passant regardant standing upon the Imperial Crown with a decorated inner circle between the legend and plain border. No designer's initials. The legend reads FID: DEF: IND: IMP: with the date divided by the crown and ONE SHILLING below the decorative inner circle. *Uneven light tone, FDC.*

\$300



2724

1902 Proof Sixpence, Edward VII, 1901-1910. S-3983, ESC-3598, Davies 170 (N). 2.81g. Reverse - the Mint retained the modified Merlen "value within the wreath" design for this issue. Imperial Crown above SIX PENCE surrounded by a spray of laurel and oak leaves tied by a ribbon into a wreath, with 1902 below. *Lightly toned, FDC.*

\$250



2725

1902 Proof Maundy Set, Edward VII, 1901-1910. S-3985, ESC-3608, Davies 1610 (N). 4 coins with plain edge. 4d 1.89g, 3d 1.41g, 2d 0.93g and 1d 0.45g. Reverse - Imperial crown above numeral value, which splits the date; near the rim, two oak branches form a wreath tied by a ribbon at the base. This set is atypical for the series in that it is readily distinguished from the regular maundy of the year due to its enhanced matte finish. *Well matched even grey toned, FDC. (4)*

\$350



George V 1910 - 1936



2726

Coronation of George V, 1911, medallion in bronze (51mm) 78.76g by B.Machennal (BHM 4022; Eimer 1922a) with smaller (than silver) case of issue. *Dull brown matt finish, uncirculated.*

\$100

The official Royal Mint issue.



2727

Coronation of George V, 1911, medallion in silver (51mm) 86.95g by B.Machennal (BHM 4022; Eimer 1922a) with case of issue. *Matt white silver finish light grey tone, uncirculated.*

\$300

1911 CORONATION PROOF SET

George V, 1910-1936. This set marks the return of the brilliant cameo frosted proof coin finish. However, it is also atypical because it does not include a crown. Despite being prestigious pieces, crowns were not favoured by the public due to their size, despite weighing the same as any other combination of silver to the value of 5 shillings! Obverse - Bare head of King George V facing left with engravers initials B.M. (Sir Bertram McKennal) on the truncation. Legend for 5 & 2 Sovereigns: GEORGIVS V DEI GRA: BRITT: OMN: REX FID: DEF: IND: IMP: Translation George 5th, by the Grace of God, King of all the Britains, Defender of the Faith, Emperor of India On other coins, the legend was shortened to varying degrees to accommodate either smaller size or the use of the lettering on the heraldic reverse 1 & « Sovereign, florin, Maundy - GEORGIVS V D. G. BRITT: OMN: REX F. D. IND: IMP: « Crown, shilling, sixpence - GEORGIVS V DEI GRA: BRITT: OMN: REX Edge is straight-grained unless specified; reverse die axis struck en Medaille. The decorative borders on the coins with St George and the dragon reverses, i.e. 5, 2, 1, and « Sovereigns, follow the pattern of previous issues. The obverse of these coins has denticles adjacent to the rim, while the reverse has rectangular slots confined by an inner raised circle. The borders on the other denominations have denticles on both sides. The reverse designs (unless noted) are George W. De Saulles designs modified by the Mint internal engraving team led by William H.J. Blakemore.



2728

1911 Proof Long Set Case, George V, 1910-1936. S-PS11 Coronation. Five Sovereigns to Maundy Penny. (12 coins) Official red Moroccan leather case. Mintage 2,812 sets issued. No bronze or base metal coins were issued as part of these proof sets. *Good very fine.*

\$200



2729

1911 Proof Five Sovereigns, George V, 1910-1936. S-3994, W&R 414, L&S 17. (S) 39.92g. Reverse - Benedetto Pistrucci's St George and the Dragon small B.P. in relief below right of exergue, which contains the date. *Miniscule obverse hairlines, choice, virtually FDC and scarce.*

\$25,000



2730

1911 Proof Two Sovereigns, George V, 1910-1936. S-3995, W&R 415 (S). 15.94g. Reverse - Benedetto Pistrucci's St George and the Dragon, small B.P. in relief below right of exergue. *Minor contact marks and hairlines, nearly FDC and scarce.*

\$5,000



2731

1911 Proof Sovereign, George V, 1910-1936. S-3996, W&R 416 (S). 7.98g. Reverse - Benedetto Pistrucci's St George and the Dragon, script letters WWP in relief on the ground line below broken lance, B.P. in relief below right of exergue. *Choice FDC and scarce.*

\$3,000



2732

1911 Proof Half Sovereign, George V, 1910-1936. S-4006, W&R 418 (S). 3.99g. Reverse - Benedetto Pistrucci's St George and the Dragon, for the first time in the proof set series, his initials B.P. appear on the right side of the coin's exergue. *Choice FDC with slight orange tone, scarce.*

\$1,250



2733

1911 Proof Half Crown, George V, 1910-1936. S-4011, ESC-3710, Davies 1661 (S). 14.10g. Chamfered rim. Reverse - it is almost identical to the 1902 design except for the absence of a beaded circle between the garter and legend (modified De Saulles design with no initials as performed by the Mint's engravers and die sinkers). A central crowned Shield of the Royal Arms scalloped and cusped with Garter and collar. The miniature St George and dragon pendant at the base of the garter is replaced with floral decoration. *Choice, attractive lightly toned FDC and scarce.*

\$900



2734

1911 Proof Florin, George V, 1910-1936. S-4012, ESC-3756, Davies 1730 Dies 1 A (R). 11.29g. I of GEORGIVS to denticle. Reverse - four crowned shields (Royal Arms) in a cross pattern at the centre is the Star of the Garter. Four sceptres divide the angle between the shields. No designer initials as an internal (Mint) design. The legend reads between crowns ONE Florin with the date below. *Blue grey toning, FDC.*

\$500



2735

1911 Proof Shilling, George V, 1910-1936. S-4013, ESC-3800, Davies 1792 Dies 3 A (S). 5.64g. Reverse - Lion passant regardant standing upon the Imperial Crown with a decorated inner circle between the legend and now a denticular border instead of the plain 1902 version. No designer's initials (internal Mint modification of De Saulles Royal Crest) a copy of the 1902 design. The legend reads FID: DEF: IND: IMP: with the date split by the crown and ONE SHILLING below the decorative inner circle. *Brilliant, attractive toning FDC.*

\$300



2736

1911 Proof Sixpence, George V, 1910-1936. S-4014, ESC-3872, Davies 1863 Dies 2 B (S). 2.82g. Reverse - A modified version of the DeSaulles shilling design of the Royal Crest. As per the 1911 shilling. The legend reads FID: DEF: IND: IMP: with the date split by the crown and SIXPENCE below. *Attractive dark blue grey toning, FDC.*

\$200



2737

1911 Proof Maundy Set, George V, 1910-1936. S-4016, ESC-3971, Davies 1970 (N). 4 coins with plain edge. 4d 1.88g, 3d 1.41g, 2d 0.94g and 1d 0.48g. Reverse - Merlen's modified design now with Imperial crown above numeral value, which splits the date; near the rim, two oak branches form a wreath tied by a ribbon at the base. *Last two toned, nearly FDC. (4)*

\$600



2738

1911 Proof Short Set Case, George V, 1910-1936. S-PS12 Coronation. Sovereign to Maundy Penny. (10 coins) Official red Moroccan leather case (wide with 3-3-4 roundel pattern). Mintage 952 sets issued. *Good very.*

\$200



2739

1911 Proof Sovereign, George V, 1910-1936. S-3996, W&R 416 (S). 7.98g. Reverse - Benedetto Pistrucci's St George and the Dragon, script letters WWP in relief on ground line below broken lance, B.P. in relief below right of exergue. *Contact marks, brilliant, nearly FDC.*

\$2,000



2740

1911 Proof Half Sovereign, George V, 1910-1936. S-4006, W&R 418 (S). 3.99g. Reverse - Benedetto Pistrucci's St George and the Dragon, for the first time in the proof set series, his initials B.P. appear on the right side of the coin's exergue. *Minimal hairlines, nearly FDC and scarce.*

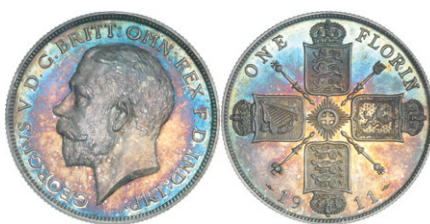
\$1,200



2741

1911 Proof Half Crown, George V, 1910-1936. S-4011, ESC-3710, Davies 1660 (R). 14.17g. flat narrow rim. Reverse - it is almost identical to the 1902 design except for the absence of a beaded circle between the garter and legend (modified De Saulles design with no initials as performed by the Mint). A central crowned Shield of the Royal Arms scalloped and cusped with Garter and collar. The miniature St George and dragon pendant at the base of the garter is replaced with floral decoration. *Attractive blue and golden brown toning, FDC.*

\$1,000



2742

1911 Proof Florin, George V, 1910-1936. S-4012, ESC-3756, Davies 1731 Dies 2 A (S). 11.33g. I of GEORGIUS to gap between denticles. Reverse - four crowned shields (Royal Arms) in a cross pattern at the centre is the Star of the Garter. Four sceptres divide the angle between the shields. No designer initials as an internal (Mint) design. The legend reads between crowns ONE Florin with the date below. *Attractive iridescent toning, brilliant FDC.*

\$450



2743

1911 Proof Shilling, George V, 1910-1936. S-4013, ESC-3800, Davies 1792 Dies 3 A (S). 5.61g. Reverse - lion passant regardant standing upon the Imperial Crown with a decorated inner circle between the legend and now a denticular border instead of the plain 1902 version. No designer's initials (internal Mint modification of De Saulles Royal Crest) a copy of the 1902 design. The legend reads FID: DEF: IND: IMP: with the date split by the crown and ONE SHILLING below the decorative inner circle. *Peripheral toning, FDC.*

\$300



2744

1911 Proof Sixpence, George V, 1910-1936. S-4014, ESC-3872, Davies 1863 Dies 2 B (S). 2.81g. Reverse - a modified version of the DeSaulles shilling design of the Royal Crest. As per the 1911 shilling. The legend reads FID: DEF: IND: IMP: with the date split by the crown and SIXPENCE below. *Brilliant blue and grey iridescence, FDC.*

\$200



2745

1911 Proof Maundy Set, George V, 1910-1936. S-4016, ESC-3971, Davies 1970 (N). 4 coins with plain edge. 4d 1.85g, 3d 1.41g, 2d 0.95g and 1d 0.46g. Reverse - Merlen's modified design now with Imperial crown above numeral value, which splits the date; near the rim, two oak branches form a wreath tied by a ribbon at the base. *Lightly toned, nearly FDC.* (4)

\$500



2746

1911 Proof Short Set 2, George V, 1910-1936. S-PS12 Coronation. Sovereign to Maundy Penny. (10 coins) Official red Moroccan leather case (medium size with 3-4-3 roundel pattern). Mintage 952 sets issued. *Very fine.*

\$200



2747

1911 Proof Sovereign, George V, 1910-1936. S-3996, W&R 416 (S). 7.98g. Reverse - Benedetto Pistrucci's St George and the Dragon, script letters WWP in relief on the ground line below broken lance, B.P. in relief below right of exergue. *Brilliant, virtually FDC and scarce.*

\$3,000



2748

1911 Proof Half Sovereign, George V, 1910-1936. S-4006, W&R 418 (S). 3.99g. Reverse - Benedetto Pistrucci's St George and the Dragon, for the first time in the proof set series, his initials B.P. appear on the right side of the coin's exergue. *Brilliant FDC.*

\$1,200



2749

1911 Proof Half Crown, George V, 1910-1936. S-4011, ESC-3710, Davies 1661 (S). 14.17g. Chamfered rim. Reverse - it is almost identical to the 1902 design except for the absence of a beaded circle between the garter and legend (modified De Saulles design with no initials as performed by the Mint). A central crowned Shield of the Royal Arms scalloped and cusped with Garter and collar. The miniature St George and dragon pendant at the base of the garter is replaced with floral decoration. *Attractively toned, FDC.*

\$900



2750

1911 Proof Florin, George V, 1910-1936. S-4012, ESC-3756, Davies 1731 Dies 2 A (S). 11.33g. I of GEORGIVS to gap between denticles full neck. Reverse - four crowned shields (Royal Arms) in a cross pattern at the centre is the Star of the Garter. Four sceptres divide the angle between the shields. No designer initials as an internal (Mint) design. The legend reads between crowns ONE Florin with the date below. *Attractive iridescent brilliant tone, FDC.*

\$500



2751

1911 Proof Shilling, George V, 1910-1936. S-4013, ESC-3800, Davies 1792 Dies 3 A (S). 5.61g. Reverse - lion passant regardant standing upon the Imperial Crown with a decorated inner circle between the legend and now a denticular border instead of the plain 1902 version. No designer's initials (internal Mint modification of De Saulles Royal Crest) a copy of the 1902 design. The legend reads FID: DEF: IND: IMP: with the date split by the crown and ONE SHILLING below the decorative inner circle. *Brilliant attractively toned FDC.*

\$300



2752

1911 Proof Sixpence, George V, 1910-1936. S-4014, ESC-3872, Davies 1863 Dies 2 B (S). 2.81g. Reverse - a modified version of the DeSaulles shilling design of the Royal Crest. As per the 1911 shilling. The legend reads FID: DEF: IND: IMP: with the date split by the crown and SIXPENCE below. *Blue iridescent tone, brilliant FDC.*

\$200



2753

1911 Proof Maundy Set, George V, 1910-1936. S-4016, ESC-3971, Davies 1970 (N). 4 coins with plain edge. 4d 1.85g, 3d 1.41g, 2d 0.95g and 1d 0.46g. Reverse - Merlen's modified design now with Imperial crown above numeral value, which splits the date; near the rim, two oak branches form a wreath tied by a ribbon at the base. *Gold and grey brown toned, nearly FDC.* (4)

\$400



2754

1911 Proof Silver Set Case, George V, 1910-1936. S-PS13 Coronation. Halfcrown to Maundy Penny. (8 coins) Official red Moroccan leather case with white silk and blue velvet interior. Lid stamped in gold with the imperial crown between SPECIMEN COINS at top and 1911 at the bottom, inside the silk lining is stamped with RM under the crown. Mintage 2,243 sets issued. *Nearly extremely fine.*

\$150



2755

1911 Specimen Set Case, The rims on these specimen coins are not as flat, smooth and wide as the proof strikes. However, the strike quality is comparable. Typically struck from new regular dies on polished planchets and collected from the presses via careful handling. George V, 1910-1936. 1911, S-PS13* Coronation. Halfcrown to Maundy Penny. (8 coins) Blue cardboard (white interior) shipper box fitted with ribbon ties. *Nearly fine and very rare.*

\$200



2756

1911 Proof Silver Set, George V, 1910-1936. S-4011, ESC-3710, Davies 1661 (S). 14.11g. Chamfered rim. Reverse - it is almost identical to the 1902 design except for the absence of a beaded circle between the garter and legend (modified De Saulles design with no initials as performed by the Mint). A central crowned Shield of the Royal Arms scalloped and cusped with Garter and collar. The miniature St George and dragon pendant at the base of the garter is replaced with floral decoration. 1911 Proof Florin, George V, 1910-1936. S-4012, ESC-3756, Davies 1731 Dies 2 A (S). 11.29g. I of GEORGIVS to gap between denticles Reverse - four crowned shields (Royal Arms) in a cross pattern at the centre is the Star of the Garter. Four sceptres divide the angle between the shields. No designer initials as an internal (Mint) design. The legend reads between crowns ONE Florin with the date below. 1911 Proof Shilling, George V, 1910-1936. S-4013, ESC-3800, Davies 1792 Dies 3 A (S). 5.64g. Reverse - lion passant regardant standing upon the Imperial Crown with a decorated inner circle between the legend and now a denticular border instead of the plain 1902 version. No designer's initials (internal Mint modification of De Saulles Royal Crest) a copy of the 1902 design. The legend reads FID: DEF: IND: IMP: with the date split by the crown and ONE SHILLING below the decorative inner circle. 1911 Proof Sixpence, George V, 1910-1936. S-4014, ESC-3872, Davies 1863 Dies 2 B (S). 2.81g. Reverse - a modified version of the DeSaulles shilling design of the Royal Crest. As per the 1911 shilling. The legend reads FID: DEF: IND: IMP: with the date split by the crown and SIXPENCE below. 1911 Proof Maundy Set, George V, 1910-1936. S-4016, ESC-3971, Davies 1970 (N). 4 coins with plain edge 4d 1.90g, 3d 1.43g, 2d 0.95g and 1d 0.47g. Reverse - Merlen's modified design now with Imperial crown above numeral value, which splits the date; near the rim, two oak branches form a wreath tied by a ribbon at the base. *Evenly matched, attractive blue grey tone brilliance, FDC.* (8)

\$2,000



2757

1911 Specimen Silver Set, George V, 1910-1936. S-4011, ESC-3710, Davies 1661 (S). 14.09g. Chamfered rim. Reverse - it is almost identical to the 1902 design except for the absence of a beaded circle between the garter and legend (modified De Saulles design with no initials as performed by the Mint). A central crowned Shield of the Royal Arms scalloped and cusped with Garter and collar. The miniature St George and dragon pendant at the base of the garter is replaced with floral decoration. 1911 Specimen Florin, George V, 1910-1936. S-4012, ESC-3756, Davies 1731 Dies 2 A (S). 11.31g. I of GEORGIVS to gap between denticles. Reverse - four crowned shields (Royal Arms) in a cross pattern at the centre is the Star of the Garter. Four sceptres divide the angle between the shields. No designer initials as an internal (Mint) design. The legend reads between crowns ONE Florin with the date below. 1911 Specimen Shilling, George V, 1910-1936. S-4013, ESC-3800, Davies 1792 Dies 3 A (S). 5.65g. Reverse - lion passant regardant standing upon the Imperial Crown with a decorated inner circle between the legend and now a denticular border instead of the plain 1902 version. No designer's initials (internal Mint modification of De Saulles Royal Crest) a copy of the 1902 design. The legend reads FID: DEF: IND: IMP: with the date split by the crown and ONE SHILLING below the decorative inner circle. 1911 Specimen Sixpence, George V, 1910-1936. S-4014, ESC-3872, Davies 1863 Dies 2 B (S). 2.82g. Reverse - a modified version of the DeSaulles shilling design of the Royal Crest. As per the 1911 shilling. The legend reads FID: DEF: IND: IMP: with the date split by the crown and SIXPENCE below. 1911 Specimen Maundy Set, George V, 1910-1936. S-4016, ESC-3971, Davies 1970 (N). 4 coins with plain edge 4d 1.89g, 3d 1.42g, 2d 0.95g and 1d 0.47g. Reverse - Merlen's modified design now with Imperial crown above numeral value, which splits the date; near the rim, two oak branches form a wreath tied by a ribbon at the base. *Choice toned FDC.* (8)

\$2,000



2758

Investiture of Edward, Prince of Wales, 1911, medal in silver (35mm) 21.54g by W.Goscombe John (BHM 4079; Eimer 1925) with case of issue. *Iridescent tone, uncirculated.*

\$250

The official Royal Mint issue.

1927 NEW COINAGE

A proof set was issued to mark the issue of new reverse designs by George Kruger-Gray. The set stands out by returning the prestigious yet cumbersome crown and deleting the Maundy. The crown was not released for general circulation. The set also reveals a different reverse design for the threepence to enable its ready differentiation from the Maundy version for the first time. The set comprises silver coins only, which are struck from a debased silver quaternary alloy developed and perfected in the early 1920s at the Royal Mint. The Mint was in a rush to have this set ready for the Christmas trade, which may explain their variable quality. Obverse - modified bare head of King George V facing left with engravers initials B M (Bertram McKennal) on the truncation without stops. Legend for Crown, « Crown, florin, shilling, GEORGIVS V DEI GRA: BRITT: OMN: REX Translation: George 5th, by the Grace of God, King of all the Britains, On these coins the additional titles and acclamations (FID* DEF* IND* IMP*) were incorporated into the reverse legends. On the smaller coins, the legend was lengthened to accommodate all the lettering on the obverse, as the reverse designs only allowed for essential legends covering the denomination and date. Sixpence and Threepence - GEORGIVS V D. G. BRITT: OMN: REX F. D. IND: IMP: Edge is straight-grained unless otherwise stated; reverse die axis struck en Medaille. The borders on the coins have denticles on both sides. Reverse - The Deputy Mint Master, Col. (later Sir) Robert Johnson, was not a fan of the 1911 coinage reverse designs and initiated a new Royal Mint advisory committee. This group would assist with selecting the best designs from a young new talented pool of artists and modellers, including Paget, Kruger-Gray and Metcalfe. However, conservative elements in the Palace and the committee ensured that Heraldry still dominated the new reverse designs.



2759

1927 Proof Set Cases, George V, 1910-1936. S-PS14 New Coinage. Official maroon leatherette covered metal presentation case embossed with the G V coat of arms. The Interior has a white silk lining and black velvet roundels fitted with black ribbon lifters; George V, 1910-1936. S-PS14 New Coinage. With official maroon leatherette covered metal presentation case embossed with the G V coat of arms. The Interior has a bare white silk lining and black velvet roundels fitted with black ribbon lifters. Crown to three pence (6 coins) Brilliant Set Mintage 15,000 sets struck. Also the red cardboard box (white interior) used to protect the coins during shipping. Crown to three pence (6 coins). Attractively toned Mintage 15,000 sets struck in quaternary silver alloy. *Very fine - extremely fine.* (3)

\$300



2760

1927 Proof Crown, George V, 1910-1936. S-4036, ESC-3631, L&S 36, Davies 1630 Dies 1 A (N). 28.25g. Reverse - large central crown surrounded by garnished wreath comprising the floral emblems - shamrocks, roses and thistles. K.G. (with stops) below left of W in CROWN. Legend broken by flowers reads *FID* *DEF* *IND* *IMP* with CROWN at the base. *Deep blue tone on reverse, partly toned on obverse attractive, FDC.*

\$600



2761

1927 Proof Half Crown, George V, 1910-1936. S-4037, ESC-3732, Davies 1700 (N). 14.13g. Reverse - uncrowned shield of the Royal Arms scalloped to position crowned Royal Ciphers on both sides. Legend FID* DEF IND* IMP at the top, HALF* CROWN* 1927 at base - incorporates thistle, rose, and shamrock at 9,12 and 3 o'clock positions. K G initials are spaced across the bottom of the shield. *Attractive blue grey tone matching the crown, FDC.*

\$250



2762

1927 Proof Florin, George V, 1910-1936. S-4038, ESC-3779, Davies 1770 (N). 11.33g. Reverse - Central G is crossed by four crowned sceptres forming quadrants occupied by shields of the royal arms. K.G. initials are present across the base of the lowest crown. Legend is interrupted by crowns and reads FID * DEF IND*IMP and 1927* ONE FLORIN at the bottom. *Attractive deep blue to match crown and halfcrown, FDC.*

\$200



2763

1927 Proof Shilling, George V, 1910-1936. S-4039, ESC-3830, Davies 1831 (N). 5.65g. Reverse - royal crest with crowned lion passant regardant standing on a large tilted crown. The lion's tail separates K G initials. Legend inscription is broken by the lion's head and tail FID*DEF IND*IMP* and at the base ONE*SHILLING* 1927. *Golden tone, nearly FDC.*

\$150



2764

1927 Proof Sixpence, George V, 1910-1936. S-4040, ESC-3901, Davies 1891 (N). 2.83g. Reverse - Numismatically interesting as this design is the first to present a natural history subject instead of heraldry. Overlapping oak branches terminating in six pairs of leaves and acorns. K G initials in the centre. The acorns divide the legend * SIX PEN CE * and at the base * A * 1927 * D *. *Golden tone, nearly FDC.*

\$100



2765

1927 Proof Threepence, George V, 1910-1936. S-4042, ESC-3946, Davies 1951 (N). 1.44g. Plain edge. Reverse - similar design to the sixpence, except it, now comprises only three oak sprigs. The K is missing in the designer's initials, leaving a solitary G at the centre. The legend reads THREE . . PENCE . with 1927 at the base. *Deep golden red toned, FDC.*

\$250



2766

1927 Cased Regular Maundy Set, George V, 1910-1936. S-4027, ESC-3987, Davies 1986 (S). 4 coins with plain edge. 4d 1.89g, 3d 1.43g, 2d 0.95g and 1d 0.49g. Reverse - Imperial crown above numeral value, which splits the date; near the rim, two oak branches form a wreath tied by a ribbon at the base. *Case square, very fine, coin lightest of tone, uncirculated.* (4)

\$300



2767

1927 Proof Silver Set, George V, 1910-1936. S-4036, ESC-3631, L&S 36, Davies 1630 Dies 1 A (N). 28.35g. Reverse - large central crown surrounded by garnished wreath comprising the floral emblems - shamrocks, roses and thistles. K.G. (with stops) below left of W in CROWN. Legend broken by flowers reads *FID * DEF* *IND* *IMP* with CROWN at the base. 1927 Proof Half Crown, George V, 1910-1936. S-4037, ESC-3732, Davies 1700 (N). 14.15g. Reverse - uncrowned shield of the Royal Arms scalloped to position crowned Royal Ciphers on both sides. Legend FID* DEF IND* IMP at the top, HALF* CROWN* 1927 at base - incorporates thistle, rose, and shamrock at 9,12 and 3 o'clock positions. K G initials are spaced across the bottom of the shield. 1927 Proof Florin, George V, 1910-1936. S-4038, ESC-3779, Davies 1770 (N). 11.31g. Reverse - central G is crossed by four crowned sceptres forming quadrants occupied by shields of the royal arms. K.G. initials are present across the base of the lowest crown. Legend is interrupted by crowns and reads FID * DEF IND*IMP and 1927* ONE FLORIN at the bottom. 1927 PROOF Shilling, George V, 1910-1936. S-4039, ESC-3830, Davies 1831 (N). 5.68g. Reverse - royal crest with crowned lion passant regardant standing on a large tilted crown. The lion's tail separates K G initials. Legend inscription is broken by the lion's head and tail FID*DEF IND*IMP* and at the base ONE*SHILLING* 1927. 1927 Proof Sixpence, George V, 1910-1936. S-4040, ESC-3901, Davies 1891 (N). 2.85g. Reverse - Numismatically interesting as this design is the first to present a natural history subject instead of heraldry. Overlapping oak branches terminating in six pairs of leaves and acorns. K G initials in the centre. The acorns divide the legend * SIX PEN CE * and at the base *A * 1927 *D*. 1927 Proof Threepence, George V, 1910-1936. S-4042, ESC-3946, Davies 1951 (N). 1.43g. Plain edge. Reverse - similar design to the sixpence, except it, now comprises only three oak sprigs. The K is missing in the designer's initials, leaving a solitary G at the centre. The legend reads THREE. .PENCE. with 1927 at the base. *Untoned, brilliant FDC.* (6)

\$1,200



2768

George V Silver Jubilee, 1935, medals in silver (57mm) 86.05g and (32mm) 15.93g by P.Metcalf (BHM 4249; Eimer 2029a & b) with cases of issue. *The first white silver, second toned, uncirculated.* (2)

\$200

The official Royal Mint issue.



2769

1935 Silver Jubilee Crown, George V, 1910-1936. Proof 5 Shillings (Crown), S-4050, ESC- 3655, L&S-46 and Davies-1651. (R) The coin's borders have denticles on both sides. The reverse die axis struck en Medaille. Lettered edge in relief (raised) DECUS ET TUTAMEN ANNO REGNI XXV. With the official red cardboard box of issue, the lid has a printed imperial crown, and the interior is a blue card with a roundel lined with white felt. The Mint struck the United Kingdom's first commemorative crown specifically to mark King G.V.'s silver jubilee. In addition to sizeable regular issue, 2,500 were struck in sterling silver (this coin) and issued at a half-crown premium in the red cardboard box. Metcalfe's striking "rocking horse" art deco St George and the dragon design was controversial to the public accustomed to seeing Pistrucci's classical rendering. This coin is encapsulated by PCGS as PR 66 cameo. Obverse: by Sir B. McKennal (initials on truncation) Effigy of G.V facing left. The legend reads GEORGIUS V. DG. BRITT: OMN: REX. FD. IND: IMP: Reverse: by P. Metcalfe (initials under dragons tail) St George and the dragon. Legend above the design reads CROWN 1935 split by St Georges sword. *Case extremely fine, coin brilliant FDC and rare.*

\$2,000



2770

Coronations of Edward VII, 1902, George V, 1911 and George VI, 1937, small size medals in silver (31mm) also 1937 small size in bronze (31mm), with cases of issue. *Uncirculated*. (4)

\$150

The official Royal Mint issues.



George VI 1936 - 1952



2771

Coronation of George VI, 1937, medallion in silver (57mm) 83.41g by P.Metcalf (BHM 4314; Eimer 2046a) with case of issue. *Even light grey matt finish, uncirculated.*

\$200

The official Royal Mint issue.



2772

Coronation of George VI, 1937, medallion in yellow bronze (57mm) 83.84g by P.Metcalf (BHM 4314; Eimer 2046a) with case of issue. *Gilt appearance, attractive tone, uncirculated and scarce.*

\$300

1937 CORONATION PROOF SET



2773

1937 Proof Gold Set Case, George VI, 1936-1952. S-PS15 Coronation Set. Official maroon leatherette covered metal presentation case gold embossed with the royal cypher and labelled specimen coins 1937. Interior is cream velvet roundels with white silk lining to lid stamped with the Royal Mint logo. Five sovereigns to half sovereign (4 coins). Mintage 5001 sets issued. The Mint deliberately left the edges plain on all the gold coins to signify their proof status (not for circulation). *Extremely fine.*

\$200



2774

1937 Proof Five Sovereigns, George VI, 1936-1952. S-4074, W&R 435, L&S 1. (N) 39.93g. Reverse - Benedetto Pistrucci's St George and the Dragon small B.P. in relief below right of exergue, which contains the date. *Deep cameo, miniscule field hairlines, otherwise FDC.*

\$15,000



2775

1937 Proof Two Sovereigns, George VI, 1936-1952. S-4075, W&R 437 (N). 15.98g. Reverse - Benedetto Pistrucci's St George and the Dragon, medium B P in relief below right of exergue with no stops. *Semi cameo, FDC.*

\$5,000



2776

1937 Proof Sovereign, George VI, 1936-1952. S-4076, W&R 439 (N). 7.94g. Reverse - Benedetto Pistrucci's St George and the Dragon, ground line below broken lance is much reduced with no WWP present, B.P. in relief below right of exergue. *Deep cameo, virtually FDC.*

\$6,000



2777

1937 Proof Half Sovereign, George VI, 1936-1952. S-4077, W&R 442 (N). 3.97g. Reverse - Benedetto Pistrucci's St George and the Dragon, his initials B.P. appear on the right side of the coin's exergue. With B.P., variations occur in its position and number of stops, this coin includes the last stop. *Virtually FDC.*

\$1,500



lot 2778 part



2778

1937 Proof Silver & Bronze Set, George VI, 1936-1952. S-PS16 Coronation Set. With official maroon presentation case, gold embossed with the royal cypher and labelled specimen coins 1937 with its associated outer cardboard mailer. The Interior has dark blue velvet roundels with a white silk lining to the lid stamped with the Royal Mint logo. Also included is the rare red cardboard box (blue cardboard roundels with white lining to lid) used to protect the coins during shipping. Crown to farthing including maundy set (15 coins). Mintage 20,901 sets struck. *Cases (2) extremely fine; coins FDC as issued.* (15)

\$950



2779

1937 VIP Crown, George VI, 1936-1952. Proof "V.I.P." 5 Shillings (Crown) 1937, S-4079. ESC- 4022, L&S-5, Davies 2010. Straight-grained edge. 28.14g 500 fine Ag (quaternary alloy) V.I.P. issue. R5. Obverse: by T.H. Paget (initials under truncation) Effigy of G.VI facing left. The legend reads GEORGIVS VI D: G BR : OMN : REX. Reverse: by G. K. Gray (initials between hind legs of lion and unicorn supporters) Crowned shield of arms above a scroll reading DIEU ET MON DROIT. Legend above arms reads FID: DEF: : IND IMP and below CROWN : 1937. This VIP issue is distinguishable from proof coins by the extra frosted cameo appearance, particularly on the reverse and maybe struck in fine silver. *Ultra cameo, FDC and extremely rare.*

\$2,000

1950 MID CENTURY SET

The loss of IND : IMP from the legend distinguishes this proof set as the king could no longer use one of his titles, "Emperor of India". This was due to India gaining independence in 1947. Silver was also no longer used, replaced by Cupro-Nickel (75% Cu 25% Ni) in 1947. As in Australia, silver was reclaimed to assist with paying off foreign debts. The Maundy series paradoxically reverted from 500 fine back to 925 fine Ag in 1947. Given the title change, the Royal Mint also took the opportunity to simplify the coinage designs. The obverse designs and legends for the CuNi coins remained the same for GVI's Third issue coinage; however, the bronze and Maundy had the F:D: lengthened to FIDEI DEF. to replace the missing IND: IMP. The legend lettering is also slightly thicker on these issues, and the reverses are slightly enlarged compared to 1937. The reverse designs are modified to remove the IND : IMP where present, and the designer's initials K.G. are also omitted. The English shilling had the roses removed from each side of the legend. The Sixpence Royal Cypher was also changed to G VI R, and the date moved higher. The silver threepence was not replaced with a CuNi version. Edges are straight-grained, excepting the brass and bronze coins which are smooth; their reverse die axes are all struck en Medaille. The borders on all denominations all have denticles (toothed border) except the brass threepence, which has plain dodecagonal rims with a plain edge.



2780

1950 Proof Set, George VI, 1936-1952. 1951, S-PS19 Mid-Century Set. With an official red cardboard case with the Royal Mint logo. The Interior has black fabric roundels fitted with ribbon lifters and a white pad under the lid. Half Crown to farthing (9 coins) Mintage 17,513 sets issued. Half-crown S-4106, ESC-4069. Rev. Uncrowned "war" shield with concave sides hung by a loop to a nail; Florin S-4107, ESC-4112. Rev. Crowned rose with the thistle of Scotland and shamrock of Ireland to left and right; English shilling S-4108, ESC-4197. Rev. Standing lion on the large crown; Scottish Shilling S-4109, ESC-4208. Rev. Seated lion on small crown flanked left by shield incorporating the saltire (cross of St Andrew) and right thistle; Sixpence S-4084, ESC-4219. Rev. Crowned Royal cypher G VI R; Threepence NiBr S-4113, Peck-2395. Rev. Thrift or Sea Pink plant in flower; Penny S-4117, Peck-2421. Rev. Modified Britannia with lighthouse; Half Penny S-4118, Peck-2451. Rev. Francis Drakes Golden Hind and Farthing S-4119, Peck-2484. Rev. A wren. *Case extremely fine, coins as issued, FDC. (9)*

\$250



2781

1950 Maundy Set, George VI, 1936-1952. Cased set of 4 coins. Mintage 1,405 Sets. Maundy S-4096, ESC-4319, Davies 2271. (4d, 3d, 2d,& 1d) (4d 1.90 g, 3d 1.42 g, 2d 0.95 g,& 1d 0.46 g) Obv. INP: IMP removed and F:D extended as per the bronze coinage. Rev. Modified Merlen design with crowned value surrounded by oak branches; although not part of the proof set, the maundy are included here for completeness as they were struck to proof quality. *Light golden toning, FDC.* (4)

\$500

1951 FESTIVAL OF BRITAIN SET

The festival of Britain was held to boost the population's morale by celebrating British achievements. It coincided with the gradual lifting of wartime austerity and restrictions and envisaged a future driven by science and industry. The festival ran throughout the summer principally on the south bank of the Thames in London. This set is distinguished by the return of the crown, which was very popular as a festival crown struck from polished dies and sold at a sixpenny premium. The coin comes in two varieties varying in the definition of the reverse design, and this is most easily seen in the horse's leg and the dragon's arm. The rest of the set has identical designs to the 1950 proofs, excluding the date. Edges are straight-grained, excepting the crown, brass and bronze coins, which have smooth edges; reverse die axes are all struck en Medaille. The borders on all denominations have denticles except the brass threepence, which has plain dodecagonal rims.



LOT 2782 PART



2782

1951 Proof Set, George VI, 1936-1952. 1951, S-PS19 Festival of Britain Set. With rare official premium blue leatherette covered metal presentation case lid embossed with the royal mint logo. Interior has black velvet roundels fitted with ribbon lifters and a white silk lining (stamped in black with RM logo) Crown to farthing (10 coins). Mintage 20,000 sets struck. *Case extremely fine, coins as issued, FDC.* (10)

\$500

Crown, S-4111, ESC- not listed. L&S-10, Davies not recorded, this is a special coin but not the VIP. Incuse lettered edge *MDCCCLI CIVIUM INDUSTRIA FLORET CIVITAS MCMLI. CuNi. Rare. Struck on a specially polished flan. Legend translates as: 1851 by the industry of the people the state flourishes 1951. Half-crown S-4106, ESC-4072. Rev. Uncrowned "war" shield with concave sides hung by a loop to a nail; Florin S-4107, ESC-4115. Rev. Crowned rose with a thistle of Scotland and shamrock of Ireland to left and right; English shilling S-4108, ESC-4200. Rev. Standing lion on the large crown; Scottish Shilling S-4109, ESC-4212. Rev. Seated lion on small crown flanked left by shield incorporating the saltire (cross of St Andrew) and right thistle; Sixpence S-4084, ESC-4263. Rev. Crowned Royal cypher G VI R; Threepence NiBr S-4113, Peck-2397. Rev. Thrift or Sea Pink plant in flower; Penny S-4117, Peck-2423. Rev. Modified Britannia with lighthouse; Half Penny S-4118, Peck-2453. Rev. Francis Drake's Golden Hind and Farthing S-4119, Peck-2486. Rev. A wren.

PROOF "V.I.P." 5 SHILLINGS (CROWN) 1951



2783

1951 VIP Crown, George VI, 1936-1952. Proof "V.I.P." 5 Shillings (Crown) 1951, S-4111. ESC- 4025. L&S-11, Davies 2020. Incuse lettered edge *MDCCCLI CIVIUM INDUSTRIA FLORET CIVITAS MCMLI. 28.07g. CuNi, V.I.P. issue. (R4, 11-20 estimated mintage) Type two with fully defined reverse features. Legend translates as: 1851 by the industry of the people the state flourishes 1951. Struck for the Festival of Britain in 1951 and commemorates the centenary of the Great Exhibition 1851 and the 400th anniversary of the silver crown; paradoxically, this was the first UK crown struck in base metal. Obverse: by H. Paget (initials under truncation) Effigy of G.VI facing left. The legend reads GEORGIVS VI D:G BR : OMN : REX F:D: above effigy with FIVE SHILLINGS underneath. Without IND IMP. Reverse: by B. Pistrucci (initials under the right side of exergue) St George slaying the dragon with no legend and date below - see detailed description for the 1887 issues. This VIP issue is distinguishable from proof coins by the extra polishing treatments applied to both the flan and acid-etched dies and extra care in striking resulting in a deep frosted cameo appearance with mirrored fields. *Ultra cameo FDC and extremely rare.*

\$1,500



2784

1951 Maundy Set, George VI, 1936-1952. Cased set of 4 coins. Mintage 1,468 Sets. Plain edge. S-4096, ESC-4320, Davies 2272. (4d, 3d, 2d,& 1d) (4d 1.89 g, 3d 1.42 g, 2d 0.95 g,& 1d 0.48 g) Obv. Legend terminating in REX FIDEI DEF (King defender of the faith). Rev. Modified Merlen design with crowned value surrounded by oak branches; Although not part of the proof set, the maundy are included here for completeness as they were struck to proof quality. *Uneven toned, FDC. (4)*

\$500



Elizabeth II 1952 -

1953 CORONATION SET

The crown obverse by Gilbert Ledward distinguishes this set by featuring the monarch on horseback - a design not seen on crowns for several hundred years. The popular design took the place of the traditional commemorative coronation medal. Obverse - For all the other coins, it comprises Queen Elizabeth's youthful draped laureate bust facing right in contrast to the truncated bare heads of her male predecessors. It was modelled in shallow relief by the established sculptor Mary Gillick. The queen's head is uncrowned, with her hair confined by a chaplet of laurel leaves in the classic style. The hair is tied by a ribbon whose ends flow out horizontally. An almost imperceptible dress covers the shoulders at the base of which in the truncation are the modellers' incuse initials M.G. In an unorthodox move, Gillick modelled the legend as a continuous circle not broken by the bust. Legend is a single year type + ELIZABETH II DEI GRA : BRITT : OMN : REGINA F : D : with minor text adjustments to prevent duplication with lettering on heraldic reverse designs. Due to many Commonwealth nations becoming more independent, the 1953 set is the last to feature Britt Omn (All the Britain's, i.e. British Territories). For the first time, leeks representing Wales are included in reverse designs. The farthing was discontinued in 1956 due to inflation. Edges are straight-grained excepting the brass and bronze coins; reverse die axis struck en Medaille. Excluding the crown, the other CuNi coins their obverse have beaded borders and reverses toothed borders. The penny has beaded borders on both sides, whilst the other bronze follows the border pattern of the CuNi coins. The brass threepence has plain dodecagonal rims with a plain edge. For the first time, a commemorative crown has a double denticle pattern border on its obverse, with the space between large denticles filled with a slightly shorter and narrower version. This type of decoration was standard for the reverse of Australian silver coins at the time. The border on the reverse was again a first for a crown having a scalloped raised pattern with sharp points towards the centre.



2785

1953 Proof Set, Elizabeth II, 1952-. S-PS19 Coronation Set. With official maroon leatherette metal presentation case whose lid is gold embossed with the royal cypher above CROWNED 2ND JUNE 1953. The Interior has burgundy plastic velour roundels and a white silk lining inside the lid (stamped in black with the RM logo). With associated cardboard mailer. Crown to farthing (10 coins) all struck in base metals. Mintage 40,000 sets struck. *As issued*, FDC. (10)

\$250

PROOF "V.I.P." 5 SHILLINGS (CROWN) 1953



2786

1953 VIP Crown, Elizabeth II, 1952-. Proof "V.I.P." 5 Shillings (Crown), S-4136. ESC- 4333. L&S-3, Davies 2280. Incuse lettered edge *FAITH AND TRUTH I WILL BEAR UNTO YOU. 28.01g. CuNi V.I.P. issue. R3. Obverse: by G. Ledward (initials behind rear hoof) QEII on horseback (Winston) separating a pair of royal cyphers. The legend reads ELIZABETH . II. DEI. GRATIA. BRITT. OMN. REGINA.FIDEI. DEFENSOR * FIVE SHILLINGS* Reverse: by C. Thomas (initials under Irish Shield) and E. Fuller (initials under English Shield) comprises four shields in saltire pattern bearing arms of England, Scotland, Ireland and England radiating from a central crown. The shields are separated by the floral emblems of all four constituent kingdoms and principality, with the Welsh leek separating the date. This VIP issue is distinguishable from proof coins by the extra polishing treatments applied to both the flan and acid-etched dies and extra care in striking resulting in a deeper frosted cameo appearance with mirrored fields. *Deep cameo, FDC and very rare.*

\$1,500



2787

1953 Maundy Set, Elizabeth II, 1952-., S-4126, ESC-4559, Davies 2520. Set of 4 coins. Mintage 1,025 Sets. Fine silver, Plain edge. (4d 1.89 g, 3d 1.43 g, 2d 0.94 g, & 1d 0.47 g) Obv. Legend terminating in BRITT : OMN : REGINA F : D : (All the Britains Queen defender of the faith). Rev. Modified Merlen design with crowned value surrounded by oak branches; Although not part of the proof set, the maundy are included here for completeness as they were struck to proof quality. For maundy type set collectors, this is the only year that BRITT:OMN: was included in the obverse legend. Includes general issue square case. *Case extremely fine, coins untuned, FDC and scarce.*

\$1,500

PROOF "V.I.P." 5 SHILLINGS (CROWN) 1960



2788

1960 VIP Crown, Elizabeth II, 1952-. Proof "V.I.P." 5 Shillings (Crown), S-4143. ESC- 4338. L&S-10, Davies 2290. Straight-grained edge, CuNi V.I.P. issue. R4. Est. Mintage: 30-50. The first time currency crowns were struck since 1953, and the first time the effigy by M. Gillick (initials on truncation) was the same as the other denominations. Obverse: Modified Gillick Effigy of Elizabeth II facing right. Given its large size and a reduction in the Queens titles to ELIZABETH II DEI GRATIA REGINA F*D* FIVE SHILLINGS the obverse legend incorporates the more readable Albertus font and a different form of beaded decoration to other issues. Reverse: by C. Thomas (initials under Irish Shield) and E. Fuller (initials under English Shield) is identical to the 1953 crown excluding the 1960 date and comprises four shields in saltire pattern bearing arms of England, Scotland, Ireland and England radiating from a central crown. The shields are separated by the floral emblems of all four constituent kingdoms and principality, with the Welsh leek separating the date. This VIP issue is distinct from the coins struck using polished dies, by the extra polishing treatments applied to both the flan and acid-etched dies and extra care in striking resulting in a deep frosted cameo appearance with mirrored fields set off by high, squared-off rims. An example of the crown struck from polished dies (ESC-4337, L&S 7) is included for comparison. *The first deep cameo, FDC and very rare.* (2)

\$1,500

They were struck as part of the Royal Mints' drive for more business by participating in the British Trade Fair in New York, USA. The coins were struck in London with a regular finish but with polished dies for those sold at the NY Fair. The bulk of the mintage was released to the UK general public. The edge is straight-grained, and the reverse die axis struck en Medaille. This crown has the same pattern border on both sides, having a scalloped raised pattern with sharp points towards the centre.

1970 LAST STERLING COINAGE SET



2789

1970 Proof Set, Elizabeth II, 1952-. 1970, S-PS20 "Last Sterling" Set. In as supplied plastic case with associated cardboard outer sleeve and booklet. Half-crown to halfpenny (8 coins) plus rectangular medallion. All struck in base metals with a very large mintage of 750,000 sets struck Half-crown S-4145, ESC-4350, Davies 2311. Rev. Crowned garnished shield between E. R. with a square top; Florin S-4146, ESC-4394, Davies 2361. Rev. Central double English rose within a circlet of thistles, shamrocks and leeks; English shilling S-4147, ESC-4443, Davies 2280. Rev. Crowned shield bearing three leopards; Scottish Shilling S-4148, ESC-4447, Davies 2280. Rev. Crowned shield bearing single Scottish heraldic lion in a rampant pose; Sixpence S-4149, ESC-4522, Davies 2280. Rev. garland of interlaced floral emblems for England, Scotland, Ireland and Wales; Threepence NiBr S-4153. Rev. Royal coronet above a chained portcullis; Penny S-4157. Rev. Modified Britannia with lighthouse and Half Penny S-4158. Rev. Francis Drakes Golden Hind. The bronze medallion Obv. Royal crown above Elizabeth R and the year. Rev. Royal Mint logo. *FDC.* (8)

\$40

This souvenir set celebrates the end of the duodecimal monetary system in Britain. The coins were only available in proof as the U.K was already well on its way to decimalisation with the new coinage available in February 1971. The last business strikes of these coins were issued as follows: Half-crown; Florin; Sixpence; Threepence; Penny and Halfpenny - 1967. English Shilling and Scottish Shilling - 1966. Obverse - As per 1953 issues excepting the legends updated to + ELIZABETH ú II ú DEI ú GRATIA ú REGINA ú F : D : with minor text adjustments to prevent duplication with lettering on various reverse designs. The Edges are straight-grained, and the reverse die axis struck en Medaille. The obverse of the CuNi coins has beaded borders and their reverse toothed borders. The penny has beaded borders on both sides, whilst the other bronze follows the border pattern of the CuNi coins. The brass threepence has plain dodecagonal rims with a plain edge.

COINS DISPLAYED IN CASES



1826 proof set



1831 proof set



1839 proof set



1853 proof set



1887 proof set



1893 proof set