

GREAT BRITAIN GOLD COINS



1711\*  
**Ancient Britain**, Celtic coinage, Cunobelin, (cAD8-41) gold stater (5.39g), wheat ear CAMV, reverse horse prancing right star above dot in circle below (ABC.2783; S.283). *Reverse struck ten percent off centre, otherwise good very fine.*  
 \$1,000

Ex Colonial Coins Sale 7 (lot 547) (11/02/2006).



1712\*  
**Edward III**, (1327-1377), fourth coinage, 1351-77, noble (7.10g), pre-treaty period, 1351-61, mm cross 3 (1356-61) series G (S.1490), two lis to left of each of two lions on hull. *Made or clipped slightly small, otherwise good very fine.*  
 \$2,800



1713\*  
**James I**, (1603-1625), third coinage 1619-25, gold laurel, (9.02g), fourth bust, mm trefoil, 1624 (S.2638B). *Round, nearly full large flan, slightly double struck on obverse, very fine/good very fine.*  
 \$2,000



1714\*  
**Charles I**, (1625-1649), unite, Group A, bust 1, mm lis, issued 1625, Tower Mint, (8.9g) (S.2685; N.2146). *Round with full flan, good very fine/very fine and scarce.*  
 \$2,400



1715\*  
**Charles I**, (1625-1649), unite, Group B, bust 2, mm heart, issued 1629-1630, Tower Mint (9.02g) (S.2687; N.2148). *Round nearly full flan, very fine or better and rare.*  
 \$2,500



1716\*  
**Charles II**, five guineas, first bust, 1673 (S.3328). *A little polished, planchet flaw marks, otherwise nearly very fine/very fine and rare.*  
 \$15,000

Ex Hess Divo Sale.



1717\*  
**George III**, half guinea, seventh type, 1813 (S.3737). *Good extremely fine.*  
 \$900

1718  
**George III**, third guinea, second head, 1804 (S.3740); **George V**, half sovereign, 1913 (S.4006). *The first plugged with ring mount at top, very good; second good extremely fine. (2)*  
 \$250



1719\*  
**George III**, new coinage, half sovereign, 1817 (S.3786). *Good fine/nearly very fine.*

\$300



1720\*  
**George IV**, laureate head, sovereign, 1822 (S.3800). *Nearly extremely fine.*

\$750



1721\*  
**Queen Victoria**, sovereign, young head, 1853 (S.3852D). *With faulty 5, nearly very fine/very fine.*

\$350

1722  
**Queen Victoria**, sovereign, young head, shield reverse, 1855 (S.3852D). *Very fine.*

\$350

1723  
**Queen Victoria**, young head, half sovereigns, 1853 (2) (S.3859); 1870, 1871 (3) (S.3860); 1872, 1877 (S.3860D); 1883 (S.3861). *Good - nearly fine.* (9)

\$1,650



lot 1724 part



1724\*  
**Queen Victoria**, Jubilee coinage, specimen set of five pounds, two pounds, sovereign and half sovereign, silver crown, double florin, half crown, florin, shilling, sixpence and threepence, 1887 (S.cfPF6). *Sold with an old handcrafted plush case, nearly uncirculated - nearly FDC.* (11)

\$5,500

1725

Queen Victoria, sovereigns, 1888 (S.866), 1900 (S.3874), half sovereigns, 1866, 1870 (S.3860); Edward VII, sovereign, 1903 (S.3969), half sovereign, 1909 (S.3874B). *Very good - good very fine.* (6)

\$1,600



1726

Queen Victoria, Jubilee coinage, half sovereign, 1892 (S.3866C). *Scratches and rim marks, having been held in a mount, otherwise extremely fine.*

\$170



1727

Queen Victoria, old head, half sovereign, 1894, 1900 and 1901 (S.3878); Edward VII, half sovereign, 1902, 1903 (S.3974A), 1906, 1907 (2) (S.3974B). *Very good - fine.* (8)

\$1,400



1728

Queen Victoria, old head, half sovereign, 1901 (S.3878). *Cleaned, very fine.*

\$170



1729

Edward VII, sovereigns, 1907, 1909 (S.3969); George V, sovereigns, 1911, 1912, 1913 (2), 1915 (S.3996). *The second fine, others extremely fine - nearly uncirculated.* (7)

\$2,600



1730

Edward VII, sovereign, 1909 (S.3969). *Some small edge nicks, otherwise extremely fine.*

\$370



part

1731\*

George V, Royal Mint ten coin proof set, 1911, gold sovereign to Maundy penny (S.PS12). *FDC, in maroon case of issue.*

\$2,500

1732

Elizabeth II, proof half sovereign, 1980. *In case of issue, FDC.*

\$200

1733

Elizabeth II, sovereign, 1981 (S.4204). *Uncirculated.*

\$370

1734

Elizabeth II, sovereigns, 1981 (S.4204). *Nearly uncirculated.* (3)

\$1,100



1735\*  
**Scotland, James VI, (1567-1625) eighth coinage, sword and sceptre piece, 1602 (S.5460). Slight creasing, otherwise very fine.**

\$2,500

## GREAT BRITAIN SILVER & BRONZE COINS



1736\*  
**Ancient Britain, Epaticus, silver unit (1.15g), head of Hercules to right, EPATI, reverse eagle standing on snake (S.356). Toned, nearly extremely fine.**

\$300

Ex Australian Coin Auctions Sale 292 (lot 2153).



1737\*  
**Ancient Britain, Celtic, Durotriges, (mid 1st Century BC to mid 1st Century AD), silver quarter stater, geometric type (S.368). Toned, nearly extremely fine.**

\$150



1738\*  
**Early Anglo-Saxon, (c600-775), silver sceatta, series D, type 8, crude standard, reverse central cross pommee, pellets in angles (S.793). Toned, good very fine.**

\$150



1739\*  
**Viking coinage, York, (c895-920), silver penny, Cnut, Patriarchal cross, rev CVNNETTI, small cross (S.993) (1.35g). Struck from clashed dies, toned nearly extremely fine.**

\$750

Ex Australian Coin Auctions Sale 292 (lot 2162)



1740\*  
**Aethelred II, (978-1016), penny (1.56g), crux type, GODPINE MO LVND (Godwine of London)(S.1148). Toned, good very fine.**

\$400



1741\*  
**Aethelred II, (978-1016), helmet type penny, Leopine on Lvnd (Leofwine of London) (S.1152). Peck marks, slight crinkling, otherwise nearly extremely fine.**

\$400



1742\*  
**Athelred II, (978-1016), small cross penny, Leofsig on Gra (Leofsig of Cambridge) (S.1154; N.777). Well struck, extremely fine and rare thus.**

\$500



1743\*

**Cnut**, (1016-1035), penny (1.01g), quaterfoil type, 1017-23, CETEL O EOFRP (Cetel of York)(S.1157; North 781). *Good very fine and rare.*

\$350

Ex Jim Johnson (Auckland), Noble Numismatics Sale 78B (lot 1920), W.H.Lampard Collection and Sale 111 (lot 1382) Decades Collection.



1744\*

**Cnut**, (1016-1035), penny (1.04g), helmet type (1024-30), AELPINC ON PINCE (Winchester)(S.1158; North 787). *Toned, very fine.*

\$300

Ex Noble Numismatics Sale 54 (lot 937) and Sale 111 (lot 1384).



1745\*

**William I**, (1066-1087), penny (1.19g), bonnet type (1068-70), IIDOLF ON EO (Audolf of York)(S.1251; North 842; BMC II). *Cracked, otherwise good fine and rare.*

\$350

Ex Noble Numismatics Sale 52 (lot 1147) and Sale 111 (lot 1390).



1746\*

**Henry I**, (1100-1135), penny (1.37g), facing bust/quatrefoil with piles type (BMC VII), SPERLIC [O]N LVN (Sperlig of London)(S.1268; North 863), moneyer not in BMC for type. *Weakly struck, toned, nearly fine and extremely rare.*

\$500

Ex Dr Brian Bird Collection, Glendining/Spink & Son London Sale 20th November 1974 (lot 289), Noble Numismatics Sale 57 (lot 2935) and Sale 111 (lot 1394).

1747

**John - James I**, a mix of various silver coins including John (1199-1216) silver penny Ilger of London mint (Class 5b) (S.1351), Edward I penny, Canterbury mint (Class 10c), (cfS.1410), Elizabeth I, sixpence, 1574, mm eglantine (S.2563), James I, twopences various types holed or damaged (6). *First coin very fine, others poor - very good.* (9)

\$100

1748

**Henry III**, (1216-1272), long cross silver penny, type 5b (North), issued 1248-1250, rev. NICOLE ON LVND (Nicole of London), (S.1368, N.992); George II, sixpence, old head, 1758, (S.3711). *First coin very fine and off centred obverse, second coin dark tone, nearly uncirculated.* (2)

\$100



1749\*

**Henry V**, (1413-1422), groat, group C, London, mm pierced cross (S.1764). *Flan crack, weak in places, otherwise toned, good fine and rare.*

\$500

Ex Noble Numismatics Sale 77 (lot 760) and Sale 111 (lot 1417).



1750\*

**Henry V**, (1413-1422), penny, class C, Durham, mullet and broken annulet by crown (S.1782; North 1405). *Off centre, good fine.*

\$150

Ex Noble Numismatics Sale 111 lot (1419) and previously a private purchase from Spink London with their ticket.



1751\*

**Henry V**, (1413-1422), halfpenny, London, class C, broken annulets by crown (S.1794). *Chipped, cracked dies, otherwise toned, very fine.*

\$100

Ex Australian Coin Auctions Sale 179 (lot 1045) and Noble Numismatics Sale 111 (lot 1420).



1752\*

**Edward IV**, first reign, (1461-1470), heavy coinage, 1461-4, London groat, group III, mm rose (S.1974; N.1532). *Toned, excellent portrait, nearly extremely fine.*

\$500

Ex Motcomb Collection with Baldwin and Seaby tickets.



1753\*

**Edward IV**, first reign, (1461-1470), silver groat, heavy coinage, mm rose, issued 1464-1465, London Mint, with quatrefoils at neck and trefoil on breast, with eye in inner reverse legend (S.1974; N.1532). *Dark toned, very fine and scarce.*

\$400

Ex Noble Numismatics Sale 111 (lot 1425) and previously private purchase from Spink London with their ticket.



1754\*

**Henry VII**, (1485-1509), facing bust issue, groat, class IIa, London, mm cinquefoil/- (S.2195). *Slightly small, otherwise toned, good very fine.*

\$250

Ex Fulton Collection with Bert Seaby ticket and Noble Numismatics Sale 111 (lot 1432).



1755\*

**Elizabeth I**, (1558-1603), second issue, 1560-1, shilling, mm martlet, bust 3C (S.2555; N.1985). *Toned, very fine.*

\$700

Ex Noble Numismatics Sale 111 (lot 1469).



1756\*

**Elizabeth I**, (1558-1603), fifth issue, 1578-82, sixpence, 1579 mm rose (S.2572). *Nearly fine.*

\$80



1757\*

**Elizabeth I**, (1558-1603), third and fourth issue, threepence, 1573, mm acorn (S.2565). *Toned, good fine.*

\$80

Ex Noble Numismatics Sale 96 (lot 2440).

1758

**Elizabeth I - Queen Victoria**, Elizabeth I, 1558-1603, sixth issue, silver shilling (S.2577) with large scratch on face and repair at top edge from mounting; Anne, after the Union, fourth bust, shilling, 1711 (S.3618) small pierced hole at top; George III, shilling, 1824 (S.3811); Queen Victoria, young head, halfcrowns, 1848, 1878 (S.3888, 3889) (2), shillings, 1867, 1881 (S.3904, 3907) (2), pennies, 1841 no colon after REG, 1853 (S.3948) (2), halfpenny, 1859 (S.3949); Edward VI, Maundy fourpence, 1903 (together with a 1903 Maundy set case), halfpenny, 1902, one third farthing, 1902 (S.3988, 3991, 3992) (3); also Queen Victoria Jubilee head sixpence, 1887 with enamelled reverse; Bristol silver shilling token, issued by royal licence type. *The Queen Victoria copper coins cleaned, otherwise good - extremely fine.* (15 + case)

\$170

1759

**Charles I**, (1642-1648), fourth bust silver shilling, mm tun (S.2791), no inner circles. *In case with certificate of authenticity, very good.*

\$150

Ex Messing Hoard discovered in Essex in the early 1970s.



1760\*

**Charles I**, (1625-1649), Nicholas Briot's coinage, 1631-9, second milled issue, 1638-9, shilling, mm anchor 1638-9 (S.2859). *With adjustment marks, toned, nearly extremely fine.*

\$750

Ex Noble Numismatics Sale 101 (lot 2055) and Sale 111 (lot 1495).



1761\*

**Charles I**, (1625-1649), Nicholas Briot's coinage, 1631-9, second milled issue, 1638-9, sixpence, mm mullet anchor/anchor (S.2860). *Attractive blue grey tone, good very fine.*

\$270



1762\*

**Charles I**, (1625-1649), Nicholas Briot's coinage, 1631-9, second milled issue, 1638-9, sixpence, mm anchor (S.2860). *Adjustment mark through portrait, cleaned, otherwise nearly very fine.*

\$200



1763\*

**Charles I**, (1625-1649), Newark, nine pence, 1646 (S.3144). *Trace of mounting or plugging at top, IX worn off, otherwise toned, fine and rare.*

\$450

Ex J.M.Day Collection.



1764\*

**Commonwealth**, silver crown, 1652, mm sun (S.3214). *Uneven tone, slightly porous surface (has been heated in a fire?), otherwise well struck, nearly very fine.*

\$2,500

Ex Australian Coin Auctions Sale 274 (lot 592) and Noble Numismatics Sale 111 (lot 1505).



1765\*

**Commonwealth**, crown, 1653 (S.3214). *Dark grey brown patina, extremely fine and rare thus.*

\$8,000



1766\*

**Oliver Cromwell**, pattern shilling, 1658 (ESC.1005; S.3228). *Choice red grey toned brilliance, nearly FDC and rare as such.*

\$8,000

1767

**Charles II - Elizabeth II**, crowns, 1677 (S.3358), 1890 (S.3921), 1897LX (S.3937), 1935 (2) (S.4048), 1951 (S.4111), 1953 (3) (S.4136), 1960 (S.4143), 1965 (S.4144), 1972 (S.4226). *Fair - extremely fine.* (12)

\$200

Ex Bentleigh Collection.

1768

**Charles II - Elizabeth II**, half farthing, 1844 (S.3951); farthings, 1672, 1720, 1754, 1821, 1931, 1944 (S.3394, 3660, 3722, 3822, 4061, 4116) (6); pennies, 1841 no colon after REG, 1967 (S.3948, 4157) (2); brass threepence, 1967 (S.4153); fifty pence, 1973 EEC (S.4224) (2); also Norfolk, Norwich City farthing, 1668 (W.226/7), Great Yarmouth Borough farthing in brass, 1667 (W.284/5). *Very good - uncirculated.* (14)

\$100



1769\*

**James II**, crown, second bust, 1687 tertio (S.3407; ESC 78). *Toned, fine/good fine.*

\$350

Ex Noble Numismatics Sale 78B (lot 2169) W.H.Lampard Collection and Sale 111 (lot 1531), previously from Goldbuyers, Wellington coin dealers, purchased in 1989.



1770\*

**William and Mary**, halfcrown, first busts, 1689, shield with pearls, caul only frosted (S.3434). *Even grey toning, nearly extremely fine.*

\$600



1771\*

**William III**, shilling, third bust, 1697 (S.3505). *Adjustment marks, full mint bloom, nearly uncirculated.*

\$500

Ex Noble Numismatics Sale 101 (lot 2072) and Sale 111 (lot 1546).



1772\*

**William III**, fifth bust, shilling, 1700 (S.3516). *Grey patina, extremely fine.*

\$400



1773\*

**William III**, sixpence, third bust, 1697 GVLIEIMVS (S.3538). *Minor planchet clip, last two date figures not struck up, otherwise full mint bloom, uncirculated.*

\$150

1774

**William III - Queen Victoria**, assorted silver minors, mostly Maundy issues, pennies 1772, 1800, two pence 1701, 1832, 1838, threepences 1701, 1763, 1887 (normal head), 1896, fourpence (currency type) 1835. *Very fine - uncirculated.* (10)

\$500

1775

**William III - George V**, farthings, 1749 (S.3722), 1853 (S.3950); halfpennies, 169\_ (S.3554), 1853 (S.3949), 1911 (S.4056); penny, 1899 (S.3961); sixpence, 1711 (S.3619); Elizabeth II, pattern 2003 euro proof set of nine coins from one cent to five euros, several as bimetallic issues. *Fair - FDC.* (16)

\$120

1776

**Anne**, pre-Union, halfcrown, 1707 sexto, roses and plumes (S.3582). *Nearly fine.*

\$120





1777\*

**George I**, first bust, shilling, 1723, SSC (S.3647); **George III**, sixpence, 1787, without semee of hearts (S.3748). *Shilling toned, good very fine - nearly extremely fine.* (2)

\$120

1778

**George I - Queen Victoria**, various minors in silver, some mounted, model penny, medalets (5), includes 1723SSC sixpence, Maundy penny, 1723, shilling, 1745 Lima, threepence, 1762, halfpenny and farthing, 1799, farthing, 1807, groat, 1845 (good very fine), also Kwang Tung five cents. *Fair - extremely fine.* (31)

\$200



1779\*

**George II**, old head, halfcrown, 1746 Lima (S.3695A). *Very fine.*

\$170



1780\*

**George II**, young head, shilling, 1741, roses (S.3701). *Full toned mint bloom, good extremely fine or nearly mint state.*

\$500

Ex Noble Numismatics Sale 111 (lot 1581) and Fulton Collection with Seaby ticket, 1952.

1781

**George II**, sixpence, 1758, halfpenny, 1730 (S.3711, 3717) (2); **George III**, cartwheel twopence, 1797, halfpenny, 1806 three berries (S.3776, 3781) (2); **George IV**, sixpence, 1826 (removed from coin mount) (S.3814); **Queen Victoria**, sixpence, 1863, fourpence, 1854, Maundy twopence, 1900, half farthing, 1844, third farthing, 1844 (S.3908, 3917, 3919, 3951, 3952) (5); **George V**, sixpences, 1930, 1934, threepences, 1926, 1931, pennies, 1912H, 1918H, 1918KN, 1919H, one third farthing, 1913 (2) (S.4040, 4041, 4035, 4042, 4052 [3], 4053, 4062 [2]) (10); also **Queen Victoria**, model quarter farthing, 1848. *Poor - good very fine.* (21)

\$100

1782

**George III**, shilling, 1787, with semee of hearts (S.3746); Maundy threepence 1763 (2) (S.3763) and penny, 1772 (S.3759). *Fine - good very fine.* (4)

\$120



1783\*

**George III**, emergency coinage, silver dollar with oval countermark on a Charles III Mexico City eight reales, 1794FM (S.3765A). *Old scratch under chin, toned, good very fine.*

\$500

Ex B.J.Hibbard Collection.



1784\*

**George III**, emergency issue, dollar (current for 4/9), oval countermark on Peru, Charles III, eight reales, 1792IJ (Lima) (S.3765A). *Toned, very fine and scarce.*

\$900

Ex Noble Numismatics Sale 111 (lot 1591) W.J.D.Mira Collection.



1785\*

**George III**, emergency issue, dollar with octagonal countermark on Mexico, Charles III, eight reales, 1802FT (S.3766). *Obverse rubbed, considerable mint bloom on reverse, good very fine/extremely fine.*

\$900

Ex Noble Numismatics Sale 111 (lot 1592) and previously a private purchase from Monetarium.



1788\*

**George III**, Bank of England, dollar or five shillings, 1804, leaf to left side of E (S.3768). *'E' impressed on King's cheek, edge knocks, score mark in both fields, otherwise very fine.*

\$200



1786\*

**George III**, emergency issue, dollar with octagonal countermark on Charles III Mexico City Mint eight reales, 1802FT (S.3766). *Toned, nearly very fine.*

\$900

Ex B.J.Hibbard Collection.



1789\*

**George III**, Bank of England, three shillings, 1811 (S.3769). *Scratch and small rim nick on reverse, cleaned, good extremely fine.*

\$200



1787\*

**George III**, emergency issue, half dollar, oval countermark on a Spain, Charles III, four reales, 1792MF (Madrid Mint) (S.3767). *Engraved with script MG surrounded by floral flares as decorative, toned, good fine and scarce.*

\$650

Ex Noble Numismatics Sale 111 (lot 1594) W.J.D.Mira Collection.



1791\*

**George III**, Bank of England, one shilling and sixpence (or eighteen pence) 1811 (S.3771). *Iridescent tone, uncirculated.*

\$300

Ex Eric Horwood Collection, Noble Numismatics Sale 90 and C.Wolzack Collection, Noble Numismatics Sale 96 (lot 2499).

1792

George III, Queen Victoria, George V, George VI, Bank of England token, one shilling and sixpence, 1816 (S.3772); florins, 1897, 1900, 1917 (S.3938); double florin, 1889 (S.3923); halfcrown, 1918 (S.4011); crowns, 1935 (S.4048), 1937 (S.4078) (2), proof-like, 1951 (S.4111) (2) a small group of Maundy money (10) including fourpence, 1845; threepence, 1894; twopence, 1838, 1841, 1871; three halfpence, 1834, 1838, 1839, 1843, 1863. *Poor - nearly FDC.* (21)

\$120



1793\*

George III, cartwheel twopence, 1797 (S.3776) engraved around edge 'Emma.Mary.Durieu.Born 10 March 1819'. *An interesting memento for the birth of a child, very fine.*

\$200

1794

George III, cartwheel penny, 1797 (S.3777). *Good fine.*

\$100



part

1795\*

George III, new coinage, crown, 1819 LIX, no stops on edge, 1819/8 overdate (S.3787). *Nearly very fine; good.* (2)

\$170



1796\*

George III, new coinage, crown, 1820 LX. *Extremely fine.*

\$270

1797

George III, new coinage, crown, 1820 LX (S.3787); George IV, crown, 1822 tertio (S.3805). *Very good.* (2)

\$80

1798

George III, new coinage, large or bull head, halfcrown, 1817 (S.3788). *Very fine.*

\$100



1799\*

George III, specimen set of cartwheel copper coins, 1797, twopence (Peck 1077 with obverse KT1b), penny (Peck 1132), pattern halfpenny (Peck 1157) and pattern farthing (Peck 1198) (S.3776, 7, plus patterns). *In near contemporary shagreen fitted case (damaged), uncirculated - FDC and rare.* (4)

\$2,750

With Spink ticket.



1800\*  
**George IV**, halfcrown, bare head, 1825 (S.3809). *Grey tone with underlying mint bloom, small edge nick at 2 o'clock on obverse, otherwise nearly uncirculated.*

\$400

Ex Noble Numismatics Sale 111 (lot 1620).



1801  
**George IV**, copper penny, 1827 (S.3823). *Nearly very fine and rare.*

\$350



part

1802\*  
**George IV - George V**, third farthing 1827 (illustrated), half farthing 1828 (illustrated); farthings 1821, 1826, 1834, 1853 others to 1934. *Very fine - uncirculated.* (12)

\$400

1803  
**William IV - George VI**, halfcrown, 1915 (S.4011); two shillings (florin), 1945 (S.4081) (2); shilling, 1880 (S.3983); sixpence, 1834 (S.3836), 1909 (S.3983), 1912 (S.4014), 1936 (S.4041), 1945 (S.4084); twopence, 1868 soldered (S.3919); three half pence, 1843 damaged (S.3915); farthing, 1878 (S.3958). *Fine - uncirculated.* (12)

\$80

1804  
**Queen Victoria**, young head, halfcrown, 1885 (S.3889); Edward VII, halfcrowns, 1902 and 1907 (S.3980). *Nearly fine - good very fine.* (3)

\$100

1805  
**Queen Victoria**, Godless florin, 1849, Gothic florin, mdccclxxii (1872) (S.3889, 3892) (2), young head, shilling, 1844 (S.3904), Jubilee head, crowns, 1890, 1891, double florin, 1888, shilling, 1890 (S.3921 [2], 3923, 3927) (4), old head, halfcrown, 1893 (S.3938); Edward VII, halfcrowns, 1907, 1909, shillings, 1902 (2), 1907 (S.3980 [2], 3982 [3]) (5); George V, halfcrown, 1929 (S.4037); Elizabeth II, halfcrown, 1956 (S.4145). *Good - good very fine.* (15)

\$150

1806  
**Queen Victoria**, Jubilee coinage, crown, 1887 (S.3921); George V, fourth coinage, florin, 1930, farthing, 1931 (S.4038, 4061) (2); George VI, first coinage, crown, 1937, farthing, 1939 (S.4078, 4116); Elizabeth II, 1956 (S.4159). *Very fine - uncirculated.* (6)

\$90

1807  
**Queen Victoria**, Jubilee coinage, double florin, 1888, 1889 (S.3923). *Good - very fine.* (2)

\$100

Ex G.Davies Collection.



part

1808\*  
**Queen Victoria**, Jubilee coinage, florin, 1887 (S.3925) (2); shilling, 1892 (S.3927). *One florin with tone spot on reverse, shilling polished, very fine - good extremely fine.* (3)

\$100

1809  
**Queen Victoria**, Jubilee coinage, 1889 (S.3921); George V, first coinage, threepences, 1912, 1919, fourth coinage, halfcrowns, 1929, 1936, sixpence, 1936 (S.4015 [2], 4037 [2], 4041) (5); George VI, first coinage, halfcrowns, 1937, 1939, 1944 (2), 1945, florins, 1942, 1944, 1945, sixpence, 1943, threepence, 1937, Festival of Britain, crown, 1951 (S.4080 [5], 4081 [3], 4084, 4085, 4111) (11); Elizabeth II, second issue, proof halfcrown, 1970 (S.4145). *The first with hairlines and a few scratches on obverse, otherwise good very fine - FDC.* (18)

\$150

1810  
**Queen Victoria**, old head, halfcrowns, 1895, 1896, 1897, 1898, 1899, 1900 (2) and 1901. *Fine - nearly extremely fine.* (8)

\$100



1811\*  
**Queen Victoria**, old head, florin and shilling, 1893 (S.3939, 3940). *Toned uncirculated.* (2)

\$150

1812

**Queen Victoria**, young head, half farthings, 1842, 1844 (2), third farthing (bronze), 1878 (S.3951, 3960). *Fine - extremely fine.* (4)

\$70



1813\*

**Queen Victoria**, half farthing, 1856 large date (S.3951). *Small digs on obverse, otherwise fine and scarce.*

\$50

1814

**Queen Victoria**, quarter farthings, 1839, 1851, 1852 and 1853 (S.3953). *Fine - nearly extremely fine.* (4)

\$100

1815

**Queen Victoria - Elizabeth II**, 1885-1967, pennies, halfpennies, farthings, mixed quantities of assorted dates, mostly George V and George VI issues. *In two maroon albums, poor - extremely fine.* (610, tot wt 6.5kg)

\$150

1816

**Queen Victoria - Elizabeth II**, pennies, 1884-1967, noted Edward VII 'baldies as used for two-up' (82). *In 2x2 holders, very good - nearly extremely fine.* (227)

\$100

1817

**Queen Victoria - Elizabeth II**, halfpennies, 1874-1967. *In 2x2 holders, very good - extremely fine.* (122)

\$50

1818

**Queen Victoria**, bronze farthings, 1860, 1861 (3), 1862, 1863 (2), 1864 plain 4 (2), 1865, 1866 wide and narrow 66, 1867, 1868, 1869, 1872, 1873 normal date (13), 1875 (BMC.1890A), 1878, 1879, 1880 (2), 1883, 1884, 1885, 1886 (6), 1887 (3), 1888, 1890, 1891, 1892, 1893 (2), 1894 (3) (S.3958), 1874H, 1875H (2 varieties), 1876H (2 REG varieties), 1881H, 1882H (2) (S.3959); old head, 1895, 1896, 1897, 1898, 1899, 1900 (3), 1901 (5), in coin envelopes and a plastic sheet. *Very good - extremely fine.* (77)

\$120

1819

**Queen Victoria - Elizabeth II**, farthings, 1860-1955, incomplete and some duplicates, bun head (16), old head (10), Edward VII (20), George V (21), George VI (16) and Elizabeth II (5). *Fine - extremely fine.* (88)

\$70

1820

**Queen Victoria**, farthing, 1893 (S.3958); **George V**, penny, 1936, halfpenny, 1935, farthing, 1934 (S.4055, 4058, 4061) (3); **George VI**, threepences, 1937 (3), pennies, 1937 (2), 1938, farthings, 1937 (2), 1944, 1949, 1950, 1952 (S.4112 [3], 4114 [3], 4116 [3], 4119 [3]) (12); **Elizabeth II**, farthing, 1955 (S.4159); also commemorative crowns, 1951, 1953, 1960, 1965 (8), 1972 (2), 1977 (2), 1981 (S.4111, 4136, 4143, 4144 [8], 4226 [2], 4227 [2], 4229) (16). *The copper mostly with some or full mint red, extremely fine - uncirculated.* (33)

\$60



1821\*

**Edward VII**, crown, 1902 (S.3978). *Cleaned, good very fine.*

\$120

Ex J.F.Brown Collection.



part

1822\*

**Edward VII**, shilling, 1906 (S.3982), sixpence, 1902 (S.3982), also **Queen Victoria**, threepence, 1891 (S.3931). *Extremely fine or better.* (3)

\$150

1823

**Edward VII**, Maundy set, penny - fourpence, 1902 (S.3985). *Uncirculated.* (4)

\$150

1824

**Edward VII**, Maundy set, penny - fourpence, 1903 (S.3985). *With case of issue, lid of case broken from hinge and damaged on top, nearly uncirculated - uncirculated.* (4)

\$120

1825

**Edward VII - George VI**, silver threepences, 1902, 1903, 1906, 1911, 1912 (2), 1913, 1915 (2), 1916, 1917, 1918 (2), 1919, 1928, 1942 (2), 1943 (2), brass 1946 (2) (S.3984, 4015, 4042, 4085, 4112). *Very good - extremely fine, the last scarce.* (21)

\$50

1826

**George V**, first coinage, halfcrown, 1918 (S.4011), fourth coinage, halfcrown, 1936 (S.4037); **George VI**, first coinage, crown, 1937, florin, 1944, shilling, 1942 (S.4078, 4081, 4082) (3), first issue, farthing, 1952 (S.4119) (2); **Elizabeth II**, second issue, halfcrown, 1961 (S.4145), second issue, proof penny, 1970 (S.4157). *Very fine - FDC.* (9)

\$80



1827\*  
George V, fourth coinage, proof, wreath crown, 1927 (S.4036). *Extremely fine/good extremely fine.*  
\$300



1831\*  
George V, fourth coinage, wreath crown, 1933 (S.4036). *Lightly toned, reverse rim nick, nearly extremely fine.*  
\$320



1828\*  
George V, fourth coinage, wreath crown, 1928 (S.4036). *Very fine.*  
\$250



1832\*  
George V, fourth coinage, wreath crown, 1933 (S.4036). *Nearly very fine.*  
\$250



1829\*  
George V, fourth coinage, wreath crown, 1930 (S.4036). *Nearly very fine.*  
\$200

1833  
George V, Silver Jubilee crowns, 1935 (S.4048). *Toned, nearly uncirculated - uncirculated.* (2)  
\$80

1834  
George V - Elizabeth II, halfcrowns, 1930, 1931, 1937, 1942, 1947, 1953, 1955 and 1964 (S.4037, 4080 (2), 4101, 4137, 4145). *Fine - uncirculated.* (8)  
\$70

1835  
George V - Elizabeth II, threepences, 1912, 1917, 1937, 1953; sixpences, 1918, 1931, 1942, 1946; shilling, 1928; halfcrowns, 1940, 1945 (2), 1946. *In 2x2 holders, good - extremely fine.* (13)  
\$50



1830\*  
George V, fourth coinage, wreath crown, 1931 (S.4036). *Very fine.*  
\$300



1836\*  
George V, penny, 1930, (S.4055). *Brilliant, about full mint red, usual minor surface handling scratches, otherwise uncirculated and very scarce.*  
\$150

1837  
George V, farthings, 1931 (S.4061). *Full mint red, uncirculated.* (10)  
\$100

1838

**George VI**, mint set, 1937, crown to farthing. *Uncirculated.* (10)

\$150

Ex V.B.Short Collection.

1839

**George VI**, Maundy set, penny - fourpence, 1937 (S.4086). *With case of issue, and Seaby invoice and ticket, coins toned and with some spotting, extremely fine.* (4)

\$150

1840

**George VI**, crown, 1951 Festival of Britain (S.4111) (2); **Elizabeth II**, proof set, 1970 (S.PS20), crowns, 1953, 1965 (3), 1980 (2), 1981 (2) (S.4136, 4144 [3], 4228 [2], 4229 [2]) (8), five pounds, 2012 Queen's Diamond Jubilee (S.4569); Britains First Decimal Coin sets (3, one missing two coins); modern medallions in cases, Windsor Castle (3), Tower of London 1952-77, Royal Wedding 1986; also official Maundy Money cases (3, all with foxing on lid lining). *Mostly uncirculated.* (20 + 3 Maundy cases)

\$50

1841

**George VI**, pennies, 1946, 1949 (10) (S.4114, 4117 [10]) (11); **Elizabeth II**, pennies, 1962 (S.4157) (10). *The first toned, the rest mint red uncirculated.* (21)

\$80

1842

**Elizabeth II**, mint sets, 1953, halfcrown to farthing, two of each. *One threepence spoilt, otherwise uncirculated.* (18)

\$80

Ex V.B.Short Collection.

1843

**Elizabeth II**, proof sets, 1970, 1971, 1994 (red case) (S.PS20, 21, 54) (3); mint one pound, 1983 (S.4221); mint crowns, mostly cased, 1953 (2), 1965 (2), 1972, 1977 (4), 1980 (3), 1981 (4) (S.4136 [2], 4144 [2], 4226, 4227 [4], 4228 [3], 4229 [4]) (16); proof fifty pence, 1973 EEC (S.4224); first decimal coins set (2); brass threepence set, 1953-1967 (cased, this crazed); From old pennies to Decimal pence set in folder with last Lsd coins and 1996 decimal coins to one pound; also, Alderney, proof silver two pounds, 1994 (KM.7a); Guernsey, proof silver two pounds, 1994 (KM.56a); Isle of Man, proof silver twenty five pence, 1975 and proof silver commemorative crowns, 1974, 1976 (2) (KM.31a, 30a, 37a [2]) (4). *In cases and packets, the Isle of Man cases affected by foxing, the threepence set good - very fine, the rest uncirculated - FDC.* (31)

\$200

1844

**Elizabeth II**, Charles and Diana commemorative silver proof medallions, cased and boxed (10), 1981; cupro-nickel issues in presentation folder (3), another for 80th Anniversary of Queen Mother 1980; 1972 proof set in encased plastic and packaging; United States, silver dollar 1971S in sealed plastic holder and box; Australia, pre-decimal coins low silver \$0.70; New Zealand cupro-nickel (9), Australian pennies (6) and 1988 bicentenary copper unissued presentation medal, cased. *Most in cases and packs of issue, uncirculated - FDC.* (37)

\$150

1845

**Elizabeth II**, a group of one pounds (3), two pence (11) and one penny (12), all with small round printed political stickers attached to the obverse of each coin with various 'No Euro' statements such as 'Pounds For Ever Euros Never', 'Save the Pound', 'Just Say No', 'Euro Say No', 'Pounds Not Euro'. *Fine - very fine, an interesting group in today's political climate in the UK.* (26)

\$50



part

1846\*

**Tokens**, 17th century, Somerset, City of Wells, farthing, 1669 (W.301); 18th century, farthing, 1794, Hampshire; halfpennies, Hampshire (D.H.53, 74, 79, 89); Kent (D.H.13); Anglesey, penny, 1788; 19th century; in packets, described and all attributed, pennies (19, including five of Cornwall), halfpennies (11, including three of Isle of Man), farthings (2), unofficial farthings (4), and Middlesex silver shilling, 1811 (D.14). *Poor - extremely fine.* (45)

\$400

1847

**Somersetshire**, Bath, W.Gye halfpenny, 1794 (D & H 32a). *Uncirculated.*

\$100



part

1848\*

Scotland, Kirkcudbrightshire, Gatehouse halfpenny, 1793 (D.H.1); Lanarkshire, Glasgow, halfpennies, 1791-5, (D.H.2, a, 3 (2), a, c, 4, 5, 6a, 7a), farthings, 1780, 1791, 1799 and undated (D.H.11, 18, 20, 21, 22, 23, 26-30, 30 upset, 32, 32/3, 33, 34, 35, 39, 42, 43, 45, 46, 46 upset, 47, 47 edge clip, 48, 48 upset, 48 edge clip, 50). *Fine - good extremely fine.* (40)

\$650

Ex Alexander Collection.



part

1849\*

Scotland, Linlithgowshire, Linlithgow, farthing undated (D.H.3); Lothian, Edinburgh, halfpennies, 1790/1797 (D.H.1, 2, 3, 7, 10, 20, 23, 24, 25, 27, 28, 29, 30, 32-5, 37-40, 42, 45, 47b (2), 58-61), farthings, 1796 for first, others undated (D.H.69, 76, 88, 112a, 115, 127, 128). *Good fine - extremely fine.* (37)

\$600

Ex Alexander Collection.



part

1850\*

Scotland, Perthshire, Perth halfpennies, 1797 (D.H.1 countermarked MK, 5, 9, a (plain edge)), Renfrewshire, farthing (D.H.6), farthings, not local (D.H.2 (2), 3, 8), 19th century Glasgow, 1815 (D.H.3), Hamilton, 1814 (D.H.4), Lothian, Leith farthing, 1819 (D.H.1). *Fine - good very fine.* (12)

\$240

Ex Alexander Collection.



1851\*

London, Harley Street, The Quartett Society, admission passes made of ivory, 1845, both inscribed "Honor to Beethoven", 48 (number), "Quartett Society", the white token inscribed SR on reverse, the red token inscribed "Transferable", 35mm wide. *Both very fine, slight crack on white token, rare.* (2)

\$500

These tokens were produced for admission to the Beethoven Quartett Society performances at 76 Harley Street promoted by Thomas Alsagar, co-owner of The Times newspaper. It is rare to have two tokens with matching numbers.

1852

Jetons, counters, model coins, advertising; In Memory of The Good Old Days; Keep Your Temper; To Hanover. *Poor - very fine.* (217)

\$120

1853

Twentieth century checks, market, canteen, co-operative and pub, all described in 2x2 holders in a Lighthouse tray. *Fine - extremely fine.* (20)

\$120





1854\*  
**Tokens, Universal Aircraft Ltd, Factory Token 'No 3',** brass (24mm); another, Armstrong Whitworth Aircraft Co Ltd factory token '7982', bronze (30mm), both holed for suspension. *Fine - very fine and rare.* (2)

\$100



1855\*  
**Scotland, David II, (1329-1371) Berwick (?) Mint, silver halfpenny (0.75g), first issue, 1330-3, crowned bust left with sceptre, MONETA REGIS D / AVID SCOTTOR, four mullets of five points as S.5084 (S.5080; Coin Craft SD2HD-005).** *Very good and very rare.*

\$500

Ex Noble Numismatics Sale 93 (lot 2561).



1856\*  
**Scotland, Alexander III, 1249-1286), second coinage, silver penny, (c1280).** *Very fine.*

\$200



1857\*  
**Ireland, Henry III, (1216-1272), penny (1.47g), Dublin, class 1a, moneyer RICARD (S.6235).** *Nearly extremely fine.*

\$250

Ex Australian Coin Auctions Sale 311 (lot 2225) and Noble Numismatics Sale 111 (lot 1715).



1858\*  
**Ireland, Henry III, (1216-1272), silver penny, Dublin, Moneyer RICARD, type 1a (S.6235).** *Toned, very fine or better.*

\$150



1859\*  
**Ireland, Henry III, (1216-1272) penny, class 1b, Dublin, RICARD ON DIVE (S.6236).** *Lightly toned, good very fine.*

\$250

Ex C.S.Shute Collection.



1860\*  
**Ireland, Edward I, (1272-1307), second coinage, 1279-1302, silver penny, Class 1a, early issue 1279-1284 (S.6246).** *Toned, very fine.*

\$150



1861\*  
**Ireland, James II, Civil War coinage, (1689-91), gunmoney crown, 1690 (S.6578).** *Well struck up for this, even red brown patina, nearly extremely fine and rare thus.*

\$600



1862\*  
**Ireland, James II, Civil War coinage (1689-91), gunmoney, small size halfcrowns, May 1690 (script) (S.6580B), another, F.R.A.N (S.6580BB).** *Nearly extremely fine.* (2)

\$300

Ex Status Sale May 2011 (lots 7956, 7958) and Brian Bolton Collection.



1863\*  
**Ireland**, James II, Civil War coinage (1689-91), gunmoney, small size halfcrown, Aug 1690 (S.6580G), struck in Limerick. *Red and brown, nearly uncirculated and rare.*  
 \$500

Ex Noble Numismatics Sale 88 (lot 3712) and Brian Bolton Collection.



1864\*  
**Ireland**, James II, Civil War coinage, (1689-91), gunmoney large size shilling, Jan 1689 (S.6581M). *Crimson and brown with traces of original mint red, nearly uncirculated and rare thus.*  
 \$300



1865\*  
**Ireland**, James II, Civil War coinage (1689-91), gunmoney, small size shillings, May 1690 (S.6582D) and June 1690 (S.6582G). *Extremely fine.* (2)  
 \$350

Ex Status Sale May 2011 (lots 7958 and 7959) and Brian Bolton Collection.



1866\*  
**Ireland**, George II, farthing, 1760 (S.6611). *Grey brown patina, extremely fine.*  
 \$200

Ex Noble Numismatics Sale 90 (lot 1822) and Brian Bolton Collection.



1867\*  
**Ireland**, George III, Bank token, ten pence Irish, 1813 (S.6618). *Grey toned nearly extremely fine.*  
 \$80

Ex Brian Bolton Collection.



1868\*  
**Ireland**, George IV, penny, 1822 (S.6623) and halfpenny, 1823 (S.6624). *The first proof-like, bluish brown toning, nearly uncirculated; second brown, extremely fine.* (2)  
 \$500

Ex Brian Bolton Collection.

1869  
**Isle of Man**, James Stanley, halfpenny, 1733 (S.7401); James Murray, penny and halfpenny, 1758 (S.7411, 7412); George III, penny and halfpenny, 1786 (S.7413, 7414), 1798 (S.7415, 7416 (2)); halfpenny, 1813 (S.7416), 1839 (S.7418); farthing, 1839 (S.7419); Bank token coinage, halfpenny and penny, 1811 (KM.Tn3, 10); halfpenny, 1831 (KM.Tn21); Douglas Office, halfpenny, 1811 (KM.Tn4). *Fine - good very fine.* (15)  
 \$300

1870  
**Channel Islands**, Alderney, proof silver piedfort two pounds, Queen Mother's Ninetieth Birthday, 1990. *In cases of issue with certificates, both cases damaged, FDC.* (2)  
 \$100

## GREAT BRITAIN HISTORICAL MEDALS



1871\*  
**Charles II, Earl of Shaftesbury, Acquittal of High Treason, 1681**, in silver (40mm) by G.Bower (Eimer 261; MIi 583/259). *Good*.

\$100



1872\*  
**Anne, Coronation, 1702**, in silver (35mm) by J.Crocker (MI ii, 228/4, Eimer 390) obverse, draped bust left, reverse, Pallas hurling thunder at a two headed, four armed monster. *Edge nicks, bluish golden tone, otherwise extremely fine*.

\$550

An Oxford University English researcher has discovered that the medal issued to mark Queen Anne's coronation was designed by Isaac Newton. The researcher came across a manuscript in the National Archives in Kew with sketches and notes by Newton, who was Master of the Mint when Anne was crowned in 1702. Together with a photocopy of the article published 20th March 2015.



1873\*  
**Anne, British Victories, 1704**, in silver (40mm) by G.Hautsch, obverse, draped bust left, reverse, Britannia seated beneath a palm tree decorated with three shields (MI ii, 270/70, Eimer 411). *Light edge nicks, extremely fine*.

\$750

1874  
**Lord Carteret, 1st Earl Granville, 1744**, in bronze (55mm), by J.Dassier, obv. bust facing right, rev. legend in ornamental device, (Eimer 584; MI.586/228). *Extremely fine*.

\$100

1875

**Birmingham Pitt Club, 1814**, in silver (50mm) by T.Webb, obverse bust facing left, reverse legend in wreath, (BHM 834). *Extremely fine, toned*.

\$100



1876\*

**Waterloo medal, 1815** in bronze (133mm) by B. Pistrucci (BHM 870; Eimer 1067) made as electrotype, two copper shells joined and edge smoothed to hide join line (535g). *A later production from the original electrotypes of the 1840s, good very fine*.

\$300

1877

**Commemorative medals and tokens**, a small group dating from 1815-1920, mostly 19th Century base metal, an interesting group. *Fine - extremely fine, some scarce*. (17)

\$120

1878

**Constitution Given to the Ionian Islands, 1817**, in bronze (41mm), by Depaulis, obverse Britannia, reverse seven females representing the Islands, (BHM 958, Eimer 1094). *Good very fine*.

\$80

1879

Centenary of Foundation of Blue Coat Charity School, Birmingham 1824, in white metal (48mm), by Ottley, obverse view of school, reverse legend (BHM -); Completion of Birmingham Grammar School 1837, in white metal (48mm), by Halliday, obverse bust of Edward VI, reverse view of school (BHM 1753); The Harris Free Public Library and Museum, in bronze (52mm), obverse view of building, reverse bust of Earl of Lathom (BHM 3114A); Albert Edward Dock Opened 1884, in silver (32mm), obverse arms, reverse legend (BHM -); Burrator Reservoir Plymouth 1898, in bronze (45mm), obverse view of reservoir, reverse legend (BHM 3635). *Good very fine or better.* (5)

\$100



1880\*

**John Scott, Earl of Eldon and Lord High Chancellor, 1827** in bronze (48mm, 68.24g) by C.Voight (BHM 1308). *Nearly uncirculated.*

\$200

Ex ANS duplicates CNG Sale, 19/9/12, lot 1611 and Terry Naughton Collection.



1881\*

**Royal Berkshire Horticultural Society, Wallingford, established 1831, in silver (76mm) by G.R.Collis, obverse, conjoined busts of Victoria and Albert, reverse, pair of cornucopia surrounding Coat of Arms in centre, portcullis below. Toned, scratch on Albert's face, nearly uncirculated.**

\$500

1882

**Sunday Schools, 50th Anniversary 1831, in silver (39mm), by Ingram, obverse bust of Robert Raikes, reverse legend, (BHM 1551, Eimer 1252); another, in white metal (39mm), by Halliday, obverse bust of James Luckcock, reverse legend (BHM 1552); another, in white metal (38mm), by Halliday, obverse bust of Robert Raikes, reverse busts of William IV and Adelaide (BHM 1553). *Extremely fine and rare.* (3)**

\$150



part

1883\*

**Free Grammar School, Birmingham, 1836**, in white metal (51mm), by Davis; **Preston Exhibition of Arts & Industry, 1865**, white metal (45mm) by A. Moore; **Edward VII, Coronation, 1902**, in silver (31mm); also, coin weight for £3.12s. *Very fine - nearly uncirculated.* (4)

\$100

1884

**Peace in Europe Commemoration, 1856**, in white metal (32mm), by S. & J. Hill, Birmingham, holed for suspension; **Lord Nelson's Flagship Foudroyant, 1897**, in copper from vessel after breaking up (37mm) (BHM 3613; Eimer 1813); **The B.C.S. Battle of Waterloo Medal, undated (1970)**, proof in silver (44mm), by Britannia Commemorative Society, in sealed plastic frame; **Royal Society of London's Expedition to Tuvalu, 1977**, in silver (38mm); also **George III, threepence, 1763 (S.3753)**; **18th century condor token, Hampshire halfpenny D&H65 (BHM 434)**, holed at top edge. *Good - FDC.* (6)

\$100

Ex Wal Shannon Collection.



1885\*

**Scotland, Royal Caledonian Curling Club District, medal in silver (51mm with mount, 40mm without)** by Sclater circa 1860. *Set in ornate thistle surround mount, 'The Royal' at top both sides, nearly extremely fine.*

\$100

1886

**Lodge jewels, c1880s, Masonic, and Ancient Order of Foresters, silver and silver gilt.** *Very fine - extremely fine.* (7)

\$100

1887

**Lodge jewels, Sons of the Phoenix, St Martins Unity Lodge No.4, handcrafted in silver and gold (drop 55mm)**, by Davis, Clerkenwell, on ribbon with bar and pin-back suspension, centre inscribed 'Presented/by the/Officers & Brothers/of the/St Martins Unity Lodge No 4/U.O.T.A.J.S.P. to P.G.N./Bro J.Mulligan/as a Mark of Respect for/Past Services/March 16th 1885'; another, **St Andrews Lodge, U.O.T.A.S.P., handcrafted in silver and gold (drop 80x80mm)**, by Davis, Clerkenwell, on ribbon (115x70mm) with bars and other silver adornments, centre inscribed 'Presented/by the/Officers & Brothers/of the/St Andrews Lodge No.44/U.O.T.A.S.P. P.G.N./Bro John Mulligan/for Past Services/March 27th 1888'. *Toned, very fine.* (2)

\$150



1888\*

**Anerley Bicycle Club**, (1888), prize medal in silver (39x45mm) with suspension ring, in the shape of a cross the obverse is intricately engraved with a central shield bearing the name, 'B/Anerley/C', reverse inscribed, 'One/Mile/Tricycle Handicap/K.E.Edge/2nd/June 27th/1888'. *Good very fine.*

\$100

Reported in The Mercury, Hobart, Tasmania on Saturday 19 March 1892 that Messrs K.E.Edge of the Sydney Bicycle Club (NSW) and Anerley Bicycle Club (London) and J.W.Keeling of the Ramblers' Bicycle Club (Hobart) started at Oatlands to ride the 50 miles road race. Mr Edge, riding a pneumatic tyred 'Marriott and Cooper's Safety' set the fastest time for this distance in Tasmania and Mr Keeling, riding a cushion tyred 'Raglan' set the fastest time for this distance by a Tasmanian cyclist.

K.E. Edge was at one time the General Secretary of the Anerley Bicycle Club and is no doubt related to S.F. Edge who was President of the same club in 1929 and was an outstanding rider for the club even as an 18-year old back in the 1880s.

Ex John Houstone Collection.



1889\*

**Masonic, Rose Croix 18th Degree jewel**, c1890, in silver gilt and enamel (80x70mm), by G.K. (G.Kenning, London). *Extremely fine.*

\$100

In a fitted case of Kenning, Goldsmith, London.

1890

**Bathing medal**, c1893, in white metal (51mm) by Ottley, obverse, a table of principal Bathing Places and their distance from London, commencing with Aberystwith and ending with Weymouth, English and Scotch (sic) Universities to left and right, in exergue I.Ottley, Medallist, Birmingham in three lines, reverse, an alphabetical listing of thirty two English towns and their distance from London in a concentric circle, starting with Berwick and finishing with York (unlisted in BHM and Eimer). *Nearly uncirculated.*

\$250

In a slab by NGC as MS64.

1891

**Army Temperance Medal India**, Army Temperance Association 1897, in silver (34mm), for one year's temperance, with suspension loop; silver Queen's South Africa Medal 1899, edges battered to make the medal considerably smaller and thicker, with suspension loop; also George III, cartwheel twopence, 1797 with initial 'G' inscribed on obverse to left of king's head. *The first very fine, the rest poor although second medal is sterling silver.* (3)

\$50

Ex John Houstone Collection.

1892

**Queen Victoria**, 1897, in white metal (36mm), privately issued to commemorate a golden wedding anniversary, obverse Victoria head veiled left, around Victoria Queen and Empress, reverse around Golden Wedding Spains Hall, 4th May 1897 in centre, 1847 - 1897 below, by Spink, London. *Extremely fine and rare in original leather pouch.*

\$100



lot 1893 next page (reverse)



1893\*  
**United Hospitals Athletic Club London, 1921**, in bronze (70mm), reverse inscribed, '1921/220 Yards/2nd/(Won By)/J C Ainsworth-Davis/St Barts'. *Good very fine.*

\$100

The club started on 31 may 1867 and hosted the annual United Hospitals athletics championships for its member medical schools.

The above medal winner, J.C.Ainsworth-Davis M.A., M.D., B.Ch. (Camb.), F.R.C.S. (Eng. & Ed.) wrote books such as *Prevention and Treatment of Urethral Stricture of Inflammatory Origin*, 1933, and *Essentials of Urology*, 1950. He also wrote numerous articles and was Urological Surgeon at The Bolingbroke Hospital London.



part

1894\*  
**Unity is Strength**, service medal in gilt silver and enamel (35x60mm oval) with blue ribbon attached, by Thomas Fattorini Limited, Birmingham, engraved on reverse 'For Honourable Service/as/Mayoress/of/Blantyne and Limbe/Mrs J.Rooney/1962-31st January 1963'; The Sheriff of Kent, fob in gilt silver, silver and enamel (23mm) by W.& A.M., with maroon ribbon and and enamelled bar 1934-35, engraved on reverse 'Colonel A.C.Davis/J.P./High Sheriff of Kent/1934-35'. *Extremely fine.* (2)

\$100

1895

**The Campbell Orr Challenge Shield**, in silver (29mm), hallmarked for Birmingham 1947 by V&S (Vaughton & Sons), with suspension loop, obverse, gold plated and fitted in the centre is the coat of arms of Birmingham with enamel highlights, reverse, wreath and inside is inscribed, '1948-49/Winners/B.&D.W.A.F.A./L.A. Yates'. *Some scuffing on reverse, otherwise good fine.*

\$50

B.&D.W.A.F.A. (Birmingham & District Works Amateur Football Association).

1896

**The Mountbatten Medallion History of Great Britain and the Sea**, eighty seven proof sterling silver medals from a set of one hundred (44mm; 37.8g each) (tot wt 3.288kg), issued by John Pinches Medallists Ltd 1974. *In four hardbound volumes, FDC.* (87)

\$2,000

1897

**The Empire Collection**, of twenty five gold plated sterling silver replica stamps by Hallmark Replicas, 1979-1981, (ASW nearly 14oz); also a single replica from the same collection, Jamaica GVR ten cents issue in original issue folder, and another from The Coronation Issue series, being Great Britain 25th Anniversary of Coronation five pounds, 1978, also in original issue folder, both of these gold plated sterling silver. *The set in plush case of issue, missing case key, some toning, foxing on plush cover and paperwork, otherwise uncirculated.* (27)

\$300

1898

**The Empire Collection**, of twenty five gold plated sterling silver replica stamps by Hallmark Replicas, 1979-1981, (ASW nearly 14oz). *In plush case of issue with case key, some toning, otherwise uncirculated.* (25)

\$280

CAPTAIN JAMES COOK MEMORABILIA  
FROM THE COLLECTION OF  
WAL SHANNON

CAPTAIN COOK MEDALS



1899\*

**First International Exhibition, James Cook Discovered N.S.W., 1879**, in white metal (39mm) (C.1879/7), by Evan Jones, obverse, bust of Captain Cook, reverse, Sydney Exhibition Building. *Pierced hole at E of Exhibition, otherwise very fine.*

\$100

1900

**First International Exhibition, James Cook Discovered N.S.W., 1879**, in white metal (39mm) (C.1879/7), by Evan Jones, obverse, bust of Captain Cook, reverse, Sydney Exhibition Building. *Pierced hole at O of International, dark toning and some areas of light oxidation, otherwise very fine.*

\$100



part

1901\*

**Captain Cook Centenary, 1888**, in gilt bronze (36x36mm), with suspension ring (C.1888/4); **Captain Cook Bi-centenary, 1970**, in oxidised silvered bronze (27x32mm), holed for use as keyring by Engelhard Industries (C.1970/76); **First Fleet Entering Pt Jackson 26th Jany 1788, (1988)**, in copper (70x41mm oval), edge number 028, by Hafner for Numismatic Association of Victoria. *The first nearly uncirculated, the second very fine, the last in pack of issue, uncirculated.* (3)

\$70

1902

**Capt Cook Landed 1770, Victoria a Separate Colony 1851, Greater Britain Exhibition, 1899**, in gilt (31mm) (C.1899/4); **Sydney Harbour Bridge, 1932, James Cook Baker Paddington, Captain James Cook R.N.**, in gilt (25mm) (C.1932/2). *The first with a few small verdigris spots, otherwise nearly uncirculated - uncirculated.* (2)

\$70



part

1903\*

**Establishment of the Commonwealth of Australia, 1901**, in gilt bronze (43mm) (C.1901/39), obverse, Captain Cook's bust left with anchor below and wreath around, reverse, half facing bust of Sir Henry Parkes, Father of Federation; another identical in oxidised silver with thicker planchet being 1951 restrike. *The first with most gilt missing, otherwise good very fine - extremely fine.* (2)

\$150



part

1904

**Captain Cook Bi-Centenary Celebrations, 1970**, for Council of Municipality of Randwick, in gilt (33mm) (C.1970/3); Botany Municipal Council, Concord Municipal Council, Gunning Shire Council, Citizens Committee of Rockdale, Snowy River Shire Council, South Sydney Municipal Council, Stroud Shire Council, all in gilt (30mm) (C.1970/8, 9, 10, 13, 14, 15, 16) (7), first, second and third pierced for suspension; **To Commemorate the Visit to The James Cook and Moorefield High Schools by the Royal Family**, in bronze (32mm) (C.1970/17), with suspension (not recorded in bronze); **Council of the Shire of Sutherland**, in gilt (30mm) (C.1970/34); **Municipality of Blacktown**, in silvered (25mm) (C.1970/74), with suspension. *Some with toning, the third heavily toned, but mostly uncirculated.* (11)

\$120





part

1905\*

**Bicentenary James Cook**, The Australian Numismatic Society, 1970, in bronze, oxidised silvered bronze, and another in silver (45x65mm) (C.1970/4), designed by James Berry. *The last with hairlines, the second with small scratch at top right edge that was probably done during manufacture, otherwise extremely fine - uncirculated.* (3)

\$150

The last ex Koppel Collection.



part

1906\*

**Captain James Cook**, Bi-Centenary of Landing in Australia, (1970), in silver, oxidised silver, and copper (38mm) (C.1970/5), edge numbers 42, 21, 33, by Stokes, issued by Melbourne Numismatic Society. *Uncirculated.* (3)

\$200

1907

**Captain Cook Bi-Centenary Celebrations**, Botany Municipal Council, 1970, in gilt bronze (30mm) (C.1970/8); **Captain James Cook Bi-Centenary**, The Sate Savings Bank of Victoria, 1970, in silver (38mm) (C.1970/22), cased; **James Cook, 1770-1970**, National Trust of Australia, in silver and bronze (52mm) (C.1970/32) (2), both in cases; **Bi-Centenary of Captain Cook's Landing**, Council of the Shire of Sutherland, 1970, in gilt bronze (30mm) (C.1970/38), with ribbon; **Captain Cook Bi-Centenary Celebrations NSW Australia**, 1970, in bronze (one in official case, one uniface with screw back for mounting on wooden base, and one cast [in unofficial case]) (C.1970/39) (3); also a pair of cufflinks by Marrickville Municipal Council, in gilt and enamel, featuring image of Captain Cook between kangaroo and emu, in case (this cracked). *The first very fine, the rest uncirculated.* (9)

\$120



part

1908\*

**Captain Cook Bi-Centenary Celebrations**, Yachting Regatta April, 1970, in bronze (38mm) (C.1970/18); **Captain James Cook Bi-Centenary**, 1970, in silver (38mm) (C.1970/22), by The State Savings Bank of Victoria; another similar but in gilt (34mm) (C.1970/23), by The State Savings Bank of Victoria; **James Cook Explorer & Navigator**, Bi-Centenary of James Cook's Journey to the South Pacific, 1970, in bronze (38mm) (C.1970/29), by The Historical Medal Society of Australia & New Zealand. *Uncirculated.* (4)

\$120

1909

**Captain Cook Bi-Centenary Celebration**, Solvol Commemoration Medallion, 1970, in aluminium (22mm) (C.1970/19) (2), with suspension (one with original plastic ribbon); **James Cook, 200th Anniversary of Australia**, cast in gilt bronze with rope surround (35mm), with suspension loop; another similar in bronze but uniface (44mm), pierced hole for suspension (C.1970/28) (2); **James Cook Explorer & Navigator**, Bi-Centenary of James Cook's Journey to the South Pacific, 1970, in bronze (38mm) (C.1970/29), by The Historical Medal Society of Australia & New Zealand; **ANPEX award medal**, 1970, in oxidised silver (33x45mm) (C.1970/46a), named to M.Juhl for Class IV Div. 1 Sect. a. *Uncirculated.* (6)

\$100



1910\*  
**Captain Cook Bi-Centenary, 1770-1970, Hurstville Municipal Council award medal, in gilded bronze (78x53mm) (C.1970/20), reverse inscribed, 'Presented to/ The Hon. P.H.Morton, M.L.A./On the occasion of his visit to/Hurstville/1.5.1970'. In case of issue, toning and small edge nick, otherwise extremely fine.**

\$100

Philip Henry (Pat) Morton was born in Lismore, NSW on 28 October 1910. He entered politics in 1944 as an Alderman on Mosman Municipal Council becoming Mayor two years later. He then entered state politics being elected as Liberal Party member for Mosman in 1947. After a few failed bids to be the party leader he was finally successful in 1955 and led the Liberal Party in two elections in 1956 and 1959, failing to win on both occasions. He was deposed by his deputy, Robin Askin and reverted to the party's back bench. When Askin led the Liberals to victory in 1965 he recalled Morton to the cabinet and he was appointed Minister for Local Government and Minister for Highways. He retired from parliament in 1972 and died at his Mosman home in 1999.



part

1911\*  
**Captain Cook Bi-Centenary, Hurstville Council Award, 1970, in bronze, and gilt bronze (53x78mm) (C.1970/20), both unnamed; ANPEX award medal, 1970, in oxidised silver (33x45mm) (C.1970/46a), named to M.Juhl for Class IV Div. 1 Sect. b. The first with some light verdigris and small dig probably in planchet before striking, the second with spotting on plain reverse, otherwise extremely fine - nearly uncirculated. (3)**

\$100



1912\*  
**Captain James Cook Bi-centenary, 1970, in gold (18ct, 52.02g, 38mm), by Stokes for the State Savings Bank of Victoria (C.1970/22). In case of issue, some light toned areas and small gold test mark on rim, otherwise uncirculated.**

\$1,900



part

1913\*  
**Capt James Cook, Aust Bi-Centenary, 1970, in bronze, oxidised silver, silver and gilded bronze (all 57mm) (C.1970/24), all inscribed around edge, '5th Anniversary Of Metropolitan Coin Club April 1970 G.H.B. W.J.M No.' (numbered in order of listing, 84, 84, S30, C4). Uncirculated. (4)**

\$300



part

1914\*

**Captain James Cook, 1728-1779**, issue 1970, in oxidised silvered and oxidised bronze (49mm) (C.1970/26) (2), obverse, bust of Cook right, reverse, H.M.S. Endeavour. *Uncirculated.* (2)

\$100

1915

**Captain Cook Bi-Centenary Celebrations**, Presented by the Shire of Shoalhaven, 1970, in bronze (38mm) (C.1970/27); Sutherland Shire Commemoration, Awarded by the Captain Cook Bi-Centenary Commemoration Committee, 1970, in gilt, silvered and bronze (38mm) (C.1970/33) (3). *Uncirculated.* (4)

\$100



part

1916\*

**Victorian Local Government, Captain James Cook**, 1970, in gilt aluminium (32mm) (C.1970/35); 200th Anniversary, Captain Cook Bi-Centenary Celebrations, 1970, in brass (30mm), another in cupro nickel (C.1970/38) (2), the last holed for suspension; Discovery 1770, Australian Bicentenary, 1988, in silver, silvered, gilt bronze and copper (31mm) (C.1988/B212) (4), also a lead pull of the obverse design, obverse, half length figure of Cook with ship and compass, reverse, bicentennial symbol; Australia Bicentennial Medal Collection issue for Captain Cook (undated), in cupro

nickel (27mm); Captain Cook's Birthplace Cottage Marton Opened, 1978, in gilt bronze (37mm), obverse, Cook's half figure right, reverse, museum cottage; James Cook Discoverer of New Zealand and Australia, undated, in gilt bronze (29mm), obverse, bust of Cook half facing right, reverse, ship, all text apart from Cook's name is in German. *Lead pull fine, the rest extremely fine - uncirculated.* (11)

\$120



1917\*

**Captain Cook 200th Anniversary**, 1970, in 18ct gold (2, one 44mm, 1.75oz; the other 32mm; 0.75oz) (C.1970/36, 37), by Matthey Garrett, both with edge number 849. *In case of issue with certificate number 849, uncirculated.* (set of 2)

\$2,800

1918

**Captain Cook 200th Anniversary**, 1970, in 18ct gold (32mm; 0.75oz) (C.1970/36), by Matthey Garrett. *In case of issue with certificate, uncirculated.*

\$1,200

1919

**Captain Cook Bi-Centenary Celebrations NSW Australia**, 1970, in silver (57mmx4.1mm thick; 95.88g) (C.1970/39), edge inscribed, 'J.H.Luscombe', Carlisle states only 43 with named edge. *In unofficial case, toned, extremely fine.*

\$100

J.H.Luscombe was the Town Clerk of the City of Sydney.



1920\*

**Captain Cook Bi-Centenary Celebrations NSW Australia, 1970**, in sterling silver (57mmx5mm thick; 100.08g) (C.1970/39). *Nicely toned, uncirculated.*

\$200

Note that this medal is struck on a thicker planchet than the named silver issues and is also edge marked St.Sil. No mention of it is made in Carlisle's reference book.



part

1921\*

**200th Anniversary of Discovery of East Coast of Australia, by Lt James Cook, 1970**, in 9ct gold (25.08g; 38mm), also in silvered and bronze (C.1970/40) (3). *Uncirculated.* (3)

\$450



1922\*

**Australia 1770, 1970**, in sterling silver (38mm), not listed in Carlisle, by Accent, obverse, small boat from sailing ship rowing to shore with threatening natives waiting, reverse, map of Australia and features of modern day Australia. *One time cleaned, otherwise extremely fine and scarce.*

\$100

Mintage: 18ct gold (1), 9ct gold (25), silver (50).

1923

**Captain Cook and other Australian Explorers, c1970s**, by Numismatic Association of Victoria, includes cased sets of two medals (51mm), for Captain Cook (edge no.128) and George Bass (edge no.106), in gilt bronze (C.C/1 and G/2, not listed in this finish) (2); George Bass in silver and bronze (C.G/2) (2), both edge no.114; John Oxley in silver and bronze (C.J/1) (2), both edge no.10; Charles Sturt in silver and bronze (C.C/4) (2), both edge no.49. *In set cases of issue, these with some foxing, the first set only minor, medals uncirculated.* (4 sets)

\$200

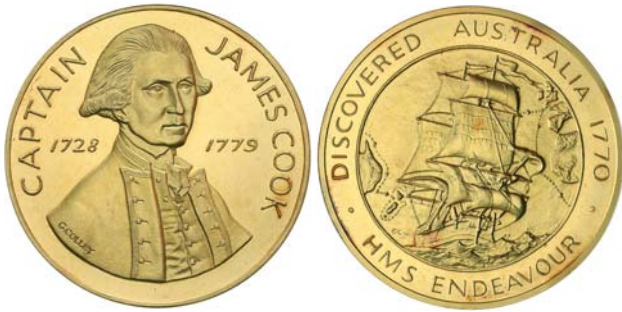


part

1924\*

**Captain James Cook R.N. F.R.S.**, undated (1970), in silver and bronze (51mm) (C.C/1), edge numbers 59 and 33, by Numismatic Association of Victoria. *In cases of issue, these with some marks, small mark on Cook's jaw on bronze medal, otherwise uncirculated.* (2)

\$80



1925\*  
**Captain James Cook 1728-1779**, (1970), in gold (999 (marked PUR); 29.76g; 40mm), by G.Colley, edge marked 144, obverse, bust of Captain Cook half facing right, reverse, HMS Endeavour. *Uncirculated.*

\$1,500



part

1928\*  
**James Cook Killed by the Indians**, 1979, in silver (edge no.68), and bronze (edge no.159) (57mm) (C.1979/8), edge impressed, 'The Metropolitan Coin Club of Sydney \* 1728-1978 \*\*\* 1779-1979 \*'. *Uncirculated.* (2)

\$250



part

1926\*  
**Bi-Centenary Discovery of Norfolk Island**, in oxidised silver (edge no.SO-328) and another in oxidised bronze, uniface with recessed area on reverse with plug hole marks at side where it has been attached to a plaque, no edge number (57mm) (C.1974/10). *Uncirculated.* (2)

\$70

1927  
**The Voyages of Captain James Cook**, (1978), proof medals in 24ct gold on sterling silver (38mm) (14 different), by Franklin Mint (Australia) edge mark FML, (tot wt approx 9oz). *One with a few tone spots, otherwise FDC.* (14)

\$200



part

1929\*  
**Death of Captain Cook, Discoverer of Australia**, (1979), in oxidised silvered (44mm), by C.A.Holman for John Pinches, obverse, bust of Cook half facing, reverse, a fallen Captain Cook with rifle and with native man standing over him; Captain James Cook, Australia Discovery Bicentenary, 1970, in cast bronze (51mm) (C.1970/25), with issue pack; The Circumnavigator Reaches Australia, (1970), in gold plated sterling silver (11.80g; 31mm), obverse, scene of Captain Cook setting foot on shore at Botany Bay; Captain Cook Navigator Extraordinary, (1970), in silver (37.34g; 44mm), by J.Pinches, edge number 1809. *Uncirculated.* (4)

\$100



part

1930\*

**The Arms of Captain Cook 1728-1779**, (1979), proof medal in gold (22ct; 40.8g; 45mm) edge number 0724, and another in silver (40.05g), by Pinches, (M B Ld) Mint Birmingham Ltd, obverse arms of Cook, reverse, Cook in boat rowing towards shore. *Some toning, otherwise FDC.* (2)

\$1,900



lot 1931 part

1931\*

**Decimal Coinage Introduced**, 1967, in silver and bright bronze (63mm) (M.1967/3), by The Royal Numismatic Society of New Zealand, reverse design includes fifty cents featuring Captain Cook's ship, Endeavour. *In cases of issue, uncirculated.* (2)

\$150



part

1932\*

**Bicentenary of James Cook's Rediscovery of New Zealand**, 1969, in silver and bronze (63mm) (M.1969/1), by James Berry and Royal Australian Mint, for Royal Numismatic Society of New Zealand. *In cases of issue one with foxing, the first medal with some small edge nicks and spotty tone marks on obverse, otherwise uncirculated.* (2)

\$100

1933

**James Cook Bi-Centenary of Rediscovery of New Zealand**, 1969, in silver and bronze (42mm) (M.1969/2) (2), by The Numismatic Society of Auckland; **James Cook Bi-Centenary**, 1969, in silver (2), bronze and bright copper (33mm) (M.1969/4) (4), by Hawke's Bay & Gisborne Savings Bank. *Extremely fine - uncirculated.* (6)

\$70

1934

**James Cook Bi-Centenary**, 1969, in silver (33mm) (M.1969/4), by Hawke's Bay & Gisborne Savings Bank; **Capt James Cook Third Pacific Voyage**, 1976, in silver and bronze (42mm) (M.1976/1) (2), by Eastern and Central Savings Bank. *In cases of issue, these with few spots of foxing, medals uncirculated.* (3)

\$80

1935

James Cook, H.M.Bark "Endeavour", 1969, in silver, nickel silver and bronze (39mm) (M.1969/6) (3); Centenary of Second Voyage, 1972, in silver and antique bronze (38.5mm) (M.1972/1) (2). *Uncirculated.* (5)

\$100



part

1936\*

Cook Bicentenary, Third Pacific Voyage, 1776 - 1976, in 9ct gold (30.7g; 42mm) with edge number 149, silver and bronze (M.1976/1) (3), for the Eastern and Central Savings Bank, New Zealand. *Unc.* (3)

\$650



part

1937\*

Bicentenary of the Death of Captain Cook, undated (1979), in silver (51mm), by Imago of Surrey, England, edge impressed HJF and hallmarked, obverse, uniformed bust of Cook left, with globe beside him and map of his Pacific exploration route highlighted, reverse, Cook's ship, Endeavour and on shore a group of natives, two in a canoe, a kangaroo and fruits, at side of ship's sails, 'Captain Cook/Trust' (Klenman 111A); another pair of identical medals (34mm), one in silver and one in bronze. *The last two with some toned areas, otherwise uncirculated.* (3)

\$100



part

1938\*

Canada, British Columbia, Captain James Cook, R.N. F.R.S. 1728-1779, (1979), in pure copper, another in oxidised bronze, and another in sterling silver (51mm), obverse, bust of Cook right, reverse, H.M.S. Resolution at anchor with mountains in background, below, 'Capt. Cook First White/Man To Land In/British Columbia/At Nootka/1778'. *Uncirculated.* (3)

\$250

This medal was also issued in gold by Allan Klenman, Victoria, British Columbia, who published his book 'The Faces of Captain Cook' in 1983 with a foreward by William J. Mira.

1939

Canada, British Columbia, Sea Festival dollars in cupro nickel, 1978 (4, three relating to Captain Cook); Cook Bicentennial, Port Alberni, 1978, in cupro nickel (34mm) (2); Captain Cook Bicentennial, 1978, uniface in silver (19mm), with suspension ring; Captain James Cook at Nootka Sound, 1978, in silver and another in gilt (33mm) (2); Captain Cook Bicentennial, 1978, uniface in oxidised bronze (39mm), with suspension ring; Cook Bicentennial/Canadian Armed Forces, 1978, in gilt aluminium (35mm) (2); James Cook - George Vancouver, undated, in white metal (32mm); other trade dollars in cupro nickel (32mm), for Victoria BC City of Gardens (2), Calgary Stampede, Kelowna 75th Annual Regatta. *Very fine - uncirculated.* (17)

\$60



1940\*  
**France**, Captain James Cook, memorial medal, 1823, in bronze (41mm) from the Universal Series by Durand, portrait by F.Smith, edge impressed 'Monachii' (issued in Munich) (BHM.1207). *Some toned areas on reverse, otherwise nearly uncirculated.*

\$300



part

1942\*  
**USA**, Alaska, Cook Inlet Native Association, Alaska Centennial, 1967, in silvered (40mm), obverse, Nick Gray Memorial, above numbered '3'; Captain James Cook, Explorer of Cook Inlet 1778, Anchorage Alaska, 1978, in silver (edge number 194), gilt bronze (edge number 194), bronze (unnumbered) (38mm) (3), obverse, bust of Cook and ship behind, reverse, map of Cook Inlet and surrounds. *The gilt bronze issue lacquered on obverse, otherwise uncirculated.* (4)

\$100



1943  
**USA**, Hawaii, Capt James Cook Pacific Explorer, Hawaii Islands, Hawaii State, 1959, in gilt bronze (38mm) (2), milled edges, obverse, bust of Cook at left facing right, reverse, map of islands, titled 'Hawaii', with legend, 'Hawaii Islands'; Capt James Cook Pacific Explorer, Sandwich Islands 1779, Hawaii State Numismatic Association, 1964, in oxidised silvered (edge number 495), oxidised bronze (edge number 448) and dark bronze (unnumbered) (38mm) (3), obverse, same as first medal above, reverse, as for first medal but islands named 'Kealakekua Hawaii', and different legend, 'Owhyhee Sandwich Islands 1779'. *Hairlines on third medal, otherwise extremely fine - uncirculated.* (5)

\$100



part

1941\*  
**France**, Captain Cook 1728-1779, undated, in silver (72.5mm) (edge impressed 1973), and in bronze (72.5mm) (edge impressed 1981), by Helene Guastalla, struck by Monnaie De Paris, obverse, half facing bust of Cook with heavily textured finish, reverse, scene of Cook's Antarctic expedition. *Uncirculated.* (2)

\$200





1944\*  
 USA, Hawaii, Captain Cook Festival, 1967-1969, set of six medals in silver and bronze (44mm), obverse, facing bust of Captain Cook, 1967, reverse, two ships and in 1778 discovered Hawaii (2, the first edge numbered 33) (Medcalf 2M-72), 1968, reverse, ship sailing around a globe for Third Pacific Voyage Discovery of Hawaii (2, both edge numbered 114, and both with original boxes) (Medcalf 2M-73), 1969, reverse, Fort Venus at Tahiti (2, both edge numbered 128) (Medcalf unlisted). *Uncirculated.* (6)

\$300

1945  
 USA, Hawaii, Captain Cook Festival, 1969, in bronze (44mm), edge number 38, obverse, facing bust of Captain Cook, reverse, Fort Venus at Tahiti; Captain James Cook, Discovery of the Hawaiian Islands, (1978), in oxidised silvered (45mm), obverse bust of Cook, reverse, Resolution; Bicentennial of the Discovery of Hawaii, 1978, in oxidised silvered and oxidised bronze (38mm) (2), for 15th Anniversary of Hawaii State Numismatic Society, obverse, Cook half figure with map and ships in harbour behind, reverse, ship and Sandwich Islands. *Uncirculated.* (4)

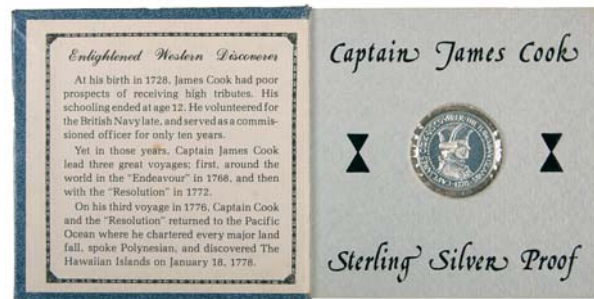
\$100



part

1946\*  
 USA, Hawaii, James Cook Discoverer The Hawaiian Islands on third voyage, (1977), in silver (38mm), obverse, cameo of Cook's head and scene of Cook meeting natives on shore; Postmaster of America Commemorative Issue No.2, 1978, obverse, Captain Cook on ship at anchor at Hawaii looking through telescope, reverse, eagle; Hawaii, (1978), in silver (38mm), obverse, King Kamehameha I with natives in village setting, reverse, list of important events in Hawaii's history; Captain James Cook, Discovery of Hawaii Bicentennial, (1978) (38mm), edge number 0110, obverse, Cook standing with flag and globe in background, reverse, ship and islands of Kauai and Oahu. *First two with scuffing in fields, otherwise extremely fine - uncirculated.* (4)

\$120



1947\*  
 USA, Hawaii, Captain James Cook Discoverer The Hawaiian Islands, (1978), proof in silver (20.5mm), reverse, Resolution ship's wheel 'Kona Coast Bank', in pack of issue by The Hawaiian Mint. *FDC.*

\$100

1948  
 USA, Hawaii, Captain Cook, 1978, proof in silver (20.5mm), obverse, bust of Captain Cook right, legend, 'Captain James Cook Discoverer The Hawaiian Islands 1778', reverse, Resolution ship's wheel and 1978 and below 'Kona Coast Bank'; another identical in silver with reverse design for Atlantis, undated; another identical in bronze with reverse design of a central dollar sign and around, 'The Hawaiian Mint'. *The first with coin folder, the second with glue marks on reverse, otherwise extremely fine - uncirculated.* (3)

\$60



part

1949\*

USA, Hawaii, Capt James Cook RN, Hawaii Bicentennial Anniversary, 1978, in silver, oxidised silver and bronze (38mm), obverse, bust of Cook half facing right, reverse, ships, canoes and natives in harbour scene. *The first with die crack down left side of Cook's face, the second polished, otherwise extremely fine - uncirculated.* (3)

\$100



part

1952\*

USA, Hawaii, Captain James Cook Discovers Hawaii in 1778, (1998), in silver (edge number 836), oxidised silver (edge number 435) and bronze (No.2 on reverse at 6 o'clock), obverse, Captain Cook head right, reverse, Captain Cook Monument at Kealakekua, Kona, Hawaii. *Uncirculated.* (3)

\$130



part

1950\*

USA, Hawaii, Captain James Cook Discoverer of Hawaii, (1978), in oxidised silvered (38mm), another in oxidised silvered (32mm), another in gilt bronze (32mm), and another in gilt bronze (32x36.5mm) includes suspension, obverse, bust of Cook right with his ship and the Hawaii islands, reverse, King Kamehameha with island scene behind. *The first with light toning or rubbing on a few high points, otherwise uncirculated.* (4)

\$100



part

1953\*

USA, Hawaii, Captain Cook, medallic replicas of 1928 Hawaiian half dollar, 1728-1928, in silver (38mm; 30.5mm) (2); Islands of Paradise, 2006, in silver (?) (50mm), obverse, Captain cook bust at left and at right a ship's compass and the Hawaiian Islands and at the bottom a plaque with inscribed number, '013', reverse, triangle with cross in centre, above, 'Captain James Cook/Explorer of Hawaii' at sides of triangle the date, '20/06', below, compass location points and at the bottom, 'January 18th, 1778/Kealakekua Bay, Hawaii'; also a wooden nickel token for 200th Anniversary of Discovery of Hawaii by Captain James Cook and on reverse, 'In Memory of Kalfred Y.M. Lum/Honolulu Coin Club'. *Uncirculated - FDC.* (4)

\$120

1951

USA, Hawaii, Captain James Cook Discoverer of Hawaii, Kamehameha the Great Founder of the Hawaiian Kingdom, (1978), in silver, gilt bronze and bronze (2) (38.5mm) (4), the silver with edge number 0073; Bicentennial of Discovery of Hawaii, 15th Annual Coin Show HSNA Queen Kapiolani Hotel, 1978, wooden nickel; Hawaii Bicentennial, Kona dollar, 1978, in bronze (38mm); Hawaii The Aloha State, 50th State trade dollar, 1960, in gilt bronze (39mm); Kamehameha, The Hawaiian Mint dollar, undated, in bronze (20mm), with envelope of issue; Owhyhee Sandwich Islands 1779, (1979), uniface in white metal (38mm), by Hawaii State Numismatic Association. *The first with edge nick and test mark, the two bronze issues of the first medal type with spotting, otherwise extremely fine - uncirculated.* (10)

\$80

1954

**World Captain Cook medals**, includes Canada, British Columbia, Captain James Cook at Nootka Sound, 1978, in gilt bronze (32mm), in pack; Great Britain, Captain James Cook RN 1728-1779, undated (c1977), in silver (44mm), from World's Greatest Explorers Series by The Birmingham Mint, in leather cover booklet with history of Captain Cook's exploration; The Arms of Captain Cook 1728-1779, undated (c1979), in silver (44mm), by Danbury Mint; Colonising Australia First Convict Fleet, undated (c1988), in silver (44mm), edge number 1809, by John Pinches; H.M.S. Resolution Battling Through Enduring All, undated (c1988), in silver (44mm), by John Pinches. *Uncirculated.* (5)

\$120



1955

**World Captain Cook medals**, Canada, British Columbia, Captain Cook Bicentennial medal, 1978, uniface in bronze (38mm), with suspension and neck ribbon, unnamed; Captain Cook Bicentennial, 1978, uniface decagon in silvered and acrylic (?) (68mm), with display stand; Sea Festival Commemorative Dollars, set of five, 1978, in cupro nickel (37.5mm), in folder with booklet map; USA, Hawaii, Captain James Cook Explorer of Hawaii, Islands of Paradise, 2006, in silver (?) (50mm), obverse, a plaque with inscribed number, '078'; Captain James Cook Discoverer The Hawaiian Islands, (1978), proof set of three in silver (20.5mm), one with reverse design for Resolution ship's wheel 'Kona Coast Bank', one with reverse design for Atlantis, and another with plain reverse, in pack of issue by The Hawaiian Mint. *The last set with some toning and one coin with a few spots but scarce, otherwise uncirculated - FDC.* (3 + 2 sets)

\$150



part

1956

**World medals**, Great Britain, lead pull (irregular, approx 22mm) of a miniature (15mm) version of the obverse of the Resolution and Adventure Medal, 1779 (BHM 258; Eimer 780); Captain James Cook, Middlesborough, 1979, in bronze (19mm), reverse Christmas bells in holly spray; Portugal, Great Explorers Series, by Gravarte of Lisbon, includes James Cook, Endeavour, 1768, in silver and in bronze (40mm), edge impressed '101/250' and '146/1000'; USA, H.M.Bark Endeavour Lt James Cook, Endeavour North American Tour, undated, in gilt bronze (38mm); other explorer related medals (3), uniface in gilt bronze (37mm) with concentric circles on reverse, obverse designs include Captain James Cook 1768-1771, Stanley & Livingston 1871, Hillary & Tenzing 1953. *The second medal toned, otherwise uncirculated.* (8)

\$100

1957\*

**Portugal**, Great Explorers Series by Gravarte of Lisbon, James Cook, Endeavour, 1768, in silver (70mm), edge impressed '22/50', and another identical in bronze, edge impressed '68/1000'. *The first in pack of issue with certificate, uncirculated.* (2)

\$150

## CAPTAIN COOK COINS

### GOLD

1958

**Cook Islands**, proof one hundred dollars, 1975 Bicentennial of Return of Captain James Cook from Second Pacific Voyage (KM.13). *In case of issue with certificate, FDC.*

\$420

1959

**Cook Islands**, proof one hundred dollars, 1976 US Bicentennial with conjoined heads of Benjamin Franklin and James Cook (KM.16). *In folder of issue, FDC.*

\$420

1960  
**Cook Islands**, proof two hundred dollars, 1978 Bicentennial of Discovery of Hawaii by Captain James Cook (KM.22). *In case of issue with certificate, FDC.*

\$750

1961  
**Cook Islands**, proof two hundred and fifty dollars, 1978 250th Anniversary of Birth of James Cook (KM.23). *In folder of issue, FDC.*

\$800

1962  
**Cook Islands**, proof two hundred dollars, 1979 The Legacy of Captain James Cook (KM.26). *In pack of issue, this with foxing, coin FDC.*

\$750

1963  
**Western Samoa**, proof one hundred tala, 1979 Bicentenary of Death of Captain James Cook (KM.34). *In case of issue with certificate, FDC.*

\$550

## SILVER & BRONZE

1964  
**Cook Islands**, proof sets, 1972, 1973 and 1974 (sets contain commemoratives for Cook's 2nd Pacific Voyage), 1978 (KM. PS1, 4, 7, 9); proof ten dollars, 1994 Capt. James Cook (KM.358). *In cases or packs of issue, a few of these with foxing, otherwise FDC.* (5)

\$100

1965  
**Western Samoa Captain Cook coins**, tala, 1970, 1979 (KM.9, 32), both with issue case; ten tala, 1979, and fine gold ten tala, 1995 (KM.33, 144) (2), the first with issue pack and second in capsule. *Uncirculated.* (4)

\$70

1966  
**World Captain Cook coins**, Australia, proof silver five dollars, 1993 (ex masterpieces in silver Explorers issue), proof silver fifty cents, 1989 (ex masterpieces in silver Fifty Cents collection), mint fifty cents, 1970; Cook Islands, one cent in aluminum, 2003 (2), two and a half dollars, 1973, proof ten dollars, 1994, proof fifty dollars, 1988 (KM., 419 [2], 9, 358, 62) (5); New Zealand, fifty cents, 1969 Endeavour, one dollar, 1969 Cook's Chart, 1970 Mt Cook (2), 1970 Cook Islands, five dollars, 1992 The Discoverers Cook. *Uncirculated - FDC.* (14)

\$100

1967  
**World Captain Cook coins**, includes Australia, mint fifty cents, 1970 Cook's Bicentenary; New Zealand, proof set, 1994 Endeavour, mint set, 1994 Endeavour, mint set, 1969 Cook's Chart, mint one dollar, 1969 Cook's Chart; Western Samoa, proof tala, 1970 James Cook, proof ten tala, 1979 Bicentenary Captain James Cook, mint talas, 1970 James Cook, 1979 Bicentenary Captain James Cook (KM.9, 33a, 9, 32) (4); Zambia, proof one thousand kwacha, 2000 Captain Cook in Australasia (KM.99). *In cases and packs of issue, the Western Samoa proof cases with foxing, otherwise uncirculated - FDC.* (12)

\$100

1968  
**World Captain Cook coins**, Gibraltar, proof crown, 1997 (KM.623); Great Britain, proof silver and enamel trade dollar, 1998 (KM.-); Isle of Man, crown, 1989 (Mutiny on Bounty issue) (KM.240) (2); Liberia, dollar, 1999 (KM.404); Niue, proof five dollars, 1996, proof ten dollars, 1992 (KM.114, 69) (2); Saint Helena, proof fifty pence, undated (2002) (KM.27a); South Georgia and South Sandwich Islands, proof two pounds, 2000, 2003 (KM.4a, 18) (2); USSR, proof three roubles, 1990 (KM.Y.242). *Uncirculated - FDC.* (11)

\$150

## OTHER CAPTAIN COOK MEMORABILIA



1969\*  
**Bronze bust of Captain Cook**, on timber shield (32x37cm; bust 18x25cm); tot wt 7.22kg), with wall hanging bracket attached. *Some small nicks on face and forehead, otherwise very fine.*

\$100

1970  
**Bronze cast of Captain Cook's ship Endeavour**, on timber backing with framed surround (34.5x36cm; casting 27.5x28cm; tot wt 4.74kg), with wall hanging suspension rings attached. *Some oxidation, otherwise very fine.*

\$90

1971

**Captain James Cook's Sword**, a replica of the sword used by Captain Cook being a Small Naval Hanger Sword (1757-1769), issued to commemorate the Bicentenary of Captain James Cook landing in Australia, April 29th 1770, wire bound composite grip and plated crossguard, single edge plated blade marked 'Wilkinson Sword, London', overall 68cm long, display mounted on replica ship board with rope border and with a small brass anchor attached at bottom right of sword handle, the board with wall mounting brackets on back; also a Certificate of authenticity and a history sheet, both framed together under perspex in a heavy timber frame (70x41cm). *Some foxing on documents, crossguard of sword loose, otherwise good very fine.* (2)

\$150

Note: Licence to own required in State of Victoria, Australia.  
No mail out for this lot, collection only from the Sydney Office.

1972

**Captain Cook Discovery of Australia Bicentenary**, 1970, Royal Doulton loving cup in basalt (approx 21cm high x 28cm from handle to handle), one side features a bust of Captain Cook and the other side has Captain Cook with crew in long boat arriving at shore to meet aborigines, gold lettering around the top lip reads, 'Captain Cook 1770 . Australia . 1970', bottom of cup bears the Royal Doulton mark and No.149 of only 500 issued. *In Royal Doulton case of issue, some tape residue on inside, otherwise uncirculated.*

\$180



1973\*

**Visit of Endeavour to Mackay**, June 1995, limited edition porcelain tankard (12cm high), on bottom marked 8 of 45. *Uncirculated.*

\$100

This tankard was issued to commemorate the replica 'Endeavour' and its re-enactment of Captain Cook's voyage along the east coast of Australia.

1974

**Captain Cook decanter**, 1970, Bi-Centenary Collectors Edition of Endeavour Rum, a hand painted and lacquered figure of Captain Cook standing (approx 28cm high) with ship's wheel behind, a journal at his feet and an open map on a pedestal in front of his left side. *Empty of rum, otherwise good very fine.*

\$50

1975

**Captain Cook**, small porcelain whiskey decanter, bust of Cook on an oval base, specially commissioned from Royal Doulton by Jim Beam Bourbon Whiskey (12cm high), no cork; also a painted, plaster wall hanging of Captain Cook (?) wearing an eye patch over right eye. (14cm high). *Good very fine - extremely fine.* (2)

\$50

1976

**Captain James Cook**, 1770 Bicentenary 1970, bronze wall plaque (19cm), featuring bust of Cook; another in brass (15cm), featuring Cook's ship the Endeavour; Municipality of Rockdale arms featuring Captain Cook and his ship Endeavour and an aborigine, enamel arms raised on a timber shield (15x17cm), with wall hanging fitting; as previous but an enamel and gilt badge (88mm), with suspension loop; wall hanging coloured and lacquered plaster plaque (9.7cm), features bust of Cook with map of Australia behind; small triangular glass ashtray (9.4cm), inside marked in blue, 'The Captain Cook Museum', around an image of Endeavour; metal and leather drink coaster inscribed in the centre with a ship and the name, 'the hotel Captain Cook'; small copper tray (9.5cm), in the centre marked in blue and black, 'Captain Cook Bi-Centennial British Columbia Canada' around an image of Endeavour in the ocean; tea or coffee pot stand in enamelled plaster (15.2cm), same design as previous small tray. *The first with some oxidation, mostly on reverse, very fine - uncirculated.* (9)

\$100

1977

**Captain Cook**, matching plates, one large serving plate (27cm), and smaller size (17cm), the first features a half figure image of Cook seated and holding a map, the second depicts the Endeavour under sail; another glass plate (25cm), with scalloped edge and painted blue and gold in the centre for 'Captain Cook Bicentennial British Columbia Canada', around the Endeavour under sail, around the edge are a variety of depictions relating to Captain Cook; another commemorates Captain Cook, Hawaii 1778, issued in 1978, in porcelain by Royal Copenhagen (18cm), in box of issue; also a Captain Cook set of placemats in cellulose and cork by Pimpernel, features six mats each with a different scene relating to Captain Cook, in original box. *The first with a few very small scratches, otherwise uncirculated.* (5)

\$70

1978

**Captain Cook statues**, one a bust of Cook wearing a naval officer's hat (13.5cm high), and the other a bust of Cook without a hat (15cm high), both moulded in plaster and with base for standing; wall hanging prints under perspex in gold painted timber frames (15.2x20.2cm) (4, different). *Extremely fine.* (6)

\$50

1979

**200th Anniversary of the Landing of Captain Cook 1778-1978**, Aloha crockery whiskey decanter (22cm high and 19mm wide but very flat) for James Beam Distilling, one side features a cameo image of bust of Captain Cook, the other side in bright colours features Aloha across a rainbow going behind mountains and in front modern buildings and palm trees at the seaside and with pink local flowers around the outside edge; also glass tankard (11.6cm high) featuring gold images of a bust of Captain Cook on one side and Cook landing at Botany bay on the other side; large glass tumbler (10cm high x 9cm wide), features transfer of head of Cook on one side and the Endeavour on the other side; large black pottery jug (10cm high x 16.8cm wide including handle), features a gold image of H.M.S. Endeavour on one side and on the other side a 16-line outline of Cook's expedition to Australia. *Good very fine - extremely fine.* (4)

\$60

1980

**Captain Cook's Cottage**, Melbourne, small, coloured, wall-hanging plate (10cm); small, plate (10cm) featuring Cook's Endeavour; Australia First Fleet plate (15.2cm) with 24K gold trim; large porcelain coffee mug by Denby, England, features various scenes of Yorkshire, Cleveland & Humbershire, including a bust of Captain Cook; small porcelain coffee mug featuring Captain James Cook's bust on one side and H.M.S. Resolution on the other side, base marked 'Decorated in Canada 22k gold'; small blue and white porcelain coffee mug, marked on one side 'Launch of the Endeavour 9 December 1998 Fremantle' and on the other side an image of the Endeavour; tall porcelain coffee mug featuring the name 'Captain Cook' under a small cameo image of the Endeavour and on the other side the name 'Endeavour' under a large cameo image of the Endeavour. *Extremely fine - uncirculated.* (7)

\$70

1981

**Captain Cook tiles**, one featuring H.M.S. Resolution (10.8cm square), two others (both 15cm square), one features Cook and his ship and a modern government boat named Captain Cook, reverse of tile states, 'To commemorate the landing of Captain Cook at Nootka in 1778', the other features bust of Cook and around, 'Captain Cook Bicentennial British Columbia' small base metal bell with image of Endeavour on top; aluminium mugs (3), two large with one coloured red and the other green, and one smaller uncoloured, all with image of Endeavour and all with timber base; circular timber pencil holder and around the middle a leather wrap marked 'Mount Cook Line New Zealand' on opposing sides; leather key holder, marked in gold lettering on one side, 'Greetings from The Hermitage Mt Cook NZ'; irregular cut-out shaped piece of timber (27.5x18cm) and across the middle an image of Endeavour with ship's statistics; Nerada Botany Bay Brew tea tin featuring Captain Cook landing at Botany Bay; large pencil (28cm long) marked, 'Cooks' Cottage Melbourne - Australia', with suspension cord; rare Peters Dairy Milk bottle tops featuring the Endeavour and 1770/1970 (4). *Very fine - uncirculated.* (16)

\$70

1982

**Captain James Cook**, extracts from his journal kept during the voyage of H.M.S. Endeavour 1768-1771, together with an original lithograph of Cook at his desk with a map spread out in front, presented by the Committee of the National Library, black on buff coloured paper with evidence of original documents ageing, in timber frame (75x50cm), under perspex. *Some toning, otherwise very fine.*

\$120

1983

**Captain James Cook at Botany Bay**, a large coloured print of Captain James Cook, Dr. Carl Solander and a Tahitian interpreter at Botany Bay in 1770, in an impressive timber frame (90x73.5cm), under perspex. *Extremely fine.*

\$200

1984

**His Majesty's Bark Endeavour**, from a watercolour by C.E. Ellwood, a colour print Volume 1 - 1 to 1,000, in black metal frame (51x41cm), under perspex; another, Captain Cook's Ships, H.M.S. Resolution and Adventure in the Long Reach, from an oil painting by F. Holman, 1772, a colour print in black metal frame (51x41cm), under perspex. *The second with foxing throughout, the first extremely fine.* (2)

\$100

1985

**Captain James Cook at Nootka Sound**, British Columbia, Canada with Cook in a native village talking to Indians with his ships moored in the Sound behind, a 2-page colour spread mounted in a frame (63x48cm), under perspex. *Crack in perspex at top right corner, otherwise very fine.*

\$50

1986

**Captain Cook's Family Tree**, in black print on white, matt framed under perspex (46.5x36.5cm); Captain Cook Memorial at Kurnell, Sydney, a colour print in frame (42x37cm), under perspex; also Bark Endeavour from an oil painting by F.J. Booth, a colour print in a timber frame (46x37.5cm), under perspex. *A few spots of foxing on the white border of the second and third prints, otherwise good very fine.* (3)

\$150

## CAPTAIN COOK LITERATURE

1987

**Captain Cook & the Voyage of Endeavour 1768-1771**, by Captain Frank Knight, 1968, board cover, 174pp; Endeavour 200, produced exclusively for Australian Hoechst Limited, 1970, hard cover, 64pp; Captain James Cook, by Australian Publishing Co, c1970, soft cover, approx 165; Ships and Seafarers in Australian Waters, by Max Colwell, 1973, hard cover with dust jacket, approx 130pp; The Three Voyages of Captain Cook, by Frank Paluka, 1974, hard cover, 80pp; From Maui to Cook, The Discovery and Settlement of the Pacific, by David Lewis, 1977, hard cover with dust jacket, 212pp; European Voyaging Towards Australia, edited by John Hardy and Alan Frost with assistance of Isabel Moutinho, occasional paper No.9, 1990, soft cover, 171pp; The Illustrated Longitude, by Dava Sobel and William J.H.Andrewes, 1998, soft cover, 216pp; The Replica of H M Bark Endeavour, The story so far: 1987-1994, edited by Mike Lefroy, c1994, soft cover, 52pp; also various leaflets mostly for Captain Cook and includes replica documents and postal cover (9 items). *Good - very fine.* (18)

\$120

1988

**The Voyages of Captain Cook**, selected and edited by Christopher Lloyd, 1949, hard cover with dust jacket, 383pp, with happy birthday inscription on fly page; Captain Cook, by Alistair Maclean, 1972, hard cover with dust jacket, 192pp; James Cook, Maritime Scientist, by Tom and Cordelia Stamp, 1976, hard cover with dust jacket, 159pp; The Murder of Captain James Cook, by Richard Hough, 1979, hard cover with dust jacket, 271pp; Captain Cook's Final Voyage: The Journal of Midshipman George Gilbert, introduced and edited by Christine Holmes, 1982, hard cover with dust jacket, 158pp; Voyages of Discovery, Captain Cook and the Exploration of the Pacific, by Lynne Withey, 1987, hard cover with dust jacket, 512pp. *Some with foxing, mostly fine - very fine.* (6)

\$70

1989

**First Voyage**, by John Gwyther F.R.G.S., 1954, hard cover, 208pp; Captain Cook, the Seamen's Seaman, by Alan Villiers, 1967 reprinted 1970, soft cover, 326pp; James Cook, by Thea Stanley Hughes, 1981, soft cover, 79pp; The Captain Cook Myth, by Jillian Robertson, 1981, soft cover, 164pp; Captain James Cook, by John Hooker, 1987, soft cover, 257pp; Elizabeth Cook, The Captain's Wife 1741-1835, by Shirley Sinclair, 1995, soft cover, 24pp, signed by author; Captain Cook, Obsession and Betrayal in the New World, by Vanessa Collingridge, c2001, an advance uncorrected proof for editing, soft cover, 376pp; Into the Blue, Boldly Going Where Captain Cook Has Gone Before, by Tony Horwitz, 2002, soft cover, 480pp. *Fine - very fine.* (7)

\$50

1990

**The Explorations of Captain James Cook in the Pacific as told by Selections of his Own Journals 1768-1779**, edited by A. Grenfell Price, 1958, hard cover with dust jacket (cover loose and repaired, fly page with tear), 292pp; Captain Cook and the South Pacific, by Oliver Warner in consultation with Dr. J.C. Beaglehole, 1964, hard cover, 153pp; The Voyages of Captain Cook, by Rex and Thea Rienits, 1968 reprinted 1969, 1970, 1976, hard cover with dust jacket, 157pp; James Cook and New Zealand, by A. Charles Begg and Neil C. Begg, 1969, hard cover, 156pp + plates and text index; Captain James Cook, His Early Life and Voyage of the Endeavour, by William Beard, 1970, hard cover with dust jacket, 32pp; Captain Cook his Artists his Voyages, the Daily Telegraph portfolio of original works, 1970, hard cover with dust jacket, 64pp; Captain Cook Navigator & Scientist, papers presented at the Cook Bicentenary Symposium Australian Academy of Science, Canberra 1 May 1969, edited by G.M. Badger, 1970, hard cover with dust jacket, 143pp; Captain Cook, R.N., The Resolute Mariner, an International Record of Oceanic Discovery, by Thomas Vaughan, 1974, soft cover, 97pp; Captain Cook's Hawaii as seen by his artists, by Anthony Murray-Oliver, 1975, hard cover, 215pp; The British Museum Yearbook 3, Captain Cook and the South Pacific, 1979, by various authors, hard cover with dust jacket, 249pp; James Cook Royal Navy, by George Finkel, 1987, hard cover with dust jacket, 224pp. *Several with foxing, otherwise good - very fine.* (11)

\$130

1991

**Bligh of the Bounty**, being the Narrative of the Mutiny of the Bounty and the Voyage in the Open Boat, edited by E.A. Hughes M.A., hard cover, 191pp, inside front cover is bookplate of T.Hanley and with 'Awarded to' sticker from Supt Heathcote PSSM Sunday School 1945; The Pacific Ocean, by Felix Riesenberg, 1947, hard cover, 284pp, includes a chapter on Captain Cook; Darwin and the Beagle, by Alan Moorehead, 1969 reprinted 1971, 1973, 1978, soft cover, 222pp; A Voyage to New Holland, The English Voyage of Discovery to the South Seas in 1699, by William Dampier, edited with an introduction by James Spencer, 1981, hard cover with dust jacket, 256pp; First Impressions, The British Discovery of Australia, by Margaret Steven, 1988, hard cover with dust jacket, 96pp; The National Maritime Museum, The Collections, by Scala Publications, 1990, soft cover, 128pp, includes a feature on James Cook; The Bounty, The True story of the Mutiny on the Bounty, by Caroline Alexander, 2003, soft cover, 491pp; various other books mostly relating to Captain James Cook including several children's books on this subject, all with hard covers (11 includes one duplicate issue). *Good - very fine.* (18)

\$120