

PAPUA NEW GUINEA



552\* German New Guinea, five mark, 1894A. Reverse with scratch in field, otherwise nearly extremely fine.

\$2,000



553\* German New Guinea, two mark, 1894A. Surface marking, otherwise nearly uncirculated.

\$750

Ex Status Sale June 2016 and Brian Bolton Collection.



554\* German New Guinea, two mark, 1894A. Extremely fine.

\$700



555\* German New Guinea, two mark, 1894A. Nearly very fine.

\$500



556\* German New Guinea, one mark, 1894A. Lightly toned, with edge nick, otherwise nearly uncirculated.

\$500



557\* German New Guinea, one mark, 1894A. Dark toned, very fine.

\$100



558\* German New Guinea, half mark, 1894A. Lightly toned, mirror-like obverse fields, choice uncirculated.

\$500

Ex Noble Numismatics Sale 92 (lot 1224) and Brian Bolton Collection.



559\* German New Guinea, half mark, 1894A. Toned, good extremely fine.

\$400



560\* German New Guinea, half mark, 1894A. Toned, extremely fine.

\$250

Ex Noble Numismatics Sale 96 (lot 1250).



561\* German New Guinea, half mark, 1894A. Good very fine.

\$200



562\*  
**German New Guinea, ten pfennig, 1894A. Brown and red toned, good extremely fine.**

\$300

Ex Noble Numismatics Sale 95 (lot 851) and Brian Bolton Collection.



563\*  
**German New Guinea, ten pfennig, 1894A. Toned, good extremely fine.**

\$300



564\*  
**German New Guinea, ten pfennig, 1894A. Brown and red, good extremely fine.**

\$250

Ex Dr Gordon V.Shortland Collection, Noble Numismatics Sale 96 (lot 1253).



565\*  
**German New Guinea, two pfennig, 1894A. With almost full mint bloom, uncirculated.**

\$250



566\*  
**German New Guinea, one pfennig, 1894A. Mostly red uncirculated.**

\$350

Ex Status Sale June 2010 (lot 7752) and Brian Bolton Collection.



567\*  
**German New Guinea, one pfennig, 1894A. Toned, good extremely fine.**

\$200



568\*  
**German New Guinea, one pfennig, 1894A. Good extremely fine.**

\$150



569\*  
**Territory of New Guinea, George V, Melbourne Mint specimen penny and halfpenny, 1929 in cupro-nickel, (KM.1, 2). Slightly toned, FDC. (2)**

\$1,500

570  
**Territory of New Guinea, penny, 1936 (KM.6), 1944 (KM.7); threepence, 1935 (KM.3), 1944 (KM.10); sixpence, 1935 (KM.4), 1943 (KM.9); shilling 1936 (KM.5), 1945 (KM.8). Extremely fine - uncirculated. (8)**

\$80

571  
**Papua New Guinea, proof gold one hundred kina, 1975 FM(P) (KM.9); proof set, 1975 (KM.PS1); Australia, proof selectively gold plated silver five dollars, Rugby World Cup, 2003 (2); fifty cents set, 1966, 1970, 1977, 1980, 1981, 1982 in plastic holder. Very fine - FDC. (5)**

\$400

572  
**Papua New Guinea, proof gold one hundred kina, 1976 (KM.10), First Anniversary of Independence. In pack of issue, FDC.**

\$350





573\*  
**60th Anniversary of the Administration of Papua**, by the Commonwealth of Australia, 1962, in oxidised silver (38mm), by K.G.Luke, edge numbered 27, issued by Numismatic Association of Victoria. *Uncirculated.*

\$100

Only 50 medals issued in silver, numbered 1-50.  
 Ex Wal Shannon Collection.

## NEW ZEALAND



574\*  
**George V, Royal Mint, Waitangi proof set, 1935**, crown, halfcrown, florin, shilling, sixpence and threepence. *Toned with underlying brilliance, FDC and rare.* (6)

\$10,000

575

**George V, plush maroon leather case for the 1935 Waitangi proof set**, provision for six coins, crown to threepence. *Excellent condition, with anti-toning fabric included, a rarely offered empty case.*

\$1,500

576

**George V, plush maroon leather case for the 1935 Waitangi proof set**, with provision for the six coins similar to the last. *Nearly extremely fine and rare.*

\$1,500

Ex Allan Sutherland Collection, Noble Numismatics Sale 71 (lot 959).



577\*

**George V, Royal Mint proof Waitangi crown, 1935.** *Light grey toned with golden brown highlights, nearly FDC and rare.*

\$7,000



578\*

**George V, halfcrown, 1933.** *Lightly toned, uncirculated.*

\$350

Ex S.N.Agnew Collection.



579\*

**George V, halfcrown, 1934.** *Choice mint state, brilliant uncirculated and one of the finest known.*

\$600

Ex S.N.Agnew Collection.



580\*  
**George V, halfcrown, 1935. Unmarked fields, gem brilliant mint state uncirculated, one of the finest known and extremely rare as such.**

\$1,000

Ex S.N.Agnew Collection.



581\*  
**George V, florin, 1933. Uncirculated.**

\$300

Ex S.N.Agnew Collection.



582\*  
**George V, florin, 1934. Bright uncirculated.**

\$280

Ex S.N.Agnew Collection.



583\*  
**George V, florin, 1935. Steely grey tone with much underlying brilliance, as struck, uncirculated and rare thus.**

\$600

Ex S.N.Agnew Collection.



584\*  
**George V, florin, 1936. Toned, minor surface marks on reverse in exergue and lettering, otherwise virtually uncirculated and very rare thus, the key coin of the series.**

\$2,500

Ex S.N.Agnew Collection.



585\*  
**George V, shilling, 1933. Full original mint bloom, uncirculated.**

\$250

Ex Noble Numismatics Sale 70 (lot 709) The Allan Sutherland Collection, then Sale 81 (lot 2180) and S.N.Agnew Collection.



586\*  
**George V, shilling, 1934. Light obverse die break, choice uncirculated.**

\$250

Ex S.N.Agnew Collection.



587\*  
**George V, shilling, 1935. Weak obverse strike, light mark in reverse field, otherwise uncirculated and rare in this condition.**

\$300

Ex S.N.Agnew Collection.



588\*  
**George V, sixpence, 1933. Full mint bloom, choice uncirculated.**

\$180

Ex Noble Numismatics Sale 81 (lot 2182) and S.N.Agnew Collection.





589\*  
George V, sixpences, 1933, 1934, 1935, and 1936 (2). *Nearly uncirculated.* (5)

\$350



590\*  
George V, sixpence, 1934. *Small mark near King's eye, otherwise uncirculated.*

\$100



591\*  
George V, sixpence, 1935. *Full original mint bloom, uncirculated and rare thus.*

\$300

Ex S.N.Agnew Collection.



592\*  
George V, sixpence, 1936. *Brilliant, uncirculated and rare thus.*

\$220

Ex S.N.Agnew Collection.

593  
George V, threepences, 1933 (2), 1934 and 1936. *Uncirculated - choice uncirculated.* (4)

\$170

Ex S.N.Agnew Collection.



594\*  
George V, threepence, 1935. *Light even tone, choice uncirculated and rare as such, the key date.*

\$2,200

Ex S.N.Agnew Collection.



595\*  
George V, threepence, 1935. *Delightful light tone, uncirculated and rare, one of the finest known.*

\$1,500

Ex Brian Bolton Collection.

596  
George VI, crown, 1949, proposed Royal Visit. *Toned, choice uncirculated and scarce as such.*

\$100

In a slab by PCGS as MS66.



597\*  
George VI, halfcrown, 1937. *Full original frosty mint bloom, uncirculated/choice uncirculated.*

\$250

Ex S.N.Agnew Collection.



598\*  
George VI, halfcrowns, 1940 Centennial and 1941. *Nearly uncirculated; choice uncirculated.* (2)

\$250

Ex S.N.Agnew Collection.

599

George VI, halfcrown, 1940 Centennial. *Nearly uncirculated - uncirculated.* (3)

\$120



600\*

George VI, halfcrown, 1942. *Light peripheral toning with underlying frosty brilliance, uncirculated.*

\$250

Ex S.N.Agnew Collection.



601\*

George VI, halfcrown, 1943. *Full frosty original mint bloom, choice uncirculated.*

\$180

Ex S.N.Agnew Collection.



602\*

George VI, halfcrown, 1944. *Nearly uncirculated and one of the finest known of this key date.*

\$1,500

Ex Brian Bolton Collection.



603\*

George VI, halfcrown, 1944. *Mark on King's head probably caused during minting, minor obverse carbon spots in the devices, otherwise frosty mint bloom, nearly uncirculated and rare in this condition, the key date.*

\$400

Ex S.N.Agnew Collection.



604\*

George VI, halfcrown, 1945. *Dull toned, virtually uncirculated.*

\$150

Ex S.N.Agnew Collection.



605\*

George VI, halfcrown, 1946. *Dull tone, uncirculated.*

\$150

Ex S.N.Agnew Collection.



606\*

George VI, halfcrown, 1947. *Nearly uncirculated.*

\$120

Ex S.N.Agnew Collection.



607\*

George VI, halfcrown, 1948. *Uncirculated and rare thus.*

\$300

Ex S.N.Agnew Collection.





608\*  
George VI, halfcrown, 1948. *Uncirculated.*

\$300

Ex S.N.Agnew Collection.



611\*  
George VI, florin, 1937. *Evenly toned with underlying frosty mint bloom, uncirculated.*

\$220

Ex S.N.Agnew Collection.



609\*  
George VI, halfcrown, 1949. *Uncirculated.*

\$300

Ex S.N.Agnew Collection.



612\*  
George VI, florin, 1940. *Full frosty mint bloom, virtually uncirculated and very rare as such.*

\$800

Ex S.N.Agnew Collection.



610\*  
George VI, halfcrowns, 1950 (2, both die types) and 1951. *Nearly uncirculated - uncirculated.* (3)

\$200

Ex S.N.Agnew Collection.



613\*  
George VI, florin, 1940. *Most attractively toned with full underlying mint bloom, uncirculated.*

\$750

Ex Brian Bolton Collection.



614\*  
George VI, florin, 1941. *Full original frosty mint bloom, minor reverse surface mark, otherwise uncirculated.*

\$180

Ex S.N.Agnew Collection.



615\*  
George VI, florin, 1942. *Light toning with underlying brilliance, uncirculated.*  
\$250

Ex S.N.Agnew Collection.



619\*  
George VI, florin, 1946, type I 'round back'. *Very lightly toned, underlying frosty mint brilliance, uncirculated/choice uncirculated.*  
\$180

Ex S.N.Agnew Collection.



616\*  
George VI, florin, 1943. *Frosty mint bloom, uncirculated.*  
\$150

Ex S.N.Agnew Collection.



620\*  
George VI, florin, 1946, type II 'flat back'. *Uncirculated with unmarked fields, very rare in this condition.*  
\$850

Ex S.N.Agnew Collection.



617\*  
George VI, florin, 1944. *Minor surface marks, lightly toned with much underlying brilliance, nearly uncirculated/virtually uncirculated and rare, a key date.*  
\$300

Ex S.N.Agnew Collection.



621\*  
George VI, florin, 1947. *Full original mint bloom, brilliant uncirculated.*  
\$400

Ex S.N.Agnew Collection.



618\*  
George VI, florin, 1945. *Full frosty mint bloom, uncirculated.*  
\$250

Ex S.N.Agnew Collection.



622\*  
George VI, florin, 1948. *Uncirculated.*  
\$300

Ex S.N.Agnew Collection.





623\*  
George VI, florin, 1949. *Uncirculated.*

\$300

Ex S.N.Agnew Collection.



627\*  
George VI, shilling, 1941. *Choice uncirculated with full mint bloom, a key date and very rare in this condition.*

\$500

Ex S.N.Agnew Collection.



624\*  
George VI, florins, 1950 and 1951. *Lightly toned, uncirculated. (2)*

\$150

Ex S.N.Agnew Collection.



628\*  
George VI, shilling, 1942. *Extremely fine and scarce in this condition.*

\$100



629\*  
George VI, shilling, 1942. *Lightly toned with underlying frosty brilliance, uncirculated and rare in this condition, one of the key dates.*

\$500

Ex S.N.Agnew Collection.



625\*  
George VI, shilling, 1937. *Very light tone, uncirculated.*

\$150

Ex S.N.Agnew Collection.



630\*  
George VI, shilling, 1942 'broken back' variety. *Full original frosty mint bloom, choice uncirculated and very rare as such.*

\$850

Ex S.N.Agnew Collection.



626\*  
George VI, shilling, 1940. *Fully frosty mint bloom, choice uncirculated and very rare as such.*

\$300

Ex S.N.Agnew Collection.



631\*  
George VI, shilling, 1943. *Minor surface marks, frosty mint bloom, virtually uncirculated.*

\$80

Ex S.N.Agnew Collection.



632\*  
George VI, shilling, 1944. *Brilliant uncirculated.*

\$150

Ex S.N.Agnew Collection.



637\*  
George VI, shilling, 1948. *Uncirculated and rare thus.*

\$200

Ex S.N.Agnew Collection.



633\*  
George VI, shilling, 1945. *Soft tone, underlying mint brilliance, uncirculated.*

\$120

Ex S.N.Agnew Collection.



638\*  
George VI, shilling, 1950. *Light toning, uncirculated and rare in this condition.*

\$200

Ex S.N.Agnew Collection.



634\*  
George VI, shilling, 1946. *Subdued tone with underlying frosty mint bloom, uncirculated.*

\$120

Ex S.N.Agnew Collection.



639\*  
George VI, shillings, 1951 and 1952. *Nearly uncirculated.*  
(2)

\$120

Ex S.N.Agnew Collection.



635\*  
George VI, shilling, 1947. *Full original mint bloom, brilliant uncirculated.*

\$300

Ex Noble Numismatics Sale 70 (lot 712) The Allan Sutherland Collection, then Sale 81 (lot 2199) and S.N.Agnew Collection.



640\*  
George VI, sixpence, 1937. *Light toning, otherwise frosty uncirculated and scarce thus.*

\$100

Ex S.N.Agnew Collection.



636\*  
George VI, shilling, 1947. *Uncirculated and rare in this condition.*

\$200

Ex S.N.Agnew Collection.





641\*  
George VI, sixpence, 1937. *Lightest of toning, otherwise full frosty mint bloom uncirculated.*

\$100

Ex S.N.Agnew Collection.



642\*  
George VI, sixpence, 1939. *Full frosty mint bloom, uncirculated.*

\$120

Ex S.N.Agnew Collection.



643\*  
George VI, sixpence, 1940. *Die break through King's head, lightly toned, otherwise frosty mint bloom, virtually uncirculated and scarce thus.*

\$150

Ex S.N.Agnew Collection.



644\*  
George VI, sixpence, 1941. *Dull tone with underlying mint bloom, extremely fine or better and rare thus, one of the key dates.*

\$100

Ex S.N.Agnew Collection.



645\*  
George VI, sixpence, 1942. *Light toning with underlying frosty mint bloom, uncirculated and rare in this condition, a key date.*

\$350

Ex S.N.Agnew Collection.



646\*  
George VI, sixpence, 1943. *Full frosty mint bloom, uncirculated.*

\$180

Ex S.N.Agnew Collection.



647\*  
George VI, sixpences, 1944, 1945 and 1946. *Uncirculated. (3)*

\$180

Ex S.N.Agnew Collection.



648\*  
George VI, sixpence, 1947. *Uncirculated and rare thus.*

\$150

Ex S.N.Agnew Collection.



649\*  
George VI, sixpence, 1948. *Uncirculated and rare thus.*

\$200

Ex S.N.Agnew Collection.



650\*  
George VI, sixpence, 1950. *Good extremely fine and rare in this condition.*

\$200

Ex S.N.Agnew Collection.

651  
**George VI**, sixpences, 1951 and 1952. *Uncirculated; nearly uncirculated.* (2)

\$50

Ex S.N.Agnew Collection.

652  
**George VI**, threepences, 1937, 1939, 1940, 1942, 1943, 1944, 1945 and 1946. *Nearly uncirculated - brilliant uncirculated, a select group of silver issues.* (8)

\$280

Ex S.N.Agnew Collection.



653\*  
**George VI**, threepence, 1941. *Frosty mint bloom, uncirculated and very rare in this condition.*

\$500

Ex S.N.Agnew Collection.



654\*  
**George VI**, threepence, 1942 'one dot' variety. *Frosty mint bloom, uncirculated and very rare in this condition.*

\$900

Ex S.N.Agnew Collection.

655  
**George VI**, threepences, 1947, 1948, 1951 and 1952. *Nearly uncirculated - uncirculated.* (4)

\$80

Ex S.N.Agnew Collection.



656\*  
**George VI**, threepence, 1950. *Uncirculated and rare in this condition.*

\$200

Ex S.N.Agnew Collection.

657  
**Elizabeth II**, halfcrowns, 1953, 1961-1963. *Uncirculated.* (4)

\$120

Ex S.N.Agnew Collection.

658  
**Elizabeth II**, florins, 1953, 1961-1965. *Uncirculated.* (6)

\$100

Ex S.N.Agnew Collection.



659\*  
**Elizabeth II**, Royal Mint proof florin, 1964. *FDC and very rare.*

\$3,000

660  
**Elizabeth II**, shillings, 1953, 1956-1964. *Nearly uncirculated - uncirculated, most uncirculated.* (10)

\$150

Ex S.N.Agnew Collection.



661\*  
**Elizabeth II**, shilling, 1955. *Uncirculated and extremely rare in this condition.*

\$350

Ex S.N.Agnew Collection.



662\*  
**Elizabeth II**, shilling, 1958, 'broken back' variety. *Small carbon spots, otherwise uncirculated and rare in this condition.*

\$150

Ex S.N.Agnew Collection.



663\*  
**Elizabeth II**, shilling, 1962, 'no horizon' variety. *Uncirculated and scarce, especially in this condition.*

\$100

Ex S.N.Agnew Collection.

664  
**Elizabeth II**, sixpences, 1953-1965. *Uncirculated.* (13)

\$200

The 1965 is the 'broken wing' variety.

Ex S.N.Agnew Collection.





665\*  
Elizabeth II, sixpence, 1957, type I no shoulder strap. *Small spot on reverse, otherwise good extremely fine and rare in this condition.*

\$300

Ex S.N.Agnew Collection.



666\*  
Elizabeth II, Royal Mint proof sixpence, 1964. *FDC and very rare.*

\$1,500

667  
Elizabeth II, threepences, 1953-1965. *Mostly uncirculated.* (13)

\$80

Ex S.N.Agnew Collection.



668\*  
Elizabeth II, threepence, 1955, variety with two dots on the Queen's shoulder. *Nearly uncirculated and rare in this condition.*

\$100

Ex S.N.Agnew Collection.



669\*  
Elizabeth II, threepence, 1956, type I no shoulder strap. *A few tiny spots, otherwise uncirculated and very rare as such.*

\$400

Ex S.N.Agnew Collection.



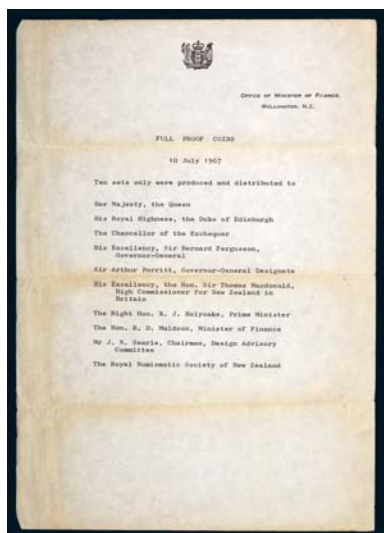
Details of Coins	Diameter (Inches)	Weight (Grams)	Design
Dollar	1.525	420	The Easings Armorial of N.Z.
50c	1.25	210	Captain Cook's bark "Endeavour"
20c	1.125	174.545	A kiwi (flightless bird)
10c	0.93	87.272	A Maori carved head
5c	0.765	43.636	A tuatara (Native Lizard)
2c	0.83	64	Two golden kowhai flowers
1c	0.69	32	A stylised fern leaf

Issued by the Treasury, Wellington, New Zealand

lot 670 part

PRESENTED TO HON. R. D. MULDOON, M.P.  
by the New Zealand Government to mark the changeover  
to Decimal Currency.

lot 670 part



670\* Elizabeth II, Royal Mint VIP proof set, 1967, one cent to one dollar (7 coins). *In a Royal Mint plush case of issue, FDC and excessively rare, one of only 10 issued to a very select group of VIPs (see accompanying letter).*

\$2,500

Ex Spink Noble Sale 42 (lot 1946) the Sir Robert Muldoon Collection and Brian Bolton Collection.

Together with a descriptive card, printed on the reverse 'Presented to Hon.R.D.Muldoon, M.P. by the New Zealand Government to mark the changeover to decimal currency' and a letter from the Office of Minister of Finance, Wellington N.Z., dated 10 July 1967 listing the 10 recipients of the 'Full Proof Coins'.



672\* Elizabeth II, Royal Mint, VIP proof set, one dollar to one cent (7 coins), Royal Visit, 1981. *In plush presentation case, with official descriptive card, FDC and rare.*

\$1,200

With a certificate of authenticity from Dame Thea Muldoon.

Ex Spink Noble Sale 42 (lot 1953) the Sir Robert Muldoon Collection and Brian Bolton Collection.



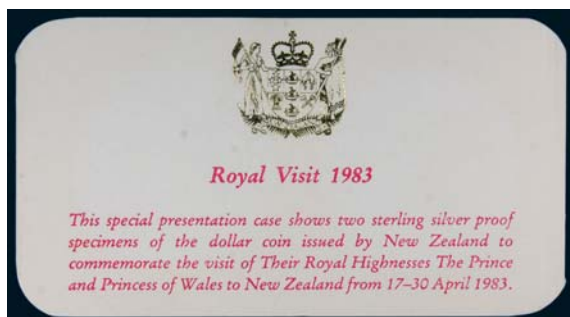
671\* Elizabeth II, Royal Mint VIP proof set, one dollar to one cent (7 coins), Royal Visit, 1977. *In plush presentation case with official descriptive card stating 10 produced, FDC and very rare.*

\$1,000

Together with card printed 'R.D.Muldoon'.

Ex Spink Noble Sale 42 (lot 1951) the Sir Robert Muldoon Collection and Brian Bolton Collection.





673\*  
Elizabeth II, Royal Mint, VIP proof set of two silver dollars, 1983 Royal Visit. *In plush presentation case with official descriptive card, only 15 issued, FDC and very rare.*

\$800

Ex Noble Numismatics Sale 102 (lot 643) and Brian Bolton Collection.



674\*  
Elizabeth II, Royal Mint, VIP proof set of two silver dollars, Royal Visit, 1986. *In plush presentation case, with official descriptive card, FDC and rare.*

\$800

Ex Noble Numismatics Sale 102 (lot 644) and Brian Bolton Collection.



675\*  
Elizabeth II, Royal Australian Mint, two dollar trial, 1985 (26mm, 9.1g) in aluminium-bronze, milled and plain security edge. *Uncirculated and very rare.*

\$1,500

An early test piece for a two dollar coin. Two dollar coins were first issued for circulation in 1990.

676  
Elizabeth II, proof gold bi-metal fifty cents, 1994 'Endeavour'. *FDC, in case of issue with certificate no 019.*

\$700

Ex S.N.Agnew Collection.

677  
**Elizabeth II**, proof gold ten dollars, 1995, 'Prospector'. *FDC, in wooden case of issue with certificate no 092.*

\$700

Ex S.N.Agnew Collection.

678  
**Elizabeth II**, proof sets, 1971, 1972 (3), 1973, 1974 (2, one without folder), 1975, 1976, 1978, 1979 (3), 1980 (2, one without folder), 1981, 1982, 1983 (2), 1985, 1986, 1987 (2), 1988. *In packs of issue unless indicated otherwise, some packs with sticky plastic, otherwise coins FDC.* (24)

\$280

679  
**Elizabeth II**, mint sets, 1967, 1968, 1969 (2, standard & polished), 1970 (2, standard & polished), 1971-1977, 1978 (2), 1979 (2), 1980 (2), 1981 (2), 1982 (2), 1983, 1984, 1985 (2), 1986 (2); also Fiji, mint set, 1984 (KM.MS7). *Most of the earlier sets with sticky plastic as usual, many sets with foxing on paper inserts, coins uncirculated.* (30)

\$120

680  
**Elizabeth II**, mint sets, 1968, 1977-1987; proof dollars, 1973, 1976, 1979, 1983 Coinage, 1987; mint one dollars, 1971-1973, 1974 Day, 1975, 1976, 1979, 1983 Coinage, 1987. *In cases and packs of issue, some cases with foxing, uncirculated - FDC.* (26)

\$200

Ex Wal Shannon Collection.

681  
**Elizabeth II**, silver ten dollars, 1998, Kiwi. *Without case of issue but with certificate, uncirculated.*

\$120

682  
**George V - George VI**, halfcrowns, 1933, 1934, 1941, 1943, 1945, 1946, florins, 1933 (2), 1934, 1935, 1937, 1941 (2). *Fine - extremely fine.* (13)

\$70

683  
**George V - George VI**, halfcrowns, 1934, 1943, 1946. *Extremely fine - nearly uncirculated.* (3)

\$100

684  
**George V - Elizabeth II**, halfcrowns, 1934, 1937, 1943, 1946; florins, 1936, 1937, 1943, 1965; shilling, 1934; sixpences, 1933, 1937, 1945; threepences, 1934 (2), 1944, 1946, 1952 (2); pennies, 1946, 1947 (2), 1953; halfpennies, 1941, 1947, 1950, 1951 (2). *Fine - uncirculated.* (27)

\$100

685  
**George V - Elizabeth II**, halfcrowns, 1951, 1962 and 1965; florins, 1934, 1941, 1943 and 1965; shillings, 1937 and 1948; sixpence, 1965; threepences, 1946 and 1965. *Good very fine - uncirculated.* (12)

\$100

686  
**George V - Elizabeth II**, florins, 1934 (2), 1935, 1937 (2), 1941, 1942, 1943, 1945; shillings, 1934, 1944; sixpences, 1933, 1936, 1943, 1952; threepences, 1933 (3), 1934 (4), 1936, 1941, 1946; penny, 1954. *Fine - extremely fine.* (26)

\$120

687  
**George V - Elizabeth II**, threepence, 1935; sixpence, 1934; shilling, 1933; florin, 1963; halfcrown, 1937, 1940 Centennial, 1942, 1943, 1945, 1950, 1951; fifty cents, 1994 bi-metal; one dollar, 1990 Waitangi; aluminium bronze, 2006; two dollars, 2006; ten dollars, 1995, 1997, 1998; proof ten dollars, 1996; tokens, Ashton, H., Auckland penny, 1863 (A.21); De Carle, E & Co, Dunedin penny, 1862 (A.102). *Poor - FDC.* (21)

\$200

688  
**George VI - Elizabeth II**, crowns 1949 and 1953; dollar, 1970 Mt Cook. *Uncirculated.* (3)

\$50

Ex S.N.Agnew Collection.

689  
**George VI**, florins, 1950 and 1951. *Good extremely fine; extremely fine.* (2)

\$100



part

690\*  
**George VI - Elizabeth II**, sixpences, 1937, 1939-1941, 1942 (2)-1948, 1950-54. *Extremely fine - nearly uncirculated, the cupro-nickel with spotty reverses, the 1941 and the unslabbed 1942 illustrated.* (15)

\$400

One 1942 in a slab by ANACS as MS63.

691  
**George VI - Elizabeth II**, halfpenny set, 1940-1964 (27), in press-in album; five coin silver proof set, 1990 Treaty of Waitangi; specimen set, 1965; mint set, 1965; proof silver dollar, 1986 Royal Visit, 1990 Treaty of Waitangi; mint one dollars (all in cases), 1967, 1970 Mount Cook, 1974 Commonwealth Games (5); also Cook Islands, mint one dollar (all in cases), 1983, 1986 60th Birthday QEII, 1986 Royal Wedding (KM.7,31,32) (3), and three dollars banknote in folder, undated (1987) (P.3a), AAA 015474. *The first set album damaged, fine - uncirculated, the rest uncirculated - FDC.* (16 + halfpenny set)

\$100

692  
**Miscellaneous tokens and checks**, includes telephone testing tokens (2); Dunedin Corporation Tramways penny token, includes both varieties (4); milk tokens, metal (8) and plastic (32); other plastic tokens (9). *Mostly fine - very fine.* (55)

\$70



693

**Communion token**, Free Church of Scotland, (used in Otago), undated (c1840s) (L.371; GRW.118; C.6457; B.7503). *Very fine.*

\$50

Although a stock Scottish issue, some were brought to New Zealand by passengers on 'John Wickliffe' in 1848.

694

**United Fire Brigades Association NZ Long Service Medal**, 1891, for five years service, in silver, inscribed to, 'Fireman John Vincent By The Mt. Eden V. Fire Brigade Aug. 7. 1891'. *Edge nicks, bumps and scratches, otherwise fine.*

\$200

Ex John Houstone Collection.



part

695\*

**Bicentenary of Captain Cook's Second Voyage**, Hawke's Bay & Gisborne Savings Bank, 1972, set of three in gold (9ct, 37.9g), silver and bronze (all 38mm), the gold medal with edge number 136 (M&P 1972/1). *In sealed packets in official case of issue, marking on lid lining, uncirculated.* (3)

\$750

## THE BRIAN BOLTON COLLECTION OF TRADESMEN'S TOKENS, CHECKS, DISCOUNT & SPECIAL PURPOSE TOKENS

### TRADESMEN'S TOKENS



696\*

**Alliance Tea Company**, Christchurch penny, 1866 (A.7; L.301). *Red and brown uncirculated and very rare in this condition, probably the finest known.*

\$3,000

Ex Noble Numismatics Sale 89 (lot 1137).



697\*

**Alliance Tea Company**, Christchurch penny, 1866 (A.8; L.301a). *Even brown patina, very fine/good very fine and very rare in this condition, probably the finest known.*

\$1,500

Ex Dunbar Sloane, July 2012.



698\*

**Anderson's, D.**, Wellington penny, undated (A.9; L.302). *Two die breaks through obverse, good extremely fine and very rare in this condition, one of the finest known.*

\$1,000

Ex Spink Australia Sale 29 (lot 2551) the Strathburn Collection.



699\*

**Anderson's, D.**, Wellington halfpenny, undated (A.10; L.302a). *Lacquered with dark brown patina, otherwise good extremely fine and very rare in this condition, one of the finest known.*

\$1,500

Ex Noble Numismatics Sale 94 (lot 901).



700\*

**Ashton, H.**, Auckland halfpenny, 1858 (A.19; L.303). *Peripheral die breaks on the reverse, grey brown patina, nearly extremely fine and rare thus.*

\$250

Ex P & M Eccles, private purchase February 1985.



701\*  
**Ashton, H.**, Auckland halfpenny, 1859 (A.20; L.303a). *Traces of mint red both sides, dusty extremely fine and rare in this condition.*

\$300

Ex P & M Eccles, private purchase December 1985.



705\*  
**Ashton, H.**, Auckland penny, 1863 (A.24; L.303e). *Even brown patina, good very fine.*

\$250

Ex Spink Australia Sale 29 (lot 2561, part) Strathburn Collection, per Peter Eccles.



702\*  
**Ashton, H.**, Auckland penny, 1862 (A.21; L.303b). *Glossy brown patina, extremely fine and one of the finest known.*

\$500

Ex Antiquarius, June 1990 from H.Robinson Collection.



706\*  
**Auckland Licensed Victuallers Association**, Auckland penny, 1871 (A.327; L.304b). *Considerable mint red on reverse, proof-like uncirculated and very rare thus, probably the finest known.*

\$600

Ex Auckland Coin & Bullion, July 1985.



703\*  
**Ashton, H.**, Auckland penny, 1863 (A.22; L.303c). *Lacquered, brown patina, nearly extremely fine.*

\$150

Ex Auckland Coin & Bullion Exchange per Jim Johnson, April 1986.



707\*  
**Auckland Licensed Victuallers Association**, Auckland penny, 1871 (A.326; L.304a). *Brown and red uncirculated, reverse proof-like, and very rare in this condition, probably the finest known.*

\$750

Ex Jaggards in 1992.



704\*  
**Ashton, H.**, Auckland penny, 1863 (A.23; L.303d). *Brown with some red, spot lacquered, otherwise nearly uncirculated and rare thus.*

\$400

Ex Noble Numismatics Sale 78B (lot 2611) W.H.Lampard Collection.



708\*  
**Auckland Licensed Victuallers Association**, Auckland penny, 1871 (A.328; L.304). *Attractive iridescent mint bloom, uncirculated and very rare in this condition, one of the finest known.*

\$1,000





709\*

**Auckland Licensed Victuallers Association, Auckland penny, 1871 (A.-; L.304d) dies as Lampard I:B (Heyde B: II). Contact mark on cheek, otherwise nearly extremely fine and possibly unique.**

\$5,000

Ex Noble Numismatics Sale 78B (lot 2617) W.H.Lampard Collection and previously purchased from Peter Eccles.



713\*

**Beath, G.L. & Co., Christchurch penny, undated (A.36; L.306b). Red and brown obverse, proof-like uncirculated reverse, rare in this condition, one of the finest known.**

\$500

Ex P & M Eccles, August 1989.



710\*

**Barley, Charles C., Auckland penny, 1858 (A.27; L.305). Brown and red, uncirculated and rare in this condition, one of the finest known.**

\$2,000

Ex Noble Numismatics Sale 78B (lot 2619) W.H.Lampard Collection, previously a private purchase in January 1976.



714\*

**Beath, G.L. & Co., Christchurch penny, undated (A.38; L.306c). Brown and red, nearly uncirculated.**

\$350

Ex Auckland Coin & Bullion Exchange, July 1985.



711\*

**Beath, G.L. & Co, Christchurch penny, undated (A.32; L.306). Light gold and brown patina, extremely fine.**

\$150

715\*

**Beath, G.L. & Co., Christchurch penny, undated (A.40; L.306a). Nearly extremely fine and rare in this condition.**

\$250

Ex Auckland Coin & Bullion Exchange, August 1986.



712\*

**Beath, G.L. & Co., Christchurch penny, undated (A.35; L.306d). Red and brown, nearly uncirculated and rare in this condition, one of the finest known.**

\$500

Ex P & M Eccles, December 1985.



716\*

**Beaven, S., Invercargill penny, 1863 (A.42; L.307). Traces of old mint red, good extremely fine and rare.**

\$500

Ex Mowbray, December 2004.



717\*  
Brown & Duthie, New Plymouth penny, 1866 (A.50; L.308).  
*Nearly uncirculated and rare thus.*

\$300

Ex Australian Coin Auctions, March 1998.



721\*  
Caro, J. & Co., Christchurch penny, undated (A.62; L.309).  
*Die axis upset by 90 degrees to the right, in gilt copper, nearly extremely fine and extremely rare.*

\$500



718\*  
Caro, J. & Co., Christchurch penny, undated (A.62; L.309).  
*Upright die axis, evidence of die clashing, good very fine and scarce thus.*

\$200



722\*  
Clark, Archibald, Auckland penny, 1857 (A.64; L.310).  
*Traces of mint red, uncirculated and very rare in this condition, one of the finest known.*

\$900

Ex Auckland Coin & Bullion Exchange per Jim Johnson, December 1984.



719\*  
Caro, J. & Co., Christchurch penny, undated (A.62; L.309).  
*Crescent die break on obverse, dark brown patina, upset die axis (or at 180 degrees) and some evidence of die clashing, good very fine and rare thus.*

\$500

Ex Antiquarius, May 1990, H.Robinson Collection.



723\*  
Clarkson, S., Christchurch penny, 1875 (A.65; L.311a).  
*Attractive bluish brown patina with glossy fields, nearly uncirculated.*

\$500

Ex Noble Numismatics Sale 78B (lot 2637) W.H.Lampard Collection and previously from P & M Eccles in 1982.



720\*  
Caro, J. & Co., Christchurch penny, undated (A.62; L.309).  
*Similar die state to the previous but die axis at 90 degrees rotation, red and brown uncirculated and very rare in this condition.*

\$700

Ex Auckland Coin & Bullion Exchange, January 1987.



724\*  
Clarkson, S., Christchurch penny, 1875 (A.66; L.311).  
*Dark tone, nearly extremely fine.*

\$200

Ex Antiquarius, August 1989, H.Robinson Collection.





725\*  
**Clarkson, S.**, Christchurch penny, 1875 (A.67; L.311b).  
*Dull dark blue brown patina with traces of mint red, nearly uncirculated and rare thus.*

\$300

Ex Auckland Coin & Bullion Exchange, March 1980.



729\*  
**Clarkson & Turnbull**, Timaru penny, 1865 (A.71; L.312b).  
*Brown nearly extremely fine and rare thus.*

\$300

Ex P & M Eccles, March 1990.



726\*  
**Clarkson, S.**, Christchurch penny, 1875 (A.68; L.311c).  
*Attractive glossy brown with some original mint red virtually uncirculated and rare in this condition.*

\$800

Ex Noble Numismatics Sale 78B (lot 2639) W.H.Lampard Collection and previously from Jim Johnson in 1982.



730\*  
**Coombes, Samuel**, Auckland penny, undated (A.76; L.313).  
*Attractive dark grey and red brown patina with some original mint red, nearly uncirculated and very scarce thus.*

\$800

Ex Noble Numismatics Sale 78B (lot 2645) W.H.Lampard Collection and previously from P & M Eccles auction in 1977.



727\*  
**Clarkson & Turnbull**, Timaru penny, 1865 (A.69; L.312).  
*Traces of mint red, extremely fine.*

\$300



731\*  
**Coombes, Samuel**, Auckland penny, undated (A.77; L.313a).  
*Red and brown nearly uncirculated and rare thus, one of the finest known.*

\$900

Ex Noble Numismatics Sale 78B (lot 2646) and previously from P & M Eccles in 1977.



728\*  
**Clarkson & Turnbull**, Timaru penny, 1865 (A.70; L.312a).  
*Obverse rim nick at 6 o'clock, scratch in reverse field, otherwise very fine.*

\$100

Ex P & M Eccles, July 1985.



732\*  
**Coombes, Samuel**, Auckland penny, undated (A.78; L.313b).  
*Good very fine and very rare in this condition.*

\$1,000



733\*  
**Day & Mieville**, Dunedin penny, 1857 (A.98; L.314). *Red brown patina, extremely fine.*

\$200

Ex Auckland Coin & Bullion Exchange, November 1985.



737\*  
**Forsaith, T.S.**, Auckland halfpenny, 1858 (A.131; L.316a). *Reddish brown patina, old scratch beside date, nearly extremely fine and rare in this condition.*

\$800

Ex A.H.F.Baldwin Collection (lot 179) and Noble Numismatics Sale 87 (lot 1517).



734\*  
**De Carle, E. & Co.**, Dunedin penny, 1862 (A.101; L.315b). *Attractive glossy patina, nearly uncirculated and rare thus.*

\$400

Ex Spink Australia Sale 29 (lot 622) Strathburn Collection per Auckland Coin & Bullion Exchange.



738\*  
**Gaisford & Edmonds**, Christchurch penny, 1875 (A.142; L.317). *Traces of mint red, nearly uncirculated and rare thus.*

\$500

Ex P & M Eccles, March 1990 and previously L.J.Dale Collection.



735\*  
**De Carle, E. & Co.**, Dunedin penny, 1862 (A.102; L.315a). *Brown and red, nearly uncirculated and rare in this condition.*

\$300

Ex Auckland Coin & Bullion Exchange, September 1986.



739\*  
**Gilmour, John**, New Plymouth, penny, undated (A.143; L.318). *Light reddish brown, nearly uncirculated and rare thus.*

\$250

Ex P & M Eccles, November 1984.



736\*  
**Forsaith, T.S.**, Auckland penny, 1858 (A.130; L.316). *Brown and red patina, gem uncirculated and very rare as such and probably the finest known.*

\$2,500

Ex Spink Australia Sale 8 (lot 234a), Sale 18 (lot 991) Utrecht Collection and Sale 29 (lot 2646) Strathburn Collection per Auckland Coin & Bullion Exchange.



740\*  
**Gilmour, John**, New Plymouth penny, undated (A.144; L.318a). *Peripheral die breaks on obverse, brown and red, uncirculated, rare especially in this condition, probably the finest known.*

\$1,000

Ex Noble Numismatics Sale 96 (lot 782).





741\*  
**Gittos, B.**, Auckland penny, 1864 (A.149; L.319). *Traces of mint red, good extremely fine.*

\$350

Ex Australian Coin Auctions, per Peter Eccles, March 1998.



745\*  
**Hall, Henry J.**, Christchurch penny, undated (A.159; L.322c). *Considerable mint red, blue and brown tone, uncirculated and rare in this condition, one of the finest known.*

\$1,500

Ex A.H.Baldwin, London, January 2011.



742\*  
**Gourlay, T.W. & Co.**, Christchurch penny, undated (A.150; L.320). *Red brown patina, reverse rim nick at 9 o'clock, otherwise good extremely fine and rare in this condition.*

\$600

Ex Auckland Coin & Bullion Exchange, May 1987.



746\*  
**Hall, Henry J.**, Christchurch kangaroo and emu mule penny, undated, upset die axis 180 degrees (A.160; L.322d). *Red brown with traces of red, uncirculated and very rare.*

\$1,500

Private purchase from David Baird, Auckland, June 1989.



743\*  
**Gourlay, T.W. & Co.**, Christchurch penny, undated (A.151; L.320a). *Dark brown patina with traces of red, two die cuds on obverse rim, good extremely fine and rare.*

\$350

Ex A.H.Baldwin Collection, Baldwin's Sale 72, 4 October 2011 (lot 72, part) and Noble Numismatics Sale 100 (lot 1120).



747\*  
**Hall, Henry J.**, Christchurch proof halfpenny, undated, die axis upset 180 degrees (A.161; L.322). *Attractive brilliant bronzed patina, FDC and extremely rare as such.*

\$1,500

Ex A.H.Baldwin, London, January 2011.



744\*  
**Gratten, R.**, Auckland penny, 1872 (A.152; L.321). *Dark blue grey patina, good extremely fine.*

\$200

Ex Auckland Coin & Bullion Exchange, January 1984.



748\*  
**Hall, Henry J.**, Christchurch halfpenny, undated (A.161; L.322) normal die axis. *Red brown with traces of mint red, nearly uncirculated.*

\$300



749\*

Hall, Henry, J., Christchurch/Levy, L., Wellington, mule halfpenny, undated (A.162; L.322a). *Reddish brown, uncirculated and rare.*

\$1,500

Ex Auckland Coin & Bullion Exchange, May 1987.



750\*

Hall, H.J., Christchurch/Dease Hobart mule halfpenny, undated, die axis at 180 degrees (A.163; L.322b). *Red brown patina, uncirculated and rare.*

\$1,500

Ex Auckland Coin & Bullion Exchange, July 1987.



751\*

Hall, H.J., Christchurch penny, undated (A.164; L.322e). *Considerable mint red, uncirculated and rare in this condition, one of the finest known.*

\$750

Ex Auckland Coin & Bullion Exchange, August 1985 and previously Utrech Collection, Spink Australia 18 (lot 579).



752\*

Hall, H.J., Christchurch penny, undated (A.165; L.322f). *Attractive brown patina, good extremely fine.*

\$200

Ex Antiquarius, November 1985.



753\*

Hall, H.J., Christchurch pennies, undated (A.165, -, 168, 169; L.322f, g, h, i), the last normal die axis, the others are upset at 180 degrees. *Good very fine or better with even brown patinas. (4)*

\$400

The third ex Auckland Coin & Bullion Exchange, August 1986.



754\*

Hall, H.J., Christchurch penny, undated (A.172; L.322k). *Light brown patina with original mint red in lettering, good extremely fine and rare in this condition.*

\$750

Ex Auckland Coin & Bullion Exchange, July 1986.





755\*

**Hall, H.J.**, Christchurch penny, undated (A.177; L.3221). *Full glossy reddish brown uncirculated with only traces of central planchet pitting in manufacture, one of the finest known and very rare thus.*

\$1,500

Ex Noble Numismatics Sale 78B (lot 2671) W.H.Lampard Collection, previously from J.Johnson in 1981 and ex A.H.F.Baldwin Collection, Spink Australia Sale 3 (lot 185 part).



756\*

**Hall, H.J.**, Christchurch pennies, undated restrikes, one with normal die axis the other upset 180 degrees (A.177; L.3221). *Reddish brown patinas, as struck. (2)*

\$2,000

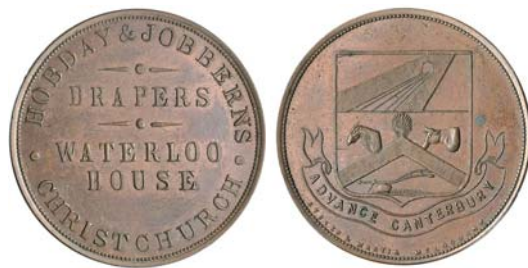


757\*

**Hall, H.J.**, Christchurch penny, undated (A.179; L.322n). *Iridescent bloom, uncirculated and very rare, one of the finest known.*

\$200

Ex Noble Numismatics Sale 78B (lot 2673) W.H.Lampard Collection and previously from a P & M Eccles Sale in 1977 (lot 609).



758\*

**Hobday & Jobbens**, Christchurch penny, undated (A.249; L.323). *Light pink red brown, uncirculated and rare thus.*

\$600

Ex Noble Numismatics Sale 78B (lot 2675), W.H.Lampard Collection acquired by him in 1977.



759\*

**Hobday & Jobbens**, Christchurch penny, undated (A.249; L.323). *Considerable original mint red, uneven tone on the reverse, uncirculated and rare thus.*

\$500

Ex Auckland Coin & Bullion Exchange, August 1989 and previously Utrecht Collection, Spink Australia Sale 18 (lot 1011).



760\*

**Hobday & Jobbens**, Christchurch penny, undated (A.253; L.323a). *Extremely fine and rare thus.*

\$300

Ex Auckland Coin & Bullion Exchange, March 1987.



761\*

**Holland & Butler**, Auckland penny, undated (A.263). *Brown and red, uncirculated and rare thus.*

\$350

Ex Noble Numismatics Sale 103 (lot 1194).





762\*  
**Hurley, J. & Co., Wanganui penny, undated (A.276; L.325).**  
*Dusty dark tone with mint red, nearly uncirculated.*

\$300

Ex Coin Trends, June 2006.



763\*  
**Hurley, J. & Co., Wanganui halfpenny, undated (A.277; L.325a) by Todman London.** *Good extremely fine.*

\$100

Ex Noble Numismatics Sale 103 (lot 1198) M.Ward Collection.



764\*  
**Jones & Williamson, Dunedin penny, 1858 (A.308; L.326).**  
*Good extremely fine.*

\$200

Ex Spink Noble Sale 17 (lot 654).



765\*  
**Kirkcaldie & Stains, Wellington penny and halfpenny, undated (A.311, 312; L.327, 327a).** *Brown and red, nearly uncirculated. (2)*

\$300

The first from Auckland Coin & Bullion in October 1984, the second from Coin Trends in July 2008.



766\*  
**Levy, Lipman, Wellington penny, undated (A.321; L.328).**  
*Toned original mint red, uncirculated and rare in this condition, one of the finest known.*

\$400

Ex Auckland Coin & Bullion Exchange in August 1989 and previously Spink Australia Sale 29 (lot 2748) the Strathburn Collection.



767\*  
**Levy, Lipman, Wellington penny, undated (R.321; L.328a)**  
*struck with upset die axis 180 degrees. Red brown, nearly uncirculated and scarce thus.*

\$300

Ex Auckland Coin & Bullion Exchange, June 1985.



768\*  
**Levy, Lipman, Wellington halfpenny, undated (A.322; L.328e).** *Good extremely fine and rare in this condition, one of the finest known.*

\$1,500



769\*  
**Levy, Lipman, Wellington head mule penny, undated (A.323; L.328b).** *Brown and red, uncirculated and rare.*

\$750

Ex Auckland Coin & Bullion Exchange, October 1985.





770\*  
 Levy, Lipman, Wellington pattern penny, Australia seated figure (A.324) by W.J.Taylor. *Glossy brown uncirculated and rare.*

\$750

Private purchase from David Baird, Auckland, June 1989.



774\*  
 Mason Struthers & Co, Christchurch pennies, undated (A.355; L.330a). *Extremely fine; obverse die cud at 8 o'clock, dark tone with mint red, nearly uncirculated.* (2)

\$750

The second ex A.H.Baldwin Collection, Baldwin's Sale 72, 4 October 2011 (lot 152) Noble Numismatics Sale 100 (lot 1168, part).



771\*  
 Levy, Lipman, Wellington, Hedberg Hobart mule halfpenny, undated (A.325; L.328f) 180 degree die axis. *Glossy brown reverse, obverse with subdued original red, uncirculated and rare.*

\$1,500

Ex Auckland Coin & Bullion Exchange, February 1987.



775\*  
 McCaul, George, Grahamstown penny, 1874 (A.359; L.331). *Dark blue brown patina, with considerable underlying mint bloom on obverse, nearly uncirculated and rare in this condition.*

\$350



772\*  
 Marks, Morris, Auckland penny, undated (A.341; L.329). *Blue grey patina, hints of mint red, very rare in this condition, one of the finest known.*

\$900

Ex Antiquarius, May 1990 (from H.Robinson Collection).



776\*  
 McCaul, George, Grahamstown penny, 1874 (A.359; L.331). *Traces of mint red on obverse, good extremely fine and rare in this condition.*

\$300

Ex Noble Numismatics Sale 78B (lot 2697, part) W.H.Lampard Collection, previously from Format of Birmingham in 1992.



773\*  
 Mason Struthers & Co., Christchurch penny, undated (A.354; L.330). *Traces of mint red, blue grey tone, nearly uncirculated.*

\$500

Ex G.C.Heyde Collection, acquired in June 1986. With old ticket from A.H.Baldwin.





777\*

Mears, J.W., Wellington halfpenny undated (A.362; L.332). *Well struck up in centre for this, hints of mint red, good extremely fine and very rare in this condition, one of the finest known.*

\$1,000

Ex Spink Australia Sale 24 (lot 814) Ken Wilson Collection.



778\*

Merrington, J.M. & Co., Nelson penny, undated (A.363; L.333). *Hairline die break rim to O in Nelson, glossy even brown patina, extremely fine.*

\$150

Ex Antiquarius, May 1990 (from H.Robinson Collection).



779\*

Milner & Thompson, Christchurch pennies, 1881 and undated (A.376, 377, 378; L.334, a, b). *The first red and brown extremely fine, the last two brown and red uncirculated. (3)*

\$500

First ex Auckland Coin & Bullion Exchange, November 1984, others from P & M Eccles in December 1985.



780\*

Milner & Thompson, Christchurch smaller size pennies, 1881 and undated (A.379-383; L.334c-g). *Nearly uncirculated - full mint red uncirculated. (5)*

\$750

First ex Auckland Coin & Bullion Exchange, March 1987, the last from P & M Eccles in December 1985.





781\*  
**Milner & Thompson**, Christchurch, Maori head/Maori scene small size penny, undated (A.-; L.334h; Meek 35E). *Die upset 180 degrees, choice proof-like uncirculated and excessively rare, the finest of two known.*

\$20,000

Ex A.H.F. Baldwin, K.Frost (lot 554), Spink Australia Sale 20 (lot 417) and A.Sutherland, Noble Numismatics Sale 70 (lot 783) Collections and Noble Numismatics Sale 79 (lot 884).



782\*  
**Morrin & Co.**, Auckland penny, undated (A.387; L.335). *Attractive brown patina, nearly uncirculated and rare thus.*

\$300

Ex Auckland Coin & Bullion Exchange, November 1984.



783\*  
**Morrin & Co.**, Auckland penny, undated (A.388; L.335a). *Die break from rim to second I of SPIRIT, light brown patina with hints of red, nearly uncirculated and rare in this condition.*

\$350

Ex P & M Eccles, November 1986.



784\*  
**Morrin & Co.**, Auckland penny, undated (A.389; L.335c). *Red and light brown uncirculated and very rare in this condition, one of the finest known.*

\$2,500

Ex Noble Numismatics Sale 70 (lot 785) A.Sutherland Collection.



785\*  
**Morrin & Co.**, Auckland penny, undated (A.-; L.335b). *Glossy brown, nearly extremely fine and very rare, one of the finest known.*

\$1,500

Ex Howard Mitchell, May 1998.



786\*  
**New Zealand**, pattern penny, 1879 (A.399; L.336) by Joseph Moore, Birmingham. *Red and brown, FDC and very rare.*

\$6,000

Ex Mowbray in November 2006.



787\*  
**Perkins & Co.**, Dunedin penny, undated (A.435; L.337). *Die breaks as usual on both sides, slightly dusty tone, dark brown patina, extremely fine and rare in this condition.*

\$500

Ex Auckland Coin & Bullion Exchange, July 1986.



791\*  
**Pratt, William**, Christchurch penny, undated (A.444; L.339a). *Blue brown patina with hints of red, nearly uncirculated and rare thus.*

\$500

Ex Auckland Coin & Bullion Exchange, January 1986.



788\*  
**Perkins & Co.**, Dunedin halfpenny, undated (A.436; L.337a). *Some mint red, good extremely fine and very rare in this condition, probably the finest known.*

\$2,500

Ex Noble Numismatics Sale 84 (lot 518).



792\*  
**Pratt, William**, Christchurch penny, undated (A.445; L.339b). *Hairline die break on obverse rim to scroll, blue brown patina with hints of red, nearly uncirculated and rare in this condition, one of the finest known.*

\$500

Ex P & M Eccles, August 1985.



789\*  
**Petersen, W.**, Christchurch penny, undated (A.437; L.338). *Light brown patina with some mint red on the obverse, nearly uncirculated and very rare in this condition, one of the finest known.*

\$1,000

Ex Auckland Coin & Bullion Exchange, April 1986, previously ex G.C.Heyde Collection.



793\*  
**Pratt, William**, Christchurch penny, undated (A.446; L.339c). *Dark tone with traces of red, good extremely fine and very rare thus.*

\$750

Ex Noble Numismatics Sale 59 (lot 1116).



790\*  
**Pratt, William**, Christchurch penny, undated (A.443; L.339). *Medium brown good very fine and rare.*

\$250

Ex Antiquarius, August 1992.



794\*  
**Reece, Edward**, Christchurch penny, undated (A.447; L.340). *Medium brown patina, good extremely fine and rare in this condition.*

\$750

Ex Noble Numismatics Sale 78B (lot 2718) and previously from Format of Birmingham in 1986.





795\*  
**Reece, Edward, Christchurch penny, undated (A.448; L.340a).** *Uneven brown patina, with traces of mint red, nearly uncirculated and rare in this condition.*

\$400

Ex Downie, December 1992.



796\*  
**Reece, Edward, Christchurch penny, undated (A.449; L.340b).** *Even brown patina, good extremely fine and rare thus.*

\$400

Ex Auckland Coin & Bullion Exchange, July 1986.



797\*  
**Reece, Edward, Christchurch halfpenny, undated (A.450; L.340c this token).** *Glossy medium brown patina, nearly extremely fine and rare.*

\$500

Ex Noble Numismatics Sale 78B (lot 2722) W.H.Lampard Collection, and previously from P & M Eccles Sale in 1977.



798\*  
**Reece, Edward, Christchurch halfpenny, undated (A.451; L.340e).** *Fine and very rare.*

\$1,000

Acquired in November 1993.



799\*  
**Reece, Edward, Christchurch halfpenny, undated (A.452; L.340d).** *Brown and red, nearly uncirculated and very rare in this condition.*

\$750

Ex Noble Numismatics Sale 100 (lot 1198) and previously A.H.Baldwin Collection, Baldwin's Sale 72, 4 October 2011 (lot 190, part) with old ticket in Albert Baldwin's hand.



800\*  
**Smith, S.Hague, Auckland penny, undated (A.470; L.341).** *Underlying mint bloom, some blotchy toning, uncirculated and very rare in this condition, one of the finest known.*

\$750

Ex Noble Numismatics Sale 96 (lot 1009) Ranald Hill Collection, previously from a Status Sale, May 2008.



801\*  
**Smith, S.Hague, Auckland penny, undated (A.474; L.341c).** *Extremely fine.*

\$200

Ex A.H.Baldwin Sale October 2011.



802\*  
**Smith, S.Hague, Auckland penny, undated (A.475; L.341e).** *Die cuds on obverse at 1, 2 and 3 o'clock, extremely fine.*

\$300

Ex Auckland Coin & Bullion Exchange, August 1989 (from H.Robinson Collection).



803\*  
**Smith, S.Hague, Auckland penny, undated (A.477; L.341f).**  
*Die cud on obverse at 1-3 o'clock, nearly extremely fine.*  
 \$200

Ex A.H.Baldwin Sale, October 2011.



807\*  
**Somerville, M., Auckland penny, 1857 (A.499; L342b).** *Red brown patina, good extremely fine and rare thus.*  
 \$300

Ex Auckland Coin & Bullion Exchange, February 1990.



804\*  
**Smith, S.Hague, Auckland penny, undated (A.478; L.341d).**  
*Traces of mint red, good extremely fine.*  
 \$400



808\*  
**Somerville, M., Auckland penny, 1857 (A.500; L342c).**  
*Light crimson grey with hints of red, nearly uncirculated and rare thus.*  
 \$400



805\*  
**Somerville, M., Auckland penny, 1857 (A.497; L.342).**  
*Mostly red uncirculated, the finest known.*  
 \$2,000

Ex Noble Numismatics Sale 87 (lot 1605) and previously from Spink Australia in Nov 1979 (A.H.F.Baldwin Collection, out of lot 245?).



809\*  
**Union Bakery Company, Christchurch penny, undated (A.588; L.343).** *Faded red brown patina, nearly uncirculated and rare in this condition.*  
 \$600

Ex Auckland Coin & Bullion Exchange, April 1986 and previously G.C.Heyde Collection.



806\*  
**Somerville, M., Auckland penny, 1857 (A.498; L342a).** *Red and brown, nearly uncirculated and rare thus.*  
 \$500

Ex Noble Numismatics Sale 70 (lot 797) A.Sutherland Collection.





810\*  
**United Service Hotel, Auckland, (A.590, 591; L.344, a).**  
*Nearly extremely fine; nearly uncirculated. (2)*

\$300

The first ex Auckland Coin & Bullion Exchange, December 1984 and the second from Noble Numismatics Sale 96 (lot 1166) Ranald Hill Collection.



811\*  
**Wallace, James, Wellington penny, 1859 (A.592; L.345 [this token]).**  
*Trace of mint red in name, brown, extremely fine/nearly extremely fine and rare thus.*

\$750

Ex P & M Eccles Sale, W.H.Lampard Collection, Noble Numismatics Sale 78B (lot 2733), Sale 94 (lot 1012), Sale 96 (lot 1066) Ranald Hill Collection.



812\*  
**Wallace, James, Wellington halfpenny, 1859 (A.593; L.345a).**  
*Flaw in flan on obverse field below & C, die cud at rim on obverse at 9 o'clock, nick in reverse field, otherwise glossy brown, good very fine or better and rare, one of the finest known.*

\$900

Ex Noble Numismatics Sale 85 (lot 555) and Sale 96 (lot 1068) Ranald Hill Collection.



813\*  
**Waters, Edward, Auckland penny, undated (A.609; L.346).**  
*Attractive glossy brown, nearly uncirculated and rare in this condition.*

\$800

Ex A.H.Baldwin Sale 72, October 2011.



814\*  
**Waters, Edward, Auckland penny undated (A.610; L.346a this token).**  
*Considerable original mint red, uncirculated and very rare in this condition, the finest known.*

\$2,000

Ex Noble Numismatics Sale 78B (lot 2736) W.H.Lampard Collection and previously G.C.Heyde (lot 617 part) Collection in 1974.



815\*  
**Wilson, A.S., Dunedin penny, 1857 (A.639; L.347).**  
*Attractive brown patina, good very fine and rare.*

\$1,000



816\*  
**Ireland, Hodgins, William, Clogh Jordan penny, 1858 (A.659).**  
*Extremely fine.*

\$100



817\*  
**Holloway, Professor, London bronzed proof penny, 1857,**  
thin flan (A.665). *Nearly FDC and rare.*

\$750



818\*  
**Holloway, Professor, London bronzed proof halfpenny, 1857**  
(A.667). *FDC and rare.*

\$750