

PROCLAMATION COINS



1312*
Brazil, Mary and Peter, gold six thousand four hundred reis or half Johanna, 1783R (KM.C.53.2). *Nearly uncirculated.*
 \$1,000



1313*
Colombia, Charles III, gold eight escudos, Nuevo Reino Mint, 1803JJ (KM.62.1). *Fine.*
 \$1,200

1314
Great Britain, George III, silver shilling, 1787 (S.3743). *Good very fine.*
 \$50



1315*
Great Britain, George III, copper cartwheel twopence, 1797 (S.3776). *Good very fine.*
 \$200

Ex A.J.Morley Collection, Noble Numismatics Sale 77 (lot 860).

1316
Great Britain, George III, copper cartwheel twopence, 1797 (S.3776). *Very fine.*
 \$100

1317
Great Britain, George III, copper cartwheel twopence, 1797 (S.3776). *Nearly very fine; good very fine, graffiti on reverse.* (2)
 \$100

1318
Great Britain, George III, copper cartwheel twopence and penny, 1797 (S.3776, 7). *Edge knocks on both, good fine - very fine.* (2)
 \$100



1319*
Great Britain, George III, copper cartwheel penny, 1797 (S.3777) ten leaves in wreath. *Red brown patina, blotchy tone, otherwise good extremely fine.*
 \$300



1320*
Great Britain, George III, third copper issue, halfpenny, 1799 (S.3778). *Nearly uncirculated.*
 \$200



1321*
India, East India Company, Bengal Presidency, Murshidabad Mint type, 1793 type, Milled issue, Perpetual 19 san sicca series of standard gold currency, in the name of Shah Alam II (A.H. 1173-1221, A.D. 1759-1806), gold mohur, (12.34 grams), regnal year 19 (fixed), and dated A.H. 1202 = A.D. 1784-5 and with oblique milling to right, probably a jeweller's copy, (Pr.64, KM.100). *Surface marks, has been mounted, otherwise nearly very fine and scarce.*
 \$600



1322*
Mexico, Ferdinand VI, pillar dollar type eight reales, 1752MF Mexico City Mint (KM.104.1). *Grey toned, good very fine.*

\$200



1325*
Spain, Charles III, gold four escudos, 1787/6, Madrid Mint (KM418.1a; Fr.1396). *Extremely fine.*

\$900



1323*
Mexico, Charles III, silver eight reales, 1807TH, Mexico City Mint, (KM.109). *Edge knock and scratch on reverse, otherwise very fine.*

\$100



1326*
Spain, Charles III, gold four escudos, 1803, Madrid Mint (KM.436.1; Fr.148). *Good very fine.*

\$900



1324*
Mexico, Charles III, silver eight reales, 1808TH, Mexico City Mint (KM.110). *Good very fine.*

\$100

HOLEY DOLLARS AND DUMPS

**This Fine Holey Dollar Offered at Auction
for the First Time**



1327

New South Wales, five shillings or holey dollar, 1813, struck on a Charles III Mexico City Mint eight reales, 1808TH, dies B/2: I/6 (Mira-Noble 1808/8; Spalding 177). *Original coin worn, good fine, slightly dished, countermarks good fine/very fine and very rare.*

\$70,000

Ex Dr.Knox Collection, purchased in Sydney from Stanley Lipscombe 6/7/67.

**A Well Provenanced Holey Dollar
Ex Bentleigh Collection**



1328*

New South Wales, five shillings or holey dollar, 1813, struck on a Charles III Mexico City Mint eight reales, 1802FT, dies B/6:II/1 (Spalding-) (Mira-Noble 1802/8). *Good fine and very rare.*

\$65,000

Ex Dr G.H.Abbott Collection, Lawson's 1943; J.R.Tyrell Collection; R.Marcollo Collection; M.R.Roberts 1979; private owner (Sydney); Spink Australia (private Sale) and Bentleigh Collection.

Highly Desirable NSW Fifteen Pence



1329*

New South Wales, fifteen pence or dump, 1813 (Mira dies A/1) traces of the reverse of the Spanish American eight reales on the reverse. *Deep gun metal grey toned, well struck up on the obverse, good very fine with obverse being nearly extremely fine on the right hand side, a most attractive example of Australia's first coin.*

\$60,000

Ex A.H.F.Baldwin Collection, Spink Australia Sale 2 (lot 515) and the Robert A.Climpson Collection, Noble Numismatics Sale 85 (lot 1941).

High Grade NSW Fifteen Pence from Second Die Pairing



1330*

New South Wales, fifteen pence or dump, 1813 (Mira dies D/2). *Attractive dark grey toned nearly extremely fine and very rare, one of the finest known.*

\$60,000

Ex Noble Numismatics Sale 84 (lot 1261).



1331*

New South Wales, fifteen pence or dump, 1813 (Mira dies D/2). *Traces of reverse of original coin on the obverse, old scratch beside crown, otherwise nearly very fine and rare.*

\$18,000

Ex Noble Numismatics Sale 52 (lot 1460), Sale 53 (lot 1596) and B.J.Hibbard Collection, Noble Numismatics Sale 88 (lot 1443).



1332*

New South Wales, fifteen pence or dump, 1813 (Mira dies D/2). *Traces of reverse of original coin on obverse, grey silver toned, evenly worn reverse, very weak though legible, good fine/very good.*

\$6,500



1333*

New South Wales, fifteen pence or dump, 1813, contemporary counterfeit in copper with plain or smoothed edge. *Pitted, otherwise fair and very rare.*

\$700

Ex Dave Raymond and Pitt St excavation, 1927 later W.G. & L.M.Wright Collection, Noble Numismatics Sale 88 (lot 1883).

AUSTRALIAN GOLD COINS

ADELAIDE ASSAY OFFICE



1334*

Adelaide Assay Office, gold ingot, electrotype in gilt copper (Hunt Deacon 5), taken from the specimen formerly in the 'Nobleman Collection' and now in the British Museum. *Extremely fine.*

\$750

Ex Bentleigh Collection.

Very Rare Cracked Die First Type Adelaide Pound



1335*

Adelaide pound, first type, 1852, with inner beaded circle on reverse with ever present die break, fine milling or edge graining of the first collar used. *With 3mm scratch right side of crown on obverse, soft strike on the centre of reverse, fine and very rare.*

\$20,000

Ex Bentleigh Collection.

Attractive Early Die State Adelaide Pound



1336*

Adelaide pound, second type, 1852, with crenellated inner circle on reverse. *Early die state, extremely fine/good extremely fine and rare.*

\$20,000



1337*

Adelaide pound, second type, 1852, with crenellated inner circle on the reverse. *Some mint bloom, struck from dies in later die state with the five faint dots above (2)2 C(arats), extremely fine/good extremely fine and rare in this condition.*

\$20,000

In a slab by PCGS as AU55.



1338*

Adelaide pound, second type, 1852, with crenellated inner circle on the reverse. *An early die state striking, minor surface marks and rim bruise at 4 o'clock, otherwise good extremely fine and rare.*

\$12,500



1339*

Adelaide pound, second type, 1852, with crenellated inner circle on reverse, later die state with five dots above (2)2 C(arats). *Edge knock at 11 o'clock on obverse, good very fine and rare.*

\$8,000

Ex Bentleigh Collection.

SYDNEY MINT SOVEREIGNS



1340*

Queen Victoria, first type, 1855, with filleted head of Victoria left by James Wyon. *Surface marking, otherwise very fine.*

\$3,000



1341*

Queen Victoria, first type, 1855. *Edge bruise at 1 o'clock on obverse and light scratch in field in front of Queen's forehead, nearly very fine/very fine.*

\$2,750

Ex Bentleigh Collection.



1346*

Queen Victoria, second type, 1866. *Minor rim filing at 7 o'clock with minor hairline scratches there to remove dirt(?), otherwise even light tone, good extremely fine.*

\$800



1342*

Queen Victoria, second type, 1857. *Good fine.*

\$600

Ex Bentleigh Collection.



1347*

Queen Victoria, second type, 1867. *Obverse hairlines, otherwise nearly uncirculated with considerable mint bloom.*

\$900



1343*

Queen Victoria, second type, 1863. *Some mint bloom, surface marking, otherwise nearly extremely fine/extremely fine.*

\$750



1348*

Queen Victoria, second type, 1868. *Considerable mint bloom, miniscule hairlines on obverse, otherwise uncirculated.*

\$2,200



1344*

Queen Victoria, second type, 1864. *Nearly extremely fine.*

\$600

In a slab by ANACS as AU53



1349*

Queen Victoria, second type, 1868. *Underlying mint bloom, uncirculated.*

\$1,000



1345*

Queen Victoria, second type, 1865. *Surface marking, underlying mint bloom, nearly extremely fine/extremely fine.*

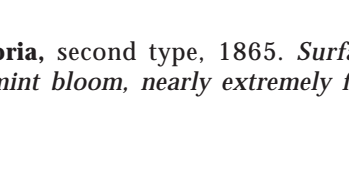
\$750



1350*

Queen Victoria, second type, 1870. *Full original mint bloom, the obverse lightly brushed, otherwise choice uncirculated and rare in this condition.*

\$1,600



1351*

Queen Victoria, second type, 1870. *Almost mark free, lightest friction on high points of obverse, otherwise uncirculated/brilliant uncirculated and rare thus.*

\$1,500

Ex Noble Numismatics Sale 65 (lot 1468).

SYDNEY MINT HALF SOVEREIGNS

Condition Census 1855 Half Sovereign Rarity



1352*

Queen Victoria, first type, 1855, with filleted head of Victoria left by James Wyon. *Date and obverse legend slightly double entered, two obverse scratches, otherwise good fine and a good example of this rarity, among the finest twelve known.*

\$50,000

Originally acquired in Sydney in the 1940s and ex Noble Numismatics Sale 84 (lot 1285A).

Finest 1855 Half Sovereign Rarity Ex Reserve Bank of Australia



1353*

Queen Victoria, first type, 1855, with filleted head of Victoria left by James Wyon. *Slight bend, contact mark above date, otherwise fine and very rare.*

\$20,000

Ex Reserve Bank of Australia Sale 29 & 30 Nov 2005 (lot 522) sold with a copy of the catalogue with prices realised list.

Outstanding First Type 1856 Half Sovereign



1354*

Queen Victoria, first type, 1856. *Scuff mark above nose, otherwise good extremely fine with underlying mint bloom, rare in this condition.*

\$15,000



1355*

Queen Victoria, first type, 1856 with filleted head of Victoria left by James Wyon. *Metal flaw on reverse field, nearly extremely fine and rare in this condition.*

\$2,750



1356*

Queen Victoria, first type, 1856, with filleted head of Victoria left, by James Wyon. *Clashed dies on obverse, good fine.*

\$1,500

Ex Bentleigh Collection.



1357*

Queen Victoria, second type, 1857, with wreathed head of Victoria left by L.C.Wyon. *Toned, with underlying mint bloom, extremely fine and rare thus.*

\$4,500



1358*
Queen Victoria, second type, 1858. *Reverse rim nick, surface porosity, otherwise nearly very fine.*

\$400



1365*
Queen Victoria, second type, 1866. *Very fine/good very fine.*

\$800



1359*
Queen Victoria, second type, 1861. *Good very fine.*

\$800

IMPERIAL SOVEREIGNS - SHIELD REVERSE



1360*
Queen Victoria, second type, 1862. *Last two figures of date high, good fine.*

\$400



1366*
Queen Victoria, 1872 Melbourne. *Nearly extremely fine.*

\$400



1361*
Queen Victoria, second type, 1863. *Good fine and rare.*

\$250



1367*
Queen Victoria, 1877 Sydney. *Nearly uncirculated.*

\$1,500



1362*
Queen Victoria, second type, 1864. *Good fine.*

\$300



1368*
Queen Victoria, 1878 Sydney. *Nearly extremely fine/good extremely fine.*

\$600



1363*
Queen Victoria, second type, 1865. *Has been bent and straightened, otherwise fine.*

\$200

1369
Queen Victoria, 1879 Sydney. *Rim bruise, otherwise good very fine.*

\$320



1364*
Queen Victoria, second type, 1866. *Very fine/good very fine.*

\$1,000



1370*
Queen Victoria, 1883 Melbourne. *Good very fine/good extremely fine and rare.*

\$800

In a slab by NGC as XF45.



1371*
Queen Victoria, 1884 Melbourne. *Uncirculated.*

\$750



1372*
Queen Victoria, 1885 Sydney. *Original frosty mint bloom, uncirculated.*

\$1,500

High Grade Rarest Shield Reverse Sovereign



1373*
Queen Victoria, 1886 Melbourne. *Underlying mint bloom, minor surface marks, otherwise nearly uncirculated and very rare in this condition, one of the finest known.*

\$25,000

In a slab by NGC as MS62.

IMPERIAL SOVEREIGNS - ST GEORGE REVERSE



1374*
Queen Victoria, 1876 Melbourne. *Nearly uncirculated.*

\$500



1375*
Queen Victoria, 1879 Melbourne (McD.157). *Nearly uncirculated.*

\$600



1376*
Queen Victoria, 1880 Melbourne. *Choice uncirculated.*

\$1,500

Ex Douro Cargo.



1377*
Queen Victoria, 1880 Melbourne. *Surface marks, otherwise uncirculated.*

\$1,200

Ex Douro Cargo.



1378*
Queen Victoria, 1880 Sydney (McD.158). *Extremely fine.*

\$450



1379*
Queen Victoria, 1884 Sydney. *Extremely fine/good extremely fine with mint bloom.*

\$500



1385*
Queen Victoria, 1892 Melbourne. *Uncirculated.*

\$500



1380*
Queen Victoria, 1886 Melbourne. *Uncirculated.*

\$600



1386*
Queen Victoria, 1896 Melbourne. *Uncirculated.*

\$500



1381*
Queen Victoria, 1886 Melbourne. *Lightly toned, nearly uncirculated.*

\$600



1387*
Queen Victoria, 1896 Sydney. *Full, subdued original mint bloom, choice uncirculated.*

\$750



1382*
Queen Victoria, young head, 1887 Sydney. *Uncirculated/choice uncirculated.*

\$600



1388*
Queen Victoria, 1897 Sydney. *Nearly uncirculated.*

\$350



1383*
Queen Victoria, 1888 Sydney (McD.176c). *Surface marks over mirror-like fields, nearly uncirculated.*

\$400



1389*
Queen Victoria, 1899 Sydney. *Brilliant, surface marks, otherwise uncirculated.*

\$450



1384*
Queen Victoria, 1889 Sydney (McD.178a). *Good extremely fine.*

\$350

1390
Edward VII, 1902 Sydney. *Nearly uncirculated.*

\$320

1391
George V, 1911 and 1919 Perth, 1915 Melbourne. *Nearly uncirculated. (3)*

\$1,000



1392*
George V, 1920 Melbourne. *Minor surface marks, frosty mint bloom, nearly uncirculated and very rare.*
 \$9,750

1393
George V, 1923 and 1924 Melbourne. *Good extremely fine. (2)*
 \$750



1394*
George V, small head, 1930 Melbourne. *Nearly uncirculated and scarce.*
 \$500

IMPERIAL HALF SOVEREIGNS



1395*
Queen Victoria, 1871 Sydney. *Good extremely fine and rare in this condition.*
 \$3,500



1396*
Queen Victoria, 1871 Sydney. *Good very fine.*
 \$600



1397*
Queen Victoria, 1872 Sydney. *Full mint bloom, uncirculated/choice uncirculated, rare in this condition, one of the finest known.*
 \$7,500

Private purchase from KJC 21/11/1996.



1398*
Queen Victoria, 1872 Sydney. *Nearly extremely fine and rare thus.*
 \$1,200



1399*
Queen Victoria, 1877 Melbourne. *Nearly very fine.*
 \$300



1400*
Queen Victoria, 1879 Sydney. *Good very fine.*
 \$600

Gem Finest Known 1880 Sydney Half Sovereign



1401*
Queen Victoria, 1880 Sydney (McD.20). *Obverse with mirror-like fields, reverse matte, virtually gem uncirculated and possibly the finest known.*

\$45,000

Nearly Mint State Rarity



1404*
Queen Victoria, 1884 Melbourne. *Hairline marks in front of face and to rim, otherwise subdued mint bloom, nearly uncirculated and very rare in this condition.*

\$18,000

Highest Grade Rarest Date Of Type



1402*
Queen Victoria, 1882 Sydney. *Hairline die breaks rim to A of Victoria and to second I, also vertically on cheek, minor obverse hairlines, otherwise full original mint bloom, choice uncirculated and extremely rare in this condition, one of the finest known.*

\$30,000



1405*
Queen Victoria, 1885 Melbourne. *Nearly very fine and rare.*

\$500



1406*
Queen Victoria, 1886 Sydney. *Nearly very fine.*

\$200

1407
Queen Victoria, young head, 1887 Sydney, old head, 1897 Sydney. *Very fine; fine. (2)*

\$350



1403*
Queen Victoria, 1883 Sydney (McD.25a). *Extremely fine with some original mint bloom, rare thus.*

\$2,000



1408*
Queen Victoria, Jubilee head, 1887 Melbourne, (McD.33a). *Well struck, nearly uncirculated.*

\$600



1409*
Queen Victoria, Jubilee head, 1887 Sydney (McD.32b). *Full original mint bloom, obverse fields mirror-like, choice uncirculated and rare thus.*

\$2,750



1410*
Queen Victoria, Jubilee head, 1893 Melbourne. *Good very fine.*

\$400



1411*
Queen Victoria, old head, 1893 Sydney. *Good extremely fine.*

\$400



1412*
Queen Victoria, 1896 Melbourne. *Considerable mint bloom, nearly uncirculated.*

\$2,200

Ex Reserve Bank of Australia Sale, lot 816.



1413*
Queen Victoria, 1896 Melbourne. *Extremely fine.*

\$700



1414*
Queen Victoria, 1897 Sydney. *Hairlines, proof-like fields, extremely fine and rare in this condition.*

\$500



1415*
Queen Victoria, 1897 Sydney. *Nearly extremely fine.*

\$250



1416*
Queen Victoria, 1900 Perth. *Very fine.*

\$250

Gem Finest Known Old Head Half Sovereign



1417*
Queen Victoria, 1900 Sydney. *Specimen-like gem uncirculated and probably the finest known.*

\$7,500

Ex Noble Numismatics Sale 48 (lot 1656).



1418*
Queen Victoria, 1900 Sydney. *Uncirculated and rare in this condition.*

\$3,000



1419*
Edward VII, 1902 Sydney. *Good extremely fine.*

\$700

1420
Edward VII, 1906 Melbourne. *Good very fine.*

\$200



1421*
Edward VII, 1906 Sydney. *Good extremely fine.*

\$200



1422*
Edward VII, 1908 Perth. *Very fine and rare.*

\$700

1423
Edward VII, 1909 Perth. *Very fine.*

\$200

1424
Edward VII, 1910 Sydney. *Extremely fine.*

\$200



1425*
George V, 1911 Sydney. *Uncirculated.*

\$400

1426
George V, 1911-12, 1914-16 Sydney. *Good extremely fine - uncirculated. (5)*

\$900

1427
George V, 1915 Melbourne. *Extremely fine.*

\$200



1428*
George V, 1915 Perth. *Nearly uncirculated.*

\$250

PATTERNS AND PROOFS

Kangaroo Office Rarity



1429*
Port Phillip, Kangaroo Office, pattern halfpenny, undated and without the maker's mark in exergue (A.783). *Extremely fine and the only one in a private collection.*

\$12,500

Ex Spink Australia Sale 20 (lot 874), Spink Noble Numismatics Sale 36 (lot 1247), Noble Numismatics Sale 87 (lot 388) and Bentleigh Collection.



1430*
Port Phillip Kangaroo Office, in bronze gilt (22mm), obverse, half ounce 1853, obverse die (heavily rusted), reverse, wreath around unofficial Coat of Arms. *Good extremely fine and extremely rare, believed only six struck.*

\$3,000

Ex Dr John Chapman Collection (Noble Numismatics Sale 88B, lot 831) and Bentleigh Collection.



lot 1431 part

**Unique Official RAM Restrike
Port Phillip Kangaroo Office Set**



1431*

Port Phillip, Kangaroo Office, official restrikes of the original 'Kangaroo Office' dies, consisting of eight uniface strikes of the obverse and reverse of the two ounce, one ounce, half ounce (reverse only), quarter ounce and advertising check (reverse only). *As struck*. (8)

\$15,000

The original dies were sold to Thomas Stokes in 1857. These in turn were donated to the National Gallery of Victoria in 1933, they were then transferred to the Science Museum of Victoria in 1976. Soon after its establishment the Royal Australian Mint produced these copper gilt restrikes from the original deteriorated 'Kangaroo Office' dies (which were loaned to them from the National Gallery of Victoria in 1970) for presentation to the Carnegie Museum of Natural History in Pittsburgh, U.S.A. This set was acquired through Ray Jewell when the the Carnegie Museum decided to dispose of its numismatic collection. The original obverse die of the half ounce is still in the possession of Stokes (Australasia) Ltd.

Ex Spink Auctions (Australia) Sale 9 (lot 1233); Noble Numismatics Sale 87A (lot 391) and Bentleigh Collection.

Kangaroo Office Medal Rarity Ex Fred Baldwin



1432*

Port Phillip, Kangaroo Office, Melbourne, medal in white metal (38mm) by W.J.Taylor (C.V/2, A.784a). *Some brilliance, extremely fine and extremely rare.*

\$5,000

Ex Spink Australia Sale 3 (lot 102A) and Sale 32 (lot 1175); Noble Numismatics Sale 46 (lot 1510) and 87A (lot 389) and Bentleigh Collection.

**Unique Presentation First Issue Melbourne Mint
Sovereign**



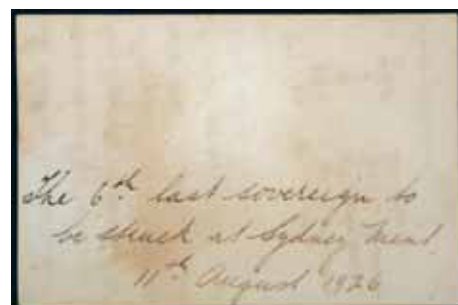
1433*

Queen Victoria, Melbourne Mint presentation proof-like specimen sovereign, 1872. *Minute obverse rim bruise at 11.30 o'clock, otherwise nearly FDC and excessively rare if not unique, of considerable historical interest.*

\$35,000

A contemporary letter states in full 'For Flora. One of the first thirty sovereigns struck off at the Victorian Mint by the Governor of the Colony in 1872. From Her Father P.Normanby'. The Melbourne Mint was opened for business on 12 June 1872 and it was then that the Governor, Sir J.H.T.Manners Sutton, K.C.M.G., presided at the striking of the first sovereigns as part of the opening ceremony. The second Marquess of Normanby was Governor of Queensland in 1872.

Ex Spink Australia Sale 17 (lot 1041), Sale 18 (lot 1111) and Noble Numismatics Sale 85 (lot 1214).



lot 1434 part (next pge)

**Finest Known Impeccably Provenanced
1926 Sydney Mint Sovereign Rarity**

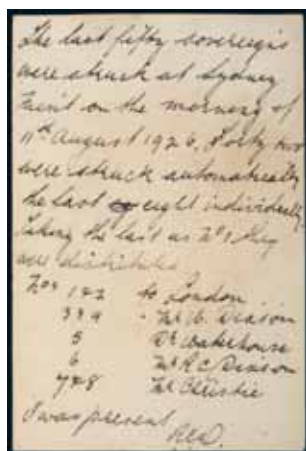


1434*

George V, 1926 Sydney. *Specimen strike, unmarked, with full original mint bloom, gem uncirculated and extremely rare, a possibly unrepeatable opportunity to acquire the finest example of this great rarity.*

\$60,000

Ex Noble Numismatics Sale 84 (lot 1347).



This is the 6th last sovereign to be struck at the Sydney Mint on 11th August 1926. Sold originally in our Sale 84 on behalf of the family of the recipient, Robert Craig Dixon, brother of Sir William Dixon. Of the fifty coins struck that day the last eight were struck individually and distributed as follows taking the last struck as no. 1, 1&2 to London, 3&4 Mr W.Dixon, 5 Dr. Waterhouse, 6 Mr. R.C.Dixon (this coin), 7&8 Mr Christie 'I was present - RCD', sold with R.C.Dixon's handwritten card (illustrated) and a present day letter confirming provenance from Mr. Hugh Dixon, R.C.Dixon's son, on behalf of the Dixon Trust.

Kookaburra Pattern Square Penny



1435*

George V, Melbourne Mint pattern kookaburra square penny, 1921 in cupro-nickel (3.90 grams) by D.Richardson (R.type 11, McD type 12). *Good extremely fine and rare.*

\$30,000

Ex Noble Numismatics Sale 84 (lot 1365).

Perth Mint Wartime Proof Penny Rarity



1436*

George VI, Perth Mint proof penny, 1943. *Toned, nearly FDC and very rare.*

\$12,000

Another Perth Mint Penny Rarity



1437*

George VI, Perth Mint proof penny, 1950. *Light red brown and red toned, nearly FDC and very rare.*

\$15,000

**Royal Mint London
Specimen Royal Visit Florin Rarity**



1438*

Elizabeth II, Royal Mint, London (or Melbourne) specimen florin, 1954 Royal Visit. *Well struck with wire rims, die break through second I of II, nearly FDC and excessively rare.*

\$15,000

Ex Spink (London) Melbourne Sale, March 1999 (lot 344) and believed to be from H.G.Stride of the Royal Mint.

1439

Elizabeth II, Melbourne Mint proof set, 1955. *FDC.* (4)

\$650

Together with registered, wax sealed envelope from Royal Mint, Melbourne dated 23 Feb 1956 addressed to Mr J.A.Tilbrook, Molong, N.S.W. and including original grease proof packets for each coin. Marked on outside of envelope, '1955/Mint/Proof 1d, 3d, 6d, 1/-'.

1440

Elizabeth II, Melbourne Mint proof set, 1955. *Penny toned, otherwise FDC.* (4)

\$500

1441

Elizabeth II, Melbourne Mint proof set, 1956. *Penny with some spotting, nearly FDC - FDC.* (5)

\$750

1442

Elizabeth II, Melbourne Mint proof set, 1956. *Spot on penny, otherwise FDC.* (5)

\$650

1443

Elizabeth II, Melbourne Mint proof silver set, 1956. *FDC.* (4)

\$400

1444

Elizabeth II, Melbourne Mint proof silver set, 1956. *FDC.* (4)

\$400

1445

Elizabeth II, Melbourne Mint proof set, 1958. *Penny with some minor spotting, otherwise nearly FDC - FDC.* (5)

\$650

1446

Elizabeth II, Melbourne Mint proof set, 1958. *Penny nearly FDC.* (5)

\$500

1447

Elizabeth II, Melbourne Mint proof set, 1959. *Halfpenny and penny with some spotting, nearly FDC - FDC.* (6)

\$850

1448

Elizabeth II, Melbourne Mint proof set, 1959. *Bronze dark toned, otherwise FDC.* (6)

\$600

1449

Elizabeth II, Melbourne Mint proof coins, halfpenny, penny, sixpence, shilling and florin, 1959. *Halfpenny and penny dark chocolate tone, extremely fine - FDC.* (5)

\$600

1450

Elizabeth II, Melbourne Mint proof set, 1960. *FDC.* (4)

\$300

1451

Elizabeth II, Melbourne Mint proof set, 1961. *Sixpence dull toned, FDC.* (4)

\$300

1452

Elizabeth II, Melbourne Mint proof set, 1962. *FDC.* (4)

\$250

1453

Elizabeth II, Melbourne Mint proof set, 1963. *With black plastic case of issue, FDC.* (4)

\$200

1454

Elizabeth II, Melbourne Mint proof set, 1963. *With black plastic case of issue, FDC.* (4)

\$200

1455

Elizabeth II, Melbourne Mint proof set, 1963. *With black plastic case of issue, FDC.* (4)

\$250

1456

Elizabeth II, Melbourne Mint proof set, 1963. *FDC.* (4)

\$200

1457

Elizabeth II, Melbourne Mint proof set, 1963; also George VI, crown, 1937. *The set with black plastic case of issue, FDC, the crown very fine.* (5)

\$300

1458

Elizabeth II, Melbourne Mint proof florins, 1956-1963, complete. *FDC.* (8)

\$500

1459

Elizabeth II, Melbourne Mint proof florins, 1956, 1960; proof sixpences 1956, 1957, 1959 (2); proof threepences 1958 and 1959. *FDC.* (8)

\$300

1460

Elizabeth II, Melbourne Mint proof penny 1956, proof shilling 1959 (2), also florin 1956 (2) all in ACGS packets as PF 66 RB, PR 65, MS 63, MS 61. *Uncirculated - FDC.* (4)

\$200

1461

Elizabeth II, Melbourne Mint proof penny, 1958, Perth Mint proof halfpenny, 1962. *Toned, nearly FDC.* (2)

\$200

1462

Elizabeth II, Melbourne Mint proof halfpenny, 1959. *Some spotting, otherwise FDC.*

\$300

1463

Elizabeth II, Melbourne Mint proof shilling, sixpence and threepence 1963, three of each. *FDC.* (9)

\$300



1464*

Elizabeth II, Perth Mint proof penny, 1956. *Toned, some spotting, nearly FDC.*

\$4,000



1465*

Elizabeth II, Perth Mint proof penny, 1957. *Matte finish, FDC.*

\$500

Ex McHugh Collection.



1466*

Elizabeth II, Perth Mint proof penny, 1958. *Full mint red, FDC.*

\$650



1467*

Elizabeth II, Perth Mint proof penny, 1959. *Full mint red, FDC.*

\$600



1468*

Elizabeth II, Perth Mint proof penny, 1959. *Some toning, FDC.*

\$600



1469*

Elizabeth II, Perth Mint proof penny, 1959. *Full mint red, nearly FDC.*

\$600



1470*

Elizabeth II, Perth Mint proof set, 1960. *Slightest toning on halfpenny, otherwise full red, FDC.* (2)

\$600



1471*

Elizabeth II, Perth Mint proof set, 1961. *Full mint red FDC.* (2)

\$650

1472
Elizabeth II, Perth Mint proof set, 1962. *Light toning spots on the halfpenny, nearly FDC.* (2)

\$600



1473*
Elizabeth II, Perth Mint proof set, 1962. *Some tone spots on obverse of halfpenny, otherwise mint red FDC.* (2)

\$600

1474
Elizabeth II, Perth Mint proof set, 1961. *Nearly FDC.* (2)

\$300



1475*
Elizabeth II, Perth Mint proof set, 1963. *Full mint red, FDC.* (2)

\$750



1476*
Elizabeth II, Perth Mint proof set, 1963. *Full mint red, FDC.* (2)

\$750

1477
Elizabeth II, Perth Mint proof penny, 1963. *Red, nearly FDC.*

\$350



1478*
Edward VIII, unofficial pattern crown, 1936, plain edge, in silver by John Pinches. *Toned, uncirculated.*

\$100



1479*
Edward VIII, unofficial pattern crown, 1937, struck in **platinum** (38mm) (34 grams). *A retrospective pattern struck in circa 1998, plain edge proof struck 'en medaille', FDC and believed to be unique.*

\$1,600

Ex Noble Numismatics Sale 76 (lot 1413) and Sale 61 part A (lot 3168).



1480*
Elizabeth II, unofficial pattern swan dollar, 1967, in silver, plain edge proof, by Andor Meszaros for John Pinches. *A few hairline scratches under blue and grey toning, otherwise FDC.*

\$1,200



1481*
Elizabeth II, unofficial pattern swan dollar 1967, milled edge, by Andor Meszaros for John Pinches. *Uncirculated.*
 \$1,250

AUSTRALIAN COMMONWEALTH COINS

CROWNS



1482*
George VI, 1937. *Obverse toned, full original mint bloom, uncirculated.*
 \$80



1483*
George VI, 1938. *Relatively mark free, nearly uncirculated with reflective fields.*
 \$350



1484*
George VI, 1938. *Full mint bloom, some light rubbing but virtually uncirculated.*
 \$300

YEAR SET



part
 1485*
George VI, year set, florin to halfpenny, 1938. *The bronze toned, nearly uncirculated - uncirculated. (6)*
 \$270

FLORINS



1486*
Edward VII, 1910. *Nearly uncirculated.*
 \$1,250



1487*
Edward VII, 1910. *Toned, nearly uncirculated.*
 \$1,250



1488*
Edward VII, 1910. *Lightly toned, nearly uncirculated.*
 \$1,000



1489*
Edward VII, 1910. *Lightly toned, good extremely fine.*
 \$850



1491*
George V, 1912. *Toned, good very fine.*
 \$400

Outstanding First Issue George V Florin



1492*
George V, 1913. *Well struck, toned, surface marking on obverse fields, slightest rubbing, otherwise uncirculated and rare in this condition.*
 \$5,000



1493*
George V, 1913. *Lightly toned, good extremely fine with underlying mint bloom and rare in this condition.*
 \$2,000



1494*
George V, 1914. *Metal flaw below right scroll, uncirculated and rare in this condition.*
 \$2,000

1490*
George V, 1911. *Attractive light gold grey tone, full original mint bloom on the reverse, choice uncirculated and rare, one of the finest known, on par with the Wilson coin, Sale 87B, lot 2060.*
 \$11,750

Practically Mint State 1915 Florin Rarity



1495*
George V, 1915. *Full original mint bloom, minor contact marks, otherwise choice uncirculated and very rare in this condition, one of the finest known.*

\$15,000

In a slab by PCGS as MS62.



1496*
George V, 1916M. *Lightly toned, nearly uncirculated/uncirculated.*

\$700



1497*
George V, 1917M. *Full original mint bloom, peripheral golden tone, choice uncirculated.*

\$1,500



1498*
George V, 1918M. *Minor surface marks in left obverse field, otherwise uncirculated.*

\$1,000



1499*
George V, 1918M. *Nearly uncirculated.*

\$600



1500*
George V, 1919M. *Attractive iridescent tone over full original mint bloom, choice uncirculated and rare in this condition.*

\$5,000



1501*
George V, 1921. *Light hairlines, otherwise nearly uncirculated.*

\$1,200



1502*
George V, 1921. *Well struck, deeply toned with a matte surface, good extremely fine and rare thus.*

\$800



1507*
George V, 1925. *Full original mint bloom, gem uncirculated and rare in this condition, one of the finest known.*

\$4,000



1503*
George V, 1922. *Good very fine.*

\$250



1508*
George V, 1926. *Nearly full original mint bloom, contact marks in obverse fields, otherwise nearly uncirculated/uncirculated and rare in this condition.*

\$1,500



1504*
George V, 1923. *Reverse with die breaks in and around date, nearly uncirculated/uncirculated.*

\$2,000



1509*
George V, 1926. *Nearly full original mint bloom, uncirculated and rare in this condition.*

\$1,500



1505*
George V, 1923. *Subdued full mint bloom, toned on reverse, nearly uncirculated.*

\$1,500



1510*
George V, 1926. *Brilliant, uncirculated.*

\$1,500

In a slab by NGC as MS62.



1506*
George V, 1923. *Toned, good extremely fine.*

\$1,000



1511*
George V, 1927. *Full frosty mint bloom, choice uncirculated.*

\$500



1512*
George V, 1927. *Full original frosty mint bloom on the reverse, nearly uncirculated/uncirculated.*

\$500



1517*
George V, 1932. *Nearly extremely fine/extremely fine and rare in this condition.*

\$2,250



1513*
George V, 1927. *Peripheral toning, uncirculated.*

\$500



1518*
George V, 1932. *Toned, nearly fine.*

\$250



1514*
George V, 1931. *Full original mint bloom, choice uncirculated.*

\$350



1519*
George V, 1933. *Uncirculated and very rare in this condition.*

\$3,000



1515*
George V, 1931. *Full original mint bloom, slight carbon streak trace, otherwise choice uncirculated.*

\$350



1520*
George V, 1934. *Obverse contact mark in left field, well struck specimen-like uncirculated.*

\$500



1516*
George V, 1932. *Well struck, nearly uncirculated/uncirculated and very rare in this condition.*

\$8,000



1521*
George V, 1934-35 Melbourne Centenary. *Well struck wreath, faintest trace of nipple on rider, full original mint bloom, choice uncirculated.*

\$1,000



1522*
George V, 1934-35 Melbourne Centenary. *Well struck wreath with trace of nipple on breast, full original mint bloom, choice uncirculated.*

\$1,000



1523*
George V, 1934-35 Melbourne Centenary. *Wreath struck up, full original mint bloom, choice uncirculated.*

\$1,000



1526*
George V, 1934-35 Melbourne Centenary, together with Foy & Gibson (first type) bag. *The bag fine, the coin with flat wreath on rider's head but full mint bloom, uncirculated. (1+bag)*

\$700



1524*
George V, 1934-35 Melbourne Centenary. *Trace of nipple and well struck up wreath, full original mint bloom, choice uncirculated.*

\$1,000



1527*
George V, 1934-35 Melbourne Centenary. *Full original mint bloom, uncirculated.*

\$600



1525*
George V, 1934-35 Melbourne Centenary. *Well struck wreath, full original mint bloom, obverse hairline left field, otherwise choice uncirculated.*

\$800



1528*
George V, 1935. *Subdued mint bloom, uncirculated.*

\$600



1529*
George V, 1935. *Toned, matte appearance, otherwise uncirculated.*

\$450



1530*
George V, 1936. *Brilliant proof-like uncirculated, with a few minor contact marks taking it away from FDC.*

\$500

Ex Stewart McLeod Collection, Noble Numismatics Sale 75 (lot 1581).



1531*
George VI, 1945. *Choice uncirculated, ex a mint roll.*

\$270

1532
Edward VII - Elizabeth II, 1910-1963, date set, includes 1934-35 Melbourne Centenary. *In a Dansco supreme album, very good - uncirculated.* (55)

\$5,000

Ex Bentleigh Collection.

SHILLINGS



1533*
Edward VII, 1910. *Toned, uncirculated.*

\$350



1534*
Edward VII, 1910. *Uncirculated.*

\$300



1535*
Edward VII, 1910. *Minor contact marks, otherwise uncirculated.*

\$300



1536*
George V, 1911. *Light peripheral tone, uncirculated.*

\$750



1537*
George V, 1911. *Nearly uncirculated.*

\$600



1538*
George V, 1912. *Golden brown tone, subdued original mint bloom, nearly uncirculated and rare in this condition.*

\$2,500



1539*
George V, 1913. *Toned, uncirculated and rare in this condition.*

\$4,500

In a slab by NGC as MS63.



1540*
George V, 1914. *Some mint bloom, good extremely fine.*
 \$300



1545*
George V, 1918M. *Original mint bloom with dirt on obverse at 5 o'clock, otherwise good extremely fine.*
 \$200



1541*
George V, 1915H. *Nearly full original mint bloom, uncirculated and very rare in this condition, one of the finest known.*
 \$12,500

Ex Noble Numismatics Sale 103 (lot 1563).



1546*
George V, 1921 star. *Lightly toned reverse, uncirculated and rare in this condition.*
 \$7,750



1542*
George V, 1915H. *Good extremely fine and rare.*
 \$1,500



1547*
George V, 1921 star. *Toned, uncirculated and rare in this condition.*
 \$2,500
 In a slab by NGC as MS62.



1543*
George V, 1916M. *Full original mint bloom, choice uncirculated.*
 \$800
 Ex Noble Numismatics Sale 92 (lot 1597).



1548*
George V, 1922. *Frictional wear on reverse, lightly toned, nearly uncirculated.*
 \$650



1544*
George V, 1917M. *Well struck, slightly rubbed, nearly uncirculated.*
 \$200



1549*
George V, 1925. *Toned around highlights, choice uncirculated.*
 \$450



1550*
George V, 1925. *Uncirculated.*

\$300



1556*
George V, 1931. *Light golden tone on reverse, choice uncirculated.*

\$500



1551*
George V, 1925. *Uncirculated.*

\$300



1557
George V, 1933. *Lightly toned, good very fine.*

\$450

Ex Bentleigh Collection.



1552*
George V, 1925. *Cleaned, otherwise nearly uncirculated.*

\$300



1558*
George V, 1934. *Specimen-like, choice proof-like uncirculated.*

\$1,500



1553*
George V, 1925. *Well struck, cleaned, otherwise nearly uncirculated.*

\$300



1559*
George V, 1935. *Full original mint bloom, uncirculated.*

\$350



1554*
George V, 1925. *Some toning, subdued mint bloom, nearly uncirculated.*

\$300



1560*
George V, 1935. *Uncirculated.*

\$350



1555*
George V, 1926. *Well struck, attractive toning around highlights, uncirculated.*

\$500



1561*
George V, 1936. *Full original satin-like mint bloom, lightly toned, choice uncirculated.*

\$400

1562

George VI - Elizabeth II, 1938, 1939, 1941, 1942, 1943S, 1944, 1953-1963, extra 1961 (2), 1963 (2). *Nearly uncirculated - uncirculated.* (21)

\$250



1563

George VI - Elizabeth II, 1938-1963, missing only 1940. *In a Supreme album, nearly uncirculated - uncirculated.* (25)

\$400

1570*

Edward VII, 1910. *Full mint bloom and well struck, uncirculated.*

\$250



1564*

George VI, 1939. *Lightly toned, uncirculated.*

\$150

1571*

Edward VII, 1910. *Toned, uncirculated.*

\$200

1565

George VI, 1940. *Nearly uncirculated.*

\$250



1572*

Edward VII, 1910. *Dark toned, uncirculated.*

\$200

1566*

George VI, 1944. *Choice uncirculated.*

\$90



1567

George VI, 1948. *Full original frosty mint bloom, uncirculated.*

\$90

1573*

George V, 1911. *Partly toned, uncirculated.*

\$500

SIXPENCES



1568*

Edward VII, 1910. *Toned, uncirculated.*

\$500

1574*

George V, 1911. *Toned, nearly uncirculated.*

\$400

In a slab by NGC as MS63.



1569*

Edward VII, 1910. *Attractive reverse tone, full original mint bloom, choice uncirculated.*

\$300

1575*

George V, 1912. *Toned, uncirculated and rare in this condition.*

\$2,000

Slabbed by PCGS at MS63.



1576*
George V, 1912. *Subdued mint bloom, flat feathers, otherwise uncirculated and rare.*

\$900



1582*
George V, 1918M. *Some finger toning, otherwise choice uncirculated and rare in this condition.*

\$1,500



1577*
George V, 1914. *Toned, choice uncirculated and rare in this condition.*

\$2,500

In a slab by NGC as MS63.



1583*
George V, 1919M. *Toned, nearly uncirculated.*

\$400



1578*
George V, 1914. *Good extremely fine.*

\$300



1584*
George V, 1920M. *Toned, choice uncirculated and rare thus.*

\$4,000

In a slab by NGC as MS64.



1579*
George V, 1917M. *Full original mint bloom, gem uncirculated and rare, one of the finest known.*

\$4,750



1585*
George V, 1920M. *Well struck, toned, uncirculated.*

\$850



1580*
George V, 1917M. *Subdued full original mint bloom, light golden tone, uncirculated.*

\$900



1586*
George V, 1921. *Some light toning, full original mint bloom, uncirculated.*

\$400



1581*
George V, 1918M. *Brilliant, uncirculated and rare in this condition.*

\$4,500

In a slab by NGC as MS63.



1587*
George V, 1921. *Subdued full original mint bloom, uncirculated.*

\$250

Condition Census 1922 Sixpence



1588*
George V, 1922. Full original frosty mint bloom, well struck for this date, hairline die break from scroll through date, gem uncirculated, very rare in this condition and one of the best three or four known.

\$5,000



1589*
George V, 1922. Obverse well struck up, reverse weakness on the grass and motto, otherwise choice uncirculated and very rare in this condition.

\$3,500



1590*
George V, 1923. Toned reverse, full original mint bloom, choice uncirculated and rare in this condition, one of the finest known.

\$1,200



1591*
George V, 1924. Lightly toned, full mint bloom, uncirculated.

\$900



1592*
George V, 1925. Toned, uncirculated.

\$400



1593*
George V, 1926. Uncirculated.

\$350



1594*
George V, 1927. Full original mint bloom, choice uncirculated.

\$400



1595*
George V, 1928. Full mint bloom, toned, uncirculated.

\$350



1596*
George V, 1934. Golden toned, uncirculated.

\$600



1597*
George V, 1935. Cleaned, nearly uncirculated and rare in this condition.

\$600



1598*
George V, 1936. Full original mint bloom, choice uncirculated.

\$200



1599*
George V, 1936. Uncirculated.

\$150



1606*
Edward VII, 1910. Choice uncirculated.

\$120



1600*
George VI, 1940. Choice uncirculated.

\$100



1607*
Edward VII, 1910. Peripheral tone, uncirculated.

\$100



1601*
George VI, 1943S. Gem uncirculated.

\$100



1608*
Edward VII, 1910. Lightly toned, original mint bloom, uncirculated.

\$70



1602*
George VI, 1952. Mint bloom, nearly uncirculated.

\$200



1609*
George V, 1912. Full original mint bloom, uncirculated/choice uncirculated and one of the finest known.

\$3,500

1603
Elizabeth II, 1953. Nearly uncirculated.

\$170

Slabbed by NGC as MS62.



1610*
George V, 1916M. Full mint bloom/choice uncirculated and rare in this condition.

\$1,900

THREEPENNCES



1604*
Edward VII, 1910. Full original mint bloom, choice uncirculated.

\$150



1611*
George V, 1916M. Subdued mint bloom, tiny tone spots, well struck, uncirculated.

\$700



1605*
Edward VII, 1910. Full original mint bloom, choice uncirculated.

\$150



1612*
George V, 1917M. Choice uncirculated.

\$400



1613*
George V, 1918M. Toned, choice uncirculated.

\$400



1614*
George V, 1918M. Full original mint bloom, choice uncirculated.

\$300



1615*
George V, 1918M. Full mint bloom, uncirculated.

\$250

1620*
George V, 1922/1 overdate. Very good and rare.

\$2,000

Ex H. Carlsson Collection.



1616*
George V, 1921M. Gem uncirculated.

\$350

1621*
George V, 1924. Toned, uncirculated.

\$1,500

In a slab by NGC as MS62.



1617*
George V, 1921M. Depression above date where star was removed from the master die just visible, full mint bloom, uncirculated.

\$150

1622*
George V, 1924. Cleaned and dipped, nearly extremely fine/brilliant nearly uncirculated.

\$350



1618*
George V, 1921. Light grey tone, reverse brilliance, uncirculated and rare.

\$500

1623*
George V, 1925. Obverse hairline in left field, otherwise choice uncirculated.

\$300



1619*
George V, 1921. Nearly uncirculated and rare.

\$500

1624*
George V, 1926. Full original mint bloom, peripheral toning, choice uncirculated.

\$200





1625*
George V, 1928. *Toned, uncirculated.*

\$300



1626*
George V, 1936. *Uncirculated/choice uncirculated.*

\$120



1627*
George VI, 1942. *Light uneven grey toning, minor surface marking on the obverse, otherwise nearly extremely fine/ extremely fine and rare in this condition.*

\$400

1628
George VI, 1942S. *Thin S mint mark, lightly toned, uncirculated.*

\$50

PENNIES



1629*
George V, 1911. *Full original mint red, uncirculated.*

\$600



1630
George V, 1911. *Red and brown, uncirculated.*

\$200



1631*
George V, 1914. *Uncirculated with mint red and very rare in this condition.*

\$3,500

In a slab by NGC as MS63BN.



1632*
George V, 1914. *Traces of red, even brown, good extremely fine and rare thus.*

\$350



1633*
George V, 1916I and 1917I. *Red and brown, nearly uncirculated. (2)*

\$300



1634*
George V, 1917I. *Brown and red, nearly uncirculated.*

\$100



1635*
George V, 1920 dot above bottom scroll, Indian die. *Nearly uncirculated.*
 \$1,000



1640*
George V, 1925 London die. *Plain die state, glossy brown with lighter streak, very fine or better.*
 \$100

1636
George V, 1922 and 1923. *Good extremely fine; nearly extremely fine. (2)*
 \$120



1641*
George V, 1925 London die. *Flaw under O to simulate a Q die state, very fine.*
 \$100



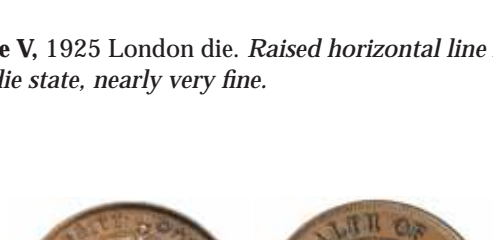
1637*
George V, 1923, London die. *Grey tone with hints of red, well struck, nearly uncirculated and scarce thus.*
 \$600



1642*
George V, 1925 London die. *Raised horizontal line on neck and blobs on E on reverse die state, very fine.*
 \$150



1638*
George V, 1925 London die. *Flaw below O to simulate a Q die state, nearly uncirculated and very rare in this condition.*
 \$5,000



1643
George V, 1925 London die. *Raised horizontal line flaw on neck die state, nearly very fine.*
 \$120

In a slab by NGC as AU58BN.



1639*
George V, 1925 London die. *Plain die state, rim knocks and part of denticles very weak, otherwise good very fine for wear.*
 \$120



1644*
George V, 1925 London die. *Broken N die state, even brown patina, very fine.*
 \$150



1645*
George V, 1925 London die. *Broken N die state, good very fine.*

\$120



1646*
George V, 1926 London die. *Brown and slight red, uncirculated and rare.*

\$750



1647*
George V, 1929 London die. *Brown and red uncirculated and rare in this condition.*

\$600



1649*
George V, 1930 Indian die. *With flaw at 10 o'clock on planchet on obverse, otherwise nearly very fine.*

\$15,000

Ex Bentleigh Collection.



1648*
George V, 1930 Indian die. *Even brown patina, nearly very fine.*

\$16,000

Ex Bentleigh Collection.



1650*
George V, 1930 Indian die. *Six pearls and full band, good fine/nearly very fine with even brown patina, rare.*

\$15,000



1651*
George V, 1930 Indian die. *Minor surface marks and rim bruise, even brown patina, six pearls, fine/good fine and rare.*

\$15,000

1652
George V, 1933 and 1934. *Nearly uncirculated. (2)*

\$170



1653*
George V, 1934. *Mint red, uncirculated.*

\$300

Ex Noble Numismatics Sale 64 (lot 2143) and Bentleigh Collection.

1654
George V, 1934 and 1936. *Brown with some original mint red, nearly uncirculated. (2)*

\$150

1655
George VI - Elizabeth II, 1938, 1941, 1947, 1948 (3, two full red), 1949, 1950Y., 1951PL, 1952 (2), 1956, 1957. *Extremely fine - choice uncirculated. (13)*

\$100



part

1656*
George VI, 1939 and 1940 K dot G. *Nearly extremely fine; weakly struck, nearly uncirculated and rare as such. (2)*

\$300



1657*
George VI, 1940 dot KG. *Misplaced stop in KG, toned with traces of red, good extremely fine.*

\$150



part

1658*
George VI, 1942I and 1943I. *Cut on cheek on first, red and brown, uncirculated. (2)*

\$80

1659
George VI - Elizabeth II, 1942Y., 1942I, 1943I, 1950Y., 1951, 1955, 1956, 1956Y., 1958Y., 1959, 1961, 1964. *Good extremely fine - uncirculated. (12)*

\$100



1660*
George VI, 1948 Y dot. *Traces of subdued red, good extremely fine or nearly uncirculated and well struck.*

\$200

1661
George VI - Elizabeth II, 1950, 1950Y., 1951PL, 1952, 1962Y. (2), 1964 (5); two cents, 1968. *The first and third full mint red uncirculated, the rest extremely fine - uncirculated. (12)*

\$100



1664
George V - Elizabeth II, 1911-1964, date set, missing 1930.
In a Dansco Supreme album, very fine - uncirculated. (74)
 \$1,100

Ex Bentleigh Collection.

HALFPENNIES

1662*
George VI, 1951PL. Full original mint red, uncirculated.
 \$150



1665*
George V, 1911. Full original mint red, uncirculated.
 \$300



1666*
George V, 1911. Red and brown, uncirculated.
 \$200



1667*
George V, 1913. Streaky toning, lightly rubbed, otherwise good extremely fine.
 \$120



High Grade Nearly Full Mint Red 1915H



1663*
George V - Elizabeth II, 1911-1964, date set, missing 1930,
 in Supreme album, a well above average set with a list of
 owner's grading, includes 1931 dropped 1 in place of 1930.
 Mostly brown, later coins 1936 on with some to full red, the
 1920 plain very fine, others extremely fine. (75)
 \$3,000

1668*
George V, 1915H. Obverse stain, otherwise full original
 mint red, slightly browned, uncirculated and very rare as
 such for this date.
 \$5,000



1669*
George V, 1915H. *Brown and red, nearly uncirculated and rare.*

\$3,250



1673*
George V, 1923. *Even brown patina, peripheral die breaks both sides, very fine and rare thus.*

\$1,500



1674
George V, 1931, 1932. *Extremely fine - nearly uncirculated.*
 (2)

\$200

Ex Bentleigh Collection.



1675
Elizabeth II, 1953. *Choice uncirculated.*

\$50

1670*
George V, 1916I and 1919. *Brown and red, nearly uncirculated.* (2)

\$200



part

1676*
George V - Elizabeth II, 1911-1964, date set. *In a Dansco Supreme album, very fine - uncirculated.* (59)

\$2,000

Ex Bentleigh Collection.



1671*
George V, 1923. *Peripheral die breaks on obverse and reverse, even brown patina, centre diamond, eight pearls, nearly extremely fine and rare in this condition.*

\$3,500

Ex Bentleigh Collection.



1672*
George V, 1923. *Brown patina, nearly very fine/very fine.*

\$2,000