
Second Session, Commencing at 11.30 am

AUSTRALIAN COMMONWEALTH COINS

CROWNS

350	George VI, 1937. Uncirculated.	\$70
351	George VI, 1937. Good very fine - nearly uncirculated. (4)	\$150
352	George VI, 1937. Good very fine - extremely fine. (5)	\$170
353	George VI, 1937. Very fine - good very fine. (20)	\$600
354	George VI, 1937. Very fine - good very fine. (20)	\$600
355	George VI, 1937. Very fine - good very fine. (20)	\$600
356	George VI, 1937. Good fine - very fine. (20)	\$600
357	George VI, 1937. Very good - very fine. (20)	\$570
358	George VI, 1937 and 1938. Good extremely fine; extremely fine. (2)	\$200
Ex M.Ward Collection.		
359	George VI, 1937 and 1938. Extremely fine; nearly extremely fine. (2)	\$150
360	George VI, 1937 and 1938. Extremely fine; toned very fine. (2)	\$120
361	George VI, 1937 and 1938. Extremely fine; good very fine. (2)	\$120
362	George VI, 1938. Nearly extremely fine.	\$120

363	George VI, 1938. Toned, good very fine.	\$100
-----	--	-------

364	George VI, 1938. Very fine.	\$100
-----	------------------------------------	-------

365	George VI, 1938. Good very fine. (2)	\$180
-----	---	-------

FLORINS



366*	Edward VII, 1910. Nearly extremely fine.	\$600
------	---	-------

367	Edward VII, 1910. Very fine.	\$270
-----	-------------------------------------	-------

368	Edward VII, 1910. Very fine.	\$270
-----	-------------------------------------	-------

369	Edward VII, 1910. Very fine.	\$270
-----	-------------------------------------	-------



370*	George V, 1911. Spotting on reverse, extremely fine/good extremely fine.	\$1,200
------	---	---------

371	George V, 1911, 1927 Canberra, 1928, 1931 and 1936. The first very good, others nearly extremely fine - good extremely fine. (5)	\$150
-----	---	-------

372	George V, 1911, 1912, 1913, 1914, 1914H, 1915, 1915H, 1916M, 1918M, 1919M, 1921, 1922, 1923, 1924, 1927, 1928, 1933 and 1935. Fair - fine. (18)	\$100
-----	--	-------



373*
George V, 1912. Toned, very fine/good very fine.
\$200



379*
George V, 1916M. Toned, nearly extremely fine/extremely fine.
\$350



374*
George V, 1913. Very fine.
\$250

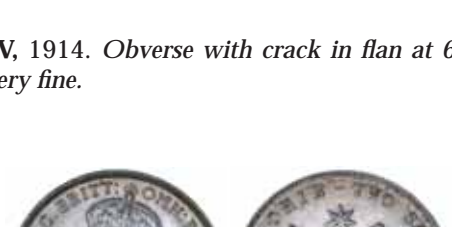
380
George V, 1916M. Cleaned and small dig at edge near NG of shillings, otherwise extremely fine.
\$100



375*
George V, 1913. Nearly very fine.
\$100



381*
George V, 1917M. Extremely fine/nearly uncirculated.
\$550



376
George V, 1914. Obverse with crack in flan at 6 o'clock, nearly very fine.
\$100



382*
George V, 1917M. Reverse with two spots, extremely fine/good extremely fine.
\$300



377*
George V, 1915H. Extremely fine/nearly extremely fine.
\$1,000

383
George V, 1917M, 1932 (2). Very good - good very fine.
\$370



378*
George V, 1915H. Very fine.
\$350

384
George V, 1917M, 1922, 1928 and 1936. The last toned, nearly extremely fine, others, very fine to good very fine.
\$150



385*
George V, 1918M. Obverse field with scrape mark in front of King's face, extremely fine/good extremely fine.
\$400



386*
George V, 1919M. Considerable mint bloom, blue peripheral toning, nearly uncirculated and rare in this condition.
\$1,100



393*
George V, 1926. Good extremely fine.
\$750



387*
George V, 1919M. Cleaned, good extremely fine.
\$600



394*
George V, 1926. Toned, good extremely fine.
\$750



388*
George V, 1921. Toned, reverse with edge knock at 1 o'clock, uncirculated.
\$1,650



395*
George V, 1926. Extremely fine/good extremely fine.
\$450

389
George V, 1922. Good very fine.
\$250



390*
George V, 1923. Die break on obverse, good very fine/extremely fine.
\$500



396*
George V, 1926. Good very fine.
\$150

391
George V, 1923. Good very fine.
\$200



392*
George V, 1925. Extremely fine.
\$350



397*
George V, 1927. Extremely fine.
\$250

398
George V, 1927. Nearly extremely fine.
\$200

399
George V, 1927. Nearly extremely fine.

\$170

400
George V, 1927 Canberra. Attractive blue and olive toning, nearly extremely fine.

\$70

401
George V, 1927 Canberra, set into a timber outline map of Australia display stand. Coin dark toned, very fine.

\$50

402
George V, 1927 Canberra. Toned, good extremely fine. (3)

\$50

403
George V - Elizabeth II, commemoratives, 1927 Canberra, 1934-35 Melbourne Centenary, 1951 Jubilee, 1954 Royal Visit. Second toned, others uncirculated. (4)

\$350



404*
George V, 1928. Good extremely fine.

\$300

405
George V, 1928 and 1931. Nearly extremely fine; good extremely fine. (2)

\$300

Ex M.Ward Collection.

406
George V, 1931. Nearly extremely fine/extremely fine.

\$150



407*
George V, 1932. Very fine.

\$800

408
George V, 1932. Nearly very fine.

\$300

409
George V, 1932. Nearly very fine.

\$300



410*
George V, 1932. Fine.

\$250

411
George V, 1932. Fine.

\$200

412
George V, 1932. Fine.

\$200

413
George V, 1932. Nearly fine/fine.

\$200

414
George V, 1932. Very good.

\$150

415
George V, 1932. Very good.

\$150

416
George V, 1932. Good/nearly fine. (2)

\$300

417
George V, 1933. Good very fine.

\$300



418*
George V, 1933. Very fine.

\$350

419
George V, 1934. Cleaned, otherwise good extremely fine.

\$370



420*
George V, 1934. Obverse toned, extremely fine/good extremely fine.

\$350

421

George V, 1934. *Good very fine/nearly extremely fine.*
\$200



422*

George V, 1934-35 Melbourne Centenary. *Near full wreath on rider's head, nearly uncirculated.*
\$400

423

George V, 1934-35 Melbourne Centenary with Foy & Gibson Pty Ltd envelope of issue (good). *Toned, good extremely fine.*
\$400

424

George V, 1934-35 Melbourne Centenary. *Extremely fine.*
\$340

425

George V, 1934-35 Melbourne Centenary. *Unmarked, good extremely fine.*
\$300

Ex M.Ward Collection.



426*

George V, 1934-35 Melbourne Centenary. *Good extremely fine.*
\$300

427

George V, 1934-35 Melbourne Centenary. *Good extremely fine/extremely fine.*
\$300



428*

George V, 1934-35 Melbourne Centenary. *Toned, extremely fine.*
\$300



429*

George V, 1934-35 Melbourne Centenary. *Reverse with flaw in planchet, otherwise extremely fine.*
\$300

430

George V, 1934-35 Melbourne Centenary. *Nearly extremely fine.*
\$300

431

George V, 1934-35 Melbourne Centenary. *Extremely fine/good very fine.*
\$300

432

George V, 1934-35 Melbourne Centenary. *Very fine.*
\$250



433*

George V, 1935. *Good extremely fine.*
\$350

434

George V, 1935. *Extremely fine.*
\$300



435*

George V, 1935. *Extremely fine.*
\$200

436

George V, 1935 and 1936. *Extremely fine; good extremely fine. (2)*
\$150

Ex M.Ward Collection.

437

George V, 1936. *Dark patchy tone, well struck, minor surface marks, uncirculated.*
\$300

In a slab by PCGS as MS64.

438
George V, 1936. Nearly uncirculated.
 \$100

439
George V, 1936. Extremely fine/good extremely fine.
 \$100

440
George VI, 1938. Minor obverse contact marks, uncirculated/choice uncirculated.
 \$150

In a slab by PCGS as MS63.



441*
George VI, 1939. Light grey brown tone, good extremely fine/nearly uncirculated and scarce.
 \$750

In a slab by PCGS as AU58.

442
George VI - Elizabeth II, 1941, 1943, 1951 Jubilee, 1954 Royal Visit, 1958-1961. Uncirculated. (8)
 \$100

443
George VI - Elizabeth II, 1942, 1951 Jubilee, 1953, 1954 Royal Visit and 1959. Light toning, uncirculated - choice uncirculated. (5)
 \$120

444
George VI, 1947. Choice full frosty mint bloom uncirculated, ex mint roll. (4)
 \$280

445
Elizabeth II, 1954 Royal Visit (3), 1963 (4). Uncirculated - choice uncirculated. (7)
 \$100



part

446*
Edward VII - George V, 1910-1936, including 1927 and 1934-35 commemoratives. In a Supreme album, a much better than average set, 1917M uncirculated, others good - uncirculated. (28)
 \$3,000

447
George VI - Elizabeth II, 1938-1963, including 1951 and 1954 commemoratives. In a Supreme album, nearly extremely fine - uncirculated. (27)
 \$500

448
Edward VII - George V, 1910 (2), 1912 (2), 1914H, 1915 (2), 1924 (2), 1926, 1933. Good - very fine. (11)
 \$150

449
Edward VII - George V, 1910-1927. Poor - nearly fine. (19)
 \$250

450
Edward VII - George V, 1910-1927. Poor - nearly fine. (19)
 \$250

451
Edward VII - George V, 1910-1927. Poor - nearly fine. (19)
 \$250

452
Edward VII - Elizabeth II, 1910-1963, complete. In Supreme album, fair - uncirculated. (55)
 \$900

453
Edward VII - Elizabeth II, 1910-1963, includes commemoratives and obverses. In press-in album, fair - nearly uncirculated. (59)
 \$800

454
Edward VII - Elizabeth II, 1910-1963, plus crown 1937 and 1938, plus extras (7). All in press-in album, fair - extremely fine. (68)
 \$650

455
Edward VII - Elizabeth II, 1910-1963 date set with extras (5), missing 1915, 1932, 1934-35 Melbourne Centenary, includes 1916M (nearly EF); also crowns, 1937 (2). In press-in coin album, poor - uncirculated. (64)
 \$500

456
Edward VII - Elizabeth II, 1910-1963, date set, complete including commemoratives. In a Supreme album, the 1932 with engraved band to crown, otherwise good fine, others fair - very fine. (55)
 \$600

457
George VI - Elizabeth II, 1938-1963 date set including commemoratives. In press-in album, fine - extremely fine. (27)
 \$150

458
George V, 1927 Canberra. Nearly extremely fine - uncirculated. (36)
 \$500

459
George V - Elizabeth II, 1927 Canberra (2), 1940 - 1963.
Very fine - uncirculated. (27)

\$300



460
George V - Elizabeth II, 1927 Canberra (46), 1951 Jubilee (24), 1954 Royal Visit (20). *Mostly fine - good very fine.* (90)

\$700

469*
George V, 1912. *Nearly extremely fine and rare.*

\$300

461
George V, 1934. *Very fine - nearly extremely fine.* (6)

\$100

470
George V, 1912. *Good fine.*

\$100

462
George V, 1936. *Good very fine - extremely fine.* (6)

\$80



463
George VI, 1940. *Extremely fine - uncirculated.* (20)

\$250

471*
George V, 1913. *Good very fine.*

\$300

464
Elizabeth II, 1954 Royal Visit. *Very good - extremely fine.* (45)

\$130



SHILLINGS



465*
Edward VII, 1910. *Extremely fine.*

\$150

472*
George V, 1914. *Nearly extremely fine/extremely fine.*

\$300

466
Edward VII, 1910, 1915. *Nearly very fine - very fine.* (2)

\$270

473
George V, 1914. *Scratches in obverse field, extremely fine/good extremely fine.*

\$250



467*
George V, 1911. *Extremely fine.*

\$350

474*
George V, 1914. *Extremely fine.*

\$200



468*
George V, 1911. *Nearly extremely fine.*

\$300

475*
George V, 1915. *Nearly extremely fine and rare in this condition.*

\$500

476
George V, 1915. *Partial mint bloom, very fine/good very fine.*

\$400



477*
George V, 1915. *Very fine.*

\$300



478*
George V, 1915H. *Good very fine.*

\$400

479
George V, 1915H. *Nearly very fine.*

\$200

480
George V, 1916M. *Obverse and reverse with some spotting, otherwise good extremely fine.*

\$200

481
George V, 1916M. *Lightly toned, extremely fine.*

\$100



482*
George V, 1917M. *Peripheral golden toning on obverse, dark blue tone on reverse, good extremely fine.*

\$200

483
George V, 1918M. *Nearly uncirculated.*

\$250

484
George V, 1918M. *Nearly extremely fine.*

\$120

485
George V, 1918M. *Original dark toning, good very fine.*

\$50

Slabbed by NGC as AU53.



486*
George V, 1920M. *Some mint bloom, good extremely fine.*

\$500

487
George V, 1920M. *Cleaned and polished, extremely fine.*

\$180



488*
George V, 1921 star. *Grey toned, extremely fine and rare in this condition.*

\$500

Ex M.Ward Collection.



489*
George V, 1921 star. *Cleaned, extremely fine/nearly extremely fine.*

\$500

490
George V, 1921 star. *Good very fine/very fine.*

\$450

491
George V, 1921 star. *Contact marks in fields, very fine/nearly very fine.*

\$200

492
George V, 1921 star. *Very fine/nearly very fine.*

\$200



493*
George V, 1921 star. *Nearly very fine/fine.*

\$200

494
George V, 1922. *Very fine.*

\$100



495*
George V, 1925. *Nearly uncirculated.*

\$350



496*
George V, 1925. Toned, extremely fine/good extremely fine.

\$200

497
George V, 1926, 1927. Fine - very fine. (2)

\$100

498
George V, 1927. Very fine/good very fine.

\$100



499*
George V, 1928. Extremely fine.

\$250

500
George V, 1928. Good very fine.

\$130

501
George V, 1931. Extremely fine.

\$150



502*
George V, 1931. Obverse with uneven tone, extremely fine/nearly extremely fine.

\$120



503*
George V, 1933. Toned, very fine.

\$500

504
George V, 1933. Very fine.

\$350

505
George V, 1933. Dark tone, good fine.

\$120

506
George V, 1933. Fine/good fine.(2)

\$220

507
George V, 1933. One cleaned and obverse with deep scratches, very good - fine. (4)

\$320



508*
George V, 1934. Extremely fine.

\$250

509
George V, 1934. Good very fine.

\$100



510*
George V, 1935. Toned, nearly uncirculated.

\$100

511
George V, 1935. Extremely fine.

\$100

512
George V, 1936. Nearly uncirculated.

\$300



513*
George V, 1936. Nearly uncirculated.

\$200

514
George V, 1936. Extremely fine/nearly extremely fine.

\$100

515
George V, 1936. Cleaned, good extremely fine.

\$50

516
George VI - Elizabeth II, 1938-1963. In a Supreme album, very fine - uncirculated. (26)

\$300

517
George VI, 1939, 1940 and 1943. Nearly extremely fine - good extremely fine.

\$150

518
George VI, 1940. Nearly uncirculated.

\$350

519
George VI - Elizabeth II, 1940, 1941, 1942S - 1963. Nearly very fine - uncirculated. (23)

\$250

520
Elizabeth II, 1953 and 1956, also sixpence 1954. Choice uncirculated. (3)

\$100

In slabs by PCGS as MS64, MS63 and MS66.

521
Elizabeth II, 1959 (3), 1961 (5). Choice uncirculated. (8)

\$100

522
Edward VII - George VI, 1910 (2), 1911 (2), 1914 (4), 1920M, 1921 star (6), 1922, 1924, 1933 (2), 1934, 1943S (2). Mostly good - very fine. (22)

\$150

523
Edward VII - George V, 1910 (2), 1911, 1912, 1913 (2), 1914-1918, 1920 (2), 1921 star, 1922 (2), 1924 (2), 1925, 1926, 1927 (2), 1928 (2). Poor - fine. (25)

\$180

524
Edward VII - George V, 1910 (2), 1911, 1912 (2), 1913-1918, 1920 (2) 1921 star, 1922 (2), 1924 (2), 1925, 1926, 1927 (2), 1928 (2). Poor - fine. (25)

\$180

525
Edward VII - George V, 1910, 1911 (2), 1912 (2), 1913-1918, 1920 (2), 1921 star, 1922 (2), 1924 (2), 1925, 1926, 1927 (2), 1928. Poor - fine. (25)

\$180

526
Edward VII - Elizabeth II, 1910-1914, 1915, 1915H, 1916M-1918M, 1920M, 1921 star, 1922, 1924-1927, 1931, 1934, 1935, 1938, 1939, 1941, 1942, 1942S, 1943, 1943S, 1944, 1946, 1948, 1950 and 1952-1956. Fair - very fine. (36)

\$100

SIXPENCES



527*
Edward VII, 1910. Extremely fine/uncirculated.

\$120



528*
George V, 1911. Good extremely fine.

\$200



529*
George V, 1912. Good very fine.

\$150

530
George V, 1912, 1914 arrow far from 4, 1916M, 1917M, 1918M, 1919M arrow far from 9, 1920M, 1921, 1922 upset at 11 o'clock, 1923, 1924, 1925, 1928 upright 8, 1934 3 and 4 apart, 1935, 1936. Some better than average, very good - very fine. (16)

\$300



531
George V, 1916M. Minor obverse scratches, otherwise extremely fine/extremely fine.

\$200



532*
George V, 1917M. Toned, extremely fine.

\$450

533
George VI, 1940. Nearly uncirculated/uncirculated.

\$70

534
George VI, 1940 and 1941. Nearly uncirculated. (2)

\$100

535
George VI, 1943D. Extremely fine - uncirculated. (64)

\$200

536
George VI, 1944S. Extremely fine - uncirculated. (64)

\$200

537
George VI, 1945. Extremely fine - uncirculated. (64)

\$200

538
Elizabeth II, 1954. Uncirculated. (64)

\$120



539
Elizabeth II, 1962. Uncirculated. (56)

\$100

548*
George V, 1912. Extremely fine.

\$350

540
Elizabeth II, 1963. Uncirculated. (56)

\$100



541
Elizabeth II, 1963. Uncirculated. (64)

\$100



part

549*
George V, 1914. Toned, obverse and reverse with die breaks, extremely fine.

\$500

542*
Edward VII - Elizabeth II, 1910-1963 complete date set. In a Supreme album, well above average, 1918M good very fine, 1919M good extremely fine, 1921 nearly uncirculated, others fine - uncirculated. (48)

\$750



550
George V, 1918M. Extremely fine/good extremely fine.

\$70

543
Edward VII - Elizabeth II, 1910-1963, also threepences, 1910-1964, all in Supreme album. Some early dates better than average both 1910 coins, 1914 sixpence and 1912 threepence good very fine, overall fair - uncirculated. (100)

\$300

551*
George V, 1919M. Nearly uncirculated.

\$250

THREEPENCES



544*
Edward VII, 1910. Toned, uncirculated.

\$100

552
George V, 1920M, 1934, 1935, 1936. Fine - nearly uncirculated. (4)

\$300

545
Edward VII, 1910. Peripheral toning, uncirculated.

\$100

553
George V, 1921M, 1926, 1934. First coin obverse with scratches in field and King's face, extremely fine - good extremely fine. (3)

\$130

546
Edward VII - Elizabeth II, 1910 (2), 1918M, 1919M, 1922, 1936, 1956 (off centre) and 1964 (off centre). Extremely fine - uncirculated, the last two off centre by ten percent. (8)

\$250

554
George V, 1922. Red toning, nearly uncirculated.

\$120



555
George V, 1922. Dark tone, very fine/nearly extremely fine.

\$100

547*
George V, 1911. Extremely fine/nearly uncirculated.

\$350

556
George V, 1923. Very fine/good very fine.

\$150



557*
George V, 1925. Nearly uncirculated/uncirculated.

\$150

558
George V, 1926. Toned, die breaks on obverse, extremely fine/good extremely fine.

\$150



559*
George V, 1927. Uncirculated.

\$200

560
George V, 1928. Nearly extremely fine/extremely fine.

\$100



part

561*
Edward VII - Elizabeth II, 1910-1964 complete date set, 1920m, 1921, 1922, 1924, 1925, 1934-36, all good extremely fine - uncirculated. In a Supreme album, well above average, with 1917 three legged emu (die break) and 1942 nearly extremely fine, very good - uncirculated. (52)

\$1,000

562
Edward VII - Elizabeth II, 1910-1964 date set missing 1922/1 and 1938, includes extra 1915 and 1943 (2); another set, 1910-1964, missing 1914, 1918M, 1954 but includes extra 1920M and 1950. The first in press-in coin album, the second in coin page, good - extremely fine. (114)

\$160

563
George VI - Elizabeth II, 1942S-1962, some average condition such as 1947, 1948 filled 8 (4), 1953 and 1954, most others better quality. Fine - uncirculated. (80)

\$200

564
George VI, 1944S. Uncirculated. (64)

\$100

PENNIES



565*
George V, 1911. Brown and red uncirculated.

\$200

Ex Alan Jordan Collection.



566*
George V, 1914. Lightly struck on obverse, streaky toning brown with red, nearly uncirculated.

\$250

567
George V - Elizabeth II, 1914, 1915, 1915H (2), 1918I (3), 1926 (2), 1933/2 overdates (2), 1948Y., 1964Y. (2, Unc); also halfpenny, 1914H. Very good - uncirculated. (15)

\$60

568
George V, 1919 dot above top scroll and below bottom scroll (2); 1920 Indian die, dot above top scroll and below bottom scroll (2); 1924 Indian die (4). One 1920 with obverse scratches, otherwise very good - fine, all scarce. (8)

\$100



569*
George V, 1920 Indian die with dot above top scroll only. Small edge nick on obverse, very good/fine and very scarce.

\$100

570
George V, 1920 Indian die, dot above top scroll and below bottom scroll. Fine - nearly very fine. (3)

\$150

571
George V, 1920, double dot Indian die (2), dot below London die (3), 1931 Indian die, 1933/2 overdate and 1935. Very good - nearly extremely fine. (8)

\$100

572
George V, 1925. Very fine.

\$120

573
George V, 1925. Plain die state, nearly very fine/very fine.

\$120

In a slab by NGC as XF45BN.

574
George V, 1925. Good fine - nearly extremely fine. (2)

\$250

575
George V, 1925. Nearly very fine - very fine. (3)

\$300

576
George V, 1925. *One coin with scratches on reverse, other coins with some verdigris, good - good fine.* (3)
 \$250

577
George V, 1925. *One cleaned, one with edge nicks, otherwise very good - fine.* (5)
 \$350

578
George V, 1925. *Plain die state and flaw under O to simulate a Q die state, good fine.* (2)
 \$150

579
George V, 1925. *Horizontal raised line on neck die state, good fine.* (2)
 \$180

580
George V, 1925. *Horizontal raised line flaw on neck die state. Nearly very fine - very fine.* (3)
 \$270

581
George V, 1925. *Horizontal raised line on neck die state. Good fine - very fine.* (4)
 \$300

582
George V, 1925. *Flaw under O to simulate a Q die state, nearly very fine; very fine.* (2)
 \$200

583
George V, 1925. *Flaw under O to simulate a Q die state, good fine; nearly very fine.* (2)
 \$200

584
George V, 1925. *Broken N and plain die state, polished, very good; nearly very fine.* (2)
 \$170

585
George V, 1925. *Broken N die state, one scratched on obverse, good fine - nearly very fine.* (3)
 \$200

586
George V, 1925. *Normal or plain die state, fine - good fine.* (3)
 \$200

587
George V, 1926, London die; 1920 plain, Indian die. *Nearly extremely fine; nearly fine.* (2)
 \$80

588
George V, 1927 Indian die. *Verdigris on obverse, otherwise good fine/ very fine and rare.*
 \$60



589*
George V, 1928, London die. *Scratches, otherwise good extremely fine.*
 \$50

Private purchase from M.R.Roberts in 1989.



part
 590*
George V, 1931 (3), dropped 1 (2) Indian die; 1933/2 overdate (10). *Nearly fine - very fine.* (13)
 \$1,200

591
George V, 1933/2 overdate, 1934. *Very good; good extremely fine with original mint red.* (2)
 \$150

592
George V, 1933/2 overdate. *Fine - good fine.* (5)
 \$150

593
George V, 1933/2 overdate. *One fine, the rest mostly very fine.* (7)
 \$180



594*
George V, 1936. *Brown and red, nearly uncirculated.*
 \$70

595
George VI, 1946. *Cleaned, very fine; slight scratches and rim dent, otherwise nearly extremely fine.* (2)
 \$100

596
George VI, 1946. *Nearly very fine.* (2)
 \$100

597
George VI, 1946. *Good fine.*
 \$40

598
George VI, 1946. *Very good - fine.* (5)
 \$180

599
George VI, 1946. *One heavily marked, poor, three cleaned, otherwise fine - very fine, the last with flaw between 9 and 4 and through kangaroo's tail, very fine.* (5)
 \$160

600
George VI, 1946. *Fine - very fine.* (6)
 \$250

601
George VI, 1946. *Fine - very fine.* (6)
 \$250

602
George VI, 1946. *Fine - very fine.* (6)
 \$250

603
George VI, 1946. *Very good - good fine.* (6)
 \$220

604
George VI, 1946. *Very good - fine.* (6)
 \$220

605
George VI, 1946. *Fine - very fine.* (8)
 \$400

606
George VI, 1938-1952, mixed quantities of assorted dates, noted better 1938, 1944Y. (2), 1947Y., 1952 plain. *Several with some mint red, mostly very fine - uncirculated.* (29)
 \$100



part

607*
George V, 1911-1936, date set, missing 1930. *In a Supreme album, most above average, 1912H with brown and red nearly uncirculated, 1916I with some red, others very fine - nearly uncirculated.* (29)
 \$850

608
George VI - Elizabeth II, 1938-1964, full set. *In a Supreme album, well above average, 1946 nearly extremely fine, overall very fine - uncirculated.* (45)
 \$500



part

609*
George V - Elizabeth II, 1911-1964 date set, missing 1930, includes scarce 1920 dot above top scroll and below bottom scroll and 1932 with some mint red (nearly Unc). *In press-in coin album, good - uncirculated.* (80)
 \$400

610
George V - Elizabeth II, 1911-1964, date set, missing 1930 with a spare 1943I, 1953. *In a Dansco press-in album, very good - extremely fine.* (79)
 \$250

611
George V - Elizabeth II, 1911-1964 date set missing 1930, the 1925 is a broken N variety and 1931 is a dropped 1 London die. *In press-in coin album, fine - extremely fine.* (77)
 \$200

612
George V - Elizabeth II, 1911-1964 date set missing 1930. *In a press-in album, a few cleaned, otherwise a well matched set, mostly very good - extremely fine.* (79)
 \$200

613
George V - Elizabeth II, 1911-1964 date set, missing 1930. *In press-in coin album, good - uncirculated.* (79)
 \$200

614
George V - Elizabeth II, 1911-1964, full set, missing 1930, replaced by British issue. *The 1925 nearly very fine, others very good - uncirculated.* (75)
 \$150

615
George VI, 1948. *All with 80-90 percent mint red, nearly uncirculated - uncirculated.* (30)
 \$150

616
George VI, 1949. *Most with 80-95 percent mint red, extremely fine - uncirculated.* (30)
 \$150

617
George VI, 1952 Melbourne. *Full original mint red, uncirculated.* (22)
 \$200

Ex G.C.Heyde Collection and as bought from the Melbourne Mint.

618
Elizabeth II, 1955, 1960Y., 1962Y., 1963Y. (2), 1964 (10), 1964Y. (8). *Selected, mint red uncirculated.* (23)
 \$100

619
Elizabeth II, 1962 (6), 1964 Melbourne (18). *Ex mint rolls, choice uncirculated.* (24)
 \$100

620 Elizabeth II , 1962Y. <i>Ex mint rolls, nearly uncirculated - uncirculated.</i> (500) \$750	634 George V - Elizabeth II , 1911-1964, mixed quantities of assorted dates. <i>Good - very fine.</i> (5kg) \$100
621 George V , 1912H (75), 1918I (156). <i>Good - very fine.</i> (231) \$300	635 George V - Elizabeth II , 1911-1964, mixed quantities of assorted dates. <i>Good - very fine.</i> (5kg) \$100
622 George V , 1914. <i>Good - nearly very fine.</i> (68) \$120	636 George V - Elizabeth II , 1911-1964, mixed quantities of assorted dates. <i>Good - very fine.</i> (5kg) \$100
623 George V - George VI , key dates, 1914 (3), 1915 (5), 1915H (7), 1918I (13), 1926 (16), 1931 (27), 1931 dropped 1 London die (3), 1940 K dot G (11), 1941 K dot G (24), 1947Y. (25), 1948Y. (3). <i>A few cleaned and some with verdigris but overall good - very fine.</i> (137) \$200	637 George V - Elizabeth II , 1911-1964, mixed quantities of assorted dates. <i>Good - very fine.</i> (5kg) \$100
624 George V , 1915. <i>Good - nearly very fine.</i> (102) \$120	638 George V - Elizabeth II , 1911-1964, mixed quantities of assorted dates. <i>Good - very fine.</i> (5kg) \$100
625 George V , 1915H. <i>Good - very fine.</i> (243) \$300	639 George V - Elizabeth II , 1911-1964, mixed quantities of assorted dates. <i>Good - very fine.</i> (5kg) \$100
626 George V , 1920 Indian die, three types, plain, dot above and dot below. <i>Mostly very good - fine.</i> (53) \$150	640 George V - Elizabeth II , 1911-1964, mixed quantities of assorted dates. <i>Good - very fine.</i> (5kg) \$100
627 George V , 1926. <i>Good - very fine.</i> (166) \$100	641 George V - Elizabeth II , 1911-1964, mixed quantities of assorted dates. <i>Good - very fine.</i> (5kg) \$100
628 George V , 1931. <i>Good - very fine.</i> (293) \$400	642 George V - Elizabeth II , 1911-1964, mixed quantities of assorted dates. <i>Good - very fine.</i> (5kg) \$100
629 George VI , 1940 Melbourne. <i>Very fine.</i> (25) \$80	643 George V - Elizabeth II , 1911-1964, mixed quantities of assorted dates. <i>Good - very fine.</i> (5kg) \$100
630 George VI , 1948Y dot. <i>Very fine and rare to obtain in quantity.</i> (25) \$80	644 George V - Elizabeth II , 1911-1964, mixed quantities of assorted dates. <i>Good - very fine.</i> (5kg) \$100
631 George V , 1911 (13), 1912H (11), 1913 (3), 1914 (5), 1916I (29), 1917I (40), 1918I, 1919 English die, curved base (40), flat base (14), 1920 (35), 1921 (90), 1922 English die curved base (93), Indian die curved base (21), 1923 (39), 1924 (21), 1926, 1928, 1929 (4). <i>Good - very fine.</i> (461; 4.49kg) \$100	645 George V - Elizabeth II , 1911-1964, mixed quantities of assorted dates. <i>Good - very fine.</i> (5kg) \$100
632 George V - Elizabeth II , 1911-1964, mixed quantities of assorted dates. <i>Good - very fine.</i> (4.8kg) \$100	646 George V - Elizabeth II , 1911-1964, mixed quantities of assorted dates. <i>Good - very fine.</i> (5kg) \$100
633 George V - Elizabeth II , 1911-1964, mixed quantities of assorted dates. <i>Good - very fine.</i> (5kg) \$100	647 George V - Elizabeth II , 1911-1964, mixed quantities of assorted dates. <i>Good - very fine.</i> (5kg) \$100

648

George V - Elizabeth II, mixed quantities of assorted dates. *Some with verdigris and some damaged, poor - good very fine.* (5kg)

\$50

649

George V - Elizabeth II, 1911-1964, mixed quantities of assorted dates. *Some with light verdigris, otherwise very good - very fine.* (5kg)

\$50

650

George V - Elizabeth II, 1911-1964, mixed quantities of assorted dates but mostly 1942 onwards. *Fine - extremely fine.* (5kg)

\$50

651

George V - Elizabeth II, mixed quantities of assorted dates, mostly post 1936. *Some with verdigris and some damaged, poor - good very fine.* (5kg)

\$50

652

George V - Elizabeth II, 1911-1964, mixed quantities of assorted dates. *Good - very fine.* (5.25kg)

\$100

653

George VI, 1940 (44), 1940 K dot G (10), 1941 (65), 1941 K dot G (37), 1941 missing KG (5), 1941Y. (55), 1942Y. (65), 1941I (86). *Selected from circulation in 1965-66 period, some better than average, fine - very fine.* (367; 3.51kg)

\$150

654

Elizabeth II, 1961Y. (153), 1962 (131), 1963 (144), 1964 (82), 1964Y. (81). *Selected from circulation in 1965-66 period, many better grade coins, mostly very fine - extremely fine.* (591; 5.7kg)

\$100

HALFPENNIES



655*

George V, 1911. *Mostly mint red, toned, reverse with dark tone at 2-3 o'clock, nearly uncirculated.*

\$150



part

656*

George V, 1911, 1913, 1914H and 1930. *The last cleaned, others extremely fine or better with some mint red.* (4)

\$300

657

George V, 1911, 1917I, 1921, 1933. *Very fine - extremely fine.* (4)

\$120

658

George V - George VI, 1914 (3), 1914H (5), 1915H, 1918I (5), 1924, 1930 (7), 1939 kangaroo (2), 1942 (4). *Good - very fine.* (28)

\$110

659

George V, 1916I, 1917I. *First medium brown with mint red, four obverse stain patches, otherwise good extremely fine/nearly uncirculated; second with obverse blue and brown toned, reverse red and brown, nearly uncirculated/uncirculated.* (2)

\$150

660

George V, 1917I, 1921, 1933. *Second coin with die break on obverse, extremely fine - uncirculated.* (3)

\$200



661*

George V, 1923. *Attractive even light brown patina with only trace of die break, nearly very fine/very fine and rare thus.*

\$1,200

Ex Robert Rossini Collection.



662*

George V, 1923. *Diagnostic peripheral die breaks on either side, dull even brown patina, good fine.*

\$1,000



663*
George V, 1923. *Peripheral die breaks either side, even red brown patina, good fine.*

\$1,000



664*
George V, 1923. *Slight peripheral die breaks either side, even brown patina, fine/good fine.*

\$1,000



665*
George V, 1923. *Good fine.*

\$900



666*
George V, 1923. *Obverse with corrosion on 'x', good fine.*

\$850



667*
George V, 1923. *Even brown patina, very good/fine.*

\$800



668*
George V, 1923. *Peripheral die breaks on obverse and reverse, small corrosive spot at 8 o'clock on obverse, otherwise good fine.*

\$750



669*
George V, 1923. *Peripheral die breaks on obverse and reverse, fine.*

\$750

670
George V, 1931. *Blue brown tone with lighter red area on reverse, good extremely fine.*

\$100

671
George V, 1932, 1933 and 1936. *The first with three carbon spots, the second brown and red, both nearly uncirculated, the last red and brown, uncirculated. (3)*

\$130

672
George V, 1935. *Full original mint red, some spotting, otherwise choice uncirculated.*

\$180

673
George VI - Elizabeth II, 1938 (2), 1939 kangaroo reverse, 1947Y., 1948Y., 1950Y., 1951PL (2), 1952, 1953 and 1963. *Very fine - uncirculated. (11)*

\$60



674*
George VI, 1939, kangaroo reverse. *Brown and red, nearly uncirculated.*

\$300

675
George VI, 1939 kangaroo reverse. *Three cleaned, otherwise nearly very fine - good very fine. (7)*

\$120

Ex Robert Rossini Collection.

676
George VI, 1940 (6), 1942I, 1943. *Nearly extremely fine - uncirculated. (8)*

\$150

677
George VI, 1950Y.; also penny 1952; Elizabeth II, 1954 (3). *Uncirculated - choice uncirculated. (5)*

\$50

678
George V, 1911-1936, date set, missing 1923. *In a supreme album, much better than average 1934 and 1935 with original mint red, very good - good extremely fine. (26)*

\$500



part

679*

George VI - Elizabeth II, 1938-1964, full set. *In a Supreme album, well above average, 1939 kangaroo with mint red, good extremely fine, others nearly extremely fine - uncirculated.* (32)

\$500

680

George V - Elizabeth II, 1911-1964, date set in press-in album, 1923 corroded. *Very good - extremely fine.* (63)

\$500

681

George V - Elizabeth II, 1911-1964, date set, missing 1923, with spare 1914H, 1948Y. *In a Dansco press-in album, very good - uncirculated.* (66)

\$100

682

George V - Elizabeth II, 1911-1964, full set, missing 1923 (altered coin in its place). *In press-in album, very good - uncirculated.* (62)

\$70

683

George V - Elizabeth II, 1917I-1964Y., varying numbers of assorted dates, many mint red uncirculated. *A few cleaned, otherwise good very fine - uncirculated.* (58)

\$150

684

George VI, 1951 Perth. *Full original mint red, uncirculated.* (24)

\$120

Ex G.C.Heyde Collection and as bought from the Perth Mint.

685

George VI - Elizabeth II, 1951PL (4), 1960Y. (2), 1962Y. (2). *All with full mint red, some with a few small carbon spots, uncirculated.* (8)

\$100

686

Elizabeth II, 1961 (11), 1962 (4). *Ex mint rolls, choice uncirculated.* (15)

\$70

687

Elizabeth II, 1962Y. *Ex mint rolls, uncirculated.* (200)

\$250

688

George V - Elizabeth II, 1912 (2), 1914 (2), 1916I (6), 1917I (10), 1919 (8), 1920 (1, holed), 1921 (5), 1922 (11), 1926 (7), 1927 (17), 1928, 1929 (7), 1932 (2), 1933 (24), 1934 (12), 1935 (7), 1936 (20), 1938 (36), 1940 (11), 1942 (15), 1943 (28), 1944, 1945 (2), 1946 (18), 1947 (14), 1948 (33), 1949 (12), 1950 (10), 1951 (42), 1952 (15), 1953 (32), 1954 (29), 1955 (12), 1959 (42), 1960 (16), 1961 (40), 1962 (12), 1963 (7), 1964 (31), various mints. *Many later issues with some mint red, very good - good extremely fine.* (621; 3.53kg)

\$70

689

George V - Elizabeth II, 1911-1964, mixed quantities of assorted dates. *Some with verdigris, otherwise very good - extremely fine.* (5kg)

\$50

690

George V - Elizabeth II, 1911-1964, mixed quantities of assorted dates. *Good - good very fine.* (5kg)

\$50

691

George V - Elizabeth II, 1911-1964, mixed quantities of assorted dates. *Good - very fine.* (5.35kg)

\$100

692

George V - Elizabeth II, 1911-1964, mixed quantities of assorted dates. *Good - very fine.* (5.35kg)

\$100

693

George V - Elizabeth II, 1911-1964, mixed quantities of assorted dates. *Good - very fine.* (5.35kg)

\$100

694

George V - Elizabeth II, 1911-1964, mixed quantities of assorted dates. *Good - very fine.* (5.35kg)

\$100

695

George V - Elizabeth II, 1911-1964, mixed quantities of assorted dates. *Good - very fine.* (5.35kg)

\$100

696

George V - Elizabeth II, 1911-1964, mixed quantities of assorted dates. *Good - very fine.* (5.35kg)

\$100

697

George V - Elizabeth II, 1911-1964, mixed quantities of assorted dates. *Good - very fine.* (5.35kg)

\$100

698

George V - Elizabeth II, 1911-1964, mixed quantities of assorted dates. *Good - very fine.* (5.35kg)

\$100

699

George V - Elizabeth II, 1911-1964, mixed quantities of assorted dates. *Good - very fine.* (6kg)

\$100

700

George V, 1914H (64), 1914 (240). *Good - nearly very fine.* (305)

\$300

701

George V, 1924. *Very good - very fine.* (107)

\$200