

PROCLAMATION COINS

1231

**Bolivia**, Ferdinand VII, eight reales 1808 Potosi Mint (KM.84).  
*Good very fine.*

\$100



1232\*

**Brazil**, John V, twelve thousand eight hundred reis or Johanna, 1731M (KM.139). *Good very fine.*

\$4,000

Ex Spink Australia Sale No.31 (lot 1382) and Noble Numismatics Sale 64 (lot 1891).



1232A\*

**Brazil**, Joseph I, 6,400 reis or half Johanna, 1771 R (Rio de Janeiro mint), (KM.172.2, F.69). *Bright, nearly extremely fine and rare.*

\$800



1233\*

**Brazil**, Joseph I, 6,400 reis or half Johanna, 1777 R (Rio de Janeiro mint), (KM.172.2, F.69). *Bright, extremely fine and rare.*

\$900

Ex Noble Numismatics Sale 64 (lot 1893).



1234\*

**Colombia**, Charles III, gold eight escudos, Nuevo Reino mint, 1803/2 NR, (KM.62.1). *Some mint bloom, extremely fine or slightly better and rare in this condition.*

\$2,400



1235\*

**Great Britain**, George III, guinea, third bust, 1768 (S.3727).  
*Good very fine and very scarce.*

\$700



1236\*

**Great Britain**, George III, guinea, fourth bust, 1785 (S.3728).  
*Nearly extremely fine/extremely fine, scarce.*

\$800



1237\*

**Great Britain**, George III, guinea, fifth bust or spade type, 1787 (S.3729). *Nearly extremely fine/extremely fine.*

\$800



1238\*

**Great Britain**, George III, guinea, fifth bust or spade type, 1787 (S.3729). *Nearly extremely fine/extremely fine.*

\$800



1239\*  
**Great Britain**, George III, guinea, fifth bust or spade type, 1788 (S.3729). *Good extremely fine.*

\$900



1245\*  
**Great Britain**, George III, guinea, fifth bust or spade type, 1793 (S.3729). *Good extremely fine.*

\$900

1240  
**Great Britain**, George III, guinea, fifth bust or spade type, 1789 (S.3729). *Good very fine.*

\$500



1246\*  
**Great Britain**, George III, guinea, fifth bust or spade type, 1794 (S.3729). *Extremely fine.*

\$800



1241\*  
**Great Britain**, George III, guinea, fifth bust or spade type, 1790 (S.3729). *Extremely fine.*

\$800



1247\*  
**Great Britain**, George III, guinea, fifth bust or spade type, 1795 (S.3729). *Nearly extremely fine/extremely fine, very scarce.*

\$900



1242\*  
**Great Britain**, George III, guinea, fifth bust or spade type, 1791 (S.3729). *Good very fine/extremely fine.*

\$700



1248\*  
**Great Britain**, George III, guinea, fifth bust or spade type, 1796 (S.3729). *Extremely fine, very scarce.*

\$1,000



1243\*  
**Great Britain**, George III, guinea, fifth bust or spade type, 1791 (S.3729). *Nearly very fine.*

\$450



1249\*  
**Great Britain**, George III, guinea, fifth bust or spade type, 1797 (S.3729). *Good extremely fine.*

\$900



1244\*  
**Great Britain**, George III, guinea, fifth bust or spade type, 1792 (S.3729). *Nearly extremely fine/extremely fine, scarce.*

\$900



1250\*  
**Great Britain**, George III, guinea, fifth bust or spade type, 1798 (S.3729). *Extremely fine.*

\$800



1251\*  
**Great Britain**, George III, guinea, fifth bust or spade type, 1799 (S.3729). *Good extremely fine, rare.*

\$1,000



1252\*  
**Great Britain**, George III, guinea, fifth bust or spade type, 1799 (S.3729). *Good extremely fine, rare.*

\$1,000



1253\*  
**Great Britain**, George III, half guinea, fifth bust or spade type, 1787, (S.3735). *Extremely fine.*

\$750



1254\*  
**Great Britain**, George III, half guinea, fifth bust or spade type, 1796, (S.3735). *Good very fine.*

\$400

1255  
**Great Britain**, George III, shilling, 1787, with semee of hearts (S.3746). *Good very fine.*

\$70

1256  
**Great Britain**, George III, cartwheel twopence, 1797 (S.3776). *Nearly very fine.*

\$100

1257  
**Great Britain**, George III, cartwheel twopences, 1797 (S.3776). *Slight edge bumps but generally very fine.* (4)

\$240

1258  
**Great Britain**, George III, cartwheel twopence, 1797 (S.3776). *Fine.*

\$40

1259  
**Great Britain**, George III, cartwheel twopence, 1797 (S.3776). *Fine.* (2)

\$80



1260\*  
**Great Britain**, George III, cartwheel penny, 1797 (S.3777). *Toned, good extremely fine.*

\$350



1261\*  
**Great Britain**, George III, farthing 1799 (S.3779). *Red and brown uncirculated with extensive obverse die breaks.*

\$150

Ex Jack O'Connor Collection.

1262  
**Great Britain**, George III, farthing, 1799, (S.3779). *Polished and lacquered, otherwise extremely fine or better.*

\$40

Ex J.Smith Collection.



1263\*  
**India**, Bengal Murshidabad, mohur, AH 1202 Year 19 (KM.103). *Good very fine.*

\$450

Ex Spink Australia Sale No.19 (lot 2407) and Noble Numismatics Sale 76 (lot 1901).



1264\*

**India**, East India Company, Madras Presidency, Indian Style Coinage, Hindu System, Gold star pagoda, c.1740-1807, Struck at Madras mint, (3.43 grams), obv. crude half standing figure of a deity, rev. five pointed star within dotted borders, (Pr. 9, KM. 303). *Extremely fine, scarce.*

\$250

Ex Noble Numismatics Sale 63 (lot 1232). The design for this coinage was determined in 1740 and declared the standard pagoda of Madras 9th April 1741. Referred to in the Company's records as the 'Madras current or star pagoda'. This is the coin type that Andrews should have illustrated in his book for Governor King's proclamation of 1800, rather than an 1808 pagoda for Madras that was illustrated.



1268\*

**Mexico**, Charles III, eight reales, 1788 (KM.106.2a). *Weak in centre, otherwise nearly very fine.*

\$100

Ex A.J. Morley Collection.



1265\*

**India**, East India Company, Madras Presidency, gold milled pagoda (c.1808-1814), obv. pagoda, rev. diety standing, (KM.356). *Good extremely fine.*

\$250



1269\*

**Mexico**, Charles III, eight reales, 1800 (KM.109). *Very fine/good very fine.*

\$100

Ex A.J. Morley Collection.



1266\*

**India**, EIC, Madras Presidency, European Style Coinages, Issues, 1808-1815, gold two pagodas, (5.95 grams), obv. Gopuram of a temple with 9 stars each side, around in English, TWO PAGODAS, rev. deity Vishnu standing surrounded by dotted circles, in native text of Tamil and Telugu 'two pagodas', (Pr.146, KM.358). *Good extremely fine and rare.*

\$350

Ex Noble Numismatics Sale 76 (lot 1205).



1270\*

**Netherlands**, Holland, gold ducat, 1760 (KM.12). *Nearly extremely fine.*

\$400

Ex Noble Numismatics Sale 64 (lot 1914).



1267\*

**Mexico**, Charles III, gold eight escudos, 1797 (KM 159). *Attractively toned, nearly extremely fine.*

\$1,400

1271\*

**Netherlands**, Holland gold ducat, 1777 (KM.12). *Slightly buckeled otherwise nearly extremely fine.*

\$200



1275\*

**New South Wales**, fifteen pence or dump, 1813 (cf Mira die E/3) (4.8gms). Appears struck on a cast blank that is underweight by 20%. The crown exactly conforms with Mira die E as do the letter and figure punches. The die sinker (was it Henshall?) has accidentally left out the 'L' in WALES so that it reads WAES. On the reverse the word PENCE is out of alignment possibly as a result of double entering. *Surface dents, edge milling mostly clear otherwise fine, extremely rare and unpublished.*

\$4,000

1272\*

**Peru**, Charles III, gold eight escudos 1788, Lima mint, (KM.82.1a). *Very fine with adjustment marks on the reverse.*

\$1,600

A most significant date for Australia.



Ex. P.J.O'Rourke Collection. This crude example adds weight to the argument that the E/3 and C/4 dumps are contemporary counterfeits rather than crude experimental pieces.



1276\*

**New South Wales**, fifteen pence or dump, 1813 (Mira dies A/1) *Pierced through date, somewhat pitted and polished (from wearing) otherwise all legends and crown clear good fine.*

\$1,500

Ex W.J.D. Mira Collection.



1273\*

**Peru**, Charles IV, eight reales, 1790, Lima (KM.87). *Extremely fine.*

\$200

1277\*

**New South Wales**, fifteen pence or dump, 1813 (Mira dies A/1). *Worn smooth, only the crown visible and the milled edge, toned with obverse scratch otherwise fair/ poor.*

\$500



## AUSTRALIAN GOLD COINS

1274\*

**Portugal**, Maria I, 6400 reis or half Johanna, 1789 (KM.299). *As struck, nearly uncirculated.*

\$1,100

## ADELAIDE ASSAY OFFICE

Ex J. Smith Collection, Noble Numismatics Sale 75 (lot 1375).

## NEW SOUTH WALES DUMPS



1278\*

**Adelaide pound**, 1852, second type with crenellated inner circle on the reverse. *Weak strike at 2 - 3 o'clock on obverse, 9 and 11 o'clock on reverse, small planchet defect at 2 o'clock, otherwise nearly extremely fine.*

\$25,000



Lot 1275



1279\*  
**Adelaide pound**, 1852, second type with crenellated inner circle on reverse. *Softly struck from well used dies, good very fine and rare.*

\$16,000

Sold with envelope stating "with George D Healy's Compliments. 20/5/42".



1280\*  
**Adelaide pound**, 1852, second type with crenellated inner circle on the reverse. *Very fine.*

\$8,000



1281\*  
**Adelaide pound**, 1852, second type with crenellated inner circle on the reverse. *Mount removed at top edge, otherwise nearly very fine and rare.*

\$6,000

**SYDNEY MINT SOVEREIGNS**



1282\*  
**Queen Victoria**, first type, 1855. *Good very fine and rare in this condition.*

\$6,000



1283\*  
**Queen Victoria**, first type, 1855. *Cleaned, otherwise very fine or better.*

\$5,000

Ex Spink Australia Sale 3 (lot 298) and the Moran Collection, Noble Numismatics Sale 63 (lot 1245).



1284\*  
**Queen Victoria**, first type, 1856. *Good very fine and rare in this condition.*

\$5,000



1285\*  
**Queen Victoria**, second type, 1857. *Rim bruises otherwise well struck extremely fine and rare in this condition.*

\$1,000



1286\*  
**Queen Victoria**, second type, 1857. *Good very fine/ nearly extremely fine.*

\$750



1287\*  
**Queen Victoria**, second type, 1858. *Nearly uncirculated and very rare in this condition.*

\$5,000



1288\*  
**Queen Victoria**, second type, 1858. *Extremely fine/ good extremely fine and very rare in this condition.*

\$5,000



1289\*  
**Queen Victoria**, second type, 1859. *Nearly uncirculated.*

\$3,000



1290\*  
**Queen Victoria**, second type, 1859. *Good very fine/ nearly extremely fine.*

\$700



1295\*  
**Queen Victoria**, second type, 1862. *Surface marks, proof-like fields, brilliant uncirculated and very rare in this condition, one of the finest known.*

\$5,000



1291\*  
**Queen Victoria**, second type, 1860. *Good very fine and rare in this condition.*

\$2,500



1296\*  
**Queen Victoria**, second type 1863. *Surface marks, otherwise nearly extremely fine.*

\$1,000



1292\*  
**Queen Victoria**, second type, 1861. *Considerable mint bloom, nearly uncirculated.*

\$2,500

Ex Noble Numismatics Sale 56 (lot 1358).



1297\*  
**Queen Victoria**, second type, 1863. *Nearly extremely fine and rare thus.*

\$900



1293\*  
**Queen Victoria**, second type, 1862. *High wire rim on obverse, uncirculated and very rare in this condition, one of the finest known.*

\$6,000



1298\*  
**Queen Victoria**, second type, 1864. *Some mint bloom, good extremely fine.*

\$2,500



1294\*  
**Queen Victoria**, second type, 1862. *Rim nicks and minor surface marks otherwise proof-like brilliant uncirculated and very rare in this condition, one of the finest known.*

\$5,000



1299\*  
**Queen Victoria**, second type, 1864. *Proof-like mint bloom, nearly uncirculated.*

\$1,600



1300\*

**Queen Victoria**, second type, 1865. *Considerable original mint bloom, nearly uncirculated/ uncirculated and rare in this condition.*

\$2,500



1305\*

**Queen Victoria**, second type, 1866. *Minor rim filing at 7 o'clock with minor hairline scratches there to remove dirt(?) otherwise even light tone good extremely fine.*

\$900



1301\*

**Queen Victoria**, second type, 1865. *Rims filed in places, cleaned, otherwise good extremely fine and rare in this condition.*

\$1,200



1306\*

**Queen Victoria**, second type, 1867. *Extremely fine/ good extremely fine.*

\$1,200

Ex Noble Numismatics Sale 50 (lot 1374).



1302\*

**Queen Victoria**, second type, 1865. *Flat on braids and reverse contact marks near crown otherwise nearly extremely fine/ extremely fine with well struck rims and edge.*

\$1,200



1307\*

**Queen Victoria**, second type, 1867. *Some original mint bloom, nearly extremely fine.*

\$350



1303\*

**Queen Victoria**, second type, 1865. *Good very fine/ nearly extremely fine.*

\$800



1308\*

**Queen Victoria**, second type, 1868. *Full original frosty mint bloom, choice uncirculated and rare in this condition.*

\$3,000



1304\*

**Queen Victoria**, second type, 1866. *Underlying brilliance, good extremely fine.*

\$1,500

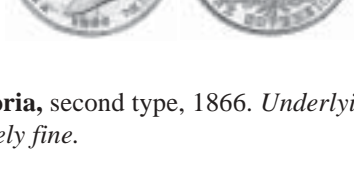


1309\*

**Queen Victoria**, second type, 1868. *Nearly uncirculated.*

\$1,500

Ex Spink Australia Sale 5 (lot 401).



1310\*

**Queen Victoria**, second type, 1868. *Good extremely fine.*

\$1,200



1311\*

**Queen Victoria**, second type, 1868. *Some proof-like mint bloom, peripheral die break on the obverse, good extremely fine.*

\$1,000



1316\*

**Queen Victoria**, second type, 1870. *Subdued frosty mint bloom, good extremely fine.*

\$1,000



1312\*

**Queen Victoria**, second type, 1870. *Almost mark free, lightest friction on high points of obverse otherwise uncirculated/brilliant uncirculated and rare thus.*

\$2,000



1317\*

**Queen Victoria**, second type, 1870. *Some mint bloom, extremely fine/ good extremely fine.*

\$900

Ex Spink Australia sale 6 (lot 1454).

Ex Noble Numismatics Sale 65 (lot 1468).



1313\*

**Queen Victoria**, second type, 1870. *Full original mint bloom, uncirculated.*

\$1,500

#### SYDNEY MINT HALF SOVEREIGNS



1318\*

**Queen Victoria**, first type, 1856. *Very fine.*

\$1,000



1314\*

**Queen Victoria**, second type, 1870. *Some original mint bloom, good extremely fine.*

\$1,200



1319\*

**Queen Victoria**, second type, 1857. *Extremely fine and rare in this condition.*

\$4,000

Ex Spink Australia Sale 5 (lot 419).



1315\*

**Queen Victoria**, second type, 1870. *Subdued mint bloom, nearly mark-free, good extremely fine.*

\$1,000



1320\*

**Queen Victoria**, second type, 1859. *Very fine/good very fine.*

\$600



1321\*  
**Queen Victoria**, second type, 1862. *Very fine.*

\$800



1326\*  
**Queen Victoria**, 1878 Sydney. *Good extremely fine.*

\$300



1322\*  
**Queen Victoria**, second type, 1863. *Good fine and rare.*

\$600



1327\*  
**Queen Victoria**, 1879 Sydney. *Nearly uncirculated.*

\$350

Ex Noble Numismatics Sale 56 (lot 517).

**IMPERIAL SOVEREIGNS - SHIELD REVERSE**



1328\*  
**Queen Victoria**, 1879 Sydney. *Good extremely fine.*

\$500

Ex "Douro" Cargo (lot 1482, illustrated) and Noble Numismatics Sale 56 (lot 1441).



1323\*  
**Queen Victoria**, 1871 Sydney, ww incuse. *Extremely fine.*

\$250



1329\*  
**Queen Victoria**, 1883 Melbourne. *Nearly uncirculated and rare.*

\$1,500



1324\*  
**Queen Victoria**, 1872 Melbourne. *Obverse die cracks, one through 1 of date, good extremely fine.*

\$450



1330\*  
**Queen Victoria**, 1885 Sydney. *Nearly uncirculated.*

\$600



1325\*  
**Queen Victoria**, 1877 Sydney. *Extremely fine.*

\$300



1331\*  
**Queen Victoria**, 1885 Sydney. *Obverse contact marks otherwise nearly uncirculated.*

\$350

Ex A.J. Morley Collection.



1332\*  
**Queen Victoria**, 1886 Melbourne. *Obverse rim nick at 4 o' clock otherwise good extremely fine and very rare in this condition, one of the finest known.*

\$4,000

**IMPERIAL SOVEREIGNS - ST GEORGE REVERSE**

1333  
**Queen Victoria**, 1873 Sydney. *Extremely fine.*

\$220

1334  
**Queen Victoria**, 1874 Melbourne. *Nearly extremely fine.*

\$200



1335\*  
**Queen Victoria**, 1874 Sydney. *Extremely fine.*

\$300



1336\*  
**Queen Victoria**, 1875 Melbourne. *Full frosty mint bloom, uncirculated.*

\$2,000



1337\*  
**Queen Victoria**, 1875 Melbourne. *Contact marks on obverse otherwise full mint bloom uncirculated.*

\$1,500



1338\*  
**Queen Victoria**, 1876 Melbourne. *Full mint bloom, choice uncirculated and rare thus.*

\$2,000



1339\*  
**Queen Victoria**, 1876 Melbourne. *Full mint bloom, choice uncirculated.*

\$2,000



1340\*  
**Queen Victoria**, 1876 Sydney. *Die flaw at rim where die break bisects 6 of date, subdued mint bloom, uncirculated.*

\$1,500



1341\*  
**Queen Victoria**, 1876 Sydney. *Light scuff mark on cheek, otherwise nearly uncirculated.*

\$1,000



1342\*  
**Queen Victoria**, 1878 Melbourne. *Contact marks, otherwise uncirculated.*

\$1,000



1343\*  
**Queen Victoria**, 1879 Melbourne. *Extremely fine.*

\$250



1344\*  
**Queen Victoria**, 1879 Sydney. *Nearly full mint bloom, nearly uncirculated.*

\$3,000



1345\*  
**Queen Victoria**, 1879 Sydney. *Heavy contact mark on tip of neck and another minor contact mark to left of neck, otherwise nearly uncirculated and rare in this condition.*

\$900



1346\*  
**Queen Victoria**, 1879 Sydney. *Extremely fine/ good extremely fine and very scarce in this condition.*

\$900



1347\*  
**Queen Victoria**, 1881 Melbourne, no BP. *Full original mint bloom, choice uncirculated and rare in this condition.*

\$1,700



1348\*  
**Queen Victoria**, 1881 Melbourne, no BP. *Surface marks on obverse otherwise proof-like nearly uncirculated/ nearly FDC and very rare thus.*

\$1,200

From Michael Marsh by private purchase.

1349  
**Queen Victoria**, 1883 Melbourne. *Good extremely fine.*

\$280



1350\*  
**Queen Victoria**, 1884 Melbourne. *Considerable mint bloom, nearly uncirculated.*

\$500

1351  
**Queen Victoria**, 1884 Sydney. *Extremely fine/ good extremely fine.*

\$200

Ex A.J. Morley Collection.



1352\*  
**Queen Victoria**, 1885 Melbourne. *Nearly uncirculated.*

\$500



1353\*  
**Queen Victoria**, 1885 Melbourne. *Nearly uncirculated.*

\$400

1354\*  
**Queen Victoria**, 1886 Melbourne. *Nearly uncirculated.*

\$600



1355\*  
**Queen Victoria**, Jubilee head, 1887 Sydney. *Contact marks, otherwise good extremely fine and very scarce.*

\$750

1356  
**Queen Victoria**, 1889 Melbourne. *Nearly uncirculated.*

\$150

1357  
**Queen Victoria**, 1892 and 1894 Sydney. *Nearly uncirculated; extremely fine. (2)*

\$250

Ex A.J. Morley Collection.

1358

**Queen Victoria**, 1893 Sydney. *Nearly uncirculated.*

\$150



1359\*

**Queen Victoria**, 1896 Melbourne. *Some mint bloom, brilliant good extremely fine.*

\$160



1360\*

**Queen Victoria**, 1899 Perth. *Extremely fine and scarce thus.*

\$400

1361

**Edward VII**, 1904 (2), 1908, 1910 Melbourne; 1905, 1907, 1908 (2), 1910 Perth; 1910 Sydney. *Mostly uncirculated.* (10)

\$1,200

1362

**Edward VII- George V**, 1908 and 1915 Melbourne. *Uncirculated.* (2)

\$250

Ex A.J. Morley Collection.

1363

**George V**, 1911, 1912, 1915 Sydney. *Nearly uncirculated.* (3)

\$400

1364

**George V**, 1915 Melbourne; 1912, 1915, 1917 Perth. *Nearly uncirculated.* (4)

\$500

1365

**George V**, 1919 and 1924 Melbourne. *Nearly uncirculated.* (2)

\$260

1366

**George V**, 1924 Perth. *Good extremely fine.*

\$240



1367\*

**George V**, 1925 Perth. *Nearly uncirculated.*

\$500



1368\*

**George V**, 1925 Perth. *Good extremely fine and scarce.*

\$500



1369\*

**George V**, 1927 Perth. *Uncirculated and scarce.*

\$400



1370\*

**George V**, 1927 Perth. *Uncirculated and scarce.*

\$400

1371

**George V**, 1927 Perth. *Nearly extremely fine.*

\$300

1372

**George V**, small head, 1930 Perth. *Uncirculated.*

\$150



1373\*

**George V**, small head, 1931 Melbourne. *Extremely fine and scarce.*

\$350

1374

**George V**, small head, 1931 Melbourne. *Contact mark in field in front of king, otherwise extremely fine/ nearly uncirculated.*

\$280

1375

**George V**, small head, 1931 Perth. *Uncirculated.*

\$140