

AUSTRALIAN COMMONWEALTH COINS

THE PATRICK CONNOLLY COLLECTION

FLORINS



974*
Edward VII, 1910. *Nearly uncirculated/uncirculated.*
\$2,500



975*
George V, 1911. *Light golden brown toning, nearly uncirculated and rare in this condition.*
\$3,500



976*
George V, 1912. *Cleaned, slightly porous fields, good extremely fine and rare.*
\$1,500



977*
George V, 1913. *Good very fine and rare in this condition.*
\$1,000



978*
George V, 1914. *Peripheral toning, slight raised rim marks, otherwise good extremely fine.*
\$1,250



979*
George V, 1914H. *Light peripheral tone, good extremely fine and rare in this condition.*
\$4,000



980*
George V, 1915. *Good very fine and rare.*
\$1,250



981*
George V, 1915H. *Full original frosty mint bloom with golden red peripheral tone on reverse, uncirculated and rare in this condition.*
\$5,000



982*
George V, 1916M. *Full satin-like mint bloom, choice uncirculated.*
\$2,000



983*
George V, 1917M. *Attractive golden red peripheral toning, nearly uncirculated.*

\$750



988*
George V, 1923. *Attractively toned, well struck as usual for this date, nearly uncirculated/uncirculated and rare in this condition.*

\$3,500



984*
George V, 1918M. *Attractive toning, nearly extremely fine.*

\$500



989*
George V, 1924. *Has been dipped, otherwise uncirculated.*

\$2,000



985*
George V, 1919M. *Considerable mint bloom, blue peripheral toning, nearly uncirculated and rare in this condition.*

\$2,000



990*
George V, 1925. *Nearly extremely fine.*

\$300



986*
George V, 1921. *Green and iridescent toned, nearly uncirculated, minor edge bruise at 8 o'clock on the reverse, rare in this condition.*

\$1,500



991*
George V, 1926. *Full original pearl or satin-like mint bloom, attractive golden brown toned surfaces, choice uncirculated and rare in this condition, one of the finest known.*

\$4,500

Ex Draper's Hoard, Noble Numismatics Sale 63 (lot 1427).



987*
George V, 1922. *Frosty mint bloom, nearly uncirculated and rare in this condition.*

\$3,000



992*
George V, 1927. *Well struck, full mint bloom, nearly uncirculated.*

\$600



part

993*

George V - Elizabeth II, four commemoratives, 1927 Canberra, 1934-35 Melbourne Centenary, 1951 Jubilee, 1954 Royal Visit. *The first choice uncirculated, second nearly uncirculated, others uncirculated.* (4)

\$500



994*

George V, 1928. *Attractive golden red peripheral tone on full original mint bloom, choice uncirculated and rare in this condition, one of the finest known.*

\$1,500



995*

George V, 1931. *Full original frosty mint bloom with light silver grey tone, choice uncirculated.*

\$500



996*

George V, 1932. *Nearly uncirculated/uncirculated and very rare in this condition.*

\$8,000



997*

George V, 1933. *Good very fine/nearly extremely fine and rare in this state.*

\$400



998*

George V, 1934. *Some brilliance, nearly uncirculated/uncirculated.*

\$750



999*

George V, 1935. *Lightly toned proof-like mint bloom, choice uncirculated and rare in this condition, one of the finest known.*

\$2,500

Ex Draper's Hoard, Noble Numismatics Sale 63.



1000*

George V, 1936. *Lightly toned, uncirculated.*

\$250

1001

George VI - Elizabeth II, 1938, 1940-1954, 1958, 1959, 1960 and 1962. *The 1944 and 1952 good very fine, others nearly uncirculated - uncirculated.* (20)

\$800



1002*
George VI, 1939. *Considerable original mint bloom, nearly uncirculated/uncirculated and rare in this condition.*
 \$1,000

SHILLINGS



1003*
Edward VII, 1910. *Nearly uncirculated.*
 \$350



1004*
George V, 1911. *Lightly toned original mint bloom, extremely fine.*
 \$300



1005*
George V, 1912. *Polished, nearly very fine and rare.*
 \$300



1006*
George V, 1913. *Nearly extremely fine and rare.*
 \$400



1007*
George V, 1914. *Subdued mint bloom, nearly uncirculated.*
 \$600



1008*
George V, 1915. *Good very fine and rare.*
 \$400



1009*
George V, 1915H. *Some underlying mint bloom, light grey toned, good very fine and rare.*
 \$400



1010*
George V, 1916M and 1917M. *Nearly extremely fine; nearly uncirculated. (2)*
 \$250



1011*
George V, 1918M. *Full satin-like mint bloom, uncirculated.*
 \$700



1012*
George V, 1920M. *Cleaned of old deep tone, buffed in left obverse field, extremely fine.*
 \$400



1013*
George V, 1921 star. *Peripheral die breaks lower obverse, light matte grey tone, good extremely fine and very rare in this condition.*
 \$1,500



1019*
George V, 1928. *Hints of red brown peripheral toning, subdued bloom, extremely fine or better and rare in this state.*
 \$350



1014*
George V, 1922. *Die break along base of date, golden red peripheral toning, nearly uncirculated.*
 \$350



1020*
George V, 1931. *Subdued mint bloom, light grey toned uncirculated.*
 \$300



1015*
George V, 1924. *Nearly extremely fine.*
 \$300



1021*
George V, 1933. *Well struck, subdued light grey mint bloom, nearly uncirculated and rare, especially in this condition.*
 \$3,000



1016*
George V, 1925. *Faint long die breaks on the reverse, full frosty mint bloom, uncirculated.*
 \$800



1022*
George V, 1934. *Good very fine.*
 \$200



1017*
George V, 1926. *Dull toned, otherwise extremely fine.*
 \$300



1023*
George V, 1935. *Underlying proof-like mint bloom, has been lightly cleaned or rubbed on obverse fields, otherwise nearly uncirculated.*
 \$400



1018*
George V, 1927. *Struck from rusted obverse die, dull grey toned on reverse, extremely fine.*
 \$250



1024*
George V, 1936. *Nearly full proof-like mint bloom, choice uncirculated.*
 \$600

1025

George VI - Elizabeth II, 1938, 1941-1963, missing 1958, includes extra 1952 and 1953. *Nearly extremely fine - uncirculated.* (25)

\$550



1026*

George VI, 1939. *Full original frosty mint bloom, uncirculated.*

\$300



1027*

George VI, 1940. *Full original mint bloom, choice uncirculated and rare thus.*

\$500



1031*

George V, 1916M. *Nearly uncirculated.*

\$750



1032*

George V, 1917M. *Nearly full mint bloom, uncirculated.*

\$1,200



1033*

George V, 1918M. *Wear on emu, otherwise nearly uncirculated and rare.*

\$1,500

SIXPENCES



1028*

Edward VII, 1910. *Toned, choice uncirculated.*

\$400



part

1029*

George V, 1911 and 1912. *Cleaned, good very fine; nearly extremely fine.* (2)

\$400



1030*

George V, 1914. *Toned, nearly extremely fine.*

\$300



1034*

George V, 1919M. *Choice uncirculated and rare in this condition.*

\$2,000



1035*
George V, 1920M. Full mint bloom, nearly choice uncirculated and rare.

\$1,500



1036*
George V, 1921. Light golden tone, full mint bloom, uncirculated, die break along base of date.

\$350



1037*
George V, 1922. Full frosty mint bloom with light brown tone, uncirculated, with obverse die breaks and slightly concave flan, very rare in this condition.

\$2,000



1038*
George V, 1923. Peripheral die break on reverse through base of date, full mint bloom, choice uncirculated and rare thus.

\$2,000



1039*
George V, 1924. Attractive dark iridescent tone, brilliant fields, choice uncirculated and rare, one of the finest known.

\$2,500



1040*
George V, 1925. Die breaks on the obverse, cleaned, otherwise nearly uncirculated.

\$250



1046*
George V, 1936. Choice uncirculated.

\$350



1041*
George V, 1926. Toned, nearly uncirculated.

\$250



1047*
George VI, 1938. Slight peripheral toning, gem uncirculated.

\$150



1042*
George V, 1926. Hairline behind king's head, dipped, otherwise nearly uncirculated.

\$250



1048*
George VI, 1939. Toned, full original mint bloom, uncirculated.

\$300



1043*
George V, 1927. Toned, has been rubbed, well struck for this, nearly uncirculated.

\$300



1049*
George VI, 1940. Obverse brilliant but surface marked, uncirculated.

\$350



1044*
George V, 1934. Good extremely fine.

\$400

1050
George VI - Elizabeth II, 1941 - 1962, missing 1952, 1953 and 1963, extra 1961, 1962. Very fine - uncirculated. (24)

\$500



1051*
George VI, 1952. Toned reverse, choice uncirculated and rare, one of the finest known.

\$750



1045*
George V, 1935. Subdued full original mint bloom, uncirculated and rare.

\$1,500



1052
Elizabeth II, 1953. Full mint bloom, choice uncirculated and rare thus.

\$500

THREEPENCES



1053
Edward VII, 1910. Well struck, uncirculated.

\$150



1054*
George V, 1911. Full original mint bloom, uncirculated/
choice uncirculated.

\$1,000



1055*
George V, 1912. Toned, nearly uncirculated and rare.

\$750



1061*
George V, 1919M. Toned, choice uncirculated.

\$600



1062*
George V, 1920M. Nearly uncirculated.

\$350



1056*
George V, 1914. Full original mint bloom, light golden
brown tone, uncirculated/choice uncirculated and very rare
in this condition.

\$2,500



1057*
George V, 1915. Good very fine and rare.

\$250



1058*
George V, 1916M. Struck from clashed obverse die, hairlines,
otherwise extremely fine or better.

\$100



1059*
George V, 1917M. Considerable original mint bloom, nearly
uncirculated/uncirculated.

\$500



1060*
George V, 1918M. Attractive golden red full mint bloom,
uncirculated.

\$600



1061*
George V, 1919M. Toned, choice uncirculated.

\$600



1062*
George V, 1920M. Nearly uncirculated.

\$350



1063*
George V, 1921M. Toned, nearly uncirculated.

\$100



1064*
George V, 1921. Thick die break right scroll to rim, toned,
uncirculated and very rare in this condition.

\$800

1065
George V, 1922. Very fine/extremely fine.

\$80



1066*
George V, 1923. *Nearly extremely fine/good extremely fine and rare.*

\$600



1073*
George V, 1935. *Flat strike in centre, otherwise choice uncirculated.*

\$200



1067*
George V, 1924. *Polished, otherwise extremely fine.*

\$200



1074*
George V, 1936. *Uncirculated.*

\$100



1068*
George V, 1925. *Reverse die clashed with die breaks from rim at 6 and 9 o'clock, toned nearly uncirculated.*

\$350

1075
George VI - Elizabeth II, 1938, 1940, 1942D-1944S, 1948-1964 (missing 1963). *Good very fine - choice uncirculated. (26)*

\$350



1069*
George V, 1926. *Carbon spot on obverse rim, attractive mint bloom, uncirculated.*

\$400



1076*
George VI, 1939. *Nearly uncirculated/uncirculated.*

\$150



1070*
George V, 1927. *Attractively toned, full mint bloom, uncirculated.*

\$300



1077*
George VI, 1942. *Good extremely fine/nearly uncirculated and rare.*

\$750



1071*
George V, 1928. *Obverse hairline, otherwise uncirculated and attractively toned.*

\$250



1078*
George VI, 1947. *Choice uncirculated.*

\$100



1072*
George V, 1934. *Full original mint bloom, choice uncirculated.*

\$400

PENNIES



1079*
George V, 1911. *Brown and red/red uncirculated, minor contact marks on lower left obverse.*

\$750



1080*
George V, 1912H. *Subdued mint red, red and brown uncirculated.*

\$1,000



1085*
George V, 1916I. *Considerable red, graffito date in left obverse field '6/5/17', good extremely fine.*

\$150



1081*
George V, 1913. *Full original mint red, choice uncirculated and rare in this condition, one of the finest known.*

\$4,000



1086*
George V, 1917I. *Subdued full original mint red, uncirculated.*

\$1,000



1082*
George V, 1914. *Glossy olive brown and red uncirculated and rare in this condition, one of the finest known.*

\$4,000



1087*
George V, 1918I. *Subdued mottled full original mint red with some toned areas, uncirculated and rare, especially in this condition, one of the finest known.*

\$6,000



1083*
George V, 1915. *Contact marks in left obverse field, brown and red, nearly uncirculated and rare in this condition.*

\$1,500



1088*
George V, 1919. *Full original mint red, minor die breaks and evidence of reverse die clash, choice uncirculated, one of the finest known.*

\$1,500



1084*
George V, 1915H. *Olive brown patina, nearly uncirculated and rare.*

\$1,500



1089*
George V, 1919 dot below scroll. *Subdued full original mint red, uncirculated.*

\$800



1090*
George V, 1920 dot below. *Brown with traces of red, nearly uncirculated.*

\$300



1095*
George V, 1923, London die. *Peripheral die break on obverse, brown and red, uncirculated.*

\$600



1091*
George V, 1920 dot above bottom scroll, Indian die. *Crushed denticles on obverse as always, attractive red and crimson red uncirculated and rare as such.*

\$1,250



1096*
George V, 1924, London die. *Peripheral die break on obverse, brown and red, uncirculated.*

\$500



1092*
George V, 1920 dot above top scroll and below bottom scroll, Indian die. *Brown patina, good very fine and rare, one of the finest known.*

\$1,000



1097*
George V, 1925, London die. *Die state with raised blobs on E and Y, hairline die break on obverse through second G, glossy brown, nearly uncirculated and very rare in this condition.*

\$6,000



1093*
George V, 1921, Indian die. *Attractive glossy brown patina, uncirculated, reverse hairline through 'ONE'.*

\$500



1098*
George V, 1926, London die. *Patchy brown and red patina, good extremely fine and rare.*

\$200



1094*
George V, 1922, London die. *Brown and red patina, nearly uncirculated.*

\$400



1099*
George V, 1927, London die. *Two die breaks from rim on obverse, striation marks through 'BRITT', otherwise red and brown, choice uncirculated.*

\$600



1100*
George V, 1928, London die. *Peripheral die break on obverse, traces of red, nearly uncirculated.*

\$500



1105*
George V, 1934. *Peripheral die break under date, full dark mint red, uncirculated.*

\$200



1101*
George V, 1929, London die. *Cleaned and re-toned, nearly extremely fine/extremely fine.*

\$100



1106*
George V, 1935. *Mostly red, uncirculated.*

\$250



1102*
George V, 1931, London die. *Nearly full original dark mint red, choice uncirculated and rare, especially in this condition, one of the finest known.*

\$3,500



1107*
George V, 1936. *Full original mint red, choice uncirculated.*

\$300



1103*
George V, 1932, London die. *Beautiful full orange red patina, peripheral die break on reverse, choice uncirculated.*

\$400

1108
George VI - Elizabeth II, 1938-1955, 1964, 1964Y., missing 1941 K dot G and 1948Y. *The 1946 cleaned good very fine, 1940 K dot G very clear well struck good very fine, others nearly uncirculated - choice uncirculated. (32)*

\$1,000



1104*
George V, 1933. *Full mint red, fingerprint marks, uncirculated.*

\$200



1109*
George VI, 1941 K dot G. *Full original mint red, uncirculated and rare in this condition, one of the finest known.*

\$750



1110*
George VI, 1948Y dot, Perth. *Brown and red uncirculated and rare.*

\$750

HALFPENNIES



1115*
George V, 1914H. *Dark grey patina, nearly uncirculated.*

\$500



1116*
George V, 1915H. *Red and brown, nearly uncirculated, frictional wear on obverse, rare in this condition.*

\$2,000



1111*
George V, 1911. *Obverse lightly toned, reverse full original mint red, uncirculated.*

\$600



part

1117*
George V, 1916I and 1917I. *The second only fine; the first nearly uncirculated. (2)*

\$250



1112*
George V, 1912H. *Red and brown, nearly uncirculated.*

\$400



1118*
George V, 1918I. *Struck from clashed obverse die, mottled red and grey brown mint bloom, one small cut behind neck otherwise nearly uncirculated and rare in this condition, one of the finest known.*

\$3,500



1113*
George V, 1913. *Glossy brown and rubbed red, good extremely fine.*

\$150



1119*
George V, 1919. *Full mint bloom, uncirculated.*

\$300



1114*
George V, 1914. *Brown toning on reverse, otherwise full red uncirculated and rare.*

\$1,000



part

1120*
George V, 1920, 1921 and 1922. *Nearly extremely fine/ extremely fine; nearly uncirculated; acid cleaned and retoned, good extremely fine.* (3)

\$200



part

1125*
George V, 1930 and 1932. *The first cleaned and re toned, nearly extremely fine; second nearly uncirculated.* (2)

\$300



1121*
George V, 1923. *Diagnostic peripheral die breaks both sides, brown patina, good very fine and rare in this condition.*

\$3,500



1126*
George V, 1931. *Red and brown uncirculated and very rare in this condition, one of the finest known.*

\$1,000



part

1122*
George V, 1924, 1925 and 1927. *Nearly extremely fine; good fine; cleaned extremely fine.* (3)

\$150



1127*
George V, 1933. *Mirror-like, red and brown uncirculated.*

\$250



1123*
George V, 1926 and 1928. *The second with some red, nearly uncirculated.* (2)

\$400



1128*
George V, 1934 and 1936. *Red with some dull toning, uncirculated.* (2)

\$250



1124*
George V, 1929. *Red and brown, uncirculated.*

\$450



1129*
George V, 1935. *Spots, otherwise brilliant full original mint red, choice uncirculated.*

\$500





1130*
George VI, 1938 and 1939. *Uncirculated; choice uncirculated.*
 (2)

\$200



1131*
George VI, 1939 kangaroo reverse. *Brown and red, nearly uncirculated.*

\$750



1132*
George VI, 1940, 1941 and 1942. *First two red uncirculated, last brown and red uncirculated.* (3)

\$450

1133
George VI - Elizabeth II, 1942Y-1959, 1962 and 1964. *Nearly uncirculated - uncirculated.* (23)

\$400

OTHER PROPERTIES

PRE DECIMAL PROOFS 1955-1963



1134*
Elizabeth II, Melbourne Mint proof set, 1955. *FDC.* (4)

\$1,000

Together with Royal Mint Melbourne registered envelope of despatch.

1135
Elizabeth II, Melbourne Mint proof penny, 1955. *Dark lilac toned, good extremely fine.*

\$100



1136*
Elizabeth II, Perth Mint proof penny, 1955. *Nearly FDC and rare.*

\$8,000

1137

Elizabeth II, Melbourne Mint proof set, 1956. *FDC*. (5)
\$1,500

Individually slabbed by PCGS as follows; penny PR63RB; threepence PR66; sixpence PR66; shilling PR64; florin PR66.



1138*
Elizabeth II, Melbourne Mint proof set, 1956. *FDC*. (5)
\$1,250

Ex Royal Mint Melbourne with registered envelope of despatch, marked received 16.2.57. All coins were still sealed in grease proof envelopes until catalogued now for auction.



lot 1139 part



1139*
Elizabeth II, Melbourne Mint proof set, 1956. *FDC*. (5)
\$1,250

Ex Melbourne Mint with the original grease proof paper envelopes, coins just opened now for the first time.

1140
Elizabeth II, Melbourne Mint proof set, 1956. *A short tone line on penny under Australia on reverse and on reverse of florin diagonally through A of Australia, otherwise FDC*. (5)

\$900

1141
Elizabeth II, Melbourne Mint proof set, 1956. *In folder of purchase, the penny with discolouration mark on kangaroo, otherwise FDC*. (5)

\$800



1142*
Elizabeth II, Melbourne Mint proof set, 1956. *Sixpence with slight scuffing on obverse, otherwise nearly FDC*. (5)

\$750

1143

Elizabeth II, Melbourne Mint proof silver set, 1956. *FDC*. (4)

\$1,000

Slabbed by PCGS as, florin and shilling PR66, sixpence and threepence PR65.

1144

Elizabeth II, Melbourne Mint proof silver set, 1956. *Toning, otherwise FDC*. (4)

\$800

1145

Elizabeth II, Melbourne Mint proof florins, 1956, 1959, 1961. *Nearly FDC - FDC*. (3)

\$500



1146*

Elizabeth II, Melbourne Mint proof penny, 1956. *Brilliant full mint red, FDC and rare as such*.

\$1,000

In a slab by PCGS as PR64RD.



1147*

Elizabeth II, Melbourne Mint proof penny, 1956. *Paper tone across top of reverse, otherwise brilliant red and darker red mint bloom, nearly FDC*.

\$500

1148

Elizabeth II, Melbourne Mint proof penny, 1956; proof shillings 1957 and 1959. *The penny lightly toned, otherwise brilliant, FDC*. (3)

\$400



1149*

Elizabeth II, Perth Mint proof penny, 1956. *Toning on highpoints of obverse, old paper tone across top of reverse, otherwise full subdued mint red, nearly FDC and rare*.

\$6,000

Private purchase from Max Stern in 1971 (\$175).



1150*

Elizabeth II, Perth Mint proof penny, 1956. *Purple and red toned, brilliant finish, FDC*.

\$5,000



1151*

Elizabeth II, Perth Mint proof penny, 1956. *Toned on high points, nearly FDC and rare*.

\$3,500



1152*

Elizabeth II, Perth Mint proof penny, 1956. *Some spotting, small planchet flaw between A B in Elizabeth, nearly FDC*.

\$3,000

1153

Elizabeth II, Melbourne Mint proof set, 1957. *FDC*. (4)

\$1,000

Slabbed by PCGS as florin PR65, shilling PR65, sixpence PR66 and threepence PR67.



lot 1154

1154
Elizabeth II, Melbourne Mint proof set, 1957. *FDC.* (4)
 \$750

Ex Melbourne Mint with original grease proof paper packets.

1155
Elizabeth II, Melbourne Mint proof set, 1957. *Small tone spot at 1 o'clock on obverse and reverse edge, otherwise FDC.* (4)
 \$700

1156
Elizabeth II, Melbourne Mint proof silver set, 1957. *Grey toned, dark area on reverse of shilling, otherwise brilliant FDC.* (4)
 \$650

1157
Elizabeth II, Melbourne Mint proof florin, 1957. *FDC.*
 \$250



1158*
Elizabeth II, Perth Mint proof penny, 1957. *Matte and brilliant finish, FDC.*
 \$1,000

Ex Perth Mint, just opened now sold with cellophane packet of issue.



1159*
Elizabeth II, Perth Mint proof penny, 1957. *Matte and brilliant finish, FDC.*
 \$1,000

With Perth Mint cellophane envelope just now opened.



1160*
Elizabeth II, Perth Mint proof penny, 1957. *Matte and brilliant finish, FDC.*
 \$1,000

Ex Perth Mint with a packet of issue.



1161*
Elizabeth II, Perth Mint proof penny, 1957. *Matte and brilliant finish, FDC.*
 \$1,000

Ex Perth Mint with packet.



1162*
Elizabeth II, Perth Mint proof penny, 1957. *Matte and brilliant finish, FDC.*
 \$1,000

In a slab by PCGS as PR65RD.



1163*
Elizabeth II, Perth Mint proof penny, 1957. *Brilliant finish, FDC.*
 \$1,000

1164
Elizabeth II, Perth Mint proof penny, 1957. *Brilliant finish, nearly FDC.*
 \$600

Slabbed by PCGS as PR62RB.

1165
Elizabeth II, Perth Mint proof penny, 1957. *Nearly FDC.*
 \$500



1166*
Elizabeth II, Perth Mint proof penny, 1957. *With some spotting, nearly FDC.*
 \$500

\$500

1167
Elizabeth II, Perth Mint proof penny, 1957. *Matte and brilliant finish, some handling marks, otherwise FDC.*
 \$200

Ex Perth Mint.

1168
Elizabeth II, Perth Mint proof penny, 1957. *Tone spots on obverse and reverse, otherwise FDC.*
 \$200



1169*
Elizabeth II, Melbourne Mint proof set, 1958. *Penny dark toned, otherwise FDC.* (5)
 \$1,500

Ex C. Wolzak Collection.

1170
Elizabeth II, Melbourne Mint proof set, 1958. *FDC.* (5)
 \$1,250

1171
Elizabeth II, Melbourne Mint proof set, 1958. *Penny toned, otherwise FDC.* (5)
 \$900

1172
Elizabeth II, Melbourne Mint proof set, 1958. *Uneven tone on penny, silver grey toned on reverses of florin and shilling, both sides for other two, otherwise brilliant, FDC.* (5)
 \$750

1173
Elizabeth II, Melbourne Mint silver proof set, 1958. *FDC.* (4)
 \$750

1174
Elizabeth II, Melbourne Mint proof shilling and florin, 1958. *FDC.* (2)
 \$300

1175
Elizabeth II, Melbourne Mint proof sixpence, 1958. *FDC.*
 \$100

1176
Elizabeth II, Melbourne Mint proof penny, 1958. *Toned, with some spotting, nearly FDC.*
 \$250

1177
Elizabeth II, Perth Mint proof penny, 1958. *Slight toning, FDC.*
 \$750

Slabbed by PCGS as PR65RD.



1178*
Elizabeth II, Perth Mint proof penny, 1958. *Minor spots, otherwise FDC.*
 \$700

Ex C. Wolzak Collection.



1179*
Elizabeth II, Perth Mint proof penny, 1958. *Some minor spotting, otherwise FDC.*
 \$500

1180
Elizabeth II, Perth Mint proof penny, 1958. *Some minor spotting, otherwise FDC.*
 \$500

1181
Elizabeth II, Melbourne Mint proof set, 1959. *The bronze unevenly toned, nearly FDC, the silver FDC.* (6)
 \$1,750

Slabbed by PCGS as follows, halfpenny and penny PR62RB; threepence PR67; sixpence PR66; shilling PR64; florin PR63.

1182
Elizabeth II, Melbourne Mint proof set, 1959. *The bronze uneven dark toned, silver dull toned, otherwise FDC.* (6)
 \$1,200



1183
Elizabeth II, Melbourne Mint proof florin, 1959. *FDC.*
 \$200

1184
Elizabeth II, Melbourne Mint proof penny, 1959. *Toned, with some spotting, nearly FDC.*
 \$350



1191*
Elizabeth II, Perth Mint proof set, 1960. *Penny with fingerprint, nearly FDC - FDC.* (2)
 \$500

1185*
Elizabeth II, Perth Mint proof penny, 1959. *FDC.*
 \$1,000

In a slab by PCGS as PR66RD.



1192*
Elizabeth II, Perth Mint proof halfpenny, 1960. *Fingerprint toning, otherwise nearly FDC.*
 \$130

1186*
Elizabeth II, Perth Mint proof penny, 1959. *FDC.*
 \$750



1193
Elizabeth II, Melbourne Mint proof set, 1961. *FDC.* (4)
 \$500

1194
Elizabeth II, Melbourne Mint proof florin, 1961. *Nearly FDC.*
 \$150

1195
Elizabeth II, Perth Mint proof set, 1961. *FDC.* (2)
 \$750

1187*
Elizabeth II, Perth Mint proof penny, 1959. *FDC.*
 \$600



1188
Elizabeth II, Perth Mint proof penny, 1959. *FDC.*
 \$600

1189
Elizabeth II, Perth Mint proof set, 1960. *Halfpenny with dark tone, otherwise FDC.* (2)
 \$1,000

Slabbed by PCGS as halfpenny PR63RB, penny PR66RD.



1190
Elizabeth II, Perth Mint proof set, 1960. *Halfpenny toned, otherwise nearly FDC.* (2)
 \$600

1196*
Elizabeth II, Perth Mint proof set, 1961. *Some minor spotting, otherwise FDC.* (2)
 \$750

1197
Elizabeth II, Perth Mint proof set, 1961. *The reverse of the penny spotted, otherwise FDC. (2)*

\$750

Slabbed by PCGS as halfpenny PR65RD, penny PR64RD.

1198
Elizabeth II, Perth Mint, proof set, 1961. *Obverses lightly toned, otherwise FDC. (2)*

\$300



1199*
Elizabeth II, Perth Mint proof penny, 1961. *FDC.*

\$400

In a slab by PCGS as PR64RD.

1200
Elizabeth II, Perth Mint proof set, 1962. *FDC. (2)*

\$850

1201
Elizabeth II, Perth Mint proof penny, 1962. *Some spotting, otherwise nearly FDC.*

\$300

1202
Elizabeth II, Perth Mint proof halfpenny, 1962. *FDC.*

\$200

1203
Elizabeth II, Melbourne Mint proof set, 1963. *With black case of issue, dull bloom, otherwise FDC. (4)*

\$400

1204
Elizabeth II, Melbourne Mint proof set, 1963. *FDC. (4)*

\$400

1205
Elizabeth II, Melbourne Mint proof set, 1963. *With black plastic case of issue, FDC. (4)*

\$400



lot 1206

1206*
Elizabeth II, Perth Mint proof set, 1963. *FDC. (2)*

\$2,000

In slabs by PCGS as penny PR67RD and halfpenny PR66RD.

1207
Elizabeth II, Perth Mint proof set, 1963. *FDC. (2)*

\$1,750

Both in slabs by ANACS as PF67 red and PF68 red.



1208*
Elizabeth II, Perth Mint proof set, 1963. *Slight toning on obverse, otherwise full red, FDC. (2)*

\$800



1209*
Elizabeth II, Perth Mint proof set, 1963. *Some spotting, otherwise nearly FDC. (2)*

\$400

1210
Elizabeth II, Perth Mint proof set, 1963. *Obverses toned, otherwise FDC. (2)*

\$250



1211*
Elizabeth II, Perth Mint proof halfpenny, 1963. *With some spotting, otherwise FDC.*

\$350

MISCELLANEOUS

1212

Australia, Queen Victoria sovereign 1897M, with gold chain and coin frame, in plush case by ABC. *Very fine.*

\$500

1213

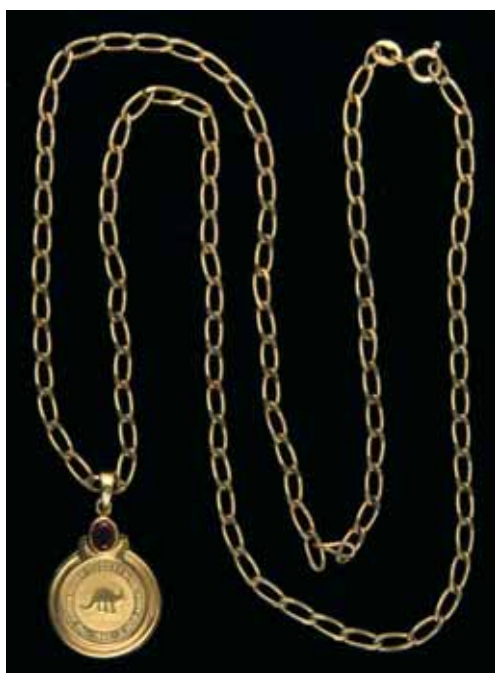
Australia, George V, half sovereign, 1914 Sydney, soldered to a 9ct gold brooch pin neck-tie bar. *Fine.*

\$200

1214

Australia, George V, half sovereign, 1915P. Jeweller's cast copy in 22 carat gold, rim filed in places and planchet break at 11 o'clock on the reverse (4.03gm). *Very fine.*

\$150



1215*

Australian Gold Nugget, one twentieth ounce, 1992 in 9ct gold frame with created ruby at suspender, all on 9ct curb link necklace, combined weight 11.9gm. *Extremely fine.*

\$250

1216

Coin jewellery, silver coins with silver coin frames or scroll suspension, Austria, Maria Theresa taler, 1780X restrrike (KM.T1); Malta, two scudi, 1796 (KM.343); Netherlands, ten gulden, undated (1970) (KM.195); Uruguay, ten pesos, 1961 (KM.43); also fine silver ingot (25gm). *The first coin with graffiti on obverse and reverse, the frame on the Netherlands coin with attractive diamond cut design, fine - very fine.* (5)

\$100

1217

Byzantine scyphate coins, (4) as jeweller's imitations set in surround mounts (10gm), also Austria, four ducats 1915, jeweller's imitation in surround mount (11.3gm). *Extremely fine.* (5)

\$600



1218*

Israel, medal in .900 fine gold (16.17gm) in 18ct gold frame (5.83gm) total weight 22gm, obverse, Theodor Herzl 1860-1960, reverse, emblems of twelve tribes of Israel 14 Mai 1948, issued on 100th anniversary of birth of Father of Zionism. *Sweated surface from wearing, otherwise very fine.*

\$800



1219*

U.S.A., Liberty head gold half eagle, 1902S, with ornate cast and engraved suspension, featuring as the centrepiece crossed flags representing the Republic of China and the U.S.A., total weight 12.6gm. *Obverse scratch and sweating from wear, otherwise very fine and an historical presentation piece.*

\$440

The blue sky with white sun flag design (i.e. central star) was designed in 1895 and shortly after adopted as the KMT party flag and coat of arms of the Republic of China. By 1905 it had been modified so the star section of the flag became the canton, all on a field of red representing the earth. Thus the flag depicted on this coin's suspension is 1895-1905 period. Coincidentally in 1902, the U.S. Asiatic Squadron was upgraded to the U.S. Asiatic Fleet. It maintained a strong presence in China to protect Far East trade interests and also encourage an alliance with the Chinese Republic. It appears that this mounted coin dated 1902 and with the flags of the U.S. and China is probably an item commissioned as a commemorative or presentation piece for the upgrading of the U.S. Asiatic Fleet in 1902.

1220

Sovereign case, in rolled plated gold, by A.L.D Dennison Watch Case Co. inscribed No.12881/13, (21.9 grams). *Polished good very fine.*

\$120

1221

Coin case, chased leaf pattern, c1920 in nickel plate, with five different spring loaded compartments for sovereign, half sovereign, 1/-, 6d, 3d; Australia, mint five dollars, 1988; Australian Bicentenary, 1988, Education medal issued to school children, in cupro nickel; Liverpool District Hospital, enamelled shield (72mm x 67MM) inscribed on reverse, 'Presented to / Dr & Mrs J.Taylor / In Appreciation of Your Support / 1972'; Uruguay, five nuevos pesos, 1976. *The suspension loop on coin case missing, otherwise very fine, the rest extremely fine - uncirculated.* (5)

\$50

1222

Ladies compact and sovereign holder, combination purse, rectangular (89mm x 66mm) silver plated with attached suspension chain, cigarette case appearance, inside hinged mirror and spring loaded holders for sovereign and half sovereign, also hinged arm for securing folded banknotes, on front engraved with initials, 'AANH'. *Some plating worn off lid and small dent on reverse, otherwise very fine.*

\$50

1223

Masonic Lodge pendant, or fob, in gold (15ct, 5.2gm), hand made and engraved, voided centre. *Good very fine.*

\$120

1224

Gold charms, in 9ct (2.5gm) includes Irish harp and a love shoe (Dutch clog with loving couple seated on it and heart impressed at each side); a pair of black onyx gold lined cufflinks and a pair of black onyx studs also gold lined; sterling silver and enamel London coat of arms style charm. *The love shoe with broken suspension loop, very fine - uncirculated. (7 pieces)*

\$50



1225*

Gold necklace, heavy link with attached gold cylinder (40mm) with machine engraved highlights, all in fine gold (tested to at least 22ct, 62.8gm; chain 29 inches). *Extremely fine.*

\$2,000



1226*

Gold rope necklace, in fine gold (tested to at least 22ct, 33.6gm; 29 inches). *Extremely fine.*

\$1,100

1227

Gold curb necklace, in fine gold (tested to at least 22ct, 11.3gm; 29 inches). *Extremely fine.*

\$370

1228

Gold necklaces, in 22ct (3.7gm, 52mm; 3.4gm, 42mm) (2); also oval pendant in 18ct (1.8gm, 13.5mm x 7.5mm). *Good very fine - extremely fine. (3)*

\$300



1229*

Gold bracelet, heavy link (6 inches) with attached heart with highlights for effect, all in fine gold (tested to at least 22ct, 20.5gm). *Extremely fine.*

\$650



1230*

Gold ladies bracelet, flexible double band in 18ct (17.6gm). *Extremely fine.*

\$500

1231

Gold bracelet, hollow core in 9ct rose gold (12gm), together with another but gold filled. *The last with several dents, the first good very fine. (2)*

\$160

1232

Gold bangle, in fine gold (tested to at least 22ct, 13.2gm) with machine engraved highlights. *Extremely fine.*

\$430

1233

Gold jewellery, chains (7), bracelet, chain catches (4), various carats, approximate total fine gold 34.5gm. *Very fine - extremely fine. (12)*

\$1,100

1234

Costume jewellery, mostly brooches, also three necklaces, one pair of cufflinks and a 9ct gold chain (approx 3gm) broken. *A few pieces broken, otherwise very fine. (20)*

\$50

1235

Chinese jewellery, text character pendants and jade bracelet all in gold (14ct, approx 14gm). *Very fine. (5)*

\$300

1236

Gold jewellery, mostly damaged, 9ct (10.7gm), 14ct (8.7gm), 15ct (1.4gm), also damaged watch and Seiko gilt stainless steel wristwatch and band, one greenstone bead necklace, another silver necklace with base metal clasp and a Tiffany sterling silver keychain (27.7gm). *Poor - very fine.* (12)

\$400

1237

Cufflinks, set in 9ct gold (5.9gm) by Rodd, shield shape with incuse star design in centre, this inset with brilliant diamond-like stone. *Very fine.*

\$100

1238

Gold watch band, in 9ct gold (39.2gm) gent's tapering, non expanding type with textured pattern surface. *Small break at clip mechanism needs soldering, otherwise extremely fine.*

\$550



1239*

Gent's 18ct gold hunter pocket watch, by John Bennett, key wind (key included), machine turned case (50mm; 105gm total weight), c1875, white dial with black Roman numerals, seconds dial with black Arabic numerals, works cover elaborately engraved, 'Maker to the Royal Observatory / coat-of-arms / John Bennett / 65 & 64 Cheapside / London', together with an 18ct gold Albert (16 inches; 45gm) and a gold sovereign, 1908S with fitted scroll suspender. *One fob clip of a different pattern and loose, watch in working order, some slight discolouration around seconds dial, the sovereign sweated from wear, otherwise watch and chain extremely fine.* (3 pieces + key)

\$2,900

Together with valuation certificate dated 26 April 1988 for \$6,250.

1240

Gents 18ct gold hunter pocket watch, top wind, c1910, by Waltham, not in working order, missing glass, plain gold case (49mm), case weight approximately 40gm. *Fair.*

\$1,000

1241

Gent's 9ct gold hunter pocket watch, unnamed dial, plain case (50mm; 85gm total weight), c1936, white dial with black Roman numerals, seconds and day dials with black Arabic numerals, also a stop watch feature, case number 194544, work's cover engraved, 'A.H.C. / Xmas 1936'. *In working order, dig in dial surface at 5 o'clock, otherwise good very fine.*

\$350



1242*

Ladies 18ct gold hunter pocket watch, by Elgin, case number 441578 and movement number 2235168, chased floral and bird pattern with raised leaf spray on back, engraved monogram initials 'AH' on lid, white dial, black Roman numerals, seconds dial with black Arabic numerals, black hands (40mm; 59.8gm total weight) together with 9ct yellow gold anchor chain (23 inches; 9.4gm). *Watch not working, otherwise extremely fine.* (2 pieces)

\$700

Together with valuation certificate dated 17 April 1991 for \$1,165.



1243*

Ladies 14ct gold hunter pocket watch, plain case with monogram initials 'MS' in relief on lid, key wind (key included), case number 33384 (32mm; 25.5gm total weight), white dial with black Roman numerals, black hands, work's cover engraved, 'Cylindre / 8 / Pierres / Aigiulles No 33384 / C.Vernez'. *In working order, good very fine.*

\$350

1244

Ladies 14ct gold hunter pocket watch, by Boutte, chased case in floral design (34mm; 30.6gm total weight), white dial with black Roman numerals, seconds dial with Arabic numerals, gold hands, case number 261819, work's cover with logo and details, 'Ancre De Precision / Geneve 1896 / Lev es Visibles / 15 Rubies / Chaton'. *In working order, dial glass toned and with hairline scuffing, otherwise good very fine.*

\$300



1245*

Gent's wristwatch, Omega Seamaster, 'Anakin Skywalker', 1971 chronograph, one of the two watches in the durable metal collection, tonneau shaped tungsten coated stainless steel diver's watch, suspended movement for maximum shock protection, wind-up movement, multi dialed and tachymetre, expanding stainless steel band, not original. *In working order; very fine and rare model.*

\$500

With research.



1246*

Ladies 18ct white gold wrist watch, Eterna Diamond Set with 33 x 2pt diamonds (38.9gm), cased. *Nearly extremely fine.*

\$1,000

1247

Omega, stop watch, nickel case (64mm), white dial with Arabic numerals, black hands and red stop watch hand, Swiss made, together with fob chain (17 inches), hallmarked, all in leather storage case for wearing on belt. *Watch face damaged, not in working order, otherwise very fine. (2 pieces + case)*

\$50



1248*

Diamond ring, solitaire, round brilliant cut, Argyle cognac colour of 1.15ct, with upswept shoulders in six claw coronet setting, 18ct white gold band (5.2gm). *Very fine.*

\$2,000



1249*

Diamond ring, solitaire, round old style brilliant cut of 0.80ct, with upswept cross over swirl design, six claw coronet setting, platinum band (6.7gm). *Very fine.*

\$2,000



1250*

Diamond ring, solitaire, round brilliant cut of 0.45ct, with upswept cross over design, four claw setting, platinum band (4.85gm). *Very fine.*

\$1,500

1251

Diamond ring, solitaire, round brilliant cut of 0.27ct, fluted shoulders and bezel, four claw coronet setting, platinum band (4.75gm). *Very fine.*

\$1,000

1252

Diamond ring, solitaire, round brilliant cut of 0.25ct, bevelled edges, six claw coronet setting, platinum band (4.3gm). *Very fine.*

\$1,000



1253*

Gent's ring, in 18ct gold (8.9gm), flat top, rhodium plated with incuse star pattern inset with quarter carat (.25) round brilliant diamond. *Very fine.*

\$350



1254*

Black Mourning Ribbon, with 9ct gold buckle and attachments, total weight 15.8gm. *Extremely fine.*

\$150

1255

Gemstones, a large quantity of small, loose jewellery cut created rubies, emeralds and sapphires, as well as a single rectangular cut (4mm x 2mm) created emerald. *Uncirculated.* (lot)

\$50

1256

Vintage razor, 'Valet' autostop safety razor, model 99, made in England, in bakelite case and original packing box. *Extremely fine.*

\$30

1257

Collectables, small mug for (proposed) Coronation of King Edward VIII May 12th 1937, made in England; large mug for Coronation of King George VI and Queen Elizabeth 12th May 1937 and Independent Order of Rechabites Juvenile Centenary 1937, Blackburn District No.71, by Grafton China; small yellow milk jug c1940s, by Bakewells, Sydney. *The second with hairline crack, otherwise very fine.* (3)

\$50

1258

Edward VIII, memorabilia, three cups, two sandwich trays, a print of Edward VIII, paper back 'Wallis' 1968; also replica Confederate States five hundred dollars Feb 17, 1864. *A cup and tray broken otherwise fine - extremely fine.* (8)

\$100

1259

Sydney Harbour Bridge, commemorative glass sweets' dish, harbour scenes on plate with bridge spanning over as handle, around centre marked, 'Sydney Harbour Bridge Opened March 19th 1932'. *Extremely fine.*

\$50

1260

Collectable programs, theatre, opera, symphony orchestras, also other souvenir programs and a print of King George VI in uniform of Admiral of the Fleet, from c1946 - c1954. *Fine - very fine.* (100s)

\$50

1261

Banknote albums, high quality, complete with pages for holding two and three notes, card partitions between pages, slip-in rigid covers. *Used, but in excellent condition.* (6 albums)

\$100

Ex Martyn Cole Collection.