

PROCLAMATION COINS



356\*  
**Brazil**, John V, twelve thousand eight hundred reis or Johanna, 1728M, (KM.139). *Good very fine or better.*  
\$8,500



357\*  
**Brazil**, John V, twelve thousand eight hundred reis or Johanna, 1731M, (KM.139). *Very fine or better.*  
\$8,500



358\*  
**Brazil**, Maria, six thousand four hundred reis or half Johanna, 1794 B (Bahia) (KM.226.2). *Considerable original mint bloom, nearly uncirculated.*  
\$1,250

359  
**Great Britain**, George III, guinea, fifth bust or spade type, 1787 (S.3729). *Toned good fine.*  
\$350



360\*  
**Great Britain**, George III, cartwheel copper twopence, 1797 (S.3776). *Relatively mark-free surfaces, good very fine.*  
\$300



361\*  
**Great Britain**, George III, copper halfpenny, 1799, six relief gun ports (S.3778). *Obverse with fine surfaces, much mint red, nearly uncirculated.*  
\$140



362\*  
**Great Britain**, George III, copper penny, 1806 (S.3780). *Nearly extremely fine.*  
\$100



363\*  
**India**, E.I.C., Madras Presidency, Indian style coinage, Hindu system, gold star pagoda, circa 1740 - 1807 struck at Madras mint (Pr.9; KM.303). *Extremely fine.*  
\$250

364

**India**, E.I.C., Madras Presidency, Indian style coinage, Hindu system, gold star pagoda, circa 1740 - 1807 struck at Madras mint (Pr.9; KM.303). *Extremely fine*. (2)

\$500

365

**India**, E.I.C., Madras Presidency, Indian style coinage, Hindu system, gold star pagoda, circa 1740 - 1807 struck at Madras mint (Pr.9; KM.303). *Extremely fine*. (2)

\$500



part

366\*

**Mexico**, Ferdinand VI, silver eight reales, 1755 MM, pillar dollar type (KM.104.2); Charles III, silver eight reales, 1806 TH (KM.109); Spain, Charles III, silver two reales, 1806 FA (KM.430.1). *The first coin has obverse and reverse scratches otherwise fine - good very fine*. (3)

\$350



367\*

**Netherlands**, Holland, silver gulden, 1764, (KM.73). *Nearly very fine*.

\$100



368\*

**Netherlands**, Utrecht, silver three gulden, 1793 (KM.117; Dav.18520). *Toned, good very fine*.

\$300

Purchased from Spink London 1972.



369\*

**Netherlands**, Utrecht, silver three gulden, 1794 (KM.117). *Good very fine*.

\$200



370\*

**Netherlands**, Utrecht, silver three gulden, 1794, reverse, standing figure with inverted spear facing and leaning on column, date in exergue, 1794, obverse, crowned arms (D.1852, KM.117). *Very fine with pleasant toning*.

\$150

371

**Netherlands**, West Friesland, silver three gulden 1793 (KM.141.2). *Striking weaknesses otherwise good fine*.

\$150



372\*

**Peru**, Ferdinand VII, imaginary bust, eight reales, 1811 Lima mint J.P. (KM.106.2). *Nearly very fine*.

\$150



373\*

**Spain**, Charles III, gold four escudos, 1788 M, Madrid Mint (KM.418.1a). *Very fine/good very fine*.

\$600



## HOLEY DOLLAR AND DUMPS



374\*

**New South Wales**, five shillings or holey dollar, 1813, struck on a Charles III Lima (Peru) mint eight reales 1807 J.P (Mira-Noble 1807/8; dies B/6:II/2). *Slightly porous, nearly very fine/good very fine and rare.*

\$75,000

Found in burnt out house in Newcastle, acquired by E(Ted) Hufnus and then in late 1970's J. Smith Collection (sold out of the collection privately in August 1994 through Barrie Winsor). The illustration in Mira-Noble is before this specimen was cleaned of encrustation, hence obverse porosity now.



375\*

**New South Wales**, fifteen pence or dump, 1813 (Mira dies A/1). *Traces of the centre of the reverse of the original coin on the obverse, old scratch through H of South, toned, evenly worn, nearly very fine and rare.*

\$25,000



376\*

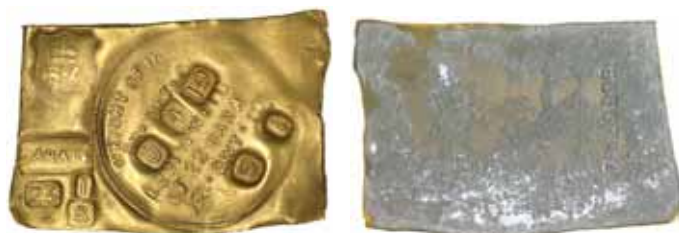
**New South Wales**, fifteen pence or dump, 1813 (Mira dies A/1). *Traces of reverse original coin on obverse, two reverse punch marks, milled edge clear and complete, evenly worn, nearly very fine and rare.*

\$20,000

Originally found in change by a storekeeper near Windsor in the 1940's.

## AUSTRALIAN GOLD COINS

### ADELAIDE ASSAY OFFICE



377\*

**Adelaide Assay Office**, electrotype of gold ingot (Hunt Deacon 7). *Dull matte finish, lead oxidation on reverse otherwise extremely fine.*

\$1,000



378\*

**Adelaide pound**, 1852, first type with beaded inner circle on reverse and die crack at top, fine edge graining (or milling). *Underlying mint bloom, minor contact marks otherwise good extremely fine and very rare, especially in this condition.*

\$120,000



379\*

**Adelaide pound**, 1852, second type with crenellated inner circle on the reverse. *A sharply struck early impression, reverse with considerable brilliance, choice uncirculated or virtually FDC and very rare as such, one of the finest known.*

\$125,000



380\*

**Adelaide pound**, 1852, second type with crenellated inner circle on the reverse. *Later die state with five raised dots or notches above 2 and C of 22 carats, considerable original mint bloom, nearly uncirculated and rare, especially in this condition.*

\$45,000



381\*

**Adelaide pound**, 1852, second type, with crenellated inner circle on the reverse. *Minor hairline scratches to left of crown, early die state, extremely fine.*

\$40,000

Ex Spink Australia Sale 11 (lot 518).



382\*

**Adelaide pound**, 1852, second type, with crenellated inner circle on the reverse. *Later die state with five raised dots or notches above 22 C on the reverse, frosty mint bloom, flat orb and shallow strike otherwise extremely fine.*

\$28,000

Slabbed by PCGS as MS61.



383\*

**Adelaide pound**, 1852, second type, trial strike in lead, from the dies in early die state. *Damaged otherwise fine and excessively rare.*

\$1,500

The Ingots and Assay Office pieces of South Australia, Melbourne (1953), Hunt Deacon, listed two on p.65 as 14 (a) (South Australia National Collection) and 14 b listed in 1915 N. Circular, present whereabouts unknown - this may be the example sold in Spink Stern Sale October 1975 (lot 22) (ex Capt Vivien Hewitt). In June this year Spink London sold, at auction, an irregular shaped flan striking with obverse only.

### SYDNEY MINT SOVEREIGNS



387\*

**Queen Victoria**, second type, 1862/1 overdate. *Reverse with very minor rim bruise at 4 o'clock and trace of edge milling filed smooth nearby, otherwise well struck good extremely fine or nearly uncirculated and very rare thus.*

\$6,000



388\*

**Queen Victoria**, second type, 1862. *Reverse rim bruise at 2.30, contact mark on tip of chin, considerable original mint bloom, nearly uncirculated and very rare in this condition.*

\$7,500

Private purchase from Spink Australia in 1984.



384\*

**Queen Victoria**, first type, 1855. *Some underlying mint bloom, very fine.*

\$3,000



389\*

**Queen Victoria**, second type, 1863. *Die filled gaps in E and G in sovereign on reverse, nearly uncirculated and very rare in this condition.*

\$6,000

Private purchase from Spink Australia in 1984.



385\*

**Queen Victoria**, second type, 1859. *Some original mint bloom within legends and devices, good extremely fine and rare in this condition.*

\$2,500



390\*

**Queen Victoria**, second type, 1864. *Full original mint bloom, choice uncirculated and rare in this condition, one of the finest known.*

\$6,000

Ex Spink Australia Sale 11 (lot 545) and sale 14 (lot 546).



386\*

**Queen Victoria**, second type, 1861. *Nearly uncirculated and rare in this condition.*

\$2,500



391\*

**Queen Victoria**, second type, 1866. *Subdued underlying frosty mint bloom, nearly uncirculated.*

\$2,500





392\*  
**Queen Victoria**, second type, 1868. *Considerable mint bloom, miniscule hairlines on obverse otherwise uncirculated.*  
 \$3,000



393\*  
**Queen Victoria**, second type, 1870. *Nearly full mint bloom with reflective fields, choice uncirculated and rare thus.*  
 \$2,500

Ex Spink Australia Sale 23 (lot 1321).



394\*  
**Queen Victoria**, second type, 1870. *Minor field hairline behind head otherwise full original mint bloom uncirculated/choice uncirculated.*  
 \$2,500

**SYDNEY MINT HALF SOVEREIGNS**



395\*  
**Queen Victoria**, first type, 1856, with filleted head by James Wyon. *Slight die clashing, a little rubbed over underlying cartwheeling mint bloom, good extremely fine and rare in this condition.*  
 \$25,000



396\*  
**Queen Victoria**, second type, 1859/8 overdate. *Nearly very fine/very fine and very rare thus.*  
 \$2,500



397\*  
**Queen Victoria**, second type, 1859. *Crinkled and straightened, otherwise nearly extremely fine.*  
 \$1,500

Ex Golden triangle, Ballarat find.



398\*  
**Queen Victoria**, second type, 1861. *Scuffed in front of face otherwise good very fine.*  
 \$1,500



399\*  
**Queen Victoria**, second type, 1863. *Has been bent and straightened otherwise very fine.*  
 \$1,500



400\*  
**Queen Victoria**, second type, 1864. *Very fine.*  
 \$1,500

Slabbed as very fine, Arabic 1 in date.



401\*  
**Queen Victoria**, second type, 1866. *Very fine.*  
 \$1,500

Slabbed as very fine.

**GOLD PATTERNS AND PROOFS**



402\*

**Queen Victoria**, Jubilee coinage, Sydney Mint pattern two pounds, 1887. *Brilliant proof, nearly FDC and excessively rare, possibly the finest known, only one other in private hands to match this piece, an outstanding rarity and a rare opportunity to acquire such an important coin.*

\$150,000

Ex Sharps Pixley Collection, Spink Australia Sale 30 (lot 1313) previously from Murdoch, Whetmore and Capt Vivien Hewitt Collections, and Spink Australia Sale 3 (lot 296).



403\*

**Queen Victoria**, Melbourne Mint, proof young head half sovereign, 1884. *Brilliant and frosted proof, FDC and extremely rare.*

\$75,000



404\*

**Queen Victoria**, Melbourne Mint, pattern Jubilee head half sovereign, 1887 (McD 33b) struck in platinum (4.016g). *Grey iridescent toned extremely fine and believed to be unique.*

\$35,000

Ex J.G. Murdoch (lot 653); King Farouk (lot 1498) and H.N. Strauss (private tender sale 1999) Collections (McD p56).



405\*

**Queen Victoria**, Melbourne Mint proof pattern Jubilee head half sovereign, 1891. *Brilliant FDC and excessively rare.*

\$75,000

Ex J.G. Murdoch Collection (lot 634).



406\*

**Queen Victoria**, Melbourne Mint, proof pattern old head half sovereign, 1898. *Brilliant and frosted proof FDC and excessively rare.*

\$75,000



**IMPERIAL SOVEREIGNS - SHIELD REVERSE**



407\*  
**Queen Victoria**, 1872/1 Melbourne. *Toned, good very fine and rare thus.*  
 \$750



408\*  
**Queen Victoria**, 1872 Melbourne. *Peripheral obverse die breaks and die break rim through O to nose, nearly uncirculated and rare in this state.*  
 \$600



409\*  
**Queen Victoria**, 1880 Sydney. *Lightly toned, relatively unmarked fields, uncirculated.*  
 \$600



410\*  
**Queen Victoria**, 1883 Melbourne. *Good very fine.*  
 \$750



411\*  
**Queen Victoria**, 1884 Melbourne. *Obverse scuff marks, otherwise nearly uncirculated.*  
 \$400

**IMPERIAL SOVEREIGNS - ST GEORGE REVERSE**



412\*  
**Queen Victoria**, 1872 Melbourne. *Extremely fine and rare.*  
 \$1,500

Ex Douro Cargo 1996 with Monetarium certificate.



413\*  
**Queen Victoria**, 1874 Sydney. *Cleaned and lightly rubbed otherwise good extremely fine.*  
 \$600



414\*  
**Queen Victoria**, 1875 Melbourne. *Nearly full mint bloom, frosty bloom on reverse, uncirculated and rare in this condition.*  
 \$2,500



415\*  
**Queen Victoria**, 1876 Melbourne. *Choice uncirculated.*  
 \$1,000

Ex Douro Cargo 1996 with Monetarium certificate.



416\*  
**Queen Victoria**, 1876 Melbourne. *Die flash mark on obverse, uncirculated/choice uncirculated.*  
 \$750



417\*  
**Queen Victoria, 1876 Sydney. Nearly uncirculated.**  
 Ex Douro Cargo 1996 with Monetarium certificate. \$750



418\*  
**Queen Victoria, 1878 Melbourne. Cleaned and slightly rubbed otherwise uncirculated.**  
 \$600



419\*  
**Queen Victoria, 1879 Melbourne (McD.157). Surface marking otherwise nearly uncirculated with some underlying brilliance.**  
 \$800



420\*  
**Queen Victoria, 1879 Melbourne (McD.157a). Slightly rubbed and cleaned otherwise nearly uncirculated.**  
 \$300



421\*  
**Queen Victoria, 1879 Sydney. Extremely fine/good extremely fine and very scarce in this condition.**  
 \$1,200



422  
**Queen Victoria, 1880 Melbourne (McD.159). Surface marks otherwise brilliant nearly uncirculated.**  
 Ex Douro Cargo (lot 1206). \$1,500



423\*  
**Queen Victoria, 1880 Melbourne (McD.159). Nearly uncirculated.**  
 \$1,500



424\*  
**Queen Victoria, 1880 Sydney (McD.158). Subdued original mint bloom, nearly uncirculated/uncirculated.**  
 \$750



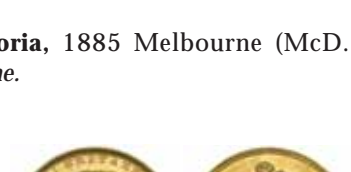
425\*  
**Queen Victoria, 1881 Melbourne (McD.161b). Choice uncirculated and rare thus.**  
 \$1,200



426\*  
**Queen Victoria, 1882 Melbourne. Minor contact marks otherwise uncirculated.**  
 \$650



427\*  
**Queen Victoria, 1883 Melbourne (McD.165a). Full original mint bloom, choice uncirculated.**  
 \$1,500



428  
**Queen Victoria, 1885 Melbourne (McD.169c). Good extremely fine.**  
 \$300



429\*  
**Queen Victoria, 1886 Melbourne. Nearly uncirculated.**  
 \$500



430\*  
**Queen Victoria**, young head, 1887 Sydney. *Full frosty mint bloom, uncirculated and rare in this condition.*

\$750



431\*  
**Queen Victoria**, 1892 Melbourne. *Considerable brilliance with minor contacts on obverse, uncirculated/choice uncirculated.*

\$500



432\*  
**Edward VII**, 1907 Sydney. *Choice uncirculated.*

\$500



433\*  
**George V**, 1923 Sydney. *High rims, minor surface marking otherwise nearly extremely fine/extremely fine and very rare.*

\$17,500

434  
**George V**, 1924 Melbourne. *Uncirculated.*

\$250



435\*  
**George V**, 1928 Melbourne. *Contact mark under chin otherwise extremely fine and rare.*

\$3,000



436\*  
**George V**, small head, 1930 Melbourne. *Uncirculated and scarce.*

\$600

Ex Spink Australia Sale 26 (lot 870).

### IMPERIAL HALF SOVEREIGNS



437\*  
**Queen Victoria**, 1882 Melbourne (McD 24a). *Full original mint bloom, gem uncirculated and rare.*

\$15,000

Ex Ballarat hoard 1978 and Spink Australia Sale 12 (lot 663)



438\*  
**Queen Victoria**, 1882 Melbourne (McD 24a). *Full original mint bloom, minute contact marks on cheek otherwise choice uncirculated and rare.*

\$9,000

Ex Ballarat hoard 1978 and Spink Australia privately in 1984.



439\*  
**Queen Victoria**, 1885 Melbourne. *Full mint bloom, choice uncirculated and very rare in this condition, one of the finest known.*

\$50,000

Virtually equal to the Roy Brook, R.G. & C. Pratley (lot 1543 in Sale 27) specimen.



440\*  
**Queen Victoria**, 1885 Melbourne. *Some mint bloom in the lettering, good extremely fine and rare in this condition.*

\$4,000





441\*  
**Queen Victoria**, Jubilee head, 1887 Melbourne (McD.33c).  
*Full mint bloom, choice uncirculated and rare in this condition, one of the finest known.*

\$5,000



442\*  
**Queen Victoria**, Jubilee head, 1887 Melbourne (McD.33c).  
*Nearly uncirculated.*

\$1,300



443\*  
**Queen Victoria**, Jubilee head, 1887 Sydney (McD.32a).  
*Lightly toned, full satin like mint bloom, choice uncirculated and rare in this condition, one of the finest known.*

\$4,000



444\*  
**Queen Victoria**, 1889 Sydney. *Nearly uncirculated/uncirculated and rare in this condition.*

\$7,000

Slabbed by PCGS as MS60.



445\*  
**Queen Victoria**, 1896 Melbourne. *Minute contact marks across forehead, hair and veil, uncirculated/choice uncirculated and rare in this condition, one of the finest known.*

\$5,000



446\*  
**Edward VII**, 1906 Melbourne. *Extremely fine/good extremely fine and rare in this condition.*

\$2,500



447\*  
**Edward VII**, 1909 Perth. *Dusty tone, minor hairlines otherwise nearly extremely fine and rare in this condition.*

\$2,000

448  
**George V**, 1911, 1912, 1914, 1915 and 1916 Sydney.  
*Uncirculated - choice uncirculated. (5)*

\$700

Ex Spink Australia sale 23 (lots 1453, 1457).

## PROOFS



449\*  
**George VI**, Melbourne Mint proof crown, 1937. *Brilliant FDC and rare.*

\$30,000

Ex Spink Australia Sales 13 (lot 1062) and 23 (lot 1473) .



450\*  
**George VI**, Melbourne Mint proof crown, 1937. *Minor hairline behind head otherwise FDC and rare.*

\$30,000

Ex USA collection and still in old lucite holder.



451\*  
**George VI**, Bombay Mint proof restrike halfpenny, 1943I.  
*FDC and very rare.*

\$15,000

452  
**Elizabeth II**, Melbourne Mint proof pennies, 1955 (2).  
*Brilliant full mint red, FDC.* (2)

\$800

Ex Spink Noble Sale 36 (lot 1260).

453  
**Elizabeth II**, Melbourne Mint proof set, 1956. *Penny brilliant red, shilling with toning, FDC.* (5)

\$1,000

Ex Spink Noble Sale 36 (lot 1263).

454  
**Elizabeth II**, Melbourne Mint proof set, 1956. *FDC.* (5)

\$750

455  
**Elizabeth II**, Melbourne Mint proof set, 1956. *FDC.* (5)

\$750

456  
**Elizabeth II**, Melbourne Mint proof set, 1956. *FDC.* (5)

\$750

457  
**Elizabeth II**, Melbourne Mint proof set, 1956. *FDC.* (5)

\$750

458  
**Elizabeth II**, Melbourne Mint proof set, 1956. *FDC.* (5)

\$750

459  
**Elizabeth II**, Melbourne Mint proof set, 1956. *Sixpence with small dark tone on obverse, otherwise FDC.* (5)

\$750

This and the previous five sets purchased all together at the time of issue.

460  
**Elizabeth II**, Melbourne Mint proof shilling, 1956. *FDC.*

\$100

461  
**Elizabeth II**, Melbourne Mint proof penny, 1956. *Nearly FDC.*

\$250

462  
**Elizabeth II**, Melbourne Mint proof set, 1957. *Light grey toned, FDC.* (4)

\$400

Ex Spink Noble Sale 36 (lot 1267).



part

463\*  
**Elizabeth II**, Perth Mint proof pennies, 1957. *Matte finish, FDC.* (4)

\$3,000

Ex Spink Noble Sale 36 (lot 1270).

464  
**Elizabeth II**, Perth Mint proof penny, 1959. *Minor carbon spots on reverse otherwise FDC.*

\$750

Ex Spink Noble Sale 36 (lot 1284).

465  
**Elizabeth II**, Melbourne Mint proof set, 1960. *In sealed plastic packet of issue, dark tone FDC.* (4)

\$400

466  
**Elizabeth II**, Melbourne Mint proof sets, 1960 (2) *FDC.* (8)

\$800

Ex Spink Noble Sale 36 (lot 1287).

467  
**Elizabeth II**, Perth Mint proof sets, 1960 and 1961. *Full mint red, FDC.* (4)

\$1,500

Ex Spink Noble Sale 36 (lot 1292).

468  
**Elizabeth II**, Perth Mint proof penny, 1960. *Nearly FDC.*

\$350

469  
**Elizabeth II**, Melbourne Mint proof set, 1961. *In sealed plastic pack of issue, FDC.* (4)

\$400

470  
**Elizabeth II**, Perth Mint proof set, 1961. *Halfpenny with carbon spot on obverse, nearly FDC.* (2)

\$400

471  
**Elizabeth II**, Melbourne Mint proof sets, 1962 (2). *FDC.* (8)

\$700

Ex Spink Noble Sale 36 (lot 1298).

472  
**Elizabeth II**, Perth Mint proof set, 1962. *Toning on halfpenny otherwise FDC.* (2)

\$600

473  
**Elizabeth II**, Perth Mint proof set, 1962. *Toned, nearly FDC.* (2)

\$350

474  
**Elizabeth II**, Melbourne Mint proof set, 1963. *In black plastic case of issue, FDC.* (4)

\$250

475  
**Elizabeth II**, Melbourne Mint proof set, 1963. *In black plastic case of issue, FDC.* (4)

\$250

476  
**Elizabeth II**, Melbourne Mint proof sets, 1963 (2). *One florin toned, FDC.* (8)

\$500

Ex Spink Noble Sale 36 (lot 1301).



477\*  
**Elizabeth II**, Perth Mint proof set, 1963. *FDC.* (2) \$1,100

478  
**Elizabeth II**, Perth Mint proof set, 1963. *Toned, nearly FDC.* (2) \$500

479  
**Elizabeth II**, Perth Mint proof set, 1963. *The penny completely flat in centre for one square cm, toned nearly FDC.* (2) \$350

## AUSTRALIAN COMMONWEALTH COINS

### CROWNS



480\*  
**George VI**, 1937 and 1938. *Choice uncirculated; uncirculated.* (2) \$900

Ex Spink Australia Sale 23 (lot 1481).

### FLORINS

An Important Collection of Florins formed in Sydney from the 1960's until the 1980's by a western Sydney collector, now deceased.



481\*  
**Edward VII**, 1910. *Full frosty original mint bloom, hairline scratch otherwise choice uncirculated.* \$3,500



482\*  
**George V**, 1911. *Lightly rubbed to clean, otherwise sharply struck nearly uncirculated.* \$5,000



483\*  
**George V**, 1912. *Polished to clean, otherwise good extremely fine with full detailed feathers on the emu.* \$2,500



484\*  
**George V**, 1913. *Rubbed to clean, otherwise nearly uncirculated.* \$4,000





485\*  
**George V, 1914.** *Rubbed to clean, otherwise nearly uncirculated.*

\$750



490\*  
**George V, 1917M.** *Full original mint bloom, uncirculated/choice uncirculated.*

\$2,500



486\*  
**George V, 1914H.** *Full mint bloom, lightly wiped otherwise uncirculated and very rare in this condition.*

\$15,000



491\*  
**George V, 1918M.** *Full original mint bloom, gem uncirculated, one of the finest known.*

\$4,500



487\*  
**George V, 1915.** *Full original golden brown mint bloom, mottled toning on the obverse, minor contact marks otherwise choice uncirculated and very rare in this condition, one of the finest known.*

\$40,000



492\*  
**George V, 1919M.** *Lightly toned full original mint bloom, choice uncirculated and rare in this condition.*

\$7,500



488\*  
**George V, 1915H.** *Full original satin-like mint bloom, choice uncirculated and rare in this condition, one of the finest known.*

\$17,500



493\*  
**George V, 1921.** *Rubbed to clean otherwise uncirculated and rare.*

\$2,500



489\*  
**George V, 1916M.** *Full original mint bloom, choice uncirculated.*

\$4,000



494\*  
**George V, 1922.** *Well struck, uncirculated and rare.*

\$4,000



495\*  
**George V**, 1923. *Polished to clean, otherwise uncirculated.*  
 \$1,500



496\*  
**George V**, 1924. *Full original frosty mint bloom, choice uncirculated.*  
 \$4,000



497\*  
**George V**, 1925. *Full brilliant original mint bloom, specimen-like gem uncirculated and one of the finest known.*  
 \$5,000



498\*  
**George V**, 1926. *Wiped to clean, otherwise uncirculated and rare.*  
 \$2,500



499\*  
**George V**, 1927. *Full original mint bloom, choice uncirculated or nearly gem uncirculated.*  
 \$2,500

500  
**George V - Elizabeth II**, set of four commemoratives, 1927, 1934-35, 1951 and 1954. *The second polished, otherwise uncirculated.* (4)  
 \$350



501\*  
**George V**, 1928. *Full original subdued mint bloom, choice uncirculated.*  
 \$2,000



502\*  
**George V**, 1931. *Full original pearl-like mint bloom, choice uncirculated.*  
 \$500



503\*  
**George V**, 1932. *Full specimen-like mint bloom without any surface marks, lightly wiped, choice uncirculated and one of the finest known of this key date rarity.*  
 \$30,000



504\*  
**George V**, 1933. *Full mint bloom with unmarked surfaces, choice uncirculated and very rare in this condition, one of the finest known.*  
 \$18,000





505\*

**George V, 1934.** Full original mint bloom choice uncirculated/ gem uncirculated and rare thus.

\$2,500



506\*

**George V, 1935.** Lightly polished to clean, choice uncirculated.

\$1,500



507\*

**George V, 1936.** Full original mint bloom, gem uncirculated.

\$600

508

**George VI, 1938, 1940-1945,** in 2 x 2 holders. Uncirculated. (10)

\$600



509\*

**George VI, 1939.** Lightly toned subdued mint bloom, choice uncirculated and rare in this condition.

\$2,000

510

**George VI - Elizabeth II, 1946-1963,** in 2 x 2 holders. Uncirculated. (14)

\$500

## THE IAN WITHERS COLLECTION

Formed over the last thirty years, this collection of shillings is one of the finest ever formed.

### SHILLINGS

The following five coins have been sold prior to the auction but are shown here as a permanent record of these important pieces.



**George V, Melbourne Mint pattern or trial shilling, 1918M,** with two raised dots either side of the date to identify struck in .500 fine silver. Grey toned with underlying brilliance and well struck like a specimen and excessively rare.

Ex C.J. Cerutti, Secretary to the Treasury.



**George V, Melbourne Mint proof shilling 1920M.** Die field striations visible under magnification confirming specially polished dies, brilliant gem proof FDC and excessively rare, the only specimen known to us in private hands.

Ex A.M. Le Souef and S.V. Hagley Collection and Spink Australia Sale 6 (lot 951).



**George V, Melbourne mint pattern shilling, 1920M star (5.66 gms).** Full satin-like iridescent toned mint bloom, FDC and excessively rare.

Ex Museum of Victoria Duplicate Sale, Spink Australia sale 25 (lot 945).





**George V**, Melbourne Mint proof shilling, 1926. *Stunning gold and blue grey iridescent toned brilliant gem proof, FDC, extremely rare and the finest known.*

Ex P. Spalding Collection (private purchase through B. Winsor).



514\* **George V**, 1913. *Full original frosty mint bloom, choice uncirculated and very rare in this condition.*

\$9,000

Ex Spink Australia Sale 23 (lot 1601).



**George V**, Melbourne Mint proof shilling 1928. *Deep grey brown brilliant toned patina, brilliant gem proof, FDC and extremely rare.*

Ex P. Spalding Collection (private purchase through B. Winsor).



515\* **George V**, 1914. *Golden olive brown toning on full original mint bloom and well struck, choice uncirculated/gem uncirculated and rare in this condition, one of the finest known.*

\$5,000

Ex Spink Australia Sale 23 (lot 1605).



511\* **Edward VII**, 1910. *Obverse hairline otherwise toned grey brown, uncirculated.*

\$450



516\* **George V**, 1915. *Full original cartwheeling mint bloom, choice uncirculated/gem uncirculated and very rare in this condition, one of the finest known.*

\$20,000



512\* **George V**, 1911. *Full original frosty mint bloom, partial golden brown toning, choice uncirculated and rare in this condition, one of the finest known.*

\$5,000

Ex F. Gates Collection.



517\* **George V**, 1915H. *Golden crimson and grey toned, full original mint bloom, softly struck on star otherwise choice uncirculated, very rare in this condition and one of the finest known.*

\$20,000

Ex Spink Australia Sale 4 (lot 734).



513\* **George V**, 1912. *Full original mint bloom with brilliant die flash area on right side of reverse, minute contact marks under emu, otherwise gem uncirculated and very rare in this condition, one of the finest known.*

\$12,000



518\* **George V**, 1916M. *Full original mint bloom, gem uncirculated, possibly the finest known.*

\$3,000



519\*  
**George V, 1917M.** Full blue and red brown toned original mint bloom, gem uncirculated.

\$2,000



520\*  
**George V, 1918M.** Full original mint bloom and well struck with deep grey iridescent toning, choice uncirculated and rare in this condition, one of the finest known.

\$4,000



521\*  
**George V, 1921 star.** Well struck, full original mint bloom, reverse brilliant, gem uncirculated and very rare in this condition, one of the finest known.

\$25,000

Ex Spink Australia Sale 6 (lot 1247).



522\*  
**George V, 1922.** Full original mint bloom, gold brown toning, gem uncirculated and rare in this condition, possibly the finest known.

\$6,000

Ex Spink Australia Sale 22 (lot 2126) and Parkhill Collection (Sale 46, lot 1702).



523\*  
**George V, 1924.** Beautiful iridescent toned full original mint bloom, gem uncirculated and very rare in this condition, possibly the finest known.

\$10,000

Ex Spink Australia Sale 29 (lot 3107).



524\*  
**George V, 1925.** Dark blue grey toned mint bloom, well struck, choice uncirculated.

\$1,500



525\*  
**George V, 1927.** Toned with full original mint bloom, die rust showing, especially on the obverse, choice uncirculated.

\$2,000



526\*  
**George V, 1931.** Full original satin or pearl-like mint bloom, choice uncirculated.

\$1,000



527\*  
**George V, 1933.** Full original mint bloom, subdued dull surface on the obverse, reverse with satin-like brilliance, gem uncirculated and very rare in this condition, one of the finest known.

\$25,000



528\*  
**George V, 1936.** Full original pearl-like mint bloom, gem uncirculated.

\$1,500



529\*  
**George V, Melbourne Mint proof or specimen shilling, 1934.** Unmarked, full original semi-brilliant mint bloom, FDC and rare.

\$15,000





530\*  
**George V**, Melbourne mint specimen shilling, 1935. *Deep red brown and grey patina, well struck, hairline die break tail of emu to scroll, nearly FDC and extremely rare in this state.*  
 \$10,000

Ex Spink Australia Sale 7 (lot 730).



534\*  
**George V**, shilling, 1918M. *Full original mint bloom with attractive grey toning, virtually surface mark free, however softly struck on part of scroll, otherwise gem uncirculated, one of the finest known.*  
 \$8,000



part

531\*  
**George VI**, 1938-1952, missing 1946, 1948; includes gem uncirculated 1939, choice uncirculated 1940 and 1946 dot. *The 1938 and 1941 toned, uncirculated - gem uncirculated.* (13)  
 \$1,800

532  
**Elizabeth II**, proofs, 1955-9, 1962 and 1963; currency 1953, 1954, 1960, 1961. *Choice uncirculated - FDC.* (11)  
 \$600

**Outstanding Florin and Shilling 1918M**



533\*  
**George V**, florin, 1918M. *Full original mint bloom with minimal contact marks, magnificent dark blue grey and iridescent patina, equal to a specimen issue, gem uncirculated or FDC and very rare thus, probably the finest known.*  
 \$12,000

**SIXPENCES**



535\*  
**Edward VII**, 1910. *Toned with full original mint bloom, patchy reverse toning, uncirculated.*  
 \$300



536\*  
**George V**, 1911. *Toned golden grey, full original mint bloom, choice uncirculated and rare in this condition, one of the finest known.*  
 \$3,500



537\*  
**George V**, 1912. *Beautifully patinated dark toned full original mint bloom, obverse hairline die break from F.D past shoulder, gem uncirculated and very rare in this condition, one of the finest known.*  
 \$5,000



538\*  
**George V**, 1917M. *Attractive light gold and blue toning, minor hairlines on reverse otherwise choice uncirculated.*  
 \$2,000





539\*

**George V, 1919M.** *Blue and golden iridescence on reverse, full original mint bloom, gem uncirculated and rare in this condition, one of the finest known.*

\$4,000

Ex G. Barraclough Collection (Spink Australia Sale 21, lot 1055).



540\*

**George V, 1920M.** *Dark toning around lettering and devices on reverse, full original mint bloom, choice uncirculated and rare in this condition.*

\$3,500



541\*

**George V, 1921.** *Full olive-grey and iridescent mint bloom, clear concavity above date where star was tooled out on the die, choice uncirculated.*

\$750



542\*

**George V, 1925.** *Underlying brilliance on reverse fields, choice uncirculated and rare in this condition.*

\$2,000



543\*

**George V, 1926.** *Blue grey toning on semi brilliant reverse, uncirculated/choice uncirculated.*

\$750



544\*

**George V, 1927.** *Dark grey toned patina with lighter crimson and gold on the reverse, choice uncirculated.*

\$750



545\*

**George V, 1927.** *Full mint bloom, reverse fields frosty with minute rim nick at 2 o'clock, choice uncirculated/uncirculated.*

\$450



546\*

**George V, 1936.** *Light gold subdued tone on obverse, full original mint bloom choice uncirculated/gem uncirculated.*

\$350

547

**George VI - Elizabeth II, 1938, 1942, 1942D, 1943D, 1944S, 1945, 1946, 1948, 1950, 1951 and 1960.** *Choice uncirculated. (11)*

\$350

## OTHER PROPERTIES

### FLORINS



548\*

**Edward VII, 1910.** *Slightly rubbed otherwise extremely fine.*

\$900

Private purchase from Spink Australia in 1984.



549\*

**George V, 1912.** *Considerable mint bloom, uncirculated and very rare in this condition.*

\$10,000

Ex Spink Australia Sale 26 (lot 931).



550\*  
**George V, 1913.** *Lightly toned, slightest rubbing on emu feathers and other highpoints otherwise extremely fine and rare in this condition.*

\$2,000

Ex Spink Australia Sale 12 (lot 1486).



551\*  
**George V, 1914H.** *Some Mint bloom, good extremely fine and rare in this condition.*

\$3,000



552\*  
**George V, 1915H.** *Considerable mint bloom, uncirculated and rare in this condition.*

\$4,000

Ex Spink Australia Sale 37 (lot 1408).



553\*  
**George V, 1916M.** *Full original mint bloom, uncirculated/choice uncirculated and rare in this condition.*

\$2,500

Ex Spink Australia Sale 5 (lot 515) and Sale 26 (lot 940).



554\*  
**George V, 1916M.** *Virtually full original mint bloom, uncirculated.*

\$1,500



555\*  
**George V, 1917M.** *Nearly full original mint bloom, uncirculated.*

\$1,500



556\*  
**George V, 1918M.** *Full original mint bloom, choice uncirculated and rare in this condition.*

\$4,000

Ex Spink Australia Sale 26 (lot 944) (G. Barraclough Collection).



557\*  
**George V, 1919M.** *Die filled, M almost completely disappeared, evenly worn very good and rare as such, the best example we have seen.*

\$200

Sent to us for examination and sale by a U.S. colleague.



558\*  
**George V, 1921.** *Subdued original mint bloom, light grey toned, nearly uncirculated and rare in this condition.*  
 \$1,500



562\*  
**George V, 1924.** *Light dull matte finish, nearly uncirculated and unmarked.*  
 \$2,500



559\*  
**George V, 1922.** *Well struck for this date, attractive iridescent tone, nearly full original mint bloom, choice uncirculated and rare in this condition.*  
 \$6,000

Ex Spink Australia Sale 26 (lot 949).



563\*  
**George V, 1926.** *Small graze on portrait otherwise full original mint bloom, uncirculated and rare in this condition.*  
 \$2,500

Ex Spink Australia Sale 26 (lot 954).



560\*  
**George V, 1922.** *Considerable mint bloom, obverse with orange peel effect from rusty or deteriorated die, virtually uncirculated and rare in this condition.*  
 \$4,500



564\*  
**George V, 1927.** *Considerable original mint bloom, uncirculated.*  
 \$800

Private purchase from Spink Australia in 1984.



561\*  
**George V, 1923.** *Peripheral die breaks on the reverse, full brilliant mint bloom choice uncirculated, proof-like surface, nearly gem and rare in this condition.*  
 \$7,000

Ex John Wilson Collection and Spink Australia Sale 23 (lot 1538).



565\*  
**George V, 1927.** *Lightly toned with subdued original mint bloom, uncirculated.*  
 \$750

566  
**George V, 1927 Canberra, 1931.** *The first proof-like, second satin-like subdued mint bloom, uncirculated. (2)*  
 \$600

Private purchase from Spink Australia in 1984.





567\*  
**George V, 1931. Lightly toned full original mint bloom, choice uncirculated.**

\$500

Private purchase from Spink Australia in 1984.



572  
**George V, 1934. Full original but dusty mint bloom, uncirculated/choice uncirculated.**

\$2,000

Ex Spink Australia Sale 26 (lot 972).



568\*  
**George V, 1931. Full original mint bloom choice uncirculated.**

\$500

Private purchase from Spink Australia in 1984.



573\*  
**George V, 1935. Subdued full mint bloom, lightly toned on reverse, uncirculated.**

\$1,500

Ex Spink Australia Sale 30 (lot 1506).



569\*  
**George V, 1932. Nearly extremely fine/extremely fine and rare in this condition.**

\$2,000



574\*  
**George V, 1935. Subdued original mint bloom light toning, two minute contact marks on the obverse otherwise uncirculated.**

\$1,500



570\*  
**George V, 1934-35 Melbourne Centenary. Light grey toned, choice uncirculated.**

\$750

Ex Spink Australia Sale 30 (lot 1505).



575\*  
**George V, 1936. Full original mint bloom, uncirculated/choice uncirculated.**

\$500

Ex Spink Australia Sale 30 (lot 1592).



571\*  
**George V, 1934-35 Melbourne Centenary. Lightly toned, uncirculated.**

\$400



576\*  
**George V, 1936. Attractive lightly toned subdued mint bloom, choice uncirculated.**

\$400

**SHILLINGS**



577\*  
**Edward VII**, 1910. *Frosty mint bloom, nearly uncirculated.*

\$400

Ex Spink Australia Sale 30 (lot 1513).



578\*  
**George V**, 1913. *Blotchy toned subdued original mint bloom, choice uncirculated and rare in this condition, one of the finest known.*

\$6,000

Ex Spink Australia Sale 34 (lot 1509).



579\*  
**George V**, 1915. *Porous surface from cleaning of heavy tone, otherwise extremely fine and rare.*

\$1,000

Ex Spink Australia Sale 12 (lot 714A).



580\*  
**George V**, 1915H. *Contact mark behind kangaroo's shoulder, minor contact on band of crown, otherwise frosty mint bloom nearly uncirculated and rare.*

\$2,500



581\*  
**George V**, 1918M. *Brown and grey toned, subdued original mint bloom, nearly uncirculated/uncirculated.*

\$1,000

Slabbed by NGC as MS63.



582\*  
**George V**, 1921 star. *Die flash in front of forehead, full original mint bloom, choice uncirculated and very rare in this condition, one of the finest known.*

\$20,000

Ex Spink Australia Sale 30 (lot 1606).



583\*  
**George V**, 1924. *Matte mint bloom, minor reverse rim scratch and obverse hairline, die flash at crown, uncirculated and rare in this condition.*

\$5,000

Private purchase from Spink Australia in 1984.



584\*  
**George V**, 1925. *Die breaks on obverse through portrait and rim at 3.30, full mint bloom, choice uncirculated.*

\$1,000

Ex Spink Australia Sale 30 (lot 1609).



585\*  
**George V**, 1926. *Full original mint bloom, choice uncirculated and very scarce in this condition.*

\$1,000

Ex Spink Australia Sale 34 (lot 1524).



586\*  
**George V**, 1936. *Full original pearl-like mint bloom, subdued on obverse, choice uncirculated.*

\$600

Ex Spink Australia Sale 30 (lot 1528).



587\*  
**George V**, 1936. *Subdued original mint bloom, relatively unmarked, lightly toned uncirculated.*

\$450



588\*  
**George VI**, 1939. *Full satin-like mint bloom on obverse, reverse semi-brilliant, choice uncirculated/gem uncirculated and rare in this condition, one of the finest known.*

\$750

589  
**George VI**, 1939, 1941. *Nearly uncirculated; choice uncirculated. (2)*

\$200

590  
**George VI**, 1946 dot (Perth Mint). *Lightly toned subdued mint bloom, nearly uncirculated.*

\$150

**SIXPENCES**



591\*  
**George V**, 1923. *Well struck, full original semi-matte mint bloom, well centred, gem uncirculated and rare, one of the finest known.*

\$7,000

Ex John Wilson Collection and Parkhill Collection (lot 1727).

**THREEPENCES**



592\*  
**Edward VII**, 1910. *Die break from emu's back through C to rim, uncirculated.*

\$100



part

593\*  
**Edward VII**, 1910. Also British third farthing 1902. *The first toned, uncirculated, second full brilliant mint red. (2)*

\$120



594\*  
**George V**, 1912. *Subdued original mint bloom, spotted, otherwise nearly uncirculated and rare.*

\$450

Slabbed by NGC as MS61.



595\*  
**George V**, 1915. *Grey toned good very fine and rare in this condition.*

\$250



596\*  
**George V**, 1915. *Toned good very fine and rare in this condition.*

\$250



597\*  
**George V**, 1917M. *Die break from scroll end on right to rim, full mint bloom, choice uncirculated.*

\$350



598\*  
**George V**, 1918M. *Die break rim to kangaroo's head, nearly uncirculated/uncirculated.*

\$240

599  
**George V**, 1921M. *Nearly uncirculated.*

\$100





600\*  
**George V, 1922/1 overdate.** Six pearls, nearly full centre diamond, good very fine/nearly extremely fine and extremely rare in this condition, probably the fifth or sixth finest known.

\$35,000



601\*  
**George V, 1924.** Extremely fine or better with proof-like surface.

\$400

602  
**George V, 1927.** Dark blue grey tone, nearly uncirculated.

\$100



603\*  
**George V, 1934/3 overdate.** Faint trace of top tip of 3, light grey toned good extremely fine and rare.

\$500



604\*  
**George V, 1934.** Nearly uncirculated.

\$60

605  
**George VI, 1938 and 1941.** Full original mint bloom, gem uncirculated. (2)

\$120



606\*  
**George VI, 1942.** Attractive full original mint bloom, contact mark on head and reverse rim nicks at top, otherwise choice uncirculated and very rare in this condition.

\$1,500

## PENNIES



607\*  
**George V, 1911.** Mostly original mint red, uncirculated.  
 \$500



608\*  
**George V, 1911.** Mostly original mint red, uncirculated.  
 \$450



609\*  
**George V, 1916I.** Attractive toning reverse full original mint red, gem uncirculated or FDC and rare thus.  
 \$1,000

Private purchase from Spink Australia in 1984.



610\*  
**George V, 1916I.** Red grey toned with brilliant original mint red, uncirculated.  
 \$900

Ex Spink Australia Sale 34 (lot 1574).



611\*  
George V, 1919 dot below. *Uncirculated.*

\$800



612\*  
George V, 1919 dot below scroll, London die. *Black carbon area on reverse otherwise full original mint red, uncirculated.*

\$500

Ex Spink Australia Sale 34 (lot 1577).



613\*  
George V, 1920 dot below scroll, Indian die. *Brown and red, nearly uncirculated and rare in this condition.*

\$500



614\*  
George V, 1923 London die. *Peripheral hairline die breaks at top of reverse, full original mint red, toned in places, choice uncirculated and rare as such.*

\$750



615\*  
George V, 1925. *Lightly cleaned otherwise good very fine.*

\$250



616\*  
George V, 1930 Indian die. *Two old scratches, otherwise glossy brown very fine and rare, especially in this condition.*

\$25,000

Ex Spink Australia Sale 14 (lot 965).



617\*  
George V, 1930 Indian die. *Minute rim bruises, toned nearly very fine and rare.*

\$22,500

Ex Spink Australia Sale 14 (lot 967).



618\*  
George V, 1930 Indian die. *Dark brown original patina, very fine/good very fine and free of rim damage, very rare in this condition.*

\$20,000

Ex Noble Numismatics Sale 68 (lot 1684).



619\*  
George V, 1930 Indian die. *Two nicks on obverse rim at 6 o'clock otherwise dark toned fine/good fine and rare.*

\$16,000

Ex Noble Numismatics Sale 68 (lot 1690).





620\*  
**George V**, 1934 and 1935. *Nearly uncirculated; uncirculated.*  
 (2)

\$400



621\*  
**George V**, 1935. *A few tiny carbon spots on reverse and a large spot on obverse edge at 11 o'clock otherwise almost full mint red uncirculated.*

\$150

622  
**George V - George VI**, 1936, 1940 K.G.. *The first has edge filed and dent otherwise some red, extremely fine - nearly uncirculated.* (2)

\$120

623  
**George VI**, 1938, 1940, 1941, 1942Y. (2), 1943Y, 1945. *Nearly uncirculated - uncirculated.* (7)

\$200



Lot 624 part

624\*  
**George VI**, 1939, 1941, 1948, 1949, also halfpennies, 1940, 1951 PL. *Brilliant full original mint red, choice uncirculated.*  
 (6)

\$300

Ex Spink Australia Sale 34 (lot 1590).



625\*  
**George VI**, 1946. *Contact marks on head, brown with red, dull section on reverse, good extremely fine and rare thus.*

\$250



626\*  
**George VI**, 1947 Y. *Brown and red, nearly uncirculated and very scarce.*

\$350



part

627\*  
**George VI - Elizabeth II**, 1948Y., 1950Y., 1951Y., and 1953. *The first with traces of mint red and scarce thus, the last streaky tone with contact marks on cheek, nearly uncirculated - uncirculated.* (4)

\$350

### HALFPENNIES

628  
**George V**, 1911 and 1914. *The first dark brown with red, second mottled red, both good extremely fine.* (2)

\$250



629\*  
**George V**, 1912H. *Full original mint red, choice uncirculated.*

\$750





630\*  
**George V, 1912H.** Full original mint red, light toning on obverse, choice uncirculated.

\$600

Ex Spink Australia Sale (lot 1595).



636\*  
**George V, 1916I.** Attractive crimson red iridescence, choice uncirculated.

\$900

Ex Spink Australia Sale 14 (lot 995).



631\*  
**George V, 1912H.** Red and brown, uncirculated.

\$350

637  
**George V, 1917I.** Some mint red, nearly uncirculated.

\$100



632\*  
**George V, 1913.** Uneven brown and red, nearly uncirculated.

\$400



638\*  
**George V, 1918I.** Even brown, nearly extremely fine and rare in this condition.

\$400



633\*  
**George V, 1913.** Brown and red nearly uncirculated.

\$300



639\*  
**George V, 1919.** Full original mint red, uncirculated.

\$350



634\*  
**George V, 1914.** Considerable original mint red, uncirculated and rare in this condition.

\$800



640\*  
**George V, 1919.** Full original mint red, uncirculated. (2)

\$550



635\*  
**George V, 1914.** Obverse toned, reverse nearly full original mint red, nearly uncirculated / uncirculated.

\$800



641\*  
**George V, 1920.** Full original mint red, lightly toned or subdued, uncirculated.

\$600

Ex Spink Australia Sale (lot 1600).

642  
**George V, 1921.** Brown with red, nearly uncirculated/uncirculated.

\$150



643\*  
**George V, 1923.** Even brown, good very fine and rare in this condition.

\$5,000



644\*  
**George V, 1923.** Very fine.

\$3,500



645\*  
**George V, 1923.** Obverse lamination otherwise very fine.

\$3,500



646\*  
**George V, 1923.** Eight pearls, diagnostic peripheral die breaks on both sides, glossy brown very fine or better and rare in this condition.

\$3,000

647  
**George V, 1926 and 1927.** Some red in the first, good extremely fine. (2)

\$150



part

648\*  
**George V, 1930 and 1931.** Extremely fine; nearly uncirculated. (2)

\$300



part

649\*  
**George V, 1932, 1933 and 1935.** Second with considerable original mint red, nearly uncirculated. (3)

\$300

650  
**George VI, 1938, 1940, 1941, 1942Y., and 1950 Y.** Nearly uncirculated - choice uncirculated. (5)

\$200



651\*  
**George VI, 1939 kangaroo reverse.** Some traces of red, attractive blue brown patina, good extremely fine.

\$250