

---

**Sixth Session, Commencing at 9.30 am**

---

**MISCELLANEOUS**

1465

**Coin trays**, by Lighthouse. *In card covers as supplied, fine.* (10)

\$100

Used to house the Alexander Collection of nineteenth century tokens.

1466

**Accessories**, Abafil coin display cases (4), coin and banknote albums with plastic sleeves (6). *Very fine.* (10)

\$100

1467

**Accessories**, coin capsules in various sizes (100s), coin/banknote albums and cases (15), plastic coin/banknote sleeves (50). *Mostly fine.* (approx 165)

\$80

1468

**Sovereign case**, hallmarked gold (9, .375, 16.3g) outer case engraved 'A A/from/L L/28-3-14.' *Very good.*

\$300

1469

**Sovereign case**, in 9 carat gold, inscribed E.C. initials on front and date 24.12.16 on back. *Broken pin, fine.*

\$100

1470

**Sovereign case**, in gold (tests as 9ct, 22.9g) inside 'Trademark A.L.D. Dennison Watch Case Co 495 16' in six lines and 'Made in England Gold-Cased Guaranteed to wear 20 years around inner rim'. *Very good.*

\$500

1471

**Case for sovereign and half sovereign**, in silver, hallmarked EJH (within three circles) Birmingham 1906 (length 50mm, width 30mm). *Very fine.*

\$110

1472

**Silver coin purse**, c1900, hinged, with ring top suspension for wearing on fob chain (40x30mm), no hallmark or maker's name, 'E.C.' copperplate initials on front. *Very fine.*

\$50

1473

**Gent's antique wallet**, made of soft elephant skin dyed black, with latch closer, inside lined with green satin and on one side an elephant skin purse with compartment behind and on the other side is a note compartment, on front is a sterling silver shield marked for Birmingham 1905 with maker's initials, 'FM', inscribed in the centre with initials, 'J.M.A'. *Some wear around outside edges, fine, inside virtually unused.*

\$50

1474

**Great Britain**, Queen Victoria, penny, 1884, reverse design voided and obverse shaved with brooch pin fitted and fancy border added to coin. *Very fine.*

\$50

1475

**Coin bracelet**, 17.5cm, made from Australian threepences, 1910. *Broken link before clasp, fine.*

\$50

1476

**Coin bracelet**, made from Australian threepences, sixpences, shillings and a florin, all George V. *Missing one threepence from link, fine.*

\$50

1477

**Australian coins**, florin and shilling 1910 brooch mounted; sixpences (2) and threepences (4) 1910 in two brooch mounts, bracelet of nine 1910 threepences; George V, 1916M threepences (3), brooch mount; George VI, bracelets (2) with silver coins engraved; Elizabeth II, decimal pen set, map of Australia designed by Crystal Craft; foreign coins in silver mounts and chains as necklaces, bracelets, ladies wristwatches (3), diamond brooch semi-precious gem stones and a money box in brass by NM Co Bombay with a few Indian coins and two badges. *Fair - uncirculated.* (approx 100)

\$300



1478\*

**Great Britain**, Queen Victoria, young head half sovereign, 1879 (S.3860E), with handcrafted gold scroll mount with suspension loop. *Very fine.*

\$200

1479

**Australia**, Queen Victoria, Jubilee sovereign, 1887 Melbourne. *Brooch mounted, very fine.*

\$350

1480

**Australia**, Edward VII, sovereign 1904M (Melbourne). *Brooch mounted on obverse with 18 carat gold bar, otherwise very fine.*

\$450

1481

**Australia**, George V, sovereign 1917P (Perth) set in surround claw mount (12.33g). *Very fine.*

\$500

1482

**Australia**, George V, sovereign, 1918M (Melbourne), jeweller's copy. *Good very fine.*

\$300

1483

**Australia**, assortment of sovereigns, in surround mounts 1912M, 1925, 1926P, soldered loop mount at top of 1903P; half sovereign 1912 set as a ring; also silver pocket watch with key. *Very good - very fine.* (6)

\$1,700

1484

**France**, Third Republic, twenty francs, 1902 (Rooster), held in a gold surround mount. *Nearly extremely fine.*

\$300

1485

**South Africa**, Republic, one rand 1967, quarter krugerrand, 1986, both set in surround claw mounts. *Extremely fine.* (2)

\$650

1486

**Australia**, Coca Cola sovereign, 7.4g in 99.99 fine gold, 1997. *In case of issue with certificate no 07468, uncirculated.*

\$350

Ex Gray Donaldson Collection.

1487

**Natural gold ingots**, 9.5g and 5.9g. *Very fine.* (2)

\$650

Ex Australian Coin Auctions Sale 256 (lots 234, 235) and Gray Donaldson Collection.

1488

**Alluvial gold**, flattened smooth round ingot, panned at the Turon River (37.2g). *Extremely Fine.*

\$1,500

Ex Gray Donaldson Collection.

1489

**J(ohnson) M(atthey)**, Assayers, Refiners, two ounce .9999 fine gold ingot, no 009229. *Uncirculated.*

\$3,000

Ex Gray Donaldson Collection.

1490

**Australian Bullion Company**, one ounce .9999 gold ingots. *Uncirculated.* (4)

\$6,000

Ex Gray Donaldson Collection

1491

**Australian Bullion Company**, 500g 99.98 fine silver ingot.

\$300

Ex Gray Donaldson Collection.

1492

**Silver ingots**, Capricorn pendant (999; 4g); Fine Silver pendant with map of Australia on obverse, (999; 10g); another identical (999; 20g); Australian Bullion Co (ABC) pendant (99.98; 0.50oz); limited edition Expo 86 ingot (999+; 1g) in folder with certificate no.09924; Wrest Point Federal casino token for Aust\$30, c1983, in silver (octagon; 20.6g), on sealed card by Franklin Mint; oddments of silver jewellery, includes dress ring, pendant, bracelet and necklace, the last two missing securing clips (tot wt 21.59g); also damaged gold pendant (18ct; 4.3g), inset with small diamonds (4 of 6 present). *Good - uncirculated.* (11)

\$200



1493\*

**Hong Kong**, Queen Victoria, silver ingot (5.5 ounces), (c1970) Hong Kong and Shanghai Specie Office with crown over VR999.9 (KM.XB13). *Nearly Uncirculated.*

\$150

Ex Gray Donaldson Collection.



1494\*

**Gold ingot pendant**, a copy of a Credit Suisse 10g 999.9 gold ingot with dragon on reverse, base edge stamped 14K585, actual wt approx 10.47g, together with a gold-like necklace (58cm). *Very fine - extremely fine.*

\$350

1495

**Vintage mourning bracelet**, band of woven hair and in the centre is a gold (tests as 9ct) rectangular locket, edged with pearls, and in the centre under glass is a braided lock of blonde hair, the woven band hair frayed; another bracelet in silver with seven oval bezels, each fitted with a polished opaque, white hardstone (or plastic?) and on each is an amethyst (approx 1.25ct) claw set in a decorative silver fitting (18cm long), one connecting lug missing from one bezel and another bezel broken and needs joining; brass locket with engraved pattern on left side of lid, attached to a muff chain (approx 71cm), missing securing loop on one end; necklace of small tapering pearls with 9ct gold securing catch, broken at one end (approx 40cm), in case by Stewart Dawson & Co, with enclosed card that reads 'Esperance Dorothy Corbould 1895-1984'; vintage horseshoe stick pin in base metal; steel pin with rolled gold ball at end with small portion of safety chain, rest of fitting missing; broken pieces from vintage rolled gold spectacles. *Defects as specified above, otherwise very good - very fine.* (7)

\$100

Esperance Corbould was the sister of Gordon Clarence Corbould, a Australian submariner lost on the submarine AE1 when it disappeared without trace in WWI.

See lots 1528 and 5074 for other items to Corbould family.

1496

**Ladies bangles**, rope wire style(4) (gross weight 30g, probably .900 fine). *Very fine.* (4)

\$900

1497

**Gold bangle**, in 14ct (9.5g); vintage garnet dress ring in 14ct gold (tot wt 3.97g), stone needs repolishing; vintage small (possibly children's?) dress ring in 18ct gold (2.46g), features recessed one ruby with a diamond at the sides (one diamond missing); knot-style earrings in 9ct gold (.96g), missing push-on securing clips; one small heart-shaped earring in 9ct gold (.22g) featuring three small diamonds, missing push-on securing clip; other damaged items in 9ct gold (3.92g). *Good - fine.* (lot)

\$550



1498\*

**Gold bracelet**, 9ct, safety chain, heart shaped clasp (27.97g). *Extremely fine, beautifully made.*

\$400

1499

**Gold bracelet**, 20.8cm, 9ct, 14.9g, engraved 'Success'. *Extremely fine.*

\$350



1500\*

**Gold bracelet**, 18cm, herringbone style, 9ct (11.7g). *Extremely fine.*

\$250



part

1501\*

**Wishbone brooch**, in 9ct gold (1.45g), features cut-out map of Australia in V of bone; book mark in sterling silver and at the top edge is an enamel map of Australia with coat of arms in centre; Sydney souvenir bracelet in gilt and enamel, features six linked panels featuring Harbour Bridge, Bradley's Head, Sydney Town Hall, Bondi Beach, Manly Ocean Swimming Pool, and Anzac Memorial Hyde Park (The Shrine). *Very fine - extremely fine.* (3)

\$70



1502\*

**Pearl necklace**, 62cm, 9ct gold link. *Very attractive, like new, extremely fine.*

\$100

1503

**Antique brooch**, in silver marked for Chester 1913 by maker, 'M&J', features the sentimental symbols as found on Mizpah brooches, namely a cross (faith), an anchor (hope) and a heart (charity), and at sides is a gold star inside a circle of ship's rope, on back of brooch bar inscribed, 'N.E.C.T. July 19??'. *Very fine.*

\$50

1504

**Silver charm bracelet**, featuring 27 charms from around the world, mostly in silver and some with enamel, also 4 base metal coins, all on a silver bracelet with padlock style clasp (tot wt 100g). *Fine - very fine.*

\$70

1505

**Antique Victorian era ladies belt**, in EPNS silver plated and hallmarked, 'plume EPNS crown' (Atkin Bros, Sheffield) (approx 60cm), voided floral pattern. *Very fine.*

\$50



1506\*

**Earrings**, vintage, Elizabeth Reimer Arkansas, red stones in-set silver surround. *Very fine.* (2)

\$50



1507\*

**Gold ring**, blue stone, 2 rows of small diamonds, size 'R', 9ct. *Extremely fine.*

\$450

1508

**Gold ring**, 9ct, opal, 'K' size ring. *Extremely fine.*

\$150



1509\*  
**Gold and platinum diamond ring**, 18ct, 8+1 setting, approx .6ct, 2.6g. *Extremely fine.*

\$80

1510  
**Ring**, Louis Vuitton, steel, size 'T'. *Very fine.*

\$60



1511\*  
**Diamond dress ring**, in 9ct gold (tot wt 3.09g), belt design across the top decorated with 29 brilliant cut small diamonds with a recessed central panel of twelve brilliant cut diamonds across the top (combined tot of approx 0.60ct). *Extremely fine.*

\$200



1512\*  
**Diamond dress ring**, in 10ct gold (tot wt 4.23g), with a recessed central panel of twelve brilliant cut diamonds across the top (each approx 4mm; combined tot of approx 0.50ct). *Good very fine.*

\$180



1513\*  
**Blue sapphire and diamond dress ring**, in 9ct gold (tot wt 5.54g), with a cushion cut sapphire (10x10mm), set into a raised, yellow gold bezel with a lower tier bezel decorated with small diamonds, the bezel rotated to 45 degrees and around the base decorated with scroll work. *Good very fine.*

\$150



1514\*  
**Diamond and sapphire leopard dress ring**, in 9ct gold (tot wt 2.65g), with an offset yellow gold band in the shape of a rhodium plated leopard set with coat of diamonds and dark blue/black sapphires, with yellow gold face, ears and paws and dark blue/black sapphire eyes. *Extremely fine.*

\$150



1515\*  
**Ruby and diamond dress ring**, in 18ct white gold (tot wt 3.69g), oval ruby (approx 2.5ct), with border of fourteen claw set small diamonds. *Centre stone wiped on top and with some small nicks around edge, otherwise very fine.*

\$140



1516\*  
**White sapphire and diamond dress ring**, in 9ct gold (tot wt 4.61g), with an oval cut sapphire (9x11mm), set into a yellow gold bezel with a diamond decorated rhodium plated border. *Very fine.*

\$100



1517\*  
**White sapphire dress ring**, in 9ct gold (tot wt 3.43g), princess cut white sapphire (?) (9x9mm; approx 4ct), claw set on a plain yellow gold band. *Stone loose, needs claws tightened, otherwise extremely fine.*

\$70



1518\*  
**Citrine and diamond dress ring**, in 10ct gold (tot wt 3.27g), with a pear cut citrine (6x9mm), claw set with two small diamonds in a decorative panel on each shank. *Extremely fine.*

\$100



1519\*  
**Aquamarine and diamond dress ring**, in 10ct gold (tot wt 2.58g), with an oval cut aquamarine (3.5x5.5mm), claw set at 45 degrees with a split twist design shank with nine small diamonds in a panel on each side. *Extremely fine.*

\$90



1520\*  
**Aquamarine and diamond dress ring**, in 9ct gold (tot wt 1.88g), with an emerald cut aquamarine (8x10mm), claw set with a small diamond in a decorative panel on each shank. *Good very fine.*

\$80



1521\*

**Amethyst and diamond dress ring**, in 9ct gold (tot wt 2.56g), with a cushion cut amethyst (8x8mm), set into a raised, yellow gold bezel with a lower tier bezel decorated with small diamonds. *Very fine.*

\$80



1522\*

**Amethyst and diamond dress ring**, in 10ct gold (tot wt 1.57g), with an emerald cut amethyst (6x8mm), claw set with a small diamond on each shank. *Good very fine.*

\$80



1523\*

**Peridot and diamond dress ring**, in 10ct gold (tot wt 1.97g), with a round brilliant cut peridot (6mm), claw set with twist design shank with a small diamond in a decorative panel on each side. *Extremely fine.*

\$80

1524

**Opals**, two attractive doublets; vintage Wedgwood cobalt blue jasperware heart shaped box commemorating QEII Silver Jubilee 1977. *Fine - very fine.* (3)

\$80

1525

**Costume jewellery**, includes gold earrings each featuring three blue sapphires; gold earrings each with a floral Wedgwood centrepiece, in Wedgwood case; gold disc earrings each filled with crushed natural diamonds, in case of issue (one needs to be spot soldered on loose clip); gold dress rings, one with a feature of natural abalone shell (with original tag attached), another with small black pearls around a citrine, the last in the shape of a rose with a green centre stone. *Extremely fine.* (3 + 3 pairs)

\$50

All reference to gold indicates the colour of the metal.

1526

**Costume jewellery**, includes an impressive diamond and emerald-like necklace (51cm) with a matching floral spray brooch; matching ornamental diamond-like pair of brooches; also natural round bead garnet necklace (43cm). *The first in plastic, decorated case with central feature of a heart, extremely fine.* (5 pieces)

\$50



part

1527\*

**Gent's gold half hunter pocket watch**, by A.W.Waltham & Co, in 18ct gold (tot wt 93.08g), white dial with black Roman numerals and gold hands, subsidiary second dial with Arabic numerals, works cover inscribed, 'Frank Elliott/from Sarah/17Feby 07'; also pendant in 9ct gold (22mm; 1.47g), features a rose gold band and inside is a cut-out map of Australia, and inscribed, 'Australia', the reverse inscribed with stylised initials, 'GE'; handcrafted shield style fob in 9ct gold (23x35mm; 2.82g), inscribed on central shield with initials, 'GE'; handcrafted shield style fob in silver (24x33mm), inscribed on central shield, 'G.Elliott', reverse inscribed, 'Hartley/E.H.D./1906'; handcrafted cross (22x26mm), in centre of obverse inscribed initials, 'G.E', reverse inscribed, 'K.S.P.S. Rugby/1909'; handcrafted prize fob in 9ct gold (23x33mm; 4.08g), in centre of obverse inscribed initials, 'IE', reverse inscribed, 'Presented By/ Nicholson/ & Co Ltd/Sydney/For Vocal Solo/Won By/I M Elliott'. *The watch appears to be in working order; very fine.* (6)

\$900

A nice collection to the Elliott family, father, Frank, and children, George and Isabel. K.S.P.S. is Kogarah Senior Public School. Hartley E.H.D. medals were issued to about 40 school boys from Lithgow who took part in Eight-Hour Demonstration displays in 1906. The presentations were made at the Lithgow Oddfellows' Hall on 6 November in front of a crowd of over 1,200 people. Two teachers, Mr Lewis and Mr Cookson, received gold medals and the school boys received a similar medal in silver.



lot 1528



part

1528\*

**Gent's full hunter pocket watch**, in silver, key wind (no key with lot), white dial with black Roman numerals, second dial with Arabic numerals, dial marked, 'Lancashire Watch Co Ltd/London & Prescot', machine turned case hallmarked for Chester 1901 by T.P.G (Thomas Peter Hewitt); ladies full hunter pocket watch, in silver, white dial with gold decorative pattern around edge and blue Arabic numerals, gold hands, decoratively engraved case hallmarked with three bears and 0.935 as was used for Swiss made watches for the English market prior to 1907, shield on lid inscribed, 'MC' (Maud Corbould). *The first with cracked dial glass and hinge on lid broken, the second missing dial glass and suspension ring, working order unknown, otherwise very fine.* (2)

\$100

Maud Corbould full name Alice Maud Mary Corbould nee Eversleigh was born at Yass, NSW and named after the second daughter of Queen Victoria. Her father Robert Eversleigh was the Gold Commissioner for NSW and Mining Engineer. She was married on 26 January 1883 by Rev Dr Fullerton to Ernest Edward Corbould and was the mother of Gordon Clarence Corbould, a Australian submariner lost on the submarine AE1 when it disappeared without trace in WWI.

See lots 1495 and 5074 for other items to Corbould family.

1529

**Gent's pocketwatch**, c1990s, Jacques du Manoir, Swiss made, steel and gold coloured case (48mm), quartz movement, white dial with date and black Arabic numerals, sweep seconds hand, gold plated fob chain attached. *As new in box, in working condition but not checked for accuracy.*

\$50

1530

**Gent's wristwatches**, Omega, quartz, head only (35mm), rolled gold top with stainless steel back, silvered metal dial with gold baton numerals and hands, sweep seconds hand, date at 3 o'clock; Wittnauer (Geneve) (35mm), automatic day date, rolled gold top and stainless steel back, silvered metal dial with gold baton numerals and hands, sweep seconds hand, day and date at 3 o'clock, rolled gold and stainless steel stretchable bracelet. *The first not working (probably needs a new battery), the second in running order but not tested for accuracy, good condition.* (2)

\$200



1531\*

**Gent's wristwatch**, Omega, c1970s, gold top (33mm), stainless steel back, automatic, sweep seconds hand, gold coloured dial with gold coloured baton numerals and hands, date window at 3 o'clock, original Omega rolled gold plated bracelet, 'Seamaster'. *In working order but not tested for accuracy, presentation 40 years service from Commonwealth Banking Corporation, engraved on watch back, otherwise very fine, in an Omega leatherette box.*

\$180

1532

**Gent's wristwatches**, Omega, c1970s, gold top and stainless steel, both with stainless steel back, automatic, sweep seconds hand, one with gold coloured dial with gold coloured baton numerals and hands, 'Seamaster De Ville', other with stainless steel baton numerals 'Geneve' with date window at 3 o'clock, original Omega first with rolled gold plated bracelet. *Both in working order but not tested for accuracy, fine.* (2)

\$150

1533

**Ladies wristwatches**, Omega de Ville, c1990s, stainless steel case (26x22mm), black face with baton numerals at compass points; Seiko quartz, c1990s, gold plated with stainless steel back, integral bracelet, case (25x9mm), gold face and hands with black baton numerals at compass points. *Not working, very fine.* (2)

\$50

1534

**Ladies pendant watches**, all in gold coloured cases, includes a Calibri quartz with long gold plated suspension chain; Seiko manual wind with long gold plated suspension chain; Ascot Sky Master, heart shaped in machine turned case, manual wind with second hand. *The first in case of issue with original certificate, working order unknown, the other two appear to be working, very fine - extremely fine.* (3)

\$50

1535

**German carriage clock**, (c.mid-20th century), Schatz, in brass case with glass panels, (250mm x 155mm). *Very fine with key and movement intact.*

\$100

1536

**Carriage clock**, cast in gilt metal (8.5cm high + lift-up handle), glass top to view spinning wheel, white dial with black Roman numerals and hands, at each corner a half naked woman, opening back door missing hinge; vintage desk pen and ink stand in stained timber (9.5x5.4cm), with two glass inkwells, missing lids and with a dip-style pen, this with plastic handle and all fittings rusty; a circular, machine turned timber stand (17.5cm), with machine hollowed section in middle for fitting a trophy or small statue. *The clock not working, fine - very fine.* (3)

\$50

1537

**Silver vesta case**, plain and chased design (45x35mm), ring top suspension, hallmark for Chester 1895, maker W.N. (William Neale). *Firm hinge, very fine.*

\$50



1538\*

**Silver snuff box**, c1850s, Continental silver (55.5g), probably of Russian make, stamped '84' engine turned and hand engraved (62x40x15mm), by 'V.H.', scenes all around, possibly one of Peter the Great (St Petersburg). *Dent in front, otherwise fine.*

\$500

1539

**Vintage vesta case**, with a few wax matches inside, made in nickel silver, around the centre is leather covered and on one side is a coloured photo of the arms of Southend-on-Sea and above is the name Westcliff-on-Sea, one of its suburbs; plated steel machine turned cigarette case by Ste-Vel; scarce vintage fountain pen in rolled gold, c1920s, marked "Swan Pen" Mabie Todd & Co New York, Made in U.S.A., Patent Jan 19, 1915; one nacre cufflink; also vintage miniature books, includes *The Story of Robert Burns and the Land of Burns* by The Rev. J.C.Carrick, undated, (6x8.5cm), 160pp; *Moments with Robert Burns*, London. Humphrey Milford, undated (6.9x10cm), unnumbered pages, approx 60pp; *Gems from Lorna Doone* by R.D.Blackmore, undated, (6x8.8cm), 127pp; *Maurine* by Ella Wheeler Wolcox, undated (6x9.4cm), 230pp, inside fly page marked, 'Ruth, May 29th 1918'; *Spons' Tables and Memoranda for Engineers* by J.T.Hurst, 12th edition, 1902, (4.8x6.8cm), 278pp, title page stamped 'F McKeahnie/ Neer 70 Hay' and on other side is written, 'F McKeahnie/Enmore'. *The last book with one corner of cover missing, the second last with some foxing the rest with only an occasional spot of foxing, fine - very fine.* (9)

\$80

Frank McKeahnie was the son of a prominent, pioneering pastoralist from 'Aberfoyle' at Yarra near Goulburn, NSW. After leaving school he was apprenticed to the engineering trade at Goulburn. In 1925, he purchased, Sydney Machine Co, based at Botany Road, Waterloo, not far from Mascot Aerodrome, as it was called at that time. Frank was a qualified pilot with the NSW Section of the Australian Aero Club.

In Jan 1932 Frank McKeahnie was elected as a member of the committee of the Australian Aero Club (NSW). In the same year he presented an Essex truck, used for towing aeroplanes about the 'drome, to the Aero Club (NSW). He was also president of the air tourney committee for the Lady of the Air Tourney held at Hargrave Park at Liverpool, NSW, an airfield which opened in 1930. It was closed in about 1945.

In November 1934 Frank McKeahnie once again was the Aero Club's representative when three aircraft, three pilots and an instructor were sent from Sydney to Bombala to assist in celebrations to greet the King's son, HRH Prince Henry, when he visited the area. In 1935 he was elected Vice-Chairman of the Aero Club. Vendor advises that Frank McKeahnie piloted one of the planes that flew over the Sydney Harbour Bridge on its official opening day but this has not been confirmed.

Other items belonging to Frank McKeahnie were auctioned in Noble Numismatics Sale 113 (lots 863, 870, and 891).



part

1540\*

**Antique silver**, includes silver fruit knife with fold-out blade hallmarked for Birmingham 1863 by H&T (Hilliard & Thomason); silver thimble hallmarked for Birmingham 1900 by W&H (?); condiment spoon in EPNS hallmarked for E.M.Dickinson (Sheffield ?); small salt spoon in EPNS; silver ladies brooch featuring a voided design of three camels being led to the right by a guide and after the last camel is a tree, back stamped Palestine 900 (WWI souvenir). *Fine - very fine.* (5)

\$100

1541

**Purves family crest metal die**, impressed on a steel block (26x22x9.5mm), in a mirror image of the Purves clan crest, the sun rising out of the clouds and below the motto, 'Clarior e Tenebris' (Light out of Darkness), on the base of the block are the letters, 'EST' E starts right at edge so maybe 'TEST' and what appears to be a large E; a white metal impression (22mm) of a 'lion passant' on a circular brass base (38mm), maybe a test strike or a wax seal stamp; a brass name plate (100x31mm), with purpose made hole in middle near bottom edge, named, 'Charles' at left and 'Shard Esq' at right; a tortoise shell serviette ring, the top in the shape of a shield and affixed in the middle is another matching shaped shield in silver and inscribed thereon the monogram initials, 'RGS' (Robert Gemmel Smith); miniature tankard, on the side is inscribed, 'Jus/A/Nip', base marked, 'Perfection E.P.A.I.' (electro plated - triple plated) . *Fine - very fine.* (5)

\$100

Ex the Estate of Eileen Allison Gemmell Smith (1922-2015), grand daughter of Charles Shard of Woollahra and James Liddell Purves of Melbourne. Eileen married Flt Lieut Robert Gemmel Smith RAF at All Saints' Church, Woollahra on 22 August 1945.

Vendor believes the tankard to have been purchased by James Liddell Purves at the 1880-81 Melbourne International Exhibition from the stand of the firm, Simpson Hall Miller & Co of Wallingford, Connecticut, USA, users of the Perfection trade mark.



1542\*

**Tastevin**, wine tasting bowl in silver (93x26mm; 110g), hallmarked for London 1917, circular bowl with waves and small bubbles pattern, ring handle, impressed in underside of base is image of the reverse of an English hammered shilling. *Needs cleaning, otherwise fine.*

\$100

1543

**Vintage stanhope urn**, a miniature (15mm high with legs x 13mm wide) carved timber urn with three wire prong legs, in the side is a stanho-scope featuring views of Southern Ireland; ivory plaque (45x42mm), painted with image of bird seated on a branch (possibly an Ashy-Headed Laughing Thrush). *Extremely fine.* (2)

\$100

Ex the Estate of Eileen Allison Gemmell Smith.

Vendor advises that these items were purchased by James Liddell Purves at the 1880-81 Melbourne International Exhibition.

1544

**Antique napkin rings**, set of two, in sterling silver, hallmarked for London 1888 by maker, Willam Evans. *In original, fitted, leather, satin and velvet lined, hinged-lid box.* (set of 2)

\$50



1545\*

**Parasol/riding crop mounts**, in silver and gilt, features design of a stallion with his neck over a cast mare, probably by Christofle, one with gold plated mane on the mare and one without. *Very fine.* (2)

\$100

Ex the Estate of Eileen Allison Gemmell Smith.

Vendor advises that they were most likely purchased by James Liddell Purves from the stand of goldsmiths and silversmiths, Christofle, at the 1880-81 Melbourne International Exhibition.

1546

**Commemorative serving tray**, in EPNS, machine turned recessed top and in the plain centre is fitted the enamel and gilt badge of MS Coy (Melbourne Steamship Coy), around this is inscribed, at the top, 'Presented To Mr Neil Allan/on the Event of his Marriage', and at the bottom, 'By The Engineer Officer/M.V.Duntroon. 1941.' *Good very fine.*

\$100

A connection cannot be confirmed but Lilian May (nee Malone), age 34, wife of Neil Allan, died at Royal Hospital for Women at Paddington, NSW on 5 June 1942.

M V Duntroon was a passenger ship built for the Melbourne Steamship Company and entered service in 1939. She was requisitioned by the Australian Army and served as a troopship from 1942 to 1949. She had an unfortunate incident in November 1940 in Port Phillip Bay when she collided with and sank the auxiliary minesweeper, HMAS Goorangai, the first WWII shipping loss for the RAN. Dogged by bad luck, she had a second collision in November 1943, sinking the American destroyer, USS Perkins off the north coast of New Guinea. She continued in service with the Army until 1946 and was then chartered by the RAN for transport duties with the British Commonwealth Occupation Force. The Duntroon was sold by its owners in 1961 and renamed Tong Hoo and again sold in 1966 and renamed Lydia. She was laid up in 1967 and later scrapped in 1973. The ship's bell is held at the Royal Military College, Duntroon, Canberra, as part of a memorial to RMC Graduates killed on active service.

1547

**Souvenir condiment spoons**, from various locations, all with enamelled highlight at handle end (9); another but plain; souvenir metal and enamel book marks (2); another with N on top and another plain; tie clip; small silver (?) star brooch; gilt and enamel on silver floral pendant with 70cm silver-like chain; hollow nickel bar pendant; souvenir square mesh purse (56mm) with inset enamel shield for Golden Gate Bridge, S.F., California; Pontiac enamel and leather key ring; single pink abalone shell; jeweller's loupe, fold-out nickel 10X pocket magnifier by Carton; another similar but in nickel and plastic by Olif. *Fine - very fine.* (24)

\$50

1548

**Souvenir teaspoons and sugar spoons**, by Stuart (40) with enamelled disc at handle end, mostly Australian locations, others without enamelled disc for Sydney featuring Harbour Bridge (4), Royal Visit 1954 (2), D.J's 125th Year (3), also others with figures at handle end (4). *Mostly very fine - extremely fine.* (53)

\$50



1549

**Souvenir teaspoons and sugar spoons**, mostly with enamelled disc at handle end (62), various other non-souvenir small spoons including condiment types for normal usage (24). *Stored in a hand painted and decorated timber hinged-lid box, very good - extremely fine.* (86)

\$50

1550

**Vintage napkin ring set of four**, in EPNS, in original leather, satin and velvet lined, hinged-lid box. *Very fine.* (set of 4)

\$50

1551

**Novelty napkin rings**, all in EPNS, includes one with a cricket bat at one side and a wicket on the opposite side; one with a small boy at side; one decorated with a bird in a floral wreath and the ring resting on a horse-drawn wagon; also another oval style with an enamelled cross symbol on side. *Very fine.* (4)

\$50

1552

**Vintage eyeglasses**, gold filled oval frame glasses (John Lennon style), in hard leather case marked A.J.Higgs & Barker, 5&6 T&G Bldg, 201 Elizabeth St; another but rimless style and irregular cut shape, in case marked D.J.Hart, Optometrist, Ashfield & Kingsgrove, both pairs c1940s vintage. *Very fine.* (2)

\$50



1553\*

**Kangaroo ornament**, late 19th century, in silver (50.5mm high x 32mm wide; 47.15g), by William Drummond & Co of Western Australia, kangaroo resting on tail, bottom of feet stamped in cartouche, 'SILVER' on left foot and 'DRUMMOND' on right. *Needs cleaning, otherwise very fine and scarce.*

\$200

Ex the Estate of Eileen Allison Gemmill Smith.

1554

**Whale's tooth**, early twentieth century, 20cm long (1kg), sperm whale, in leather pouch, with etching guide book (Scrimshaw), by Carson I.A.Ritchie, published by Sterling; serviette rings, fine bone china, others in brass and non precious metals, all in felt lined and partitioned case (28); photograph, framed, 24x19cm photo, Historic vessel "Krait", WWII wartime raider, September 1943. *Good fine - extremely fine.* (30)

\$100



1555

**Scrimshaw powder horn**, circa 1830, engraved 'James Wilson' 'Color Serg't' 'of the Grenadier Company' '29th Reg't', ornately engraved all over with floral emblems, a large bird with 'The Wandra' above, a lady holding a rose with 'Forget Me Not' above, (440mm long). *Very fine with a few losses, scarce.*

\$1,200

A Corporal James Wilson, Grenadier Company is listed in Sydney, New South Wales in 1832/33.

1556

**Scrimshaw powder horn**, circa 1833, engraved near the point 'New South Wales 1833', cross-hatched design below, fitted with a brass spout and mounted with brass lion mask suspension loops, (390mm long). *Very fine with minor losses, a rare early example.*

\$1,200

Ex Graham and Elizabeth Cocks Collection.



1557\*

**Scrimshaw powder horn**, circa 1840, ornately engraved to one side with a fashionable lady holding a songbird, floral basket above, garlands around, mounted with brass loops for suspension, plugged with a timber cover with painted star decoration, (350mm long). *Extremely fine with high quality engraving.*

\$1,200



1558\*

**Scrimshaw powder horn**, circa 1851, deeply engraved to one side 'Rule Britannia', a sailor in uniform holding a British ensign, 'Souvenir' 'Memento Mori' 'Tempus Fugit' 'November 1851' 'Mr Donell', beneath a large British warship under sail, (400mm long), suspended for mounting. *Extremely fine with very high quality engraving, scarce.*

\$2,000

1559

**India**, ivory bracelet with four elephants and flora carved on the outside; long boat in phoenix form with three rowers (Chinese?). *Very fine*. (2)

\$100

1560

**Silver bracelet**, India or Afghanistan, early 20th century, silver wire covered with alternating silver beads and decorated cylinders, clasp intact, (150mm long). *Extremely fine*.

\$100

1561

**Tibet**, silver scroll weights (230x22mm) (2); Chinese, silver zodiac ingot (90x50mm). *Extremely fine*. (3).

\$90

1562

**Burma**, standard weights of the Burmese kings, Beast series, opium weights, period D issued 19th century, weights of 157.12, 79.37, 75.81, 16.04, 15.01, 8.57, 6.75, 4.29, 4.08 g, all on square bases all are of the Hantha bird, corresponding to ten, five, one (2), half, three eighths and quarter (2) kyats, (Robinson and Shaw, *The Coins and Banknotes of Burma*, Chapter 5, cf.pp.31-4 [figure 12, 13], cf.Gear [Pl.29 and 53-4], cf.M.2831, cf.2841); together with four in tin/lead metal, 67.52, 79.04, 81.38 and 166.48 g, these are the lead pieces made to make cast wax models from, (see p.33 Robinson and Shaw). *Fine - extremely fine, lead models are rare*. (13)

\$150

Ex Patrick J.O'Rourke Collection.



part

1563\*

**Burma**, standard weights of the Burmese kings, Beast series, opium weights, period D issued 19th century, weights of 300, 163.68 (illustrated), 76.86, 32.03, 32.75, 16.89, 8.13 g, all on square bases several are of the Hantha bird and Ziwazo bird (illustrated), corresponding to twenty, ten, five, two (2), one and half kyats, (Robinson and Shaw, *The Coins and Banknotes of Burma*, Chapter 5, cf.pp.31-4 [figure 12, 13], cf.Gear [Pl.29 and 53-4], cf.M.2831, cf.2841). *Very fine - extremely fine, some scarce*. (7)

\$150

Ex Patrick J.O'Rourke Collection.

1564

**Chinese "Opium" Scales**, these are also a type of steelyard scales, described below, pan diameter 35mm, as stored with a wooden box in the shape of a fish or violin, lot includes a weight for counterbalance; another similar 47mm diameter pan of similar shape and style. *Finec -very fine and both rare being intact*. (2)

\$150

Ex Patrick J.O'Rourke Collection.

They have one pan suspended from an unequal ivory arm, and a brass, lead or metal weight for counterbalance. A load is put on the pan and then the weight is moved a long the arm until the scale is balanced. These scales are usually found inside a wooden box, with the distinctive shape of a fish or violin (as in the above examples). These scales originated in China and were first mentioned in western literature in the 17th century, as Dotchin scales. They were used to weigh silver, gold, gems, and medicinal powders.



part

1565\*

**Primitive Money**, an interesting group including manillas (2) from West Africa, Atoni type (p.211 Opitz); partial coiled manilla (p.215 Opitz); boars tusks (2) claimed to be from Solomon Islands (p.87 Opitz); shark teeth (5) attached to a silver type chain; a small early stage tusk of a boar with metal end cover; South East Asia, necklace with hand woven rings, attached are twelve (12) India silver rupees of various dates 1840-1944 all are attached with silver ring support to the necklace together with a ornate 58mm square plaque with scroll decorations (illustrated). *Very fine, mostly scarce*. (lot)

\$200

Ex Patrick J.O'Rourke Collection.

1566

**Primitive money**, Africa, anklet money or baoule, a large cast semi circular raised central rim with decoration on both faces, internally it is hollow and is used as money, external diameter 8.5 cm., overall height 3.7 cm, internal diameter 4.5-5 cm, weight 430 g; (Opitz p.276-277 for similar illustrations); a bracelet with incised lines on the outer rim, 7.4cm diameter and a cast bronze rind with attached man on horse, total height 6.3cm, the last two possibly from Benin. *Very fine and very scarce.* (3)

\$100

Traditionally, these copper 'anklet' forms were recognized and used as currency for rare but major transactions. These anklets were forged and hammered from a single copper ingot.



part

1567

**Primitive money**, Nigeria, Congo and West Africa (Ivory Coast), manillas, anklets and collars, as circular bars with twisted outer circles, ornate nearly complete round rings, making up manillas etc., 60-65mm diameter. This extraordinary group of eight were recovered from the wreck of the English Schooner 'Douro' sunk off the Isles of Scilly in the United Kingdom on April 5, 1882 and recovered in 1995, (Opitz p.209-213, cf.Quiggin Plate 1 No.2, 5 etc). *Very fine.* (8)

\$300

Ex Barry McGown Scott Collection, one example from Salamanca Rare Coins, May 19, 2006.

All this lot come in a folder of research papers on manillas, together with certificates of signed authenticity by the salvors and various photocopied articles and papers about manillas and story of the "Douro".

Manillas were both decorative and ritualistic, playing a role in ceremonial customary practices connected with marriage and burial. A twisted or snake manilla signified the completion of a bride price transaction (Jeffreys, quoted in Johansson, p23). Dowry was contracted in terms of manillas as well as other payments, for example of goats, dogs, cloth and palm-oil. It is possible that these well and finely made manillas were what Talbot, (in Grey, 'Manillas') refers to as 'abi' or Prince manillas. They provided both stored wealth and symbols of status.

1569\*

**Africa or maybe South America**, manilla-like bronze/brass bracelets and large rings, possibly used as primitive money, includes similar examples to Opitz book, Timor silver bracelet (p.287, 286 illust.), these like normal bracelets but with protrusions from the outer edge, weight 330 grams diam 135mm (illustrated); another 300 grams, 125mm diam; another almost joined ends 320 grams, diam 123mm; another similar ornamental edges of various designs weight 160 grams diam 75mm.; brass/bronze rings (3, 2 need conservation) all with intricate design on the whole surface, each 72mm diam. weights vary from 220-260 grams. *Very fine.* (7)

\$200

Ex Barry McGown Scott Collection, previously from Noble Numismatics Sale 82 (lot 1079).



part

1568

**Primitive money**, Nigeria, Congo and West Africa (Ivory Coast), manillas, anklets and collars, as circular bars with twisted outer circles, ornate complete round rings, making up legbands etc., 60-65mm diameter. This extraordinary pair were recovered from the wreck of the English Schooner 'Douro' sunk of the Isles of Scilly in the United Kingdom on April 5, 1882 and recovered in 1995, (Opitz p.201, cf.Quiggin Plate 1 No.2, 5 etc). *Very fine.* (2)

\$100

Ex Barry McGown Scott Collection.

This pair come in a folder of research papers on manillas, together with certificate of signed authenticity by the salvors and various photocopied articles and papers about manillas and "slave trade bracelets".

1570\*

**Africa or maybe South America**, manilla-like bronze/brass bracelets and large rings, possibly used as primitive money, includes similar examples to Opitz Nigeria Bidda Tribe (p.277, 281 illust.), weight 640 grams diam 125mm (illustrated); another 295 grams, 110mm diam; another similar with edge grooving sloped to the right, weight 275 grams, 120mm.; brass/bronze rings (5) one with edge grooving each about 90mm diameter, weights vary from 80-235 grams. *Very fine.* (8)

\$200

Ex Barry McGown Scott Collection, previously from Noble Numismatics Sale 82 (lot 1078).

1571

**Jewellery**, tribal pieces, Cameroon, 20th century, brass and copper trade necklace, beaded with copper bells and strands; India, base silver necklace of beaded form; Middle East, base silver finger ring of conical form; Africa, silver finger ring of double triangular form with incised design. *Very fine.* (4)

\$80



1572\*

**South East Asia**, primitive money, as an inscribed silver bracelet 73mm diameter, 8mm thick, 12mm wide in middle opening at ends to 18mm, (205 g), inscribed edge ornamentation lines, cross hatching etc. *Very fine and rare.*

\$150

Ex Patrick J.O'Rourke Collection.

1573

**Malaysia**, primitive tin conical ingot cast for use as money, probably Malacca or Pahang Sultanate, from the 13th to 19th century, in the shape of half a large ball, (1670 g), 94mm diameter and 45mm high, this version is quite uncommon, (cf. Mitchiner 3069-3071). *Very fine and very scarce for an ingot this large.*

\$100

Ex Patrick J.O'Rourke Collection.

1574

**Malaysia**, Pahang, round hat or mound shaped tin ingot 36mm (59.48g), plain without markings, c17th century. *Fine.*

\$50

1575

**Primitive money**, cowrie shell necklace from New Guinea and Melanisia, a large string macrame necklace with several hundred cowrie shells attached with at least eight bunches of cowrie shell added as an appendage, together with several hundred loose cowrie shells cut with tops removed. *Fine - very fine.* (lot)

\$150

Ex Patrick J.O'Rourke Collection.



1576\*

**Primitive money**, Melanisia - New Guinea, tufi macrame traditional seashell (necklace) or neck apparel (as a mask) with attachments of two boar tusks, 14 sea shells, two cowrie shells as eyes, beads supporting sea shells and woven fabric to complete the arrangement. *Very fine, rare.*

\$150

Ex Patrick J.O'Rourke Collection.



1577\*

**Vintage small forest axe tomahawk**, c1800s, head with impressed stamp 'F/500', of the style of Gransfors British trade axe tomahawk, with vintage timber flat handle (63cm long and 3.8cm wide). *Very fine.*

\$100

Before the arrival of Europeans to the Americas, native Indians used stone axes. English and Scottish settlers to James Town, Virginia in 1607 brought the axes to America and soon they became very useful for trading with the local Indians and soon they came into permanent use with them and became known as tomahawks.

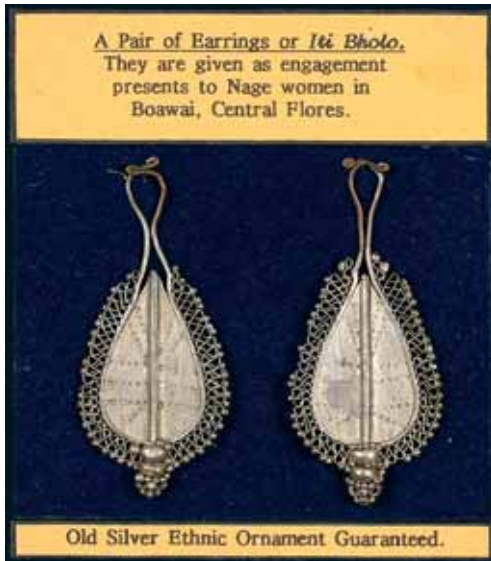


1578\*

**Vintage small forest axe tomahawk**, c1800s, of the style of Gransfors British trade axe tomahawk, with vintage timber flat handle (45cm long and 3cm wide), with crude hole near end for carrying cord. *Some pitting, otherwise fine.*

\$100

See footnote for previous lot.



1579\*  
**Indonesia**, Central Flores, jewellery, mounted on boards and described, a pair of earrings or *Iti Bholo* (one illustrated), given as engagement presents to Nage women in Boawai in Central Flores; also (3) silver alloy (*kwari*) charms (one illustrated), worn as body ornaments in ceremonies. *Extremely fine.* (5)

\$150

Ex Patrick J.O'Rourke Collection.



1580\*  
**China**, Song Dynasty, 960-1279 A.D., off-white celadon glaze bowl, of tapered form, scalloped edge, swirling cloud decoration incised into bowl, basic mark to base, (170mm wide). *Extremely fine with no chips or cracks, rare.*

\$3,500



1581\*  
**China**, Kangxi period, (1662-1772), blue and white plate, possibly made in Jingdezhen, decorated with four-toed dragons and floral decorations to the rim, (240mm wide). *A few light chips to the rim, otherwise nearly extremely fine and rare.*

\$1,000



1582\*  
**China**, late Qing Dynasty, blue glazed bowl, of squat form with flared rim, interior with white glaze, (130mm wide). *Extremely fine with no chips or cracks, scarce.*

\$1,500

1583  
**China**, late Qing Dynasty, glazed ceramic pen holder, circular form with straight sides, decorated in blue and white with warriors and scholars, Chinese characters around, signed at base, (185mm wide, 140mm high). *Extremely fine with no chips or cracks.*

\$300



1584\*  
**China**, c.mid-19th century, cloisonne enamel bowl of shallow oval form, decorated with scrolling dragons chasing sacred flaming pearls above waves set in brightly coloured enamels within a fine black cloud effect ground, decorated inside and underneath with attractive blue enamel, on wooden base, (290mm wide). *Extremely fine and attractive.*

\$700

1585

**China**, early 20th century, bronze cloisonne enamel vase, of fine baluster form, reddish brown field with blue flower decoration, (230mm tall), with custom wooden base. *Very fine.*

\$150

1586

**China**, late 19th century, bronze tripod censer, in Qing dynasty style, floral decorations around, anthropomorphic handles to sides, intricately carved pierced wooden lid with jade cabochon top, on custom carved wooden base, (150mm high). *Extremely fine.*

\$500

1587

**China**, seated laughing Buddha, (late 19th-early 20th century), solid carved timber with bone and shell inlaid eyes and teeth, 275mm high, 160mm wide. *Some cracks, otherwise very fine.*

\$100

Ex UK auction.

1588

**China**, vintage Chinese porcelain figures in original box together with a small porcelain top jewel box. *As new.* (lot)

\$70

1589

**China**, Qing dynasty, jade archer's ring, cylindrical of mottled white green jade, (30mm diameter). *Extremely fine.*

\$200

1590

**China**, 20th century, jade fortune amulet depicting a flying bat clasping a peanut, of fine milky green jade, pierced for suspension, (30mm wide). *Extremely fine.*

\$200



1591\*

**China**, 20th century, jade figurine of a sleeping child, in light brown and cream tones, suspended on a cord with a red agate sphere attachment, (50mm long). *Extremely fine.*

\$300

1592

**China**, 20th century, Hetian jade carving of a recumbent dog facing backwards, suspended on a cord with a green jade sphere attachment, (28mm long). *Extremely fine and scarce.*

\$650



1593\*

**China**, carved red agate jade bangle, (20th century), deep red colour, 75mm wide. *Extremely fine, boxed.*

\$2,000



1594\*

**China**, 20th century, possibly Ye Zhongshan master, snuff bottle, of curved rectangular form, interior decorated with a scene of a scholar and attendants, Chinese characters to back, top spoon sealed with a pink stone cabochon, (85mm high). *Extremely fine.*

\$1,500



1595\*

**China**, 20th century, snuff bottle, of cylindrical form, carved with overlapping leaf or feather decoration in brown and white colours, topped with a red cabochon and spoon, (75mm high). *Extremely fine.*

\$400



1597\*

**China**, Canton enamel snuff bottle, (c.20th century), of squat form with painted European subjects, depicting figures in period costumes surrounded by scrolling lotus vines on a yellow ground, Qianlong mark, height 70mm; another, similar style, height 70mm. *Extremely fine.* (2)

\$500



1596\*

**China**, 20th century, snuff bottle, of square form, decorated with enameled scenes of water birds and floral designs, brass spoon topped with a high coral cabochon, signed at base, (95mm high). *Extremely fine.*

\$400

1598

**China**, Peking enamel snuff bottle, (c.20th century), decorated with painted scenes depicting a dog and a deer in a natural setting, floral designs around, Qianlong mark to base, height 80mm; another, depicting a parrot and a mantis in a garden setting, height 80mm. *Extremely fine.* (2)

\$400



1599\*

**China**, snuff bottle, (c.20th century), of broad square form with painted portraits of elderly gentlemen, coloured cabochon stopper, height 85mm. *Extremely fine.*

\$200

In custom fitted box.



1600\*

**China**, agate style snuff bottle, (c.20th century), of square form depicting a deity in grey and clouds in light brown tone, round cabochon stopper at top, height 75mm. *Extremely fine.*

\$200

In custom fitted box.

1601

**China**, glass snuff bottle, (c.20th century), of square form, painted from within with dragon and dog scenes, yellow cabochon stopper, signed near the neck, height 70mm. *Extremely fine.*

\$150

In custom fitted box.

1602

**China**, glass snuff bottle, (c.20th century), of elongated form, painted from within with mountain and boat scenes, blue cabochon stopper, signed near the neck, height 90mm. *Extremely fine.*

\$150

In custom fitted box.

1603

**China**, glass snuff bottle, (c.20th century), of elongated form, painted from within with horseman and forest scenes, blue cabochon stopper, signed on the body, height 90mm. *Extremely fine.*

\$150

In custom fitted box.

1604

**Zheng Xinniao**, Masterpieces of Classical Chinese Painting, Abbeville Press Publishers, 2011, 280pp, 234 colour illustrations, 42cm wide. *As new with hardcover dust jacket.*

\$100

1605

**European**, possibly Spain, saddle-shaped vase, (early 19th century), crazed finish decorated with blue and gilded family crest, pegasus above, floral emblems around, 430mm wide, 275mm high. *No cracks or chips, very fine.*

\$100

1606

**Japan**, c.early 20th century, bronze vase of double handled bowl form, rising on a signed stem from a dragon-fish shaped base, on custom wooden base, (180mm high). *Extremely fine.*

\$350

Signed Masa Toshi or Nori.





1607\*

**Japan**, late 19th century - early 20th century, terracotta and enamel vase of tall baluster form, ornately decorated with a scene of three samurai pursuing a dragon, (310mm high). *Extremely fine.*

\$650

Japanese terracotta pieces are extremely rare.



1608\*

**Japan**, 20th century, bronze vase of baluster form, flanked by zoomorphic handles with attached rings, applied with abstract decoration, embossed with the gilt imperial Chrysanthemum seal of Emperor Hirohito to one side, Japanese character stamped on base, (240mm high). *Extremely fine and rare.*

\$800

This type of bronze with the Emperor's crest (Mon) indicates that the maker enjoyed imperial patronage and the piece was probably given by the Emperor personally.

1609

**Eastern Europe**, possibly Bohemia, 20th century, large millefiori vase in the Venetian style, bulbous base tapering to a fluted mouth, multicolour glass pattern around, (370mm high). *Extremely fine.*

\$250



1610\*

**Indo-Persian Matchlock rifle**, 1680-1730, 40.5" barrel, in iron, hexagonal barrel, ornate metal work on barrel base, eight iron bands secure barrel to fore-wood and stock, iron sights mounted on barrel base, forward moving matchlock mechanism, powder box capped with metal cover on right of barrel base, trigger hoop with depressed dots along edges, metal strap plates from stock to fore-wood, ram rod, matchlock wick, ornate wood work and metal strips (a few missing) at base of stock, wood club on base of stock for close quarters (usually used on horse-back when raiding), carrying loop on left of barrel. *Repair work done to powder box on right of barrel base, knocks and gouges on wood stock, heavy wear on barrel overall, heavily used, very ornate and desirable piece for decoration, in rough condition.*

\$200

Please note: If you wish to view or purchase this item you will be required to produce a current gun or driver's licence to staff.

No mail out for this lot, collection only from the Sydney Office.



1611\*

**Indo-Persian Matchlock rifle**, 1680-1730, 49" barrel with dragon tipped muzzle, smooth bore, in iron, fluting along barrel, ornate metal work on barrel base, two iron bands secure barrel to fore-wood and stock, iron sights mounted on barrel base and muzzle, forward moving matchlock mechanism, powder box capped with ornate metal cover on right of barrel base, flower pins serve as pivot for trigger action under tension by small frizen style spring, trigger hoop, ram rod, matchlock wick. *Guide plate for mechanism missing, knocks and gouges on wood stock, heavy wear on barrel overall, heavily used, very ornate and desirable piece for decoration, good example of metal working of that era, in rough - fair condition.*

\$200

Please note: If you wish to view or purchase this item you will be required to produce a current gun or driver's licence to staff.

No mail out for this lot, collection only from the Sydney Office.



1612\*

**Pair of German percussion pistols**, by Sauer & Son, c1850s, 20cm long octagonal barrel, twirled rifling, fixed sight, rear sight in silver, consecutive serial numbers on underside of barrels, 0021270 and 0021271, 32 bore, one missing ram rod, most metal parts except barrel decoratively engraved, top of barrel engraved, 'I. P. SAUER u SOHN a SUHL', plate on butt of grip engraved, 'R. v B'. *One pistol with small piece missing from black forewood cap and the hammer on one does not cock back fully, very light underlying rust on barrels, otherwise very good condition.* (2)

\$2,000

These pistols were gifted to Lt Cecil Daniel Lockhart while he was convalescing in London. According to his family, the gift was made to him by Colonel Ricketts of the British Army as a reward for his 'bravery and leadership' in the First Battle of Villers-Bretonneux (30 March - 5 April 1918).

In the Official History of Australia in the War of 1914-18, Vol V, The A.I.F. in France 1918, by C.E.W.Bean, Lieutenant Lockhart is mentioned along with Sergeant Lawton as the last to leave during an intense battle at Villers-Bretonneux. In another published account it is related how determined Lieutenant Lockhart was in maintaining machine gun fire on the enemy in the face of fierce fire from the Germans. When ammunition was exhausted, one of his men, Sergeant Charlie Lawton, was shot and despite the ongoing assault by the Germans, Lockhart refused to leave his sergeant and instead picked him up and tried to carry him to safety. Unfortunately he fell and the Germans advanced upon them. Lawton in the meantime had passed away from his injuries and Lockhart, with Lawton on top of him, was able to feign death in spite of being kicked by a German trooper to see if he was still alive. The Germans then proceeded to shoot all men who were lying wounded in the face of their advance. When they had gone, and as the daylight faded, the injured Lieutenant Lockhart was able to crawl to the safety of the allied front line.

Cecil Daniel Lockhart, correspondence clerk, age 21, born at Summer Hill, NSW; Enl.20Mar1916 in 9 MG Coy; Emb.01May1916; promoted through the ranks and appt Lt 15Feb1918; invalided to UK 19Apr1918; RTA 13Apr1919; Appt terminated 27Jul1919; awarded OBE in King's Birthday Honour List 1936 for social services in the State of NSW.

With research.

Please note: If you wish to view or purchase this item you will be required to produce a current gun or driver's licence to staff.

No mail out for this lot, collection only from the Sydney Office.



1613\*

**Rare 4-barrel Sharps' pepper box derringer**, c1880s-1890s, serial number 4892, 22 short calibre, 2-5/8 inch 4-bbl cluster with pin front sight, rotating firing pin, brass frame with standard markings around the hammer screw hole, 'Tipping & Lawdon.Sharps' Patent', hammer cocking spring not working. *Handle grips missing, some rusting to barrel, trigger and hammer need repair work, otherwise good condition.*

\$500

Please note: If you wish to view or purchase this item you will be required to produce a current gun or driver's licence to staff.

No mail out for this lot, collection only from the Sydney Office.

1614

**Brass noon sun dial**, with miniature cannon(serves as an alarm clock) and viewing glass/timer glass (set to a specific time using the sun's-rays to light wick), on marble slab with viewing glass, by Livingstone, Troy, Michigan; Black glaze small bowl, in clay, wooden lid with print of flowers on top; Statuette, Middle Eastern style, of a man in garb and skull cap; Novelty money box, Ford Falcon XY GTHO, Allan Moffat, 1971, painted ceramic, with butter toffees (butter toffees not included); Brothel token, Illahee House, Seattle, Washington, with leaflet; Medallion, York Minster; gold plated, inside white silk box. *A good little novelty lot, good very fine - extremely fine.* (6)

\$60

1615

**Bugle**, 20th century, copper and brass bugle, mouthpiece attached, (295mm long); Brass lamp, Kempthorne Australia, 1944, internal battery powered lamp, with swivel mounted brass rod carrying handle and a clip on back for mounting, 56 mm lamp on front and a press on/off switch on top, (175mm high); Cigarette Cards, W.D. & H.O. Wills's, Arms and Armour (41), 1910, five cards framed behind glass, (307mm wide); another, W.D. & H.O. Wills's, Arms and Armour (41), 1910, five cards framed behind glass, (307mm wide). *Very fine.* (4)

\$100



1616\*

**Mount Everest commemorative statuette**, 1938, in darkened bronze (170x140mm, diameter of base 335mm), features a climber scaling a mountain and inset into the side of the mountain is a thermometer, at the base on one side in relief are the words, 'Mount Everest. October - November. 1938', on the underside is fitted an aluminium plate from where original plaque has been removed. *Spotting on brass backing plate for thermometer, otherwise extremely fine.*

\$200

Christies Sale 9621 (8 May 2003), lot 188 featured the papers and memorabilia of Lt Col Peter Richard Oliver who was a member of the British Mount Everest Expeditions of 1936 and 1938. One of the items in the lot was an identical statuette to the one offered above. It was stated that the statue was one of a limited number presented to each member of the expedition. The one offered in that lot also had the plaque removed.



1617\*

**Aircraft fuel tank from the crashed Southern Cloud**, a metal tank (approx 50x35x18cm) with inlet and outlet pipes. *Fine.*

\$300

The tank is attributed to the Southern Cloud, an Avro 618 Ten three-engine aircraft, registered number VH-UMF, which was flying daily air services between Australia's capital cities for Australian National Airways. The aircraft disappeared on a flight from Sydney to Melbourne on 21 March 1931 while flying under extremely hazardous weather conditions. The search for the missing aircraft lasted for 18 days and one of the searchers was airline co-owner (with Charles Ulm) Charles Kingsford Smith. This was Australia's first major airline disaster and resulted in eight fatalities and this and another crash later in the same year culminated in the closure of Australian National Airways in that year.

The crash site remained a mystery for 27 years until a worker on the Snowy Mountains Scheme discovered the wreckage by accident on 26 October 1958 in heavily wooded, mountainous terrain about 25km off its original course. Artefacts from the wreckage are held by various museums including the Powerhouse Museum in Sydney, The National Museum of Australia in Canberra, ACT and the Tumbarumba Visitor Information Centre which is 30km north of the Southern Cloud Memorial Scenic Lookout at Tumbarumba, NSW. There is also a Southern Cross Memorial Park at Cooma, NSW.

1618

**Stereoscope viewer**, hand held with stereo cards (approx 75), held in a large box as prepared for storage, mostly as views of Sydney and personalities all from the 'T & C Journal' Stereos collection, includes building series, Bleriot monoplane, relaying tram lines Oxford street, Sydney Gas Works, the various bays of Sydney, etc. *Good - fine.* (approx 75)

\$150

1619

**Scales**, portable hand held brass beam balance with seven brass weights (1 to 20 grams) made in India, in case with tweezers missing; also includes many coin cases, plastic coin sleeves, flips and capsules in various sizes. *Mostly fine.* (approx 100)

\$80

1620

**Biscuit Tin**, c1930s, Peek Freans biscuits, 'The Winner', horse racing theme, of cylindrical form with rotating barrel that spins to reveal the winning horse and odds below, full colour decorative racing print around, (170mm diameter). *Very fine with patina commensurate with age, rare.*

\$100

1621

**Collection of miniature cars**, Hot Wheels (4), Muscle machines (5), Aussie Road Ragers (3), Johnny Lightning models (3), Dinky (2), Matchbox set of six (2), Matchbox Models of Yesteryear (3), Arnotts biscuit tin truck, Catalogue of British Diecast Model Toys by J.Ramsay (1991). *All in packs of issue, mint condition.* (24)

\$80

1622

**Collection of miniature cars**, Matchbook varieties, Models of Yesteryear (12), Premier Collection (6), matchbox set of six (2). *All in packs of issue, near mint condition.* (20)

\$80



part

1623\*

**Jim Beam decanters**, '59 Cadillac Eldorado (2), one white and one pink; Mercedes Benz 450SL (1974 model), silver (rare in this colour); Chevrolet Camaro SS (1969 model) (front axle unglued), Pennsylvania special yellow edition (rare and limited edition release); Ford F100 Pick-up truck (Clermont Supply) (1940 model), black. *In boxes of issue (opened), alcohol has been removed, made from handcrafted genuine porcelain, extremely fine.* (5)

\$250

1624

**Jim Beam decanters**, '59 Cadillac Eldorado (2), one black and one Aleutian grey poly; Corvette Stingray (targa top edition) (1968 Model), bright yellow; Corvette Stingray (1984 model), white; Chevrolet Camaro SS (1969 model), Le Mans Blue (rare in this Colour). *In boxes of issue (opened), alcohol has been removed, made from handcrafted genuine porcelain, extremely fine.* (5)

\$250

1625

**Jim Beam decanters**, '59 Cadillac Eldorado (2), one white and one baby blue; Corvette Stingray (1957 model), turquoise (plastic fixtures have been repaired); Chevrolet Bel Air (1957 model), black (rare in this colour); Mercedes Benz 450SL (1974 model), vermillion red. *In boxes of issue (opened), alcohol has been removed, made from handcrafted genuine porcelain, extremely fine.* (5)

\$250



part

1626\*

**Jim Beam decanters**, '59 Cadillac Eldorado, white; Corvette Stingray (1984 model), black (very rare in this colour); Corvette Stingray (70th Indianapolis 500 Pace car (very rare limited edition release), (1986 model), bright yellow; Corvette Stingray (targa top edition) (1968 Model), candy green apple (rare in this colour); Ford Mustang 64-1/2 (1964 model), dark chocolate brown. *In boxes of issue except for the Mustang (in a Dodge Hot Rod box), alcohol has been removed, made from handcrafted genuine porcelain, extremely fine.* (5)

\$250

1627

**Jim Beam decanters**, Chevrolet Bel Air convertible (1957 model) (2), both black; Corvette Stingray (targa top edition) (1978 Model), red; Corvette C1 (1953 model), white; Chevrolet Caprice (1978 model), State trooper edition (rare). *In boxes of issue (opened), alcohol has been removed, made from handcrafted genuine porcelain, extremely fine.* (5)

\$250

1628

**Jim Beam decanters**, Chevrolet Bel Air Convertible (1957 model) (2), one baby blue and one baby yellow; Mercedes Benz 450SL (1974 model), sand beige; '59 Cadillac Eldorado, racing blue; Ford Model A (1930 model), police car, blue. *In boxes of issue (opened), alcohol has been removed, made from handcrafted genuine porcelain, extremely fine.* (5)

\$250

1629

**Jim Beam decanters**, Corvette Stingray (1984 model), bronze; Chevrolet Camaro SS (1969 model), bright yellow; Corvette Stingray (1978 model), red (in 1969 Camaro SS box); Mercedes Benz 450SL (1974 model), arctic white; NASA space shuttle (Extremely rare). *In boxes of issue (opened except corvette stingray 1978), alcohol has been removed, made from handcrafted genuine porcelain, extremely fine.* (5)

\$250

1630

**Jim Beam decanters**, Mercedes Benz 450SL (1974 model), dark forest green; Ford police car (1930 S model), Black and white, comes with stickers for DIY graphics; Chevrolet Bel Air (1957 model) (Special edition and very rare), dusky brown; Chevrolet Camaro SS (1969 model), bright yellow; Mercedes Benz 450SL (1974 model), midnight blue (rare in this colour). *In boxes of issue (opened), alcohol has been removed, made from handcrafted genuine porcelain, extremely fine.* (5)

\$250

1631

**Jim Beam decanters**, Mercedes Benz 450SL (1974 model) (2), one black (rare in this colour) and one sand beige; Chevrolet Bel Air (1957 model) (2), one black and one Pennsylvania Harbour Blue (very rare edition); Ford Roadster (1934 model), banana yellow (rare). *In boxes of issue (opened), alcohol has been removed, made from handcrafted genuine porcelain, extremely fine.* (5)

\$250

1632

**Assorted labels**, alcohol, Kahlua, Smirnoff, Hardy's, 1970s-1990s, all in flat box. *Fine - good fine.* (approx 1,000)

\$40

1633

**Book**, Invitation to a Royal Wedding, 1981, Princess Diana, over-sized hardcover, dust-jacket, full color pictorial of the Wedding of the Prince of Wales and the Lady Diana Spencer, St. Paul's pp140, by Kathryn Spink; Elizabeth II, 1981, Royal Wedding commemorative, fifty cents (2); Bell's Scotch Whiskey, 1981, Royal Wedding commemorative, 75cl, porcelain, gold gilt (2). *Bell's Scotch Whiskey in boxes of issue, fine - very fine.* (5)

\$70

No mail out for this lot, collection only from the Sydney Office.

1634

**Elizabeth II**, First and Last One Dollar Currency, coin and note set in folder issued by Mr.Roberts 1984 (2); PNC, World Heritage 2005; Passport, Sydney 2000 Olympic Mascot; Paperweight, One Kilo Australian Nugget (2); Germany, Nazi Plaque in zinc (90x140mm) 1933; Japan, 35th Anniversary of Doraemon Coin Set 2005; USA, 60th Anniversary of Victory in the Pacific (three coin set) 2005; Morgan Mint, Leonardo Di Vinci Collection (enamelled on obverse) Kennedy half dollars set of five post 1965; playing cards, Iraqi Most Wanted (2). *In packs and cases of issue, uncirculated.* (12)

\$140

Ex D.A.Garland Collection.

1635

**Star Wars Collectables**, bendable figurines, all different characters (12), die cast metal micro machines collectors set of seven. *All in original boxes of issue, mint condition.* (13)

\$100

1636

**Olympic Games**, Official Emblem Medallion Set, 1896-2000, twenty four medallions in gilt bronze and enamel, presented in a beautiful timber picture frame display board for wall hanging, this being set no.2293 of 5000. *Uncirculated.*

\$150

1637

**Australia**, Olympic Games, pins, a wide assortment most with RRP of \$9.95, many mounted on sale cards as issued. *Uncirculated*. (50)

\$70

1638

**United Kingdom**, British Fire Service Association, badges in metal, bent lug on reverse with one missing; States of Guernsey Fire Brigade, in metal and in gold gilt, enamelled centre, lugs on reverse with one lug bent; Shropshire Fire Brigade, in metal and in gold gilt, enamelled centre, lugs on reverse; London fire brigade, in metal, enamelled centre, made by Marples & Beasley, Birmingham, clip on reverse. *Very fine*. (4)

\$70

1639

**United Kingdom**, 1994, Petersborough VFB 110th anniversary medal, in brass with gold gilt, ribbon with pin. *Uniface, scarce, very fine - extremely fine*.

\$50

1640

**Malaysia**, fireman's hat badge, in metal with gold gilt, lugs on reverse, written, perkhidmatan bomba Malaysia (fire service of Malaysia). *Extremely fine*.

\$70

1641

**Scouting**, a large wooden box full of scouting memorabilia, including badges, pennants, epaulettes and assorted related pieces. *Very fine - extremely fine, some items very scarce*. (100s)

\$100

## GREAT BRITAIN SILVER & BRONZE COINS



1642\*

**William I**, (1066-1087), silver penny, BMC type VIII or PAXS issue, issued by Outhbeorn of York mint, rev. +IIP-DBERN ON EFRI, (S.1257, BMC 1157 cf.Pl.XXVII, 16). *Slightly off centre, toned, very fine or better*.

\$600

1643

**Henry III - Edward I**, silver pennies (2) and cut pennies as halfpence (2), mint includes London others uncertain, in packets described. *Fair - nearly very fine*. (4)

\$100

Ex D.A.Garland Collection, previously from Downies.



part

1644\*

**Edward I - Queen Victoria**, an interesting group, includes a Charles II shilling 1663 (S.3371) (trace of mount on edge), (illustrated), 1840 (illustrated), 1895 farthings (both EF), 1826 copper penny (VF), Edward I, London mint penny (piece out of edge, others mostly holed or mounted (2)). *Poor - extremely fine*. (7)

\$200

1645

**Elizabeth I**, (1561-77), third and fourth issue, sixpences, 1570 mm coronet, 1575 mm eglantine (S.2562, 2563) (2); (1582-1600), sixth issue, shilling, undated (S.2577), sixpences, 1590 mm hand, 1593 mm tun (S.2578B) (2). *Good - nearly fine*. (5)

\$120



part

1646\*

**Elizabeth I**, (1558-1603), third and fourth issue, sixpence, 1567 mm coronet; sixth issue, sixpence, 1593 mm tun (S.2562; 2578D). *Very fine; fair*. (2)

\$100



1647\*

**Elizabeth I**, (1558-1603), milled coinage, sixpence, 1564 (S.2597). *Toned, good fine*.

\$300

1648

**Charles I**, (1642-1648), fourth bust silver shilling, mm tun (S.2791), no inner circles. *In case with certificate of authenticity, very good.*

\$120

Ex Messing Hoard discovered in Essex in the early 1970s.



1649

**Charles I**, (1625-49), half groat, 1644 oval shield (S.3090), rose farthing (S.3206); Edward I, (1272-1307), penny (S.1382?). *Poor - nearly fine.* (3)

\$100

All ex John Bertrand (Collectables) Ltd with tickets.

1651\*

**Commonwealth**, (1649-1660), half crown, 1656, mm sun (S.3215). *Grey toned slightly short of flan, otherwise nearly very fine.*

\$500

Ex Gray Donaldson Collection (from a Downie Sale, Lot 1471).



1652\*

**Commonwealth**, (1649-1660), sixpence, 1649, mm sun (S.3219); penny (S.3222). *The first with edge chip, otherwise toned good fine; second good fine.* (2)

\$200

Ex Noble Numismatics Sale 51 (lots 1276, 1278) and Gray Donaldson Collection.



1653\*

**Commonwealth**, (1649-1660), half groat (S.3221); penny (S.3222). *Good fine; good very fine.* (2)

\$200

Ex Gray Donaldson Collection.



1650\*

**Charles I**, (1625-1649), Newark besieged, sixpence, 1646 (S.3146). *Attractive grey tone with well spread flan, very fine and rare as such.*

\$2,000



1654\*  
**Charles II**, crown, first bust, 1662 rose below; second bust, crown, 1667 (S.3550, 3357). *Nearly fine; very good.* (2)  
 \$200



1655\*  
**Charles II**, crown, second bust, 1671 (S.3357). *Lightly toned, good fine.*  
 \$250

In a slab by PCGS as VF25.

1656  
**Charles II**, crown, second bust, 1671 (S.3357); **George III**, new coinage, crown, 1819 LIX (S.3787). *Evenly worn, toned very good; polished and surface marked, otherwise good very fine.* (2)  
 \$200



1657\*  
**Charles II**, shilling, first bust, 1663 (S.3371) top ribbon opposite 0. *Toned, nearly very fine.*  
 \$450

1658  
**Charles II**, Maundy penny, 1681 (S.3390). *Toned, good extremely fine.*  
 \$100

In a slab by PCGS as AU55.



1659\*  
**James II**, fourpence, 1687/6 (S.3414); **William III**, first bust sixpence, 1696 (S.3520; twopence, 1698 (S.3551A). *Good very fine - extremely fine.* (3)  
 \$240



1660\*  
**William and Mary**, halfcrown, first busts and reverse, 1689 (S.3434). *Cleaned, nearly very fine.*  
 \$250

1661  
**William and Mary - Queen Victoria**, 1694-1887, halfpennies, 1694 (2), 1696 (2), 1697, 1699, 1700 (2), 1717 (2), 1723 (2), 1724, 1731, 1733, 1736 (2), 1737, 1738, 1770, 1773, 1774, 1775 (5), 1806 (2), 1807 (2), 1826, 1827, 1841, 1844, 1848/7 (2), 1851, 1853 (3), 1855, 1856, 1857, 1860 (2), 1861, 1867, 1868 also pennies 1826, 1853, Holloway 1857. *Sold with collector's envelopes, mostly poor - very good, a few very fine.* (52)  
 \$150



1662\*  
**William III**, first bust, crown, 1695; **Anne**, after the Union, fourth bust, shilling, 1712 roses and plumes (S.3470, 3617). *Nearly fine; very good.* (2)  
 \$120



1663\*  
**William III**, third bust, shilling, 1697 (S.3505). *Toned, good extremely fine.*

\$500

In a slab by PCGS as MS63.



1668\*  
**George III**, new coinage, halfcrown, large or 'bull' head, 1817 (S.3788). *Golden peripheral tone, good extremely fine.*

\$400



1664\*  
**William III**, first bust, sixpence, 1697 early harp (S.3520). *Lightly toned, good extremely fine.*

\$200

In a slab by PCGS as AU58.



part

1669\*  
**George III**, first issue, shillings, 1787 with some of hearts (S.3746). *Good very fine; sharply struck and toned, good extremely fine. (2)*

\$160



1665\*  
**George II**, old head, halfcrown and shilling, 1745 Lima (S.3695, 3703). *Toned, very fine. (2)*

\$200



1670\*  
**George III**, emergency issue, dollar (4/9) oval countermark in the centre of obverse of Charles III Mexico City Mint eight reales, 1795FM (S.3765a). *Peripheral tone, good very fine.*

\$750



1666\*  
**George II**, old head, sixpence, 1745 Lima (S.3710). *Toned extremely fine.*

\$200

In a slab by PCGS as AU58.



1671\*  
**George III**, emergency issue, silver dollar with oval countermark on a Charles III Mexico City eight reales, 1795FM (S.3765A). *Usual surface marks, lightly toned, good fine, countermark good very fine.*

\$400

1667  
**George II**, old head, farthing, 1754 (S.3722); **George IV**, farthing, 1821 (S.3822); **William IV**, groat or fourpence, 1836 (S.3837). *Very fine; good extremely fine; good extremely fine. (3)*

\$120





1672\*  
**George III**, emergency issue, dollar (4/9), oval countermark on Charles III Mexico City Mint eight reales, 1795FM (S.3765). *Scratched, good very fine.*

\$300



1675\*  
**George III**, Bank of England, dollar or five shillings, 1804 top leaf to left side of E (S.3768). *Nearly fine.*

\$200



1673\*  
**George III**, emergency issue, silver dollar, oval countermark on Charles III Potosi Mint eight reales, 1795PP (S.3765A). *Soft strike on portrait, edge knocks and wear (possibly once mounted), otherwise nearly fine, countermark good very fine, rare.*

\$400

Ex Steve Album with his ticket.



1677\*  
**George III**, second issue, cartwheel twopence, 1797 (S.3776). *Usual small edge bumps, otherwise very fine.*

\$150



1674\*  
**George III**, Bank of England, proof silver dollar or five shillings, 1804, stop after REX, (S.3768, ESC 145). *Light blue and gold patination, nearly FDC and very rare.*

\$2,000

In a slab by NGC as PF62.



1678\*  
**George III**, second issue, cartwheel twopence, 1797 (S.3776). *A few small edge bumps, otherwise good fine.*

\$100



1679\*  
**George III**, second issue, cartwheel penny, 1797 (S.3777). *Brown, good extremely fine.*

\$200

Ex Noble Numismatics, Sale 59 (lot 1468).



1680\*  
**George III**, new coinage, crown, 1818 LVIII (S.3787).  
*Dull grey paper tone over full subdued mint surface, good extremely fine.*

\$500

In a slab by PCGS as MS62.



1681\*  
**George III**, new coinage, crown, 1818 LVIII (S.3787). *Lightly toned, minor surface marks, otherwise good extremely fine, scarce.*

\$400



1682\*  
**George III**, new coinage, crown, 1819 LIX (S.3787). *Golden peripheral iridescent tone, good extremely fine.*

\$400



1683\*  
**George III**, new coinage, crowns, 1819 LIX, 1820 LX (S.3787). *Nearly fine; nearly very fine. (2)*

\$150

part

1684

**George III**, new coinage, halfcrown, small head, 1817 (S.3789); **George IV**, sixpence, 1826 (S.3815). *Nearly very fine; good very fine. (2)*

\$150



1685\*

**George III**, new coinage, shilling, 1816 (S.3790). *Good extremely fine.*

\$200



1686\*

**George III**, new coinage, shilling, 1817; **George IV**, bare head, shilling, 1826 (S.3790, 3812). *Toned, nearly very fine. (2)*

\$120



1687\*

**George IV**, crown, laureate head, 1822 tertio (S.3805). *Light grey tone, extremely fine, scarce.*

\$750



1688\*

**George IV**, shilling, laureate head, reverse, crowned garnished shield, 1821 (S.3810). *Toned, good extremely fine.*

\$300

In a slab by PCGS as MS62.

1689  
**George IV - William IV**, sixpence, 1835 (S.3836); pennies, 1826, 1827 (S.3823) (2); halfpenny, 1826 (S.3824). *Very good - fine.* (4)

\$70



1690\*  
**Queen Victoria**, young head, crown, 1844 cinquefoil stops (S.3882). *Nearly extremely fine.*

\$100

1691  
**Queen Victoria**, young head, crown, 1844 star stops VIII (S.3882); Jubilee head, crowns, 1887 (2), 1888 (S.3921) (3); old head, crowns, 1893LVII, 1896 LX, 1897LX (S.3937) (3); Elizabeth II, crowns, 1953, proof 1972 (no case) (S.4136, 4226) (2). *Very good - FDC.* (9)

\$330

Ex D.A.Garland Collection.



1692\*  
**Queen Victoria**, young head, crown, 1845, cinquefoil stops (S.3882). *Scratch behind head, nearly very fine/very fine.*

\$160



part

1693\*  
**Queen Victoria**, young head, crowns, 1845 and 1847 cinquefoil stops (S.3882). *Second worn in centre, nearly extremely fine.* (2)

\$200

1694  
**Queen Victoria**, halfcrowns, young head, 1874, 1879 (S.3889) (2); Edward VII, halfcrown, 1908 (S.3980). *Nearly fine - very fine.* (3)

\$60

1695  
**Queen Victoria**, young head, halfcrowns, 1874, 1875 (2), 1883 (S.3889) (4); Edward VII, florin, 1908, shilling, 1906 (S.3981, 3982) (2); George V, first coinage, halfcrown, 1918 (S.4011); George VI, crown, 1951 Festival of Britain (S.4111); Elizabeth II, second issue, crowns, 1965 Churchill (3), farthings, 1954, 1955 (S4144 [3], 4159 [2]) (5); decimal coinage, twenty five pence, 1977 Silver Jubilee (S.4227) (2); also Queen Victoria model one penny, undated; Coronation of King George V, 1911, in silver (32mm) (BHM 4035). *Good - uncirculated.* (17)

\$80

1696  
**Queen Victoria**, young head, halfcrown, 1885 (S.3889); Edward VII, halfcrowns, 1902 and 1907 (S.3980). *Nearly fine - good very fine.* (3)

\$70

1697  
**Queen Victoria**, Godless florin, 1849 (S.3890). *Nearly very fine.*

\$150

1698  
**Queen Victoria**, young head, shillings, 1839, 1843, 1849, 1856, 1858, 1873; 1887 Jubilee coinage, 1900 old head (S.3882, 3904, 3906A, 3926, 3940A). *Good - nearly very fine.* (8)

\$120



1699\*  
**Queen Victoria**, Jubilee coinage, crown, 1887 (S.3921). *Underlying brilliance, light grey brown with blue iridescent highlights on the reverse, uncirculated.*

\$250

In a slab by NGC as MS62.

1700  
**Queen Victoria**, Jubilee coinage, crowns, 1889 (2), 1891 (S.3921). *Very good - nearly extremely fine.* (3)

\$120

1701  
**Queen Victoria**, Jubilee coinage, crown, 1889 (S.3921), also George V, halfcrowns, 1916, 1921 and 1929. *The first polished, fine - very fine.* (4)

\$70



1702\*

**Queen Victoria**, Jubilee coinage, double florin, Arabic 1, 1887 (S.3923). *Underlying brilliance, with blue and gold patination on the reverse, uncirculated.*

\$150

In a slab by NGC as MS62.



part

1703\*

**Queen Victoria**, Jubilee coinage, florins, 1889 and 1891 (S.3825). *Fine; toned, extremely fine.* (2)

\$200



1704\*

**Queen Victoria**, old head, crown, 1893 LVI (S.3937). *Toned, nearly extremely fine/extremely fine.*

\$300



1705\*

**Queen Victoria**, old head, crown, 1893 LVI (S.3937). *Toned, several surface marks, otherwise extremely fine.*

\$250

1706

**Queen Victoria**, old head, crown, 1893 LVI (S.3937). *Edge nick on obverse, otherwise very fine.*

\$50



part

1707\*

**Queen Victoria**, old head, crowns, 1893 LVI, 1897 LXI, 1898 LXII (S.3937). *Nearly fine - nearly extremely fine.* (3)

\$270



1708\*

**Queen Victoria**, copper third farthing, young head, 1844 (for use in Malta) (S.3952). *Good very fine, scarce.*

\$100

Ex Coin Galleries (Stacks) Numismatic Review Vol.V No.4 (D806).

1709

**Queen Victoria**, copper quarter farthings, 1839, 1851, 1852, 1853 (S.3953). *Very fine - extremely fine.* (4)

\$180

A complete date set.



1710\*

**Queen Victoria**, bun head, bronze penny, 1891 (S.3954). *Mostly red uncirculated.*

\$200

In a slab by PCGS as MS64RB.



1711\*

**Queen Victoria**, bun head, bronze farthing, 1863 (S.3958). *Brown, nearly extremely fine and rare.*

\$100



part

1712\*

**Queen Victoria**, bronze third-farthings (for use in Malta), 1866, 1868, 1876, 1881, 1884 and 1885 (S.3960) (6); Edward VII, third-farthing, 1902 (S.3993); George V, third-farthing, 1913 (S.4062). *Good extremely fine - uncirculated, many with mint red, each with a descriptive packet and provenance.* (8)

\$400

Ex Coin Galleries (Stacks) Numismatic Review Vol.V No.4

(D878, D879) 1885 and 1902, others from Spink & Son January 1964 for 1866, February 1964 for 1884 and January 1965 for 1876, 1868 from Doran of Hanover February 1965, and Harlan J.Berk (100 USD) for 1881.

1713

**Queen Victoria**, farthing-halfcrown (1895-1901) set of nine; Edward VIII, Richard Lobel proof cupro nickel series of crowns 1936, New Guinea, Palestine (Bruce X.M1a) (2); Elizabeth II, proof coin collection, Celebrating QE II 80th Birthday (set of thirteen) 2006 (2). *In cases of issue, fine - FDC.* (5)

\$120

Ex D.A.Garland Collection.

1714

**Queen Victoria - Elizabeth II**, pennies, 1884-1967, noted Edward VII 'baldies as used for two-up' (82). *In 2x2 holders, very good - nearly extremely fine.* (227)

\$50

1715

**Queen Victoria - Elizabeth II**, halfpennies, 1874-1967. *In 2x2 holders, very good - extremely fine.* (122)

\$50

1716

**Edward VII**, matte proof set, 1902 crown to Maundy penny (S.3979-85). *Toned, good extremely fine or nearly FDC.* (9)

\$750

In slabs by PCGS as PR62 (3), 63 (4), 61 (2).



1717\*

**Edward VII**, matte proof silver crown or five shillings, 1902, (S.3978). *Light grey patination, nearly FDC.*

\$350

In a slab by NGC as PF62 Matte.



1718\*

**Edward VII**, crown, 1902 (S.3978). *Nearly uncirculated.*

\$350

In a slab by NGC as AU58.



1719\*

**Edward VII**, crown, 1902 (S.3978). *Cleaned with minor surface scratches, otherwise good very fine/extremely fine.*

\$120



1720\*

**Edward VII**, crown, 1902 (S.3978). *Some hairlines and small edge nicks, otherwise very fine.*

\$100

1721

**Edward VII**, florin, 1908 (S.3980); George V, first coinage, florin, 1917, shillings, 1915, 1916, 1917, 1918 (2) (S.4012, 4013 [5]) (6); George VI, part set, 1937, includes halfcrown, florin, threepence, brass threepence, penny, halfpenny, farthing (S.4080, 4081, 4085, 4112, 4114, 4115, 4116) (7). *Nearly very fine - uncirculated.* (14)

\$140

1722

**Edward VII - George VI**, silver threepences, 1902, 1903, 1906, 1911, 1912 (2), 1913, 1915 (2), 1916, 1917, 1918 (2), 1919, 1928, 1942 (2), 1943 (2), brass 1946 (2) (S.3984, 4015, 4042, 4085, 4112). *Very good - extremely fine, the last scarce.* (21)

\$50



1723\*

**Edward VII**, halfpenny, 1903 (S.3991). *Full original mint red, choice uncirculated.*

\$100

In a slab by NGC as MS64RD.



1724\*

**George V**, proof set, halfcrown - Maundy penny, 1911 (S.PS13). *In case of issue, FDC.* (8)

\$1,000

1725

**George V**, first coinage, halfcrown, 1918 (S.4011), fourth coinage, halfcrown, 1936 (S.4037); George VI, first coinage, crown, 1937, florin, 1944, shilling, 1942 (S.4078, 4081, 4082) (3), first issue, farthing, 1952 (S.4119) (2); Elizabeth II, second issue, halfcrown, 1961 (S.4145), second issue, proof penny, 1970 (S.4157). *Very fine - FDC.* (9)

\$60



1726\*

**George V**, fourth coinage, proof wreath crown, 1927 (S.4036). *Nearly extremely fine.*

\$200



1727\*

**George V**, fourth coinage, wreath crown, 1928 (S.4036). *Nearly extremely fine.*

\$240



1728\*

**George V**, fourth coinage, wreath crown, 1930 (S.4036). *Nearly extremely fine.*

\$220



1729\*  
**George V**, fourth coinage, wreath crown, 1933 (S.4036).  
*Nearly extremely fine.*

\$250



1730\*  
**George V**, fourth coinage, wreath crown, 1936 (S.4036).  
*Nearly extremely fine.*

\$450

1731  
**George V**, farthings, 1931 (S.4061). *Full mint red, uncirculated.* (10)

\$70

1732  
**George V**, third-farthings, 1913 (S.4062). *Good extremely fine - uncirculated, many with mint red.* (8)

\$120

Purchased c1964-5 with descriptive packets.

1733  
**George V - Elizabeth II**, crowns, 1935 Silver Jubilee, 1937, 1951 Festival of Britain, 1965 Churchill, 1977, 1981, halfcrown, 1937, shillings, 1931, 1939, sixpence, 1937, Britannia 1oz fine silver two pounds, 2012 (S.4078, 4111, 4144, 4227, 4229, 4080, 4039, 4082, 4084, 4500); also India, EIC, Queen Victoria - George VI, rupees, 1892, 1944, and half rupees, 1884, 1943 (KM. 492, 557.2, 491, 552). *Nearly very fine - nearly uncirculated.* (15)

\$220

1734  
**George V - Elizabeth II**, threepences, 1912, 1917, 1937, 1953; sixpences, 1918, 1931, 1942, 1946; shilling, 1928; halfcrowns, 1940, 1945 (2), 1946. *In 2x2 holders, good - extremely fine.* (13)

\$50

1735  
**George VI**, proof set, 1937, crown - farthing, includes Maundy set (S.PS16). *In case of issue with light foxing on fabric of inside lid, some toning on Maundy coins and farthing to threepence, nearly uncirculated - FDC.* (15)

\$300

1736  
**George VI**, mint set, 1937, crown to farthing. *Uncirculated.* (10)

\$100

Ex V.B.Short Collection.

1737  
**George VI**, crown, 1937 (S.4078); British Trade Dollar, 1908B, Bombay Mint (KM.T5, Pr.18). *Both with full brilliance, uncirculated.* (2)

\$120

In slabs by NGC as MS63 and MS64 respectively.

1738  
**George VI**, proof set, 1950, halfcrown - farthing (S.PS17). *In case of issue, case soiled and with mothing on the felt, coins toned, nearly FDC - FDC.* (9)

\$120

1739  
**George VI**, proof set, 1951, crown - farthing (S.PS18). *In case of issue (damaged), all coins toned light - dark, nearly extremely fine - nearly FDC.* (10)

\$100

1740  
**Elizabeth II**, proof set, 1953, crown - farthing (S.PS19). *In case of issue, fabric on inside lid with some rusting, coins toned, nearly FDC - FDC.* (10)

\$100

1741  
**Elizabeth II**, mint sets, 1953, halfcrown to farthing, two of each. *One threepence spoilt, otherwise uncirculated.* (18)

\$50

Ex V.B.Short Collection.

1742  
**Elizabeth II**, proof sets, 1970, 1971, 1994 (red case) (S.PS 20, 21, 54) (3); mint one pound, 1983 (S.4221); mint crowns, mostly cased, 1953 (2), 1965 (2), 1972, 1977 (4), 1980 (3), 1981 (4) (S.4136 [2], 4144 [2], 4226, 4227 [4], 4228 [3], 4229 [4]) (16); proof fifty pence, 1973 EEC (S.4224); first decimal coins set (2); brass threepence set, 1953-1967 (cased, this crazed); From old pennies to Decimal pence set in folder with last Lsd coins and 1996 decimal coins to one pound; also, Alderney, proof silver two pounds, 1994 (KM.7a); Guernsey, proof silver two pounds, 1994 (KM.56a); Isle of Man, proof silver twenty five pence, 1975 and proof silver commemorative crowns, 1974, 1976 (2) (KM.31a, 30a, 37a [2]) (4). *In cases and packets, the Isle of Man cases affected by foxing, the threepence set good - very fine, the rest uncirculated - FDC.* (31)

\$150

1743  
**Elizabeth II**, proof sets, 1983 (S.PS33) (2); proof twenty five new pence, 1977 (S.4227); specimen one pound, 1983 (S.4221); specimen five pounds, 2000, 2001 (S.4553, 4554) (2); specimen twenty five new pence, 1981 (S.4229) (8); also Birth of Prince William medal, 1982 (37mm), Decision Made to Hand Over Sovereignty of Hong Kong medal, 1984, in proof bronze (38mm), obverse, Queen Victoria, reverse, English, Scottish and Irish shields, also rose, shamrock and thistle and cameos of George III, George IV and young Queen Victoria. *Uncirculated - FDC.* (16)

\$100

Ex D.A.Garland Collection.

- 1744  
**Elizabeth II**, silver one ounce two pounds, Standing Britannia, 1998 (2), 2000 (2), 2002 (2), 2004 (S.4500) (7), Britannia holding trident and shield with lion in background, 2001 (S.4502) (2), Britannia head left, 2003 (S.4503), seated Britannia, 2005 (S.4504). *Uncirculated*. (13)  
\$300  
Ex D.A.Garland Collection.
- 1745  
**Elizabeth II**, complete set of last Lsd and first decimal coin issues, in plastic cases. *In packs of issue, uncirculated*. (149)  
\$150
- 1746  
**Charles II - Elizabeth II**, a mixed group in varying condition, includes Charles II crown 1679 (S.3358), crown 1893 LVI, halfcrowns 1817, 1902, florin 1881; pennies 1797, 1826, 1859, farthing of Chard, Somerset 1669 (Williamson 82); Pidcock farthing, elephant/cockatoos (D&H 1067a); others mostly farthings etc, several coins holed. *Poor - very fine*. (30)  
\$100
- 1747  
**William III - George VI**, shilling - third farthing, assorted issues, with some duplication, including shilling, 1711 (S.3618); cartwheel twopence, 1797 (S.3776); penny, 1797 (S.3777), 1854 (S.3948); halfpenny, 1799 (S.3778), 1857 (S.3949), 1862 (S.3956), 1907 (S.3991); farthings, 1721 (S.3662), 1806 (S.3782), 1822, 1826 (S.3822), 1864, 1869, 1885, 1886 (S.3958), 1902 (S.3992)(4). *Poor - extremely fine*. (29)  
\$200
- 1748  
**George III**, shilling, 1787 without semee of hearts (S.3743); Queen Victoria, Godless florin, 1849, Gothic florin, 1878 (S.3890, 3893); Edward VII, crown, 1902 (S.3978); also British India, William III, rupee, 1835 (KM.450.2). *Good - very fine, the crown with edge bumps, otherwise very fine*. (5)  
\$150  
Ex D.A.Garland Collection.
- 1749  
**George III**, George IV, Queen Victoria, Maundy penny, 1795 (S.3761); sixpence 1787, with semee of hearts (S.3748); halfcrown, 1823 (S.3808); crown, 1889 (S.3921); halfcrown, 1887 (S.3924); florin, 1893 (S.3939); shilling, 1888/7 (S.3926); sixpence, 1893 (S.3940). *Fine - very fine*. (8)  
\$120
- 1750  
**George III**, halfcrown, 1836, halfpenny, 1799, farthing, 1799 (S.3779); George IV, farthing, 1826; Queen Victoria, young head, penny, 1855, Jubilee head, double florin, 1887 Arabic 1 (S.3923), florin, 1889, old head, crown, 1895LIX (S.3937), halfcrown, 1900, shilling, 1901. *Poor - very fine*. (10)  
\$120
- 1751  
**George III - George V**, crowns 1892, 1898 LXII; three shillings Bank token 1815; sixpence 1929; threepence 1902; farthings 1876H (holed), 1897, 1905, 1909 (2), 1915, 1917, 1918 (3), 1919; threepence brass check; Victory Medal 15673 Pte W.Edmunds R.Lanc.R; Daily Dispatch Birthday Club medal, 1935 (cased); Spain silver peseta 1870; Egypt, qirsh yr.6 (1913). *Fine - very fine*. (21)  
\$150  
Ex W.G.Simcock Estate.
- 1752  
**George III - Elizabeth II**, halfpennies, 1895-1967 (102), pennies, 1807-1967 (352), threepences, 1937-1967 (60), sixpences, 1922-1967 (111), one shillings, 1921-1964 (31), two shillings, 1921-1966 (20). *Very good - uncirculated*. (676)  
\$100  
Ex D.A.Garland Collection.
- 1753  
**Queen Victoria - Elizabeth II**, various proof issues, 1937 shillings to crown set, (S.4079 - 4083); four shillings 1887 Arabic 1 (S.3923); halfcrowns 1893, 1929, 1936; florins 1887 (red and blue patination), 1913, 1931, 1935, 1945; shilling 1887 (red and gold patination); sixpences 1887 (2, both types); threepence 1887, penny 1967 and George V Silver Jubilee medal 1935. *Mostly extremely fine - uncirculated*. (20)  
\$200
- 1754  
**Queen Victoria - Elizabeth II**, 1862-1981, crown size Cu/Ni, 1977 (2), 1980 (6), 1981 (3); pennies (17); halfpennies (9); also includes new pence minors (approx 50); mint set, 1988; medals, assorted (4); world coins, assorted minors from Cook Islands (2), Falkland Islands, Fiji (17), New Zealand (approx 47), Singapore (26), Western Samoa, USA (13). *Fair - uncirculated*. (approx 180)  
\$70
- 1755  
**Queen Victoria - Elizabeth II**, various base metal crowns, mostly nickel brass threepences in envelopes, cupro nickel crowns (10), two pound coins (6), five pence, 2002, also Sydney 2000 proof five dollars (cased) also bank notes, one pound (5), ten shillings (2), and foreign coins with notes (poor). *Poor - FDC*. (approx 200)  
\$100
- 1756  
**Queen Victoria - Elizabeth II**, 1860s-1967, mixed quantities of assorted dates of pennies (5.5kg) and halfpennies (0.96kg). *Poor - extremely fine*. (6.46kg)  
\$100
- 1757  
**George III**, proof retro pattern crowns in aluminium, includes Ireland 1808, Scotland 1808, William III, England 1835, 1836, Ireland 1830, New South Wales 1830 (2), also Scotland 1830 in cupro nickel and in bronze. *FDC*. (9)  
\$140
- 1758  
**Scotland**, William III, proof retro pattern crowns, 1830, four in bronze and four in aluminium. *FDC*. (8)  
\$120